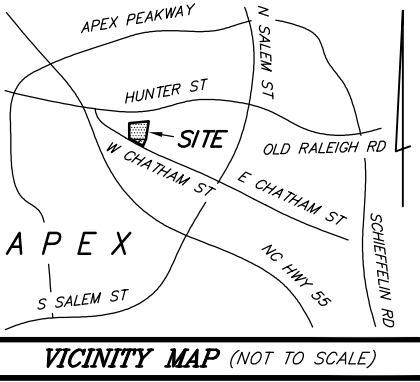


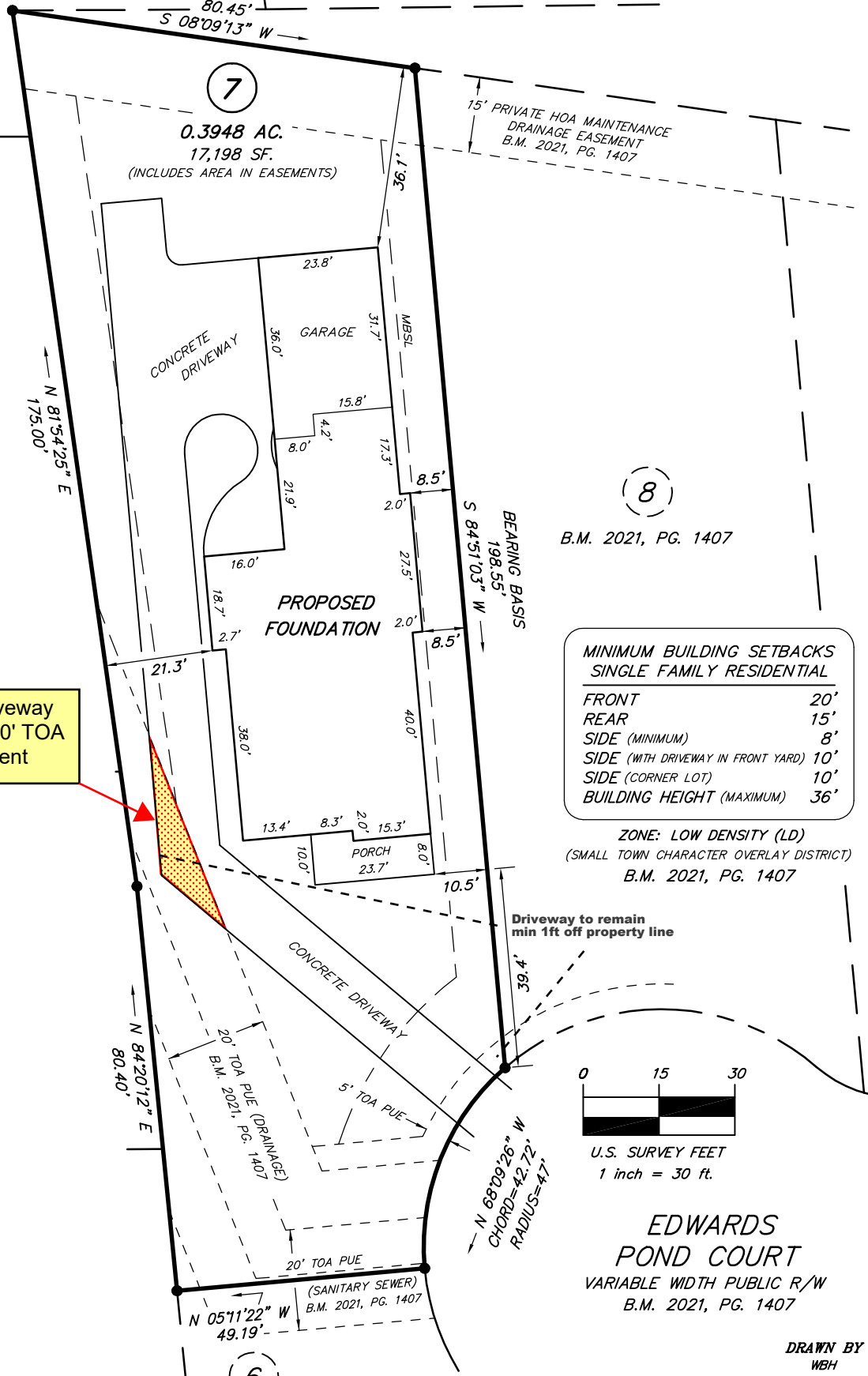
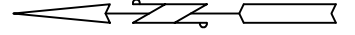
EXHIBIT A

1301 EDWARDS POND COURT

NOTE:
THIS MAP MAY NOT BE A CERTIFIED SURVEY AND HAS NOT BEEN REVIEWED BY A LOCAL GOVERNMENT AGENCY FOR COMPLIANCE WITH ANY APPLICABLE LAND DEVELOPMENT REGULATIONS AND HAS NOT BEEN REVIEWED FOR COMPLIANCE WITH RECORDING REQUIREMENTS FOR PLATS.



MAP NORTH
B.M. 2021, PG. 1407



DRAWN BY
WBH

**PLOT PLAN FOR
COTTON CUSTOM HOMES, INC.**
TOWN OF APEX, WHITE OAK TOWNSHIP, WAKE COUNTY, N.C.

**Smith & Smith,
Surveyors, P.A.**

DATE AUGUST 11, 2021
SCALE 1" = 30'
PIN A PORTION OF 0742-22-1144
PROJ. No. 2021-64

P.O. BOX 457
APEX, N.C. 27502
(919) 362-7111

FIRM LICENSE No. C-0155