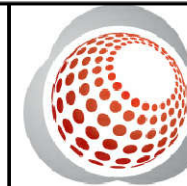


CURVE TABLE				
CURVE	RADIUS	LENGTH	CHORD DIRECTION	CHORD
C12	25.00'	41.96'	S47°28'26"E	37.21'
C62	37.00'	54.14'	N42°31'34"E	49.44'

EXHIBIT A



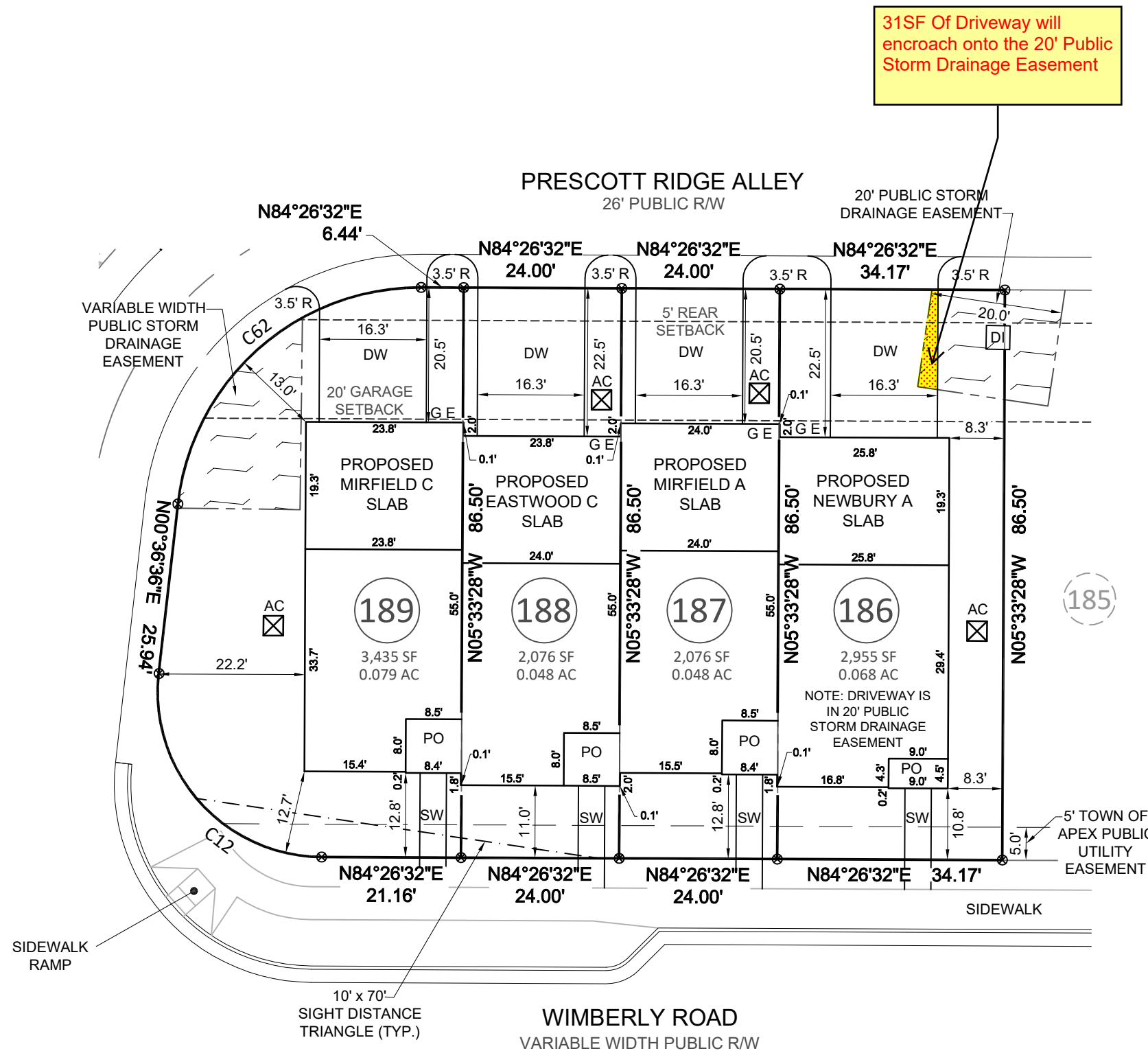
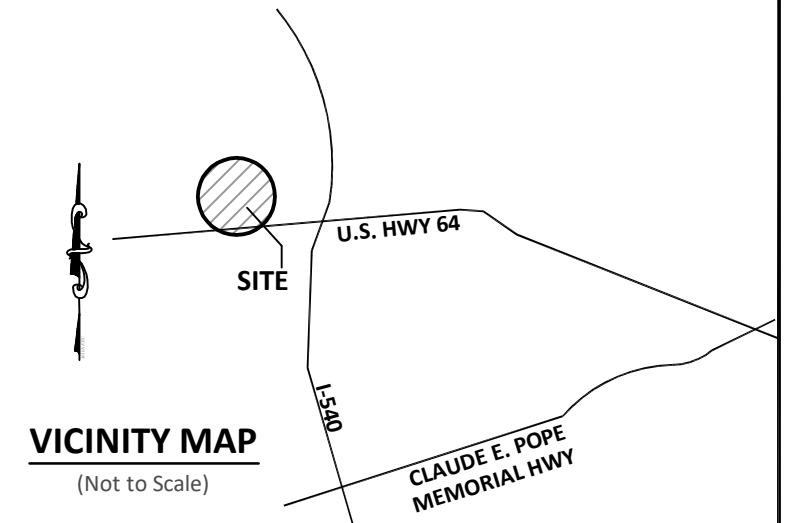
Bateman Civil Survey Company

Engineers • Surveyors • Planners

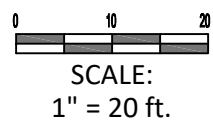
2524 Reliance Avenue, Apex, NC 27539 Ph: 919.577.1080 Fax: 919.577.1081

www.batemancivilsurvey.com info@batemancivilsurvey.com

NCBELS Firm No. C-2378



NOTE:
THIS MAY NOT BE A CERTIFIED SURVEY AND HAS NOT BEEN REVIEWED BY A LOCAL GOVERNMENT AGENCY FOR COMPLIANCE WITH ANY APPLICABLE LAND DEVELOPMENT REGULATIONS AND HAS NOT BEEN REVIEWED FOR COMPLIANCE WITH RECORDING REQUIREMENTS FOR PLATS.



TOWNES AT WESTFORD PH. 3B - LOTS 190-193
WIMBERLY ROAD, APEX, NC
WHITE OAK TOWNSHIP, WAKE COUNTY

DATE: 10/27/21 DRAWN BY: ALT CHECKED BY: SPC

REFERENCE: BM 2021, PG. 1565-1569 BCS# 190363 SCALE: 1" = 20'

P:\2019 Projects\190363 Townes at Westford\dwg\190363 WESTFORD PH 3 B.dwg, 10/28/2022 4:21:18 PM, Font Reader PDF Printer