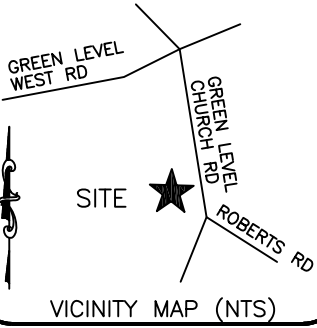


Exhibit A



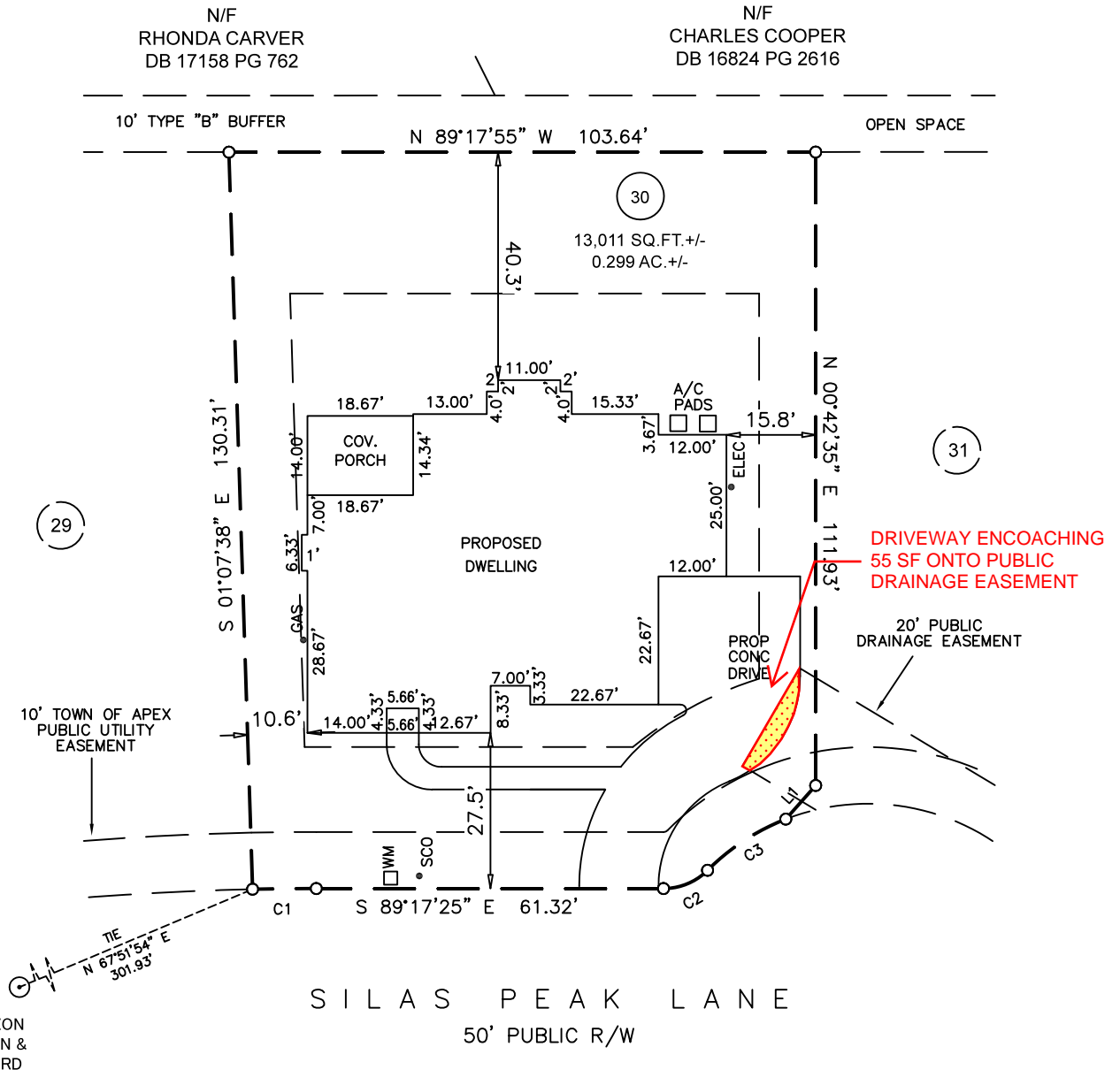
- LEGEND**
- AC=AIR CONDITIONING UNIT
 - BOC=BACK OF CURB
 - DW=CONC DRIVEWAY
 - EB=ELECTRIC BOX
 - EOP=EDGE OF PAVEMENT
 - P=PATIO
 - PO=PORCH
 - SCO=CLEANOUT
 - SW=SIDEWALK
 - TP=TELEPHONE PEDESTAL
 - WM=WATER METER
 - IRON PIPE FOUND
 - IRON PIPE SET
 - NAIL SET

NOTE:
 THIS MAY NOT BE A CERTIFIED SURVEY AND HAS NOT BEEN REVIEWED BY A LOCAL GOVERNMENT AGENCY FOR COMPLIANCE WITH ANY APPLICABLE LAND DEVELOPMENT REGULATIONS AND HAS NOT BEEN REVIEWED FOR COMPLIANCE WITH RECORDING REQUIREMENTS FOR PLATS.

PER PLAT
SETBACKS

FRONT	25'
SIDE MIN.	8'
SIDE TOTAL	20'
REAR	25'
CORNER	18'

PLAT NORTH
 BM 2022 FCS 1763-1767



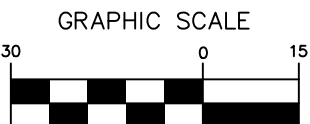
REVISION: SHOW PROPOSED UTILITIES 12/5/22

L1 N 42°20'36" E 7.95'

C1 R=525.00' A=11.26° S 89°54'16" E 11.26'
 C2 R=11.00' A=8.66° S 68°09'37" W 8.44'
 C3 R=40.00' A=16.63° N 57°31'13" E 16.51'

IMPERVIOUS AREA

HOUSE	3,704 SQ.FT.
DRIVE/WALK	1,344 SQ.FT.
PATIO	0 SQ.FT.
TOTAL	5,048 SQ.FT.



1 inch = 30 ft.

PLOT PLAN

ECLS	PROJECT:	ELLSWORTH
	DRAWN BY:	NMF
	SURVEYED BY:	N/A
	SCALE:	1"=30'
	FIELD WORK:	DWG DATE:

FOR
UPRIGHT BUILDERS, INC.
 2553 SILAS PEAK LANE
 LOT 30
 ELLSWORTH SUBDIVISION
 WHITE OAK TWP., WAKE CO., NC
 BM 2022 PG 1763-1767

ECLS
 GLOBAL, INC.
 U.S. VETERAN-OWNED
 19 N MCKINLEY ST
 COATS, NC 27521
 910.897.3257 ECLSGLOBALINC.COM
 910.897.2329 (FAX) CO#C-4175