



**Elevating the performing
arts in Apex**



Who are We?

The Carolina Academy of Performing Arts is a premier educational organization that provides conservatory-level instruction in theatre, music, dance, and film to youth ages 5 to 18.

Our Purpose

CAPA seeks to build character and create a vibrant community for the youth of Apex and surrounding areas through exceptional performance arts education.

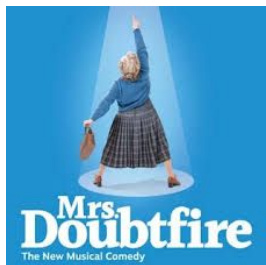
CAPA provides high-quality entertainment for families and strives to become a premier **venue** for local and regional artists to showcase their talents and inspire others.



Our History

CAPA began in 2017 with two classes and a summer production of 40 students at the Apex Halle Cultural Center. Since that time we have grown to offering 30 classes with over 200 students. Many of which come from Apex and the surrounding areas.





Oklahoma City
UNIVERSITY





Why We're Here

CAPA would like to partner with the community to elevate the performing arts in Apex and help drive growth.

Our key need is adequate rehearsal and performance space. CAPA needs a place to call HOME.

Why does Space matter?

- Dedicated facilities for instruction
- Ability to expand our programs
- **Ability to accommodate all interested students**
- Proper rehearsal and performance spaces
- Storage for costumes, props, and equipment
- Performance space that can support proper sets, cast sizes, and audience sizes
- *Other arts programs are closing because of space challenges!*

**We want to do more and give more
to the communities we serve!**

Current Performance Spaces are Inadequate

Where CAPA has searched:

- Churches
- Halle
- Fuquay-Varina Arts Center
- Holly Springs Cultural Center
- Cary Arts Center
- Fletcher
- Wake County Schools
- Universities

Space Challenges:

- Seating Capacity
- Wing Space
- Stage Size
- Technical Capacity
- Expense
- Distance
- Bureaucracy
- Availability

Long-term plans

Fundraising goal: \$40M for a permanent theatre

Timeline: 2 years to build

Plans for self-sustainability:

- Ticket sales from performances
- Workshop fees
- Summer programs
- Facility rentals
- Patrons
- Resident Programs
- Volunteers



Partnerships

John Storyk, co-founder of WSDG, an architectural and sound design firm, has partnered with CAPA to design and build our dream space.



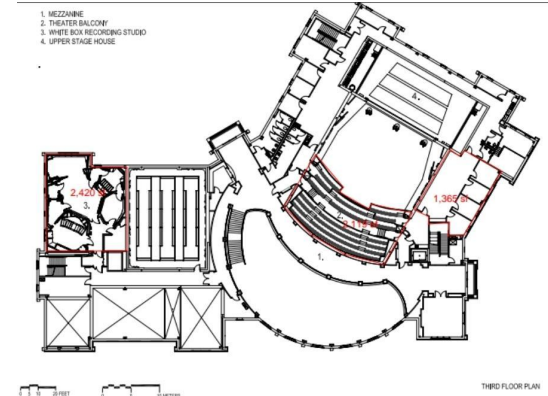
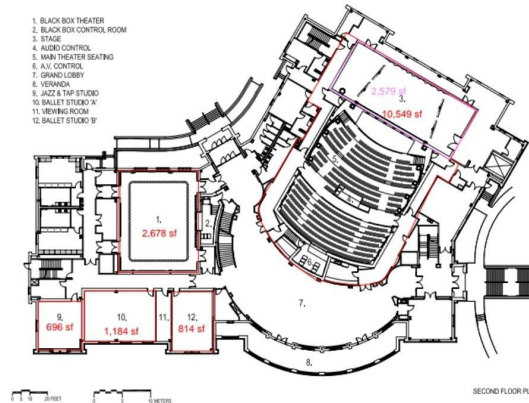
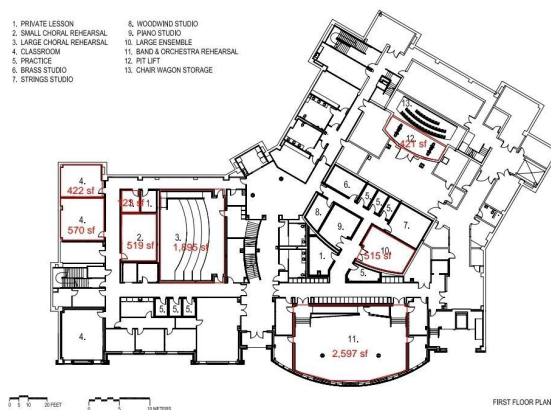
CAPA Theatre Plans

New 50,000 ft² facility will house:

- Main proscenium stage with seating capacity for 600-1000 seats
- A secondary flexible box theater with 150-200 seats
- Rehearsal spaces dedicated to dance, music, and theatre
- Educational spaces, including classrooms, library resource center, and acting studios
- Support film/audio recording
- Storage and administration spaces



<https://www.mtparanschool.com/arts/murray-arts-center>



Benefits of CAPA to Apex

**A Welcoming
Community
High Performing
Government
Economic Vitality**

Increased youth engagement in positive after-school activities

Cultural enrichment through performances and events

Potential economic impact: • Audience attraction for performances • Increased foot traffic for local businesses

Improved city image as a supporter of arts and youth

A Community Partnership

- Assistance with identification of suitable temporary facilities and long term location
 - Potential city-owned properties
 - Available land
- Introductions to key stakeholders or potential donors
- Support with grant applications for arts funding
- Waive town taxes
- Tax credits for investors and businesses
- Partnerships with county/other townships

Apex: The PEAK of Performing Arts!

Thank you



Tracy Weeks
President

Tracy@mycapa.org



Reed Jacob
Vice-President

Reed@mycapa.org



Melanie Prince,
Founder/Artistic Director

Melanie@mycapa.org