

NOTES:

1. RECTANGULAR RAPID FLASH BEACON (RRFB) SHALL BE INSTALLED IN PAIRS, ONE ON EITHER SIDE OF APPROACH TRAFFIC AND DOUBLE-SIDED.
2. CONTROLLER SHALL BE INSTALLED ON THE BACKSIDE OF THE POST FROM APPROACH TRAFFIC. INSTALL CONTROLLER UNDER THE ARROW PLAQUE SIGNAGE AND ABOVE THE PUSH BUTTON SIGNAGE.
3. THE W11-2, W11-15, OR S1-1 SIGNS SHALL BE 36" X 36".
4. FOR A 14' POLE, INSTALL RRFB ON A TYPE III CONCRETE FOUNDATION AND ANCHOR BOLTS PER NCDOT SPECIFICATIONS, UNLESS SPECIFIED OTHERWISE BY THE VENDOR.
5. INSTALL BEACON SO THAT PUSH BUTTON IS OFFSET NO MORE THAN 1 FOOT FROM EDGE OF PATH FOR ACCESSIBILITY.

TOWN OF APEX  
STANDARDS

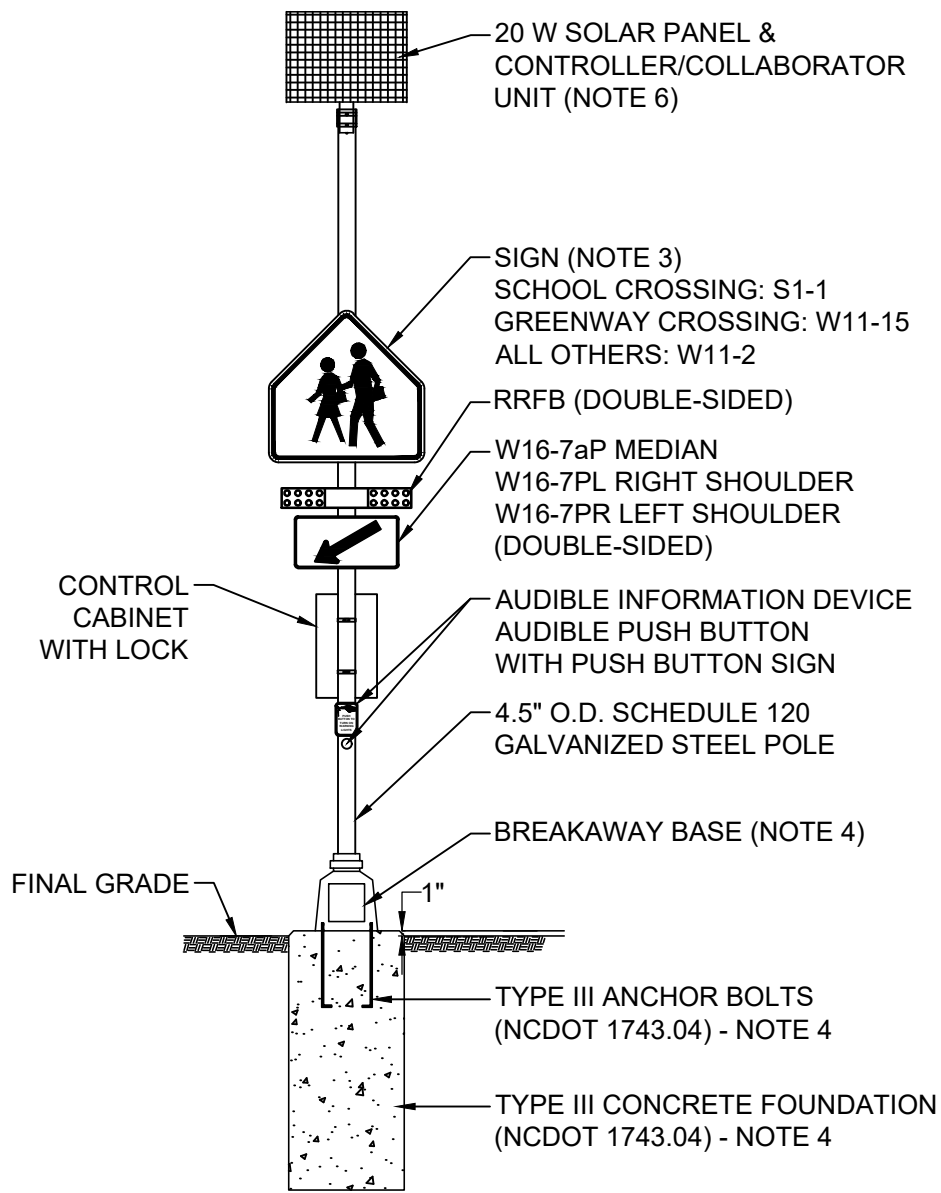
RECTANGULAR RAPID FLASH BEACON  
(METER)

STD. NO.

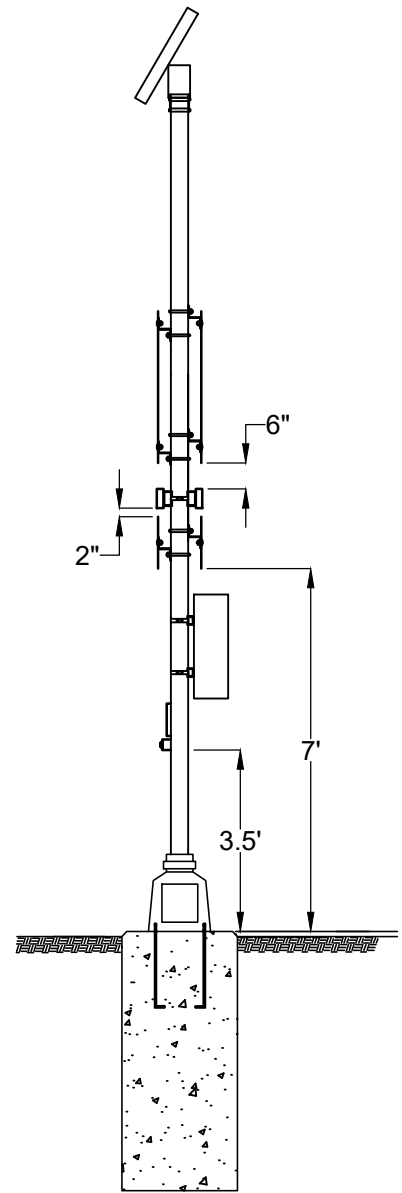
300.35

EFFECTIVE: JANUARY 28, 2025

SHEET 1 OF 2



FRONT VIEW



SIDE VIEW

NOTES:

1. RECTANGULAR RAPID FLASH BEACON (RRFB) SHALL BE INSTALLED IN PAIRS, ONE ON EITHER SIDE OF APPROACH TRAFFIC AND DOUBLE-SIDED.
2. CONTROLLER SHALL BE INSTALLED ON THE BACKSIDE OF THE POST FROM APPROACH TRAFFIC. INSTALL CONTROLLER UNDER THE ARROW PLAQUE SIGNAGE AND ABOVE THE PUSH BUTTON SIGNAGE.
3. THE W11-2, W11-15, OR S1-1 SIGNS SHALL BE 36" X 36".
4. FOR A 14' POLE, INSTALL RRFB ON A TYPE III CONCRETE FOUNDATION AND ANCHOR BOLTS PER NCDOT SPECIFICATIONS, UNLESS SPECIFIED OTHERWISE BY THE VENDOR.
5. INSTALL BEACON SO THAT PUSH BUTTON IS OFFSET NO MORE THAN 1 FOOT FROM EDGE OF PATH FOR ACCESSIBILITY.
6. SOLAR PANEL SHALL BE AFFIXED TO TOP OF POST ORIENTED TO FACE SOUTH AND SUPPORT AID PUSH BUTTON POWER DEMAND BASED ON LOCATION SPECIFIC MANUFACTURER DETAILS. PANEL MAY HAVE INTEGRATED BATTERY AND CONTROLS IN LIEU OF CONTROL CABINET.