



Apex Public Art

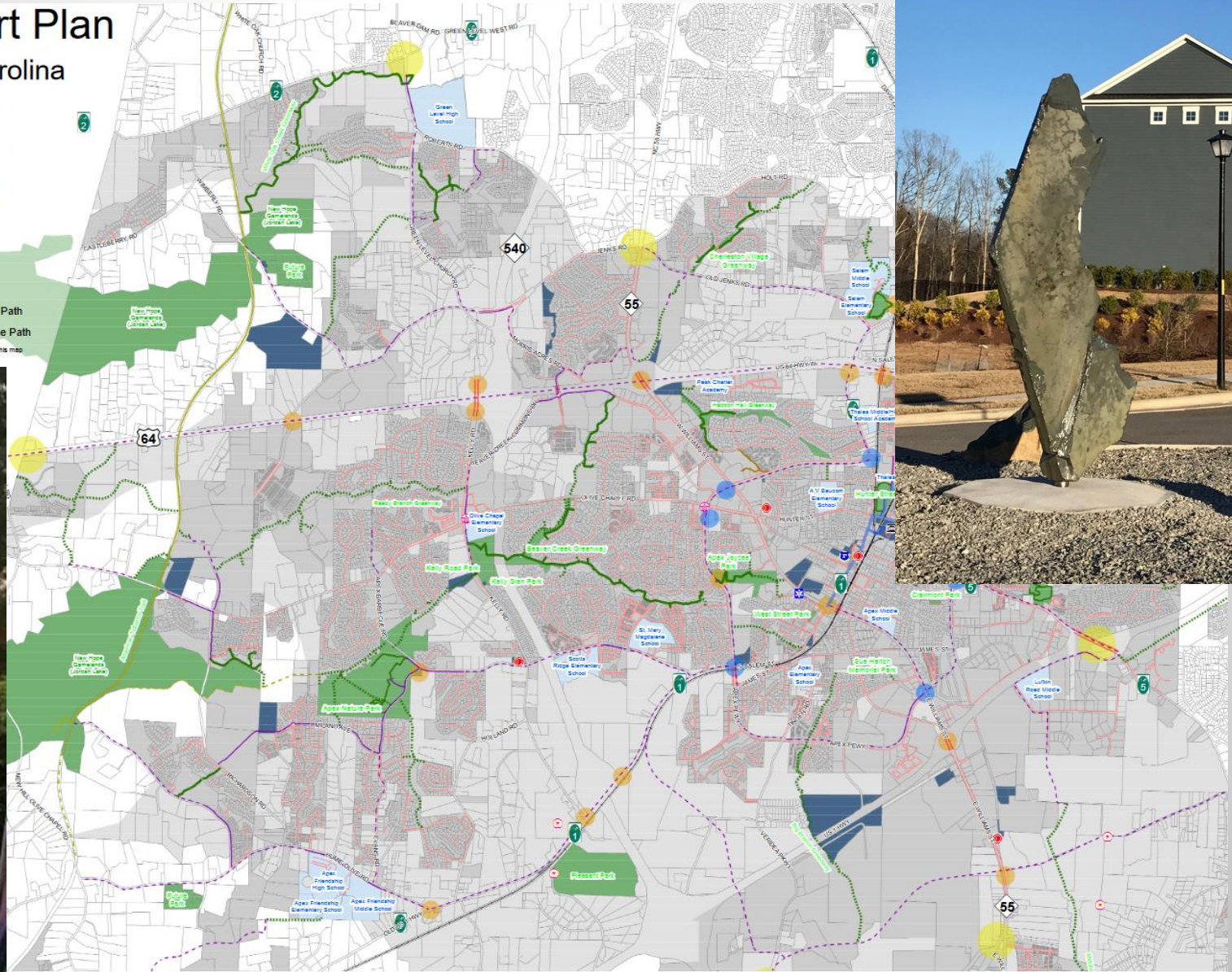
# Apex Public Art annual holiday window painting with area high schools



# Public Art is Integrated with Town Planning

## Proposed Public Art Plan Town of Apex, North Carolina

- Public Art Target Areas\***
- Major Gateway
  - Major Intersection
  - Peakway Intersection
  - Approved Locations
  - Proposed Locations
  - Public Art Walk
  - Bridge Locations
  - Railroad
  - Town-Owned Property
- Parks & Rec Trails**
- Existing Greenway
  - Existing Greenway (Private)
  - Proposed Greenway
  - Existing Multi-Use Path
  - Proposed Multi-Use Path
  - Existing Equestrian Multi-Use Path
  - Proposed Equestrian Multi-Use Path
- Other Trails/Paths**
- Corporate Limits
  - Extrateritorial Jurisdiction
  - Existing Sidewalk



Area businesses,  
schools and the  
community  
getting involved



# Apex Public Art partnership with the United Arts Council

View driving north on Rt 55



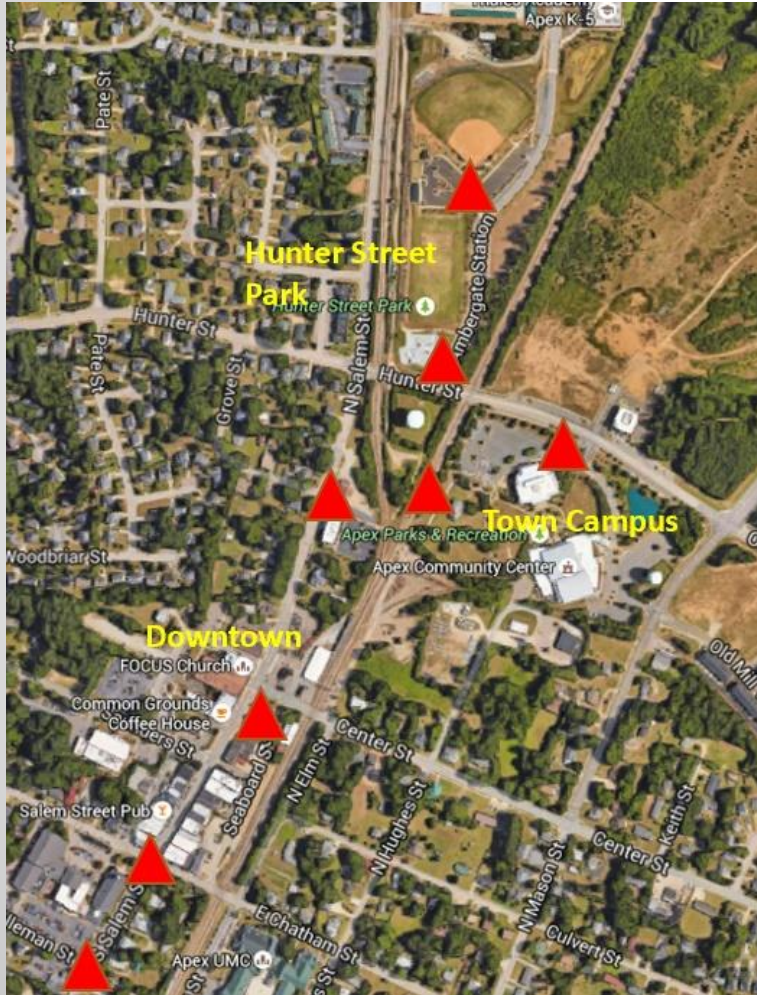
Apex Public Works Building – Route 55



View driving south on Rt 55

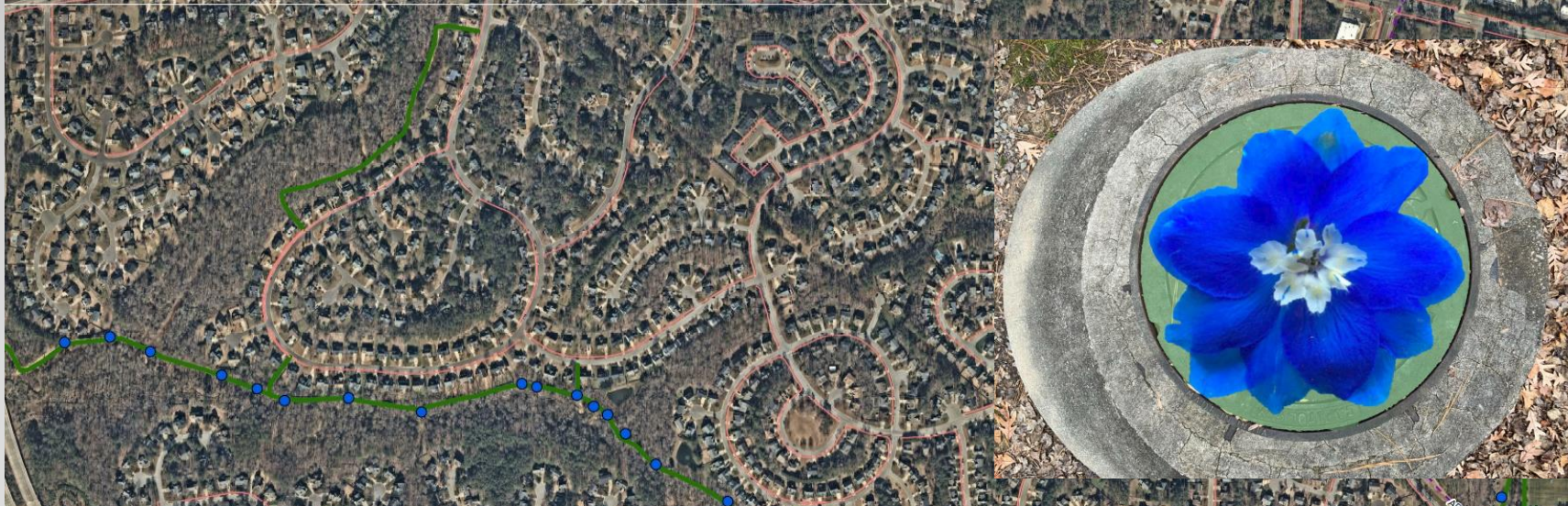


# Apex Public Art Sculpture Show and Art Walk



- 6-8 locations for outdoor sculptures connecting Apex Town Campus, Hunter Street Park and Downtown Apex
- Sculptures on loan from regional artists for a period of 6 to 12 months.
- Awards given to Best in Show and People's Choice at a public event celebrating the artwork & the artists while expressing gratitude for the sponsors.
- Placards, Art Walk map and digital content describing the artwork, identifying the artists and acknowledging the sponsors.

# Artwork along Beaver Creek Greenway



A top-down view of several open paint cans of various colors (blue, yellow, pink, red, green) arranged on a wooden surface. The text "Thank You" is written in white, cursive font across the center of the image.

Thank You