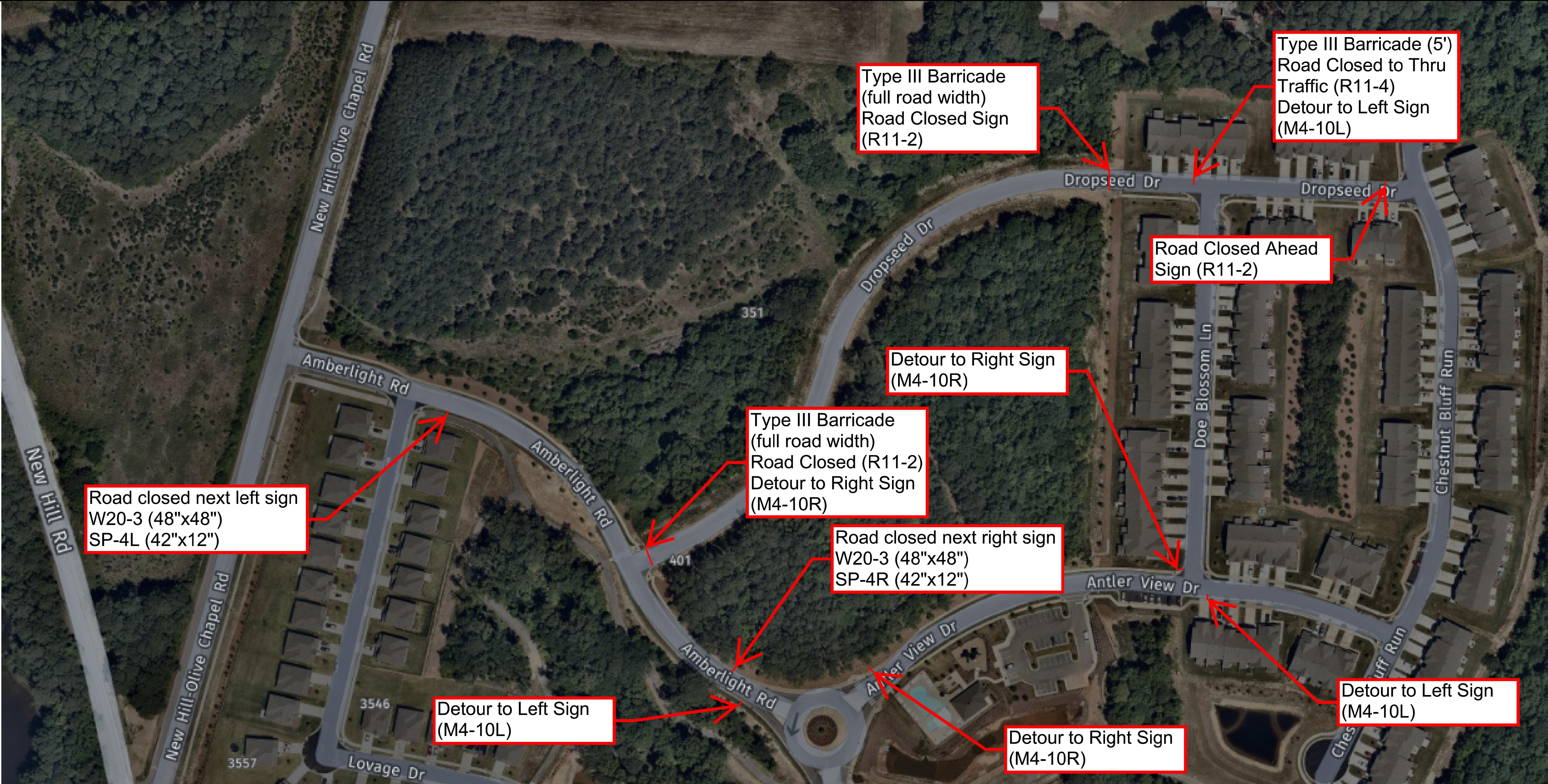


Plotted By: Judd, Katie Sheet Set: TMSA Layout: C11.1 ROAD CLOSURE PLAN December 06, 2021 12:54:34pm \\kimley-horn.com\SE_RALI\RAL-LOEVA\013804000_TMSA\Planning Phase\15-CAD Files\PlanSheets\C11.1 ROAD CLOSURE PLAN.dwg
This document, together with the concepts and designs presented herein, is an instrument of service, and its use is intended only for the specific purpose and client for which it was prepared. Reuse or improper reliance on this document without written authorization and adaptation by Kimley-Horn and Associates, Inc. shall be without liability to Kimley-Horn and Associates, Inc.



LEGEND

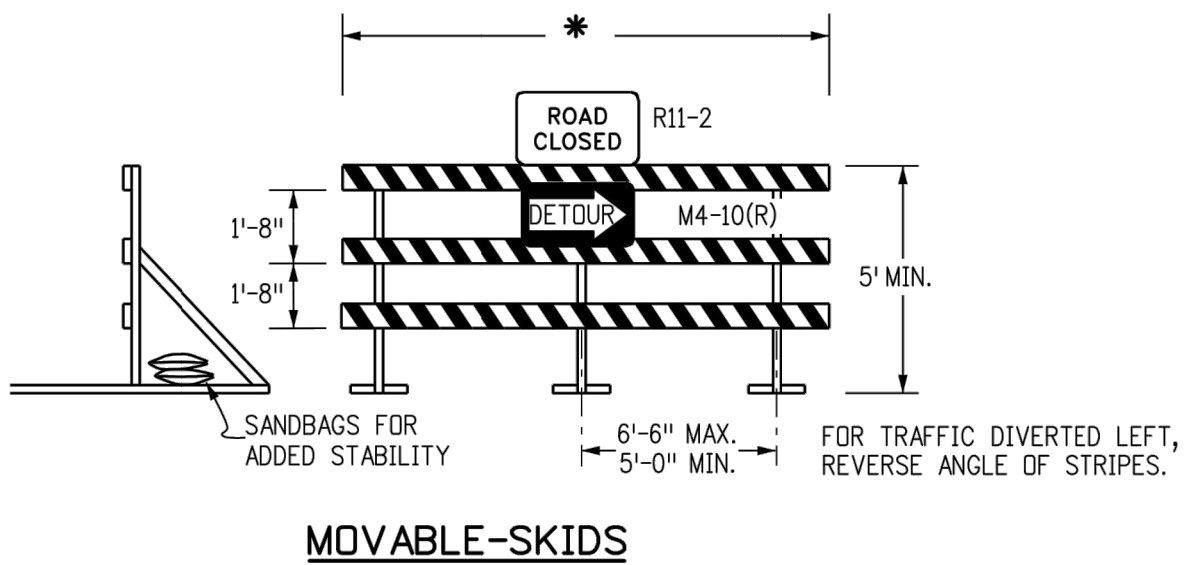


* RAIL LENGTH TABLE

| TYPE 3 BARRICADE | | LENGTH |
|------------------|---------|-----------|
| FIXED | MOVABLE | |
| F - A | M - A | 8' - 14' |
| F - B | M - B | 15' - 24' |
| F - C | M - C | 25' - 35' |
| F - D | M - D | > 35' |

NOTES

1. TYPE 3 BARRICADES HAVE 3 REFLECTORIZED RAIL FACES IF FACING TRAFFIC IN ONE DIRECTION AND 6 IF FACING TRAFFIC IN TWO DIRECTIONS.
2. THE PORTION OF THE POST ABOVE THE GROUND LINE SHALL BE PAINTED IN ACCORDANCE WITH THE APPROPRIATE GENERAL NOTE.
3. DETACHABLE EXTENSION WING RAILS FOR BYPASSING OF CONSTRUCTION EQUIPMENT ARE PERMITTED, WHEN NECESSARY, ON FIXED OR MOVABLE TYPE 3 BARRICADES. THE LENGTH SHALL BE ADEQUATE TO CLOSE THE BORROW PIT AND/OR SHOULDER AS REQUIRED.



TYPICAL TYPE 3 BARRICADES

TYPICAL BARRICADE CHARACTERISTICS

| BARRICADE DESIGNATIONS | |
|------------------------|---|
| TYPE 3 | |
| RAIL WIDTH | 8" MIN.-12" MAX. |
| RAIL LENGTH | AS REQUIRED, SEE RAIL LENGTH TABLE |
| HEIGHT | 5' MIN. |
| USE | TEMPORARY OR PERMANENT |
| STRIPES | SEE DETAIL OF BARRICADE STRIPING AND APPROPRIATE GENERAL NOTES. |

| | | | |
|--|---------------------------|--|--|
| THE SIGNATURES AFFIXED BELOW CERTIFY THAT THIS SHEET HAS BEEN REVIEWED AND APPROVED SOLELY PER THE CERTIFICATIONS SIGNED ON THE COVER SHEET OF THESE CONSTRUCTION PLANS. | | | |
| PUBLIC WORKS - TRANSPORTATION | PLANNING | WATER RESOURCES - STORMWATER | |
| BUILDING INSPECTIONS | PLANNING - TRANSPORTATION | FIRE | |
| WATER RESOURCES - UTILITY ENGINEERING | | PARKS, RECREATION & CULTURAL RESOURCES | |
| ELECTRIC | | | |
| WATER RESOURCES - SOIL & EROSION CONTROL | | | |

Kimley»Horn

© 2021 KIMLEY-HORN AND ASSOCIATES, INC.
421 FAYETTEVILLE STREET, SUITE 600, RALEIGH, NC 27601
PHONE: 919-677-2000 FAX: 919-677-2050
WWW.KIMLEY-HORN.COM
#C-0102

TMSA
PREPARED FOR
**TRIANGLE MATH AND
SCIENCE ACADEMY**
NORTH CAROLINA
TOWN OF APEX

ROAD CLOSURE PLAN

C11.1

REVISIONS

| No. | REVISIONS | DATE | BY |
|-----|---------------|----------|-----|
| 3 | TOWN COMMENTS | 11/15/21 | KEJ |
| 2 | TOWN COMMENTS | 11/01/21 | KEJ |
| 1 | TOWN COMMENTS | 10/15/21 | KEJ |