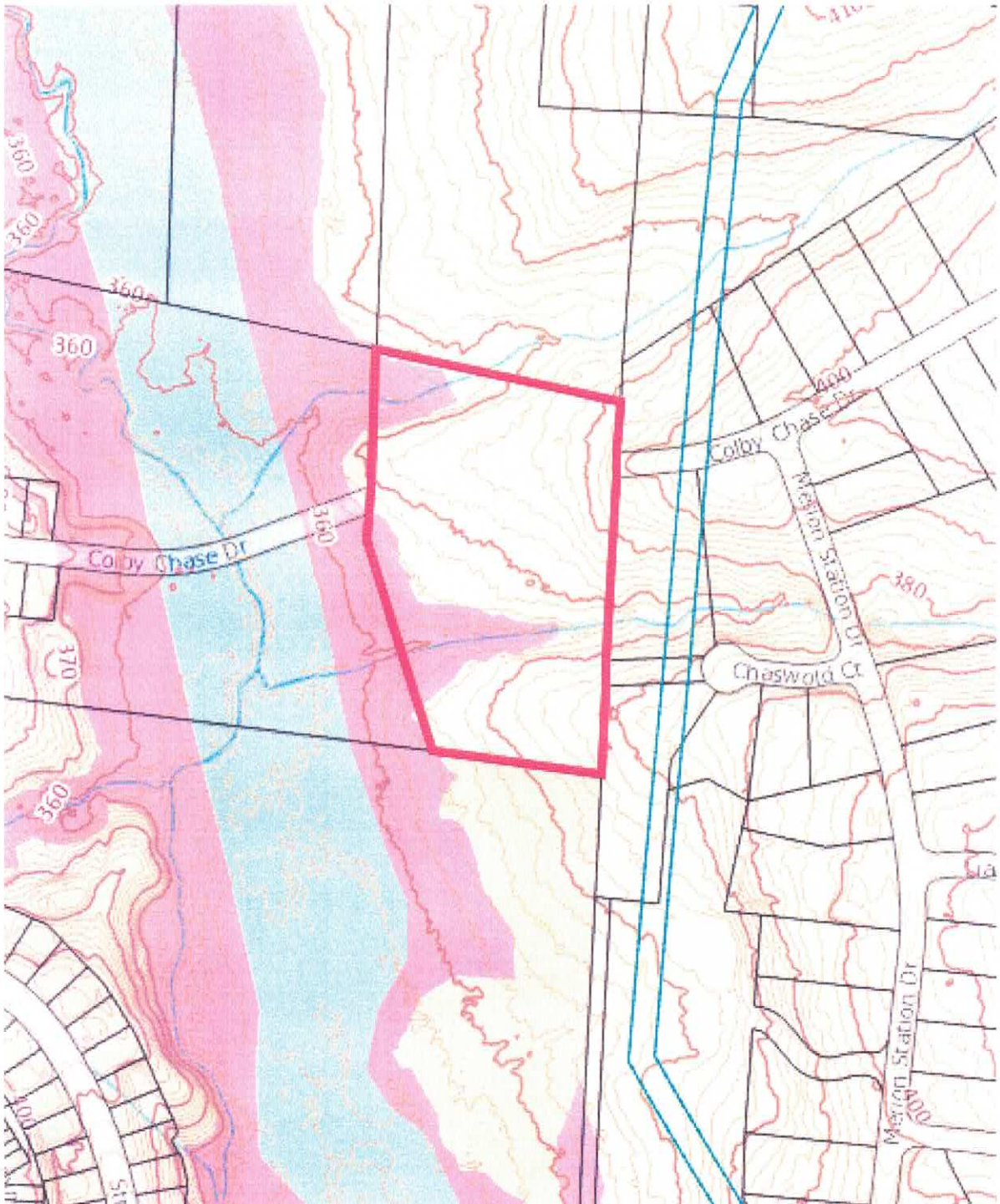


# Colby Chase Subdivision

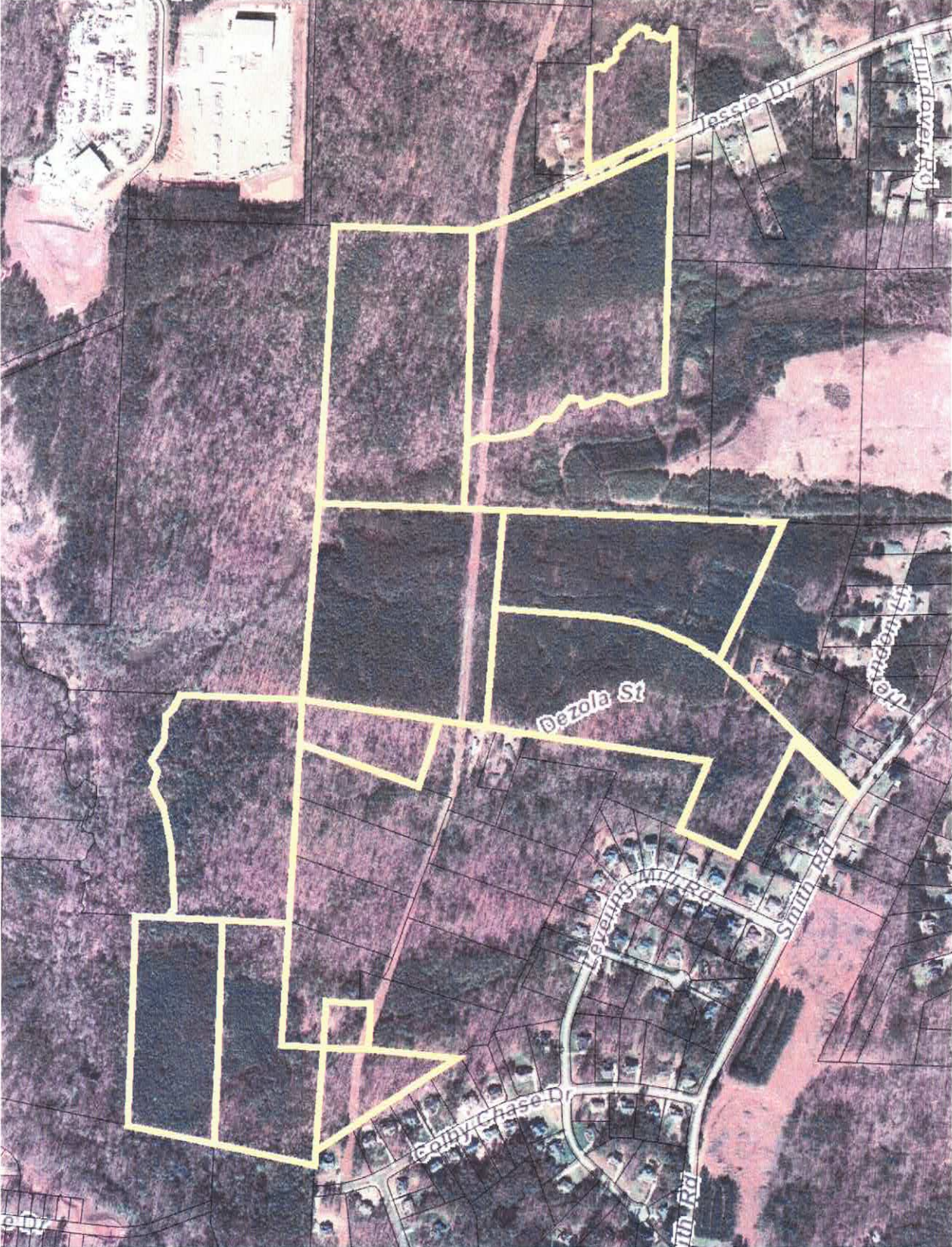
**BEING all of Tract D containing 7.578 acres as shown on a Recombination Survey for C.O. Heavner Heirs and Joseph Ira Lee, Et. Ux. Prepared by Smith and Smith Surveyors dated December 5, 2005 and recorded in Book of Maps 2006, Page 172, Wake County Registry.**

Wake County REID# 0332044; PIN 0750-26-4926





Horton Park PD





## Project Identification and Legal Description

### **Horton Park PUD**

Apex, White Oak Township  
Wake County, North Carolina  
Revised March 1, 2018

Horton Park property with the following Wake County Property Identification Numbers (PINs): 0751-42-1387, 0751-31-9308, 0751-31-0079, 0750-39-0993, 0750-49-2436, 0750-29-9342, 0750-29-2070, 0750-27-4707, 0750-27-8677, 0751-40-0194, 0750-27-0906, and 0750-27-8925  
Located in the Town of Apex's ETJ, between Jessie Drive and Colby Chase Drive, Apex, NC.

Commencing at an existing iron pipe at the northwest corner of N/F MFW Investments, LLC property (PIN# 0751-31-9308), said point intersects with southern line of N/F Trinity Apex North 100, LLC property (PIN# 0751-32-3228), and the northeast corner of N/F Fred Cash Jr. (PIN # 0751-31-0079), said point being the POINT OF BEGINNING;

thence N 01°34'29" E for 36.51' to an existing iron pipe at the northern Jessie Drive;

thence N 01°34'29" E for 30.22' to an existing iron pipe at the southern corner of N/F Trinity Apex North 100, LLC (PIN# 0751-42-1387);

thence N 01°34'29" W for 472.23' to a point along the N/F Blanche Hinton (PIN# 0751-32-8256) property line;

thence N 75°28'14" E for 47.89' to a point along the N/F Indus Real Associates LLC property (PIN# 0751-42-6828);

thence S 70°56'43" E for 19.41' to a point along the N/F Indus Real Associates LLC property (PIN# 0751-42-6828);

thence N 35°58'42" E for 29.34' to a point along the N/F Indus Real Associates LLC property (PIN# 0751-42-6828);

thence N 64°47'45" E for 28.00' to a point along the N/F Indus Real Associates LLC property (PIN# 0751-42-6828);

thence N 35°16'15" E for 29.31' to a point along the N/F Indus Real Associates LLC property (PIN# 0751-42-6828);

thence N 00°20'08" E for 28.40' to a point along the N/F Indus Real Associates LLC property (PIN# 0751-42-6828);

thence N 62°27'55" E for 32.05' to a point along the N/F Indus Real Associates LLC property (PIN# 0751-42-6828);

thence N 10°59'28" W for 21.69' to a point along the N/F Indus Real Associates LLC property (PIN# 0751-42-6828);

thence N 49°05'39" E for 103.19' to a point along the N/F Indus Real Associates LLC property (PIN# 0751-42-6828);

thence S 76°41'38" E for 45.82' to a point along the N/F Indus Real Associates LLC property (PIN# 0751-42-6828);

thence S 10°05'29" E for 28.71' to a point along the N/F Indus Real Associates LLC property (PIN# 0751-42-6828);

thence N 83°54'46" E for 28.00' to a point along the N/F Indus Real Associates LLC property (PIN# 0751-42-6828);

thence S 65°07'03" E for 45.42' to a point along the N/F Indus Real Associates LLC property (PIN# 0751-42-6828);

thence N 75°33'41" E for 27.20' to a point along the N/F Indus Real Associates LLC property (PIN# 0751-42-6828);

thence N 26°33'47" E for 42.52' to a point along the N/F Indus Real Associates LLC property (PIN# 0751-42-6828);

thence N 89°35'33" E for 13.97' to a point along the N/F Indus Real Associates LLC property (PIN# 0751-42-6828);

thence S 01°50'31" W for 476.05' to a point along the N/F Blanche Hinton property (PIN# 0751-42-4433) ending at a point on the Jessie Drive northern Right of Way line;

thence S 01°50'31" W for 66.76' to a point along the Jessie Drive southern Right of Way line;

thence S 01°50'31" W for 426.99' to a point along the N/F Blanche Hinton property (PIN# 0751-41-4924);

thence S 01°54'49" W for 118.52' to a point along the N/F KK Land Inc. property (PIN# 0751-41-0857);

thence S 01°49'17" W for 625.99' to a point along the N/F KK Land Inc. property (PIN# 0751-40-0697);

thence N 89°11'21" W for 2.52' to a point along the N/F KK Land Inc. property (PIN# 0751-40-0697);

thence S 72°37'10" W for 92.98' to a point along the N/F KK Land Inc. property (PIN# 0751-40-0697);

thence S 73°45'10" W for 80.25' to a point along the N/F KK Land Inc. property (PIN# 0751-40-0697);

thence N 60°10'47" W for 49.51' to a point along the N/F KK Land Inc. property (PIN# 0751-40-0697);

thence N 81°52'01" W for 67.16' to a point along the N/F KK Land Inc. property (PIN# 0751-40-0697);

thence S 40°49'23" W for 22.21' to a point along the N/F KK Land Inc. property (PIN# 0751-40-0697);

thence S 70°25'32" W for 99.01' to a point along the N/F KK Land Inc. property (PIN# 0751-40-0697);

thence N 24°18'53" W for 34.03' to a point along the N/F KK Land Inc. property (PIN# 0751-40-0697);

thence N 77°13'16" W for 50.45' to a point along the N/F KK Land Inc. property (PIN# 0751-40-0697);

thence S 37°21'11" W for 127.24' to a point along the N/F KK Land Inc. property (PIN# 0751-40-0697);

thence S 84°47'45" W for 53.66' to a point along the N/F KK Land Inc. property (PIN# 0751-40-0697);

thence S 48°53'39" W for 94.23' to a point along the N/F KK Land Inc. property (PIN# 0751-40-0697);

thence S 79°54'53" W for 164.77' to a point along the N/F KK Land Inc. property (PIN# 0751-40-0697);

thence N 79°57'29" W for 36.14' to a point along the N/F KK Land Inc. property (PIN# 0751-40-0697);

thence S 87°46'00" W for 14.26' to a point along the N/F KK Land Inc. property (PIN# 0751-40-0697);

thence S 66°52'27" W for 76.36' to a point along the N/F KK Land Inc. property (PIN# 0751-40-0697) said point intersects with N/F Fred Cash Jr. property (PIN# 0751-31-0079);



thence S 07°14'12" E for 317.37' to a point along the N/F KK Land Inc. property (PIN# 0751-40-0697) said point intersects with N/F Mary Elizabeth Horton property (PIN# 0750-39-0993);

thence S 83°27'48" E for 187.41' to a point along the N/F KK Land Inc. property (PIN# 0751-40-0697) said point intersects with the northwest corner of the N/F MFWIRA, LLC property (PIN# 0751-40-0194);

thence S 83°27'48" E for 973.40' to a point in the southeast corner of the N/F KK Land Inc. property (PIN# 0751-40-0697) and the southwest corner of the N/F Sirrhan Griffin property (PIN# 0751-40-7981);

thence S 83°27'48" E for 337.45' to a point along the N/F Sirrhan Griffin property line (PIN# 0751-40-7981);

thence S 83°31'08" E for 16.61' to a point along the N/F Sirrhan Griffin property (PIN# 0751-40-7981 and the northwest corner of the N/F Dwight Wright property (PIN # 0750-49-8888);

thence S 28°37'14" W for 730.70' along the N/F Dwight Wright property (PIN# 0750-49-8888) to the southwest corner of said Wright property;

thence along a curve S 45°33'02" E with a radius 1,097.99' and chord length 144.18' to a point along the N/F Dwight Wright property (PIN# 0750-49-8888);

thence S 41°47'10" E for 763.27' to a point along the N/F Dwight Wright property (PIN# 0750-49-8888); said point being the centerline of Smith Road;

thence S 39°45'17" W for 30.00' to a point along the centerline of Smith Road;

thence N 41°47'45" W for 390.80 to a point along the N/F William Horton property (PIN# 0750-49-9041);

thence S 30°04'18" W for 604.83' to a point along the N/F William Horton property (PIN# 0750-49-9041) said point intersects with N/F Martha Burnet (PIN# 0750-48-5688);

thence N 62°26'59" W for 306.49 to a point along the N/F Martha Burnet property (PIN# 0750-48-5688), the N/F Richard Bacholzky property (PIN# 0750-48-4775) and N/F Kenneth Moushegian property (PIN# 0750-48-3860) said point intersects with N/F Joshua Beck property (PIN# 0750-49-2134);

thence N 26°52'23" E for 354.32' to a point along the N/F Joshua Beck property (PIN# 0750-49-2134);

thence N 77°31'26" W for 861.72' to a point along the N/F Joshua Beck property (PIN# 0750-49-2134) said point intersects with N/F Melissa Hinton property (PIN# 0750-39-5262);

thence N 77°28'29" W for 149.98' to a point along the N/F Melissa Hinton property (PIN# 0750-39-5262) said point intersects with N/F Mary Elizabeth Horton property (PIN# 0750-39-0993);

thence N 77°33'04" W for 275.75' to a point along the N/F Eugene Horton Heirs property (PIN# 0750-39-3222) said point intersects with N/F Merion Investment Properties LLC property (PIN# 0750-29-9342);

thence S 23°52'03" W for 340.31' to a point along the N/F Eugene Horton Heirs property (PIN# 0750-39-3222) said point intersects with N/F Matt Horton property (PIN# 0750-29-9045);

thence N 66°07'57" W for 585.43' to a point along the N/F Matt Horton property (PIN# 0750-29-9045) said point intersects with N/F MFW Investments LLC property (PIN# 0750-29-2070);

thence S 07°36'44" W for 246.69' to a point along the N/F Matt Horton property (PIN# 0750-29-9045) said point intersects with N/F Alton Richardson property (PIN# 0750-28-8880);

thence S 07°36'44" W for 274.24' to a point along the N/F Alton Richardson property (PIN# 0750-28-8880) said point intersects with N/F Donald Richardson property (PIN# 0750-28-8532);

thence S 07°36'44" W for 313.79' to a point along the N/F Donald Richardson property (PIN# 0750-28-8532) said point intersects with N/F Donald Richardson property (PIN# 0750-28-6271);

thence S 07°36'44" W for 9.43' to a point along the N/F Donald Richardson property (PIN# 0750-28-6271) said point intersects with N/F Loomis Horton Heirs property (PIN# 0750-27-4707);

thence S 07°00'15" W for 588.50' to a point along the N/F Donald Richardson property (PIN# 0750-28-6271);

thence S 85°42'32" E for 165.00' to a point on the southeast corner of the N/F Donald Richardson property (PIN# 0750-28-6271) said point intersects with N/F Merion Investments LLC property (PIN# 0750-27-8677);

thence S 85°42'32" E for 40.00' to a point along the N/F Merion Investments LLC property (PIN# 0750-27-8677) said point in the southwest corner of the N/F Virginia Stewart property (PIN# 0750-27-8925);

thence N 04°17'28" E for 210.00' to a point which in the northwest corner of the N/F Virginia Horton Stewart parcel (PIN# 0750-27-8677);

thence S 85°42'32" E for 164.54' along the N/F Virginia Horton Stewart parcel (PIN# 0750-27-8677);



thence S 85°42'32" E for 45.46' to a point which is the northeast corner of the N/F Virginia Horton Stewart parcel (PIN# 0750-27-8677);

thence S 04°17'28" W for 210.00' to a point which in the southeast corner of the N/F Virginia Horton Stewart parcel (PIN# 0750-27-8677) and an existing iron pin in the southwest corner of the N/R Robert Heise property (PIN# 0750-37-1996);

thence S 81°29'17" E for 436.45' to a point along the N/F Merion Investments LLC property (PIN# 0750-27-8677) said point intersects with N/F Robert Cathey property (PIN# 0750-37-3664);

thence S 60°32'28" W for 824.16' to a point along the N/F Merion Investments LLC property (PIN# 0750-27-8677) said point intersects with N/F Robert Cathey property (PIN# 0750-37-3664), N/F Richard Stewart property (PIN# 0750-37-2555), N/F Dennis Dale property (PIN# 0750-37-1540), N/F Todd Young property (PIN# 0750-37-0454), N/F John Falchi property (PIN# 0750-27-9358) and George King property (PIN# 0750-27-8301), said point intersects with N/F Loomis Horton Heirs property (PIN# 0750-27-4707);

thence S 02°56'47" W for 73.32' to a point along the N/F Loomis Horton Heirs property (PIN# 0750-27-4707) said point intersects with N/F MFW Investments LLC property (PIN# 0750-26-4926);

thence N 77°50'29" W for 487.73' to a point along the N/F MFW Investments LLC property (PIN# 0750-26-4926) said point intersects with N/F Patricia Jones property (PIN# 0750-27-0906) and N/F Pemberley Property Owners' Association, Inc. property (PIN# 0750-17-6279);

thence N 77°50'39" W for 8.51' along the southern boundary of N/F Patricia Jones (PIN# 0750-27-0906);

thence N 77°50'39" W for 424.69' to the southwest corner of the N/F Patricia Jones property (PIN# 0750-27-0906) along the N/F Pemberley Property Owners' Association, Inc. property (PIN# 0750-17-6279);

thence N 06°15'00" E 997.21' to a point in the northwest corner of the N/F Patricia Jones property (PIN# 0750-27-0906);

thence S 83°40'10" E for 162.45' to a point along the N/F Patricia Jones property (PIN# 0750-27-0906) said point intersects with N/F MFW Investments LLC property (PIN# 0750-19-7053 and 0750-29-2070);



thence N 45°39'39" E for 56.43' to a point along the N/F MFW Investments LLC property (PIN# 0750-19-7053);

thence N 01°01'01" E for 301.17' to a point along the N/F MFW Investments LLC property (PIN# 0750-19-7053);

thence N 07°47'37" W for 187.77' to a point along the N/F MFW Investments LLC property (PIN# 0750-19-7053);

thence N 24°12'03" W for 113.39' to a point along the N/F MFW Investments LLC property (PIN# 0750-19-7053);

thence N 24°46'59" E for 71.19' to a point along the N/F MFW Investments LLC property (PIN# 0750-19-7053);

thence N 26°33'54" W for 64.44' to a point along the N/F MFW Investments LLC property (PIN# 0750-19-7053);

thence N 37°00'06" E for 121.55' to a point along the N/F MFW Investments LLC property (PIN# 0750-19-7053);

thence N 07°08'18" E for 106.61' to a point along the N/F MFW Investments LLC property (PIN# 0750-19-7053);

thence N 52°04'00" E for 50.09' to a point along the N/F MFW Investments LLC property (PIN# 0750-19-7053);

thence N 26°44'55" E for 75.53' to a point along the N/F MFW Investments LLC property (PIN# 0750-19-7053), said point intersects with N/F Charles Womble property (PIN# 0750-29-0721);

thence S 83°33'51" E for 583.20' to a point along the N/F Charles Womble property (PIN# 0750-29-0721) said point intersects with the N/F Mary Elizabeth Horton property (PIN# 0750-39-0993) and the N/F Merion Investment Properties LLC property (PIN# 0750-29-9342);

thence N 08°41'45" E for 946.00' to a point along the N/F Charles Womble property (PIN# 0750-29-0721) said point intersects with N/F Fred Cash Jr. property (PIN# 0751-31-0079);

thence N 03°13'00" E for 1316.79' to a point along the N/F Charles Womble property (PIN# 0750-29-0721) said point intersects with N/F Trinity Apex North 100 LLC property (PIN# 0751-32-3228);

thence S 87°52'51" E for 659.44 to a point along the N/F Trinity Apex North 100 LLC property (PIN# 0751-32-3228), said point intersects with N/F MFW Investments LLC property (PIN# 0751-31-9308)

thence N 71°52'08" E for 205.23 to a point along N/F Trinity Apex North 100 LLC property (PIN# 0751-32-3228);

thence N 65°28'18" E for 379.18' to an existing iron pipe along the N/F Trinity Apex North 100, LLC (PIN# 0751-32-3228) property line, said point being the POINT OF BEGINNING.

Said property includes approximately 6,405,520 square feet or 146.899 acres.

List of Plats referenced to complete legal description.

- Recombination Survey Property of Trinity Apex North 100, LLC BM 2016 PG 1901
- Exempt Plat Property of Trinity Apex North 100, LLC Subdivision BM 2016 PG 1677
- Horton Heirs Properties BM 2015 PG 1973
- Map of Carcillar Horton "Estate Division" BM 1988 PG 754
- Division of E.L. Horton BM 1942 PG 114
- C.O. Heavner, Heirs and Joseph Ira Lee, Et Ux BM 2006 Pg 0172
- Exempt Division Survey Property of MFW Investments, LLC – BM 2017 Pg 1067
- Exempt Recombination Plat – Tract 2A and Tract 2B Horton Heirs Properties BM2017 Pg2004
- Estate Division – Carcillar Horton – BM1988 Pg754
- Patricia Jones property Deed – DB 2900 Pg 698