



19 Nov 2024

Emergency Management Program Overview

Taylor Sanchez




Emergency Management

Definition

The managerial function charged with creating the framework within which communities reduce vulnerability to hazards and cope with disasters.

Mission

To protect the Town of Apex by coordinating and integrating all activities necessary to build, sustain, and improve the capability to mitigate against, prepare for, respond to, and recover from threatened or actual natural disasters, acts of terrorism, or other man-made disasters.



Legislation


- Chapter 166A, North Carolina Emergency Management Act. 1977
- Robert T. Stafford Disaster Relief and Emergency Assistance Act, 1988
- Homeland Security Presidential Directive 5 (HSPD-5), 2003
- Post-Katrina Emergency Management Reform Act (PKEMRA), 2006
- Presidential Policy Directive 8 (PPD-8), 2011



Mission Areas

National Preparedness Goal

"A secure and resilient Nation with the capabilities required across the whole community to prevent, protect against, mitigate, respond to, and recover from the threats and hazards that pose the greatest risk."

- Measured by 32 core capabilities
 - Over 5 mission areas
 - Multidisciplinary / whole community involvement*
- 

Prevention		Protection	Mitigation	Response	Recovery
Planning					
Public Information and Warning					
Operational Coordination					
Intelligence and Information Sharing			Community Resilience Long-term Vulnerability Reduction Risk and Disaster Resilience Assessment Threats and Hazards Identification	Infrastructure Systems	
Interdiction and Disruption				Critical Transportation Environmental Response/Health and Safety Fatality Management Services Fire Management and Suppression Logistics and Supply Chain Management Mass Care Services Mass Search and Rescue Operations On-scene Security, Protection, and Law Enforcement Operational Communications Public Health, Healthcare, and Emergency Medical Services Situational Assessment	Economic Recovery Health and Social Services Housing Natural and Cultural Resources
Screening, Search, and Detection					
Forensics and Attribution	Access Control and Identity Verification				
	Cybersecurity				
	Physical Protective Measures				
	Risk Management for Protection Programs and Activities				
	Supply Chain Integrity and Security				

All Hazard

Natural



Technological



Man Made



Defining Scope

	Emergency	Disaster	Catastrophe
Individual	Physical Injury		
Organization / Departmental	Bomb threat	Building collapse	
Town	Cyber attack	Dixie Pipeline	
County		Localized Epidemic	Shearon Harris
Region			Hurricane Helene western NC

Types of Incidents

Incident Complexity Level: Incident Effect Indicators Summary										
Type	Resistance to stabilization or mitigation	How long does it take for resources to meet incident objectives?	Effects on population immediately surrounding the incident	Length of incident effects	Evacuations necessary during mitigation	Adverse impact on CIKR	CIKR impact / mitigation measures	Coordination required with elected/ governing officials and stakeholder groups	Do conditions or actions that caused original incident persist?	Probability of cascading event or exacerbation of current incident
5	None	1-2 hours	Minimal	Minimal	Few or none	None	None	Minimal or none	No	None
4	Low	Several to 24 hours	Limited	Up to 24 hours	Few or none	Minimal	Uncomplicated within one operational period	Minimal or none	No	Low to none
3	Moderate	At least 24 hours	Moderate	Several days to over one week	Possible; may require shelter	Threatens, damages, or destroys property	Adverse; multiple operational periods	Some	Possibly	Medium
2	High	Several days	Significant	Several days to two weeks	Possible; may require shelter/ housing for several days to months	Threatens, damages, or destroys property	Destructive; requires coordination over multiple operational periods	Moderate, including political organizations	Possibly	High
1	High	Numerous operational periods	Significant	Two weeks to over a month	May require shelter/ housing for several days to months	Significantly threatens, damages, or destroys property	Highly destructive; requires long-term planning and extensive coordination over multiple operational periods	High, including political organizations	Yes	High

Planning Tiers / Operating Structures



Figure 1.2: Relationship Between Strategic, Operational, and Tactical Planning

Blue Skies




Grey Skies





EM Blue Sky Responsibilities

- Develop and maintain Town wide emergency plans (EOP and Annexes)
 - Conduct training and exercise of emergency plans
 - Coordinate preparedness efforts with surrounding municipalities and Wake County
 - Ensure operational readiness of EOC
 - Develop EOC Staffing roles/responsibilities/procedures
 - Develop maintain emergency Memorandums of Understanding
 - Monitor potential Threats/Hazards (Weather/EM Network)
- 

EM Blue Sky Responsibilities

- Advise TOA on emergency policy and procedure development
- Review Incident Action Plans for Town Events
- Inventory / accountability of emergency reserve equipment/supplies
- Processing reimbursement of deployed resources
- Support outreach initiatives to develop community preparedness

EM Grey Sky Responsibilities

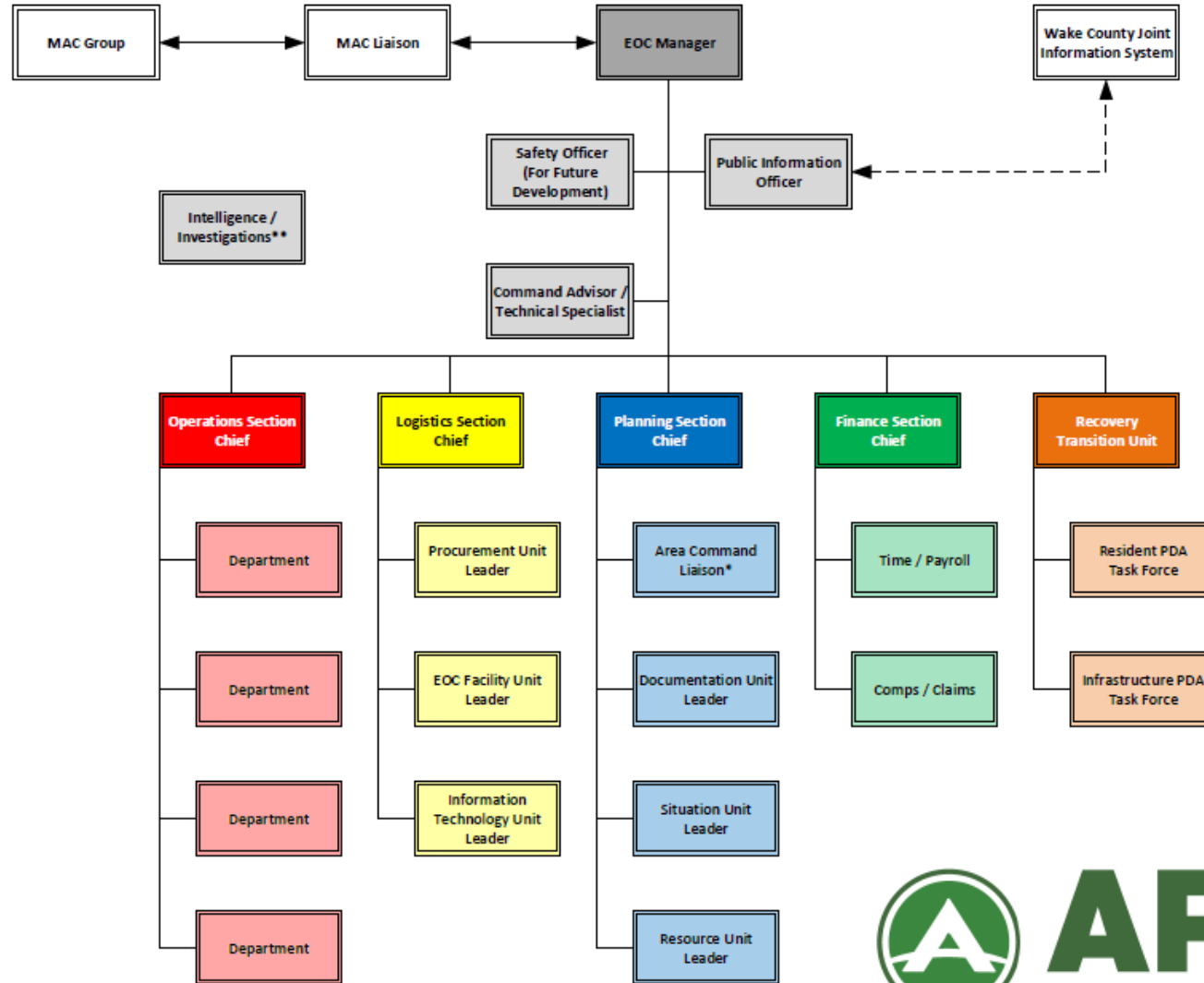
Response (Emergency Operations Plan)

- Incident Command System (ICS) *Advisor*
 - Operational Response Planning
 - EOP Coordination
- Emergency Operation Center (EOC) *Manager*
 - Ops Sync Coordination Calls
 - EOC Activation
 - COOP Manager
 - Battle Rhythm
- Multi Agency Coordination (MAC)/ Policy Group *Liaison*
 - Situational Briefings

EM Grey Sky Operational Structures

- Incident Command Structure (ICS)
 - Determine tactical objectives
 - Field Command and Control
 - Modular and Scalable
- Emergency Operations Center (EOC)
 - Coordination Center / resource, information and consequence management
 - Primary – PD HQ / Secondary – Public Safety Station #6
 - 1 monitoring level / 3 activation levels
 - Staffed by various departments
- Multi-Agency Coordination (MAC) / Policy Group
 - Establishing Goals / Priorities
 - Determine scarce resource allocations

Town of Apex Emergency Operations Center Organizational Chart



EOC Activation Levels

Level 4: Monitoring

- Future event is possible, unknown severity
- Limited to primary response departments

Level 3: Event Specific Activation

- Active event/immediate incident.
- Medium to Moderate severity.

Level 2: Limited Activation

- Major event/incident, immediate threat
- Potential of causing severe impacts to the community

Level 1: Full Activation / Area Command

- Major event/incident, immediate threat
- Potential of causing severe impacts to the community

Planning Framework Current State

TOA Emergency Operations Plan

❖ Functional Annexes

- Crisis Communications Plan (Dev.)
- Continuity of Operations/Government (COOP/COG) (Dev)

❖ Hazard Specific Annexes

- Hurricane (Ex)

❖ Supporting Plans

- TOA Emergency Action Plan
- EOC Staffing (Ex)
- Training and Exercise (Ex)

TOA Additional Plans

- Apex Lake Dam EAP
- Seagroves Pond Dam EAP

Partner Plans

- Harris Nuclear ERP, Wake Co.
- Area Command SOP, Wake Co.
- Staging Area SOP, Wake Co.

EOP Future Development

❖ Functional Annexes

- Damage Assessment
- Debris Management
- Logistics Staging Area
- Point of Distribution

❖ Functional Annexes

- EOC Staffing
- Training and Exercises

❖ Hazard Specific Annexes

- Target Hazard Sites
- Cyber Incident
- Hurricane
- Winter Weather
- Comfort Stations
- Active Shooter

Conclusion

- Comprehensive Program Management
- Plan Development and Sustainment
- Multi-Departmental / Organizational
- All-Hazards
- Whole Community

