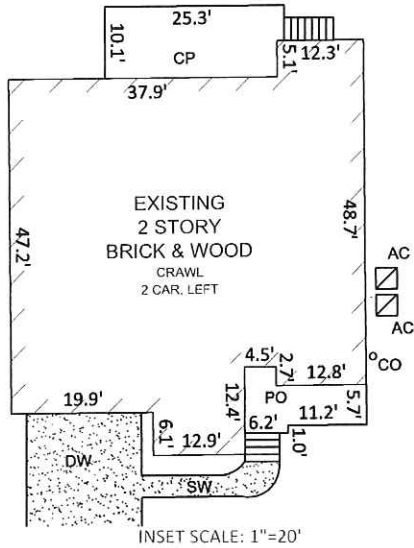


EXHIBIT A

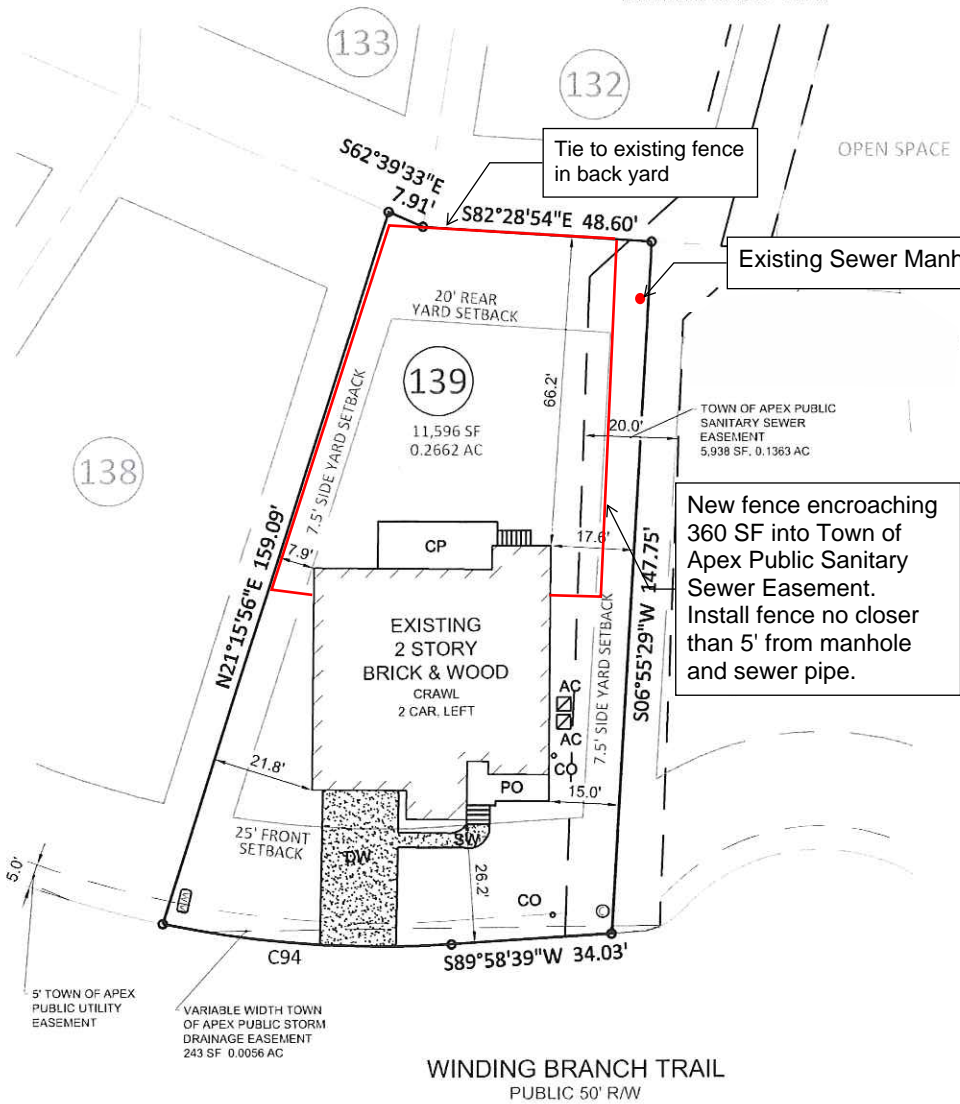
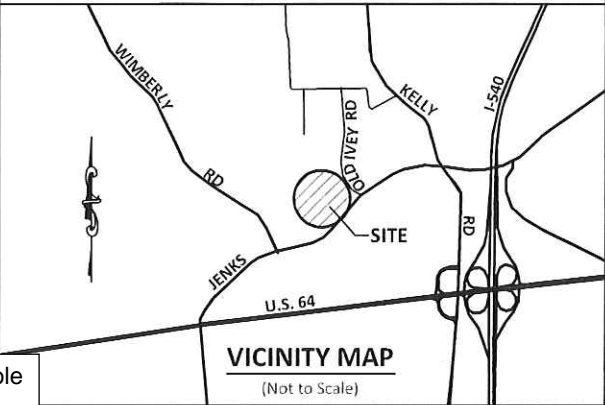


BUILDING SETBACKS:

FRONT = 25 ft
REAR = 20 ft
SIDE = 7.5 ft
CORNER = 15 ft

LOT INFORMATION:

PIN: 0722794318
REID: 0443622
HOUSE = 2,439 SF
DRIVEWAY = 535 SF
SIDEWALK = 87 SF
PORCH = 117 SF
COVERED PORCH = 251 SF
AC PAD = 18 SF
TOTAL LOT AREA = 0.2662 AC = 11,596 SF
TOTAL EXISTING IMPERVIOUS = 3,447 SF
PERCENT IMPERVIOUS = 29.7 %



NOTE:
THIS MAP MAY NOT BE A CERTIFIED SURVEY AND HAS NOT BEEN REVIEWED BY A LOCAL GOVERNMENT AGENCY FOR COMPLIANCE WITH ANY APPLICABLE LAND DEVELOPMENT REGULATIONS AND HAS NOT BEEN REVIEWED FOR COMPLIANCE WITH RECORDING REQUIREMENTS FOR PLATS.

PRESERVE @ WHITE OAK - LOT 139
2585 WINDING BRANCH TRAIL, APEX, NC
WHITE OAK TOWNSHIP, WAKE COUNTY

DATE: 7/12/17 DRAWN BY: JCH CHECKED BY: SPC

REFERENCE: PB 2017 PG.182-192 BCS# 160597 SCALE: 1" = 30'