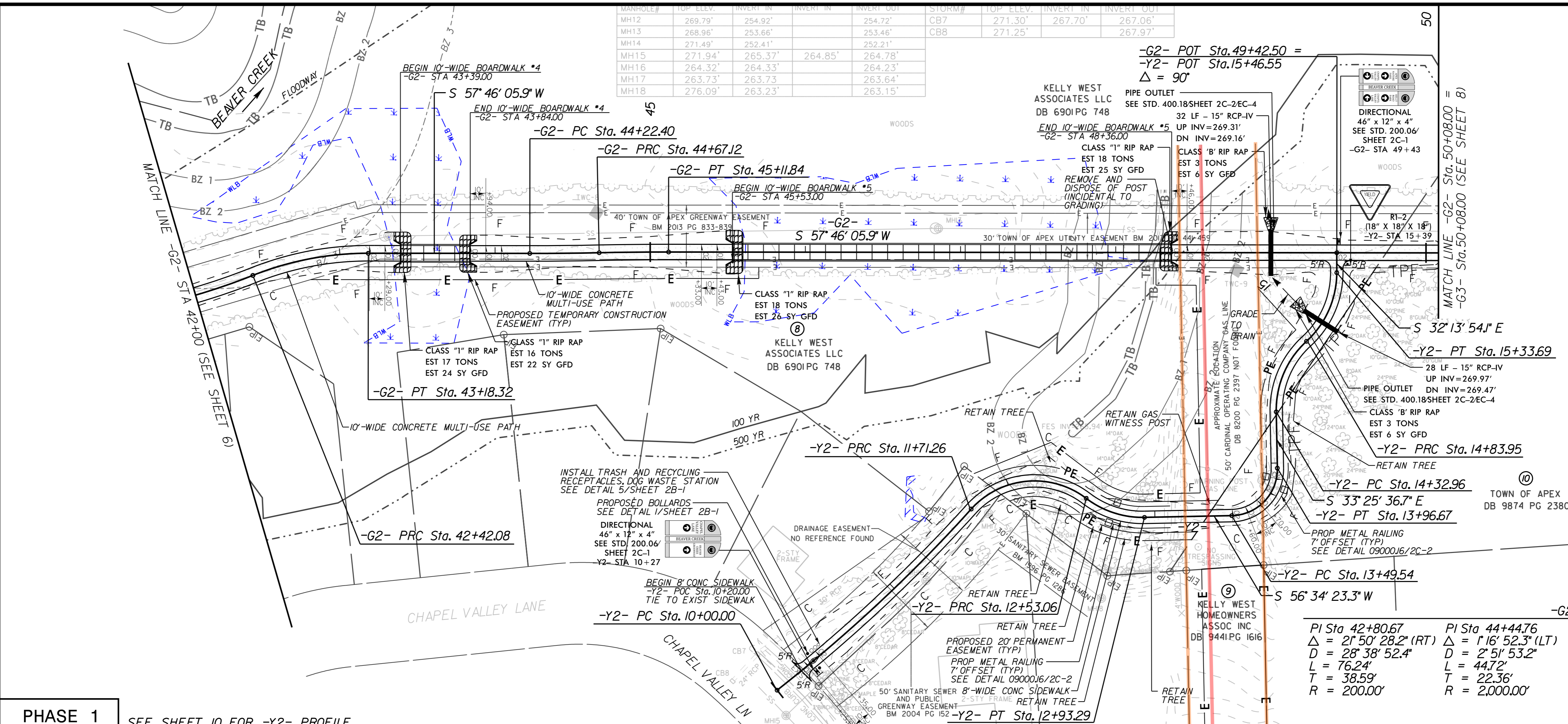
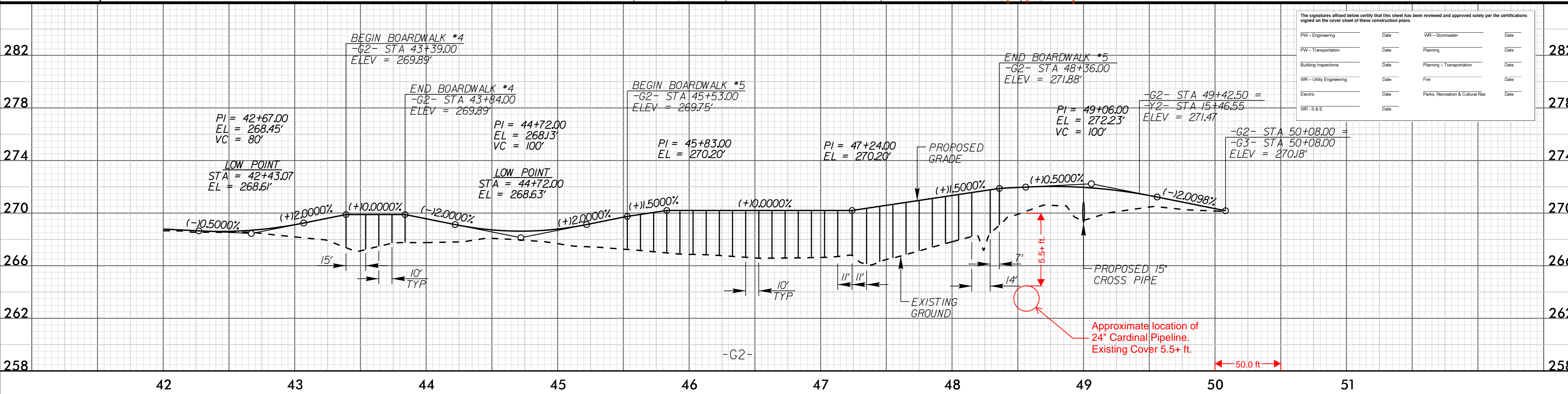


MANHOLE#	TOP ELEV.	INVERT IN	INVERT OUT	STORM#	TOP ELEV.	INVERT IN	INVERT OUT
MH12	269.79'	254.92'	254.72'	CB7	271.30'	267.70'	267.06'
MH13	268.96'	253.66'	253.46'	CBB	271.25'		267.97'
MH14	271.49'	252.41'	252.21'				
MH15	271.94'	265.37'	264.85'				
MH16	264.32'	264.33'	264.23'				
MH17	263.73'	263.73'	263.64'				
MH18	276.09'	263.23'	263.15'				



-Y2-	
PI Sta 10+85.84 Δ = 9' 48" 44.9" (LT) D = 5' 43" 46.5" L = 171.26' T = 85.84' R = 1,000.00'	PI Sta 12+21.85 Δ = 85' 12" 47.6" (RT) D = 104' 10" 26.9" L = 81.80' T = 50.59' R = 55.00'
-Y2-	
PI Sta 12+73.97 Δ = 38' 25" 16.3" (LT) D = 95' 29" 34.7" L = 40.23' T = 20.91' R = 60.00'	PI Sta 13+79.54 Δ = 90' 00" 00.0" (LT) D = 190' 59" 09.4" L = 47.12' T = 30.00' R = 30.00'
-Y2-	
PI Sta 14+60.11 Δ = 48' 41" 47.1" (RT) D = 95' 29" 34.7" L = 50.99' T = 27.15' R = 60.00'	PI Sta 15+10.35 Δ = 47' 30" 04.4" (LT) D = 95' 29" 34.7" L = 49.74' T = 26.40' R = 60.00'
-G2-	
PI Sta 42+80.67 Δ = 21' 50" 28.2" (RT) D = 28' 38" 52.4" L = 76.24' T = 38.59' R = 200.00'	PI Sta 44+44.76 Δ = 1' 16" 52.3" (LT) D = 2' 51" 53.2" L = 44.72' T = 22.36' R = 2,000.00'
PI Sta 44+89.48 Δ = 1' 16" 52.3" (RT) D = 2' 51" 53.2" L = 44.72' T = 22.36' R = 2,000.00'	PI Sta 50+55.44 Δ = 7' 41" 42.4" (LT) D = 14' 19" 26.2" L = 53.72' T = 26.90' R = 400.00'

PHASE 1 SEE SHEET 10 FOR -Y2- PROFILE



The signatures affixed below certify that this sheet has been reviewed and approved solely per the certifications signed on the cover sheet of these construction plans.

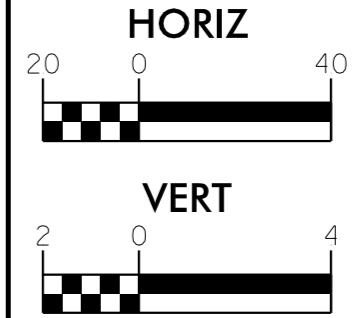
	Date		Date
PW - Engineering		WR - Stormwater	
PW - Transportation		Planning	
Building Inspections		Planning - Transportation	
WR - Utility Engineering		Fire	
Electric		Parks, Recreation & Cultural Res	
WR - S & E			

REV. No.	REVISION	DATE	DRAWN BY	CHECKED BY

PREPARED IN THE OFFICE OF:

NO LICENSE #0102
421 FAYETTEVILLE STREET, SUITE 600
RALEIGH, NORTH CAROLINA 27601
PHONE: (919) 677-2000

GREENWAY AND
DRAINAGE PLANS



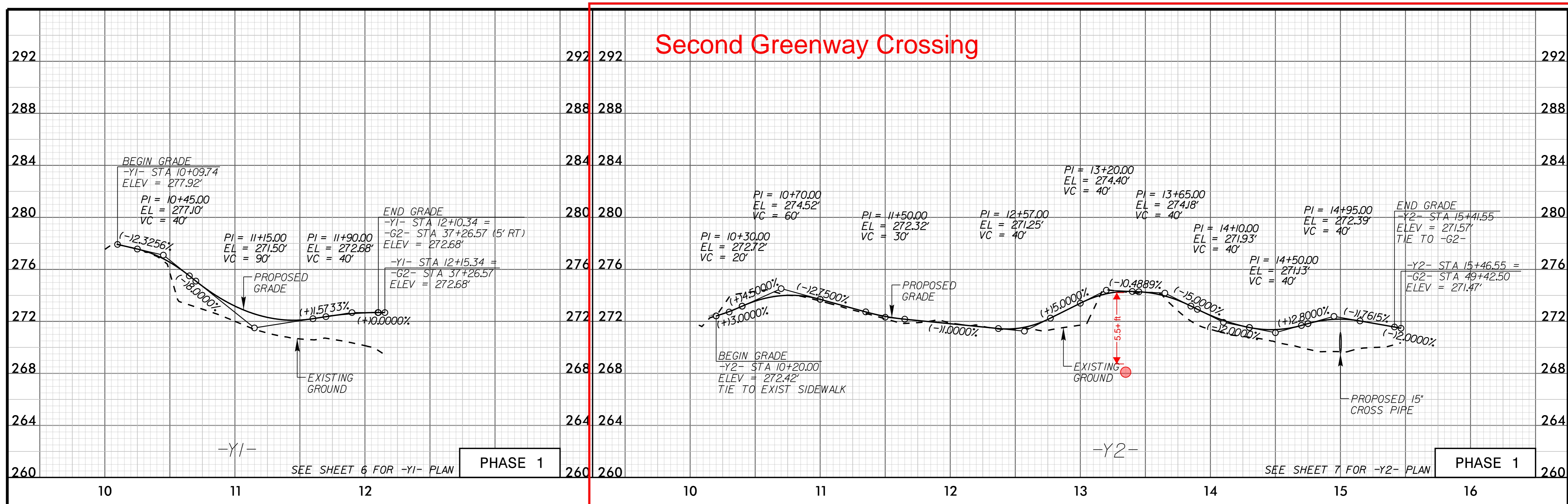
PROJECT: BEAVER CREEK GREENWAY
EXTENSION
PHASES 1, 2 & 1A

JOB NUMBER: EB-6021 SHEET NUMBER: 7

K:\RAL_Roadway\01200026 - Beaver Creek Greenway\Plan\Plan Sheets\BCC_pst_07.dgn

4/18/2021

Second Greenway Crossing



The signatures affixed below certify that this sheet has been reviewed and approved solely per the certifications signed on the cover sheet of these construction plans.

PW - Engineering	Date	WR - Stormwater	Date
PW - Transportation	Date	Planning	Date
Building Inspections	Date	Planning - Transportation	Date
WR - Utility Engineering	Date	Fire	Date
Electric	Date	Parks, Recreation & Cultural Res.	Date
WR - S & E	Date		

K:\PAL_Roadway\01200026 - Beaver Creek Greenway\Plan\Plan Sheets\BCG_pst_1.dwg

REV. No.	REVISION	DATE	DRAWN BY	CHECKED BY

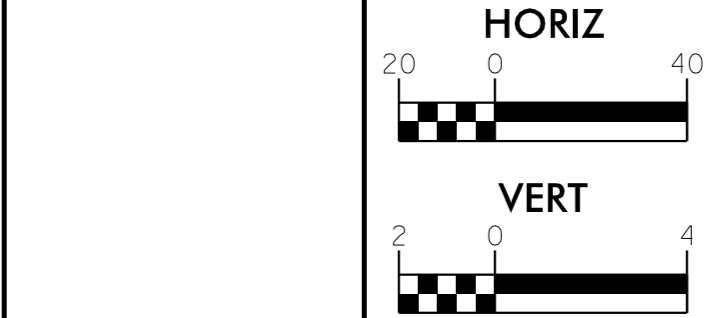
This document, together with the concepts and designs presented herein, as an instrument of service, is intended only for the specific purpose and client for which it was prepared. Reuse of and improper reliance on this document without written authorization and adoption by Kimley-Horn and Associates, Inc. shall be without liability to Kimley-Horn and Associates, Inc. Copyright Kimley-Horn and Associates, Inc., 2019

PREPARED IN THE OFFICE OF:

Kimley»Horn

NC LICENSE #0102
421 FAYETTEVILLE STREET, SUITE 600
RALEIGH, NORTH CAROLINA 27601
PHONE: (919) 677-2000

**GREENWAY AND
DRAINAGE PLANS**



PROJECT: **BEAVER CREEK GREENWAY
EXTENSION
PHASES 1, 2 & 1A**

JOB NUMBER: EB-6021 SHEET NUMBER: 10

COMBINED CLEARING AND FINAL PHASES FOR CONSTRUCTION SHEET 7

DOCUMENT NOT CONSIDERED FINAL UNLESS ALL SIGNATURES COMPLETED

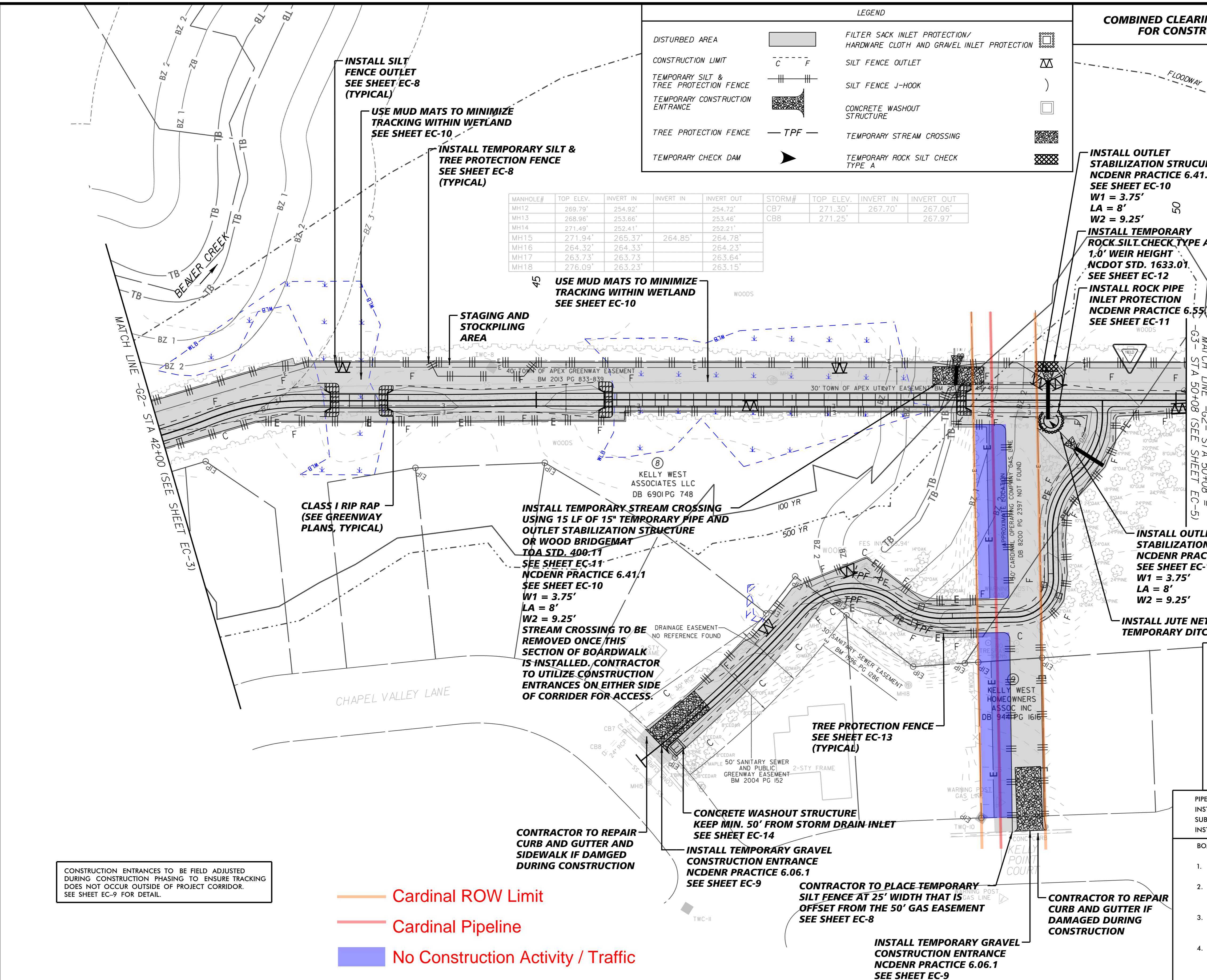
The signatures affixed below certify that this sheet has been reviewed and approved solely per the certifications signed on the cover sheet of these construction plans.

PW - Engineering	Date	WR - Stormwater	Date
PW - Transportation	Date	Planning	Date
Building Inspections	Date	Planning - Transportation	Date
WR - Utility Engineering	Date	Fire	Date
Electric	Date	Parks, Recreation & Cultural Res	Date
WR - S & E	Date		

LEGEND

DISTURBED AREA		FILTER SACK INLET PROTECTION/HARDWARE CLOTH AND GRAVEL INLET PROTECTION	
CONSTRUCTION LIMIT		SILT FENCE OUTLET	
TEMPORARY SILT & TREE PROTECTION FENCE		SILT FENCE J-HOOK	
TEMPORARY CONSTRUCTION ENTRANCE		CONCRETE WASHOUT STRUCTURE	
TREE PROTECTION FENCE		TEMPORARY STREAM CROSSING	
TEMPORARY CHECK DAM		TEMPORARY ROCK SILT CHECK TYPE A	

MANHOLE#	TOP ELEV.	INVERT IN	INVERT IN	INVERT OUT	STORM#	TOP ELEV.	INVERT IN	INVERT OUT
MH12	269.79'	254.92'		254.72'	CB7	271.30'	267.70'	267.06'
MH13	268.96'	253.66'		253.46'	CB8	271.25'		267.97'
MH14	271.49'	252.41'		252.21'				
MH15	271.94'	265.37'	264.85'	264.78'				
MH16	264.32'	264.33'		264.23'				
MH17	263.73'	263.73'		263.64'				
MH18	276.09'	263.23'		263.15'				



CONSTRUCTION ENTRANCES TO BE FIELD ADJUSTED DURING CONSTRUCTION PHASING TO ENSURE TRACKING DOES NOT OCCUR OUTSIDE OF PROJECT CORRIDOR. SEE SHEET EC-9 FOR DETAIL.

- Cardinal ROW Limit
- Cardinal Pipeline
- No Construction Activity / Traffic

- TEMPORARY STREAM CROSSING EROSION CONTROL PHASING:**
- CONTRACTOR TO INSTALL ALL EROSION CONTROL MEASURES BEFORE ANY CLEARING AND GRUBBING IS PERFORMED.
 - CROSSING AND ALL NECESSARY EROSION CONTROL MEASURES SHALL BE INSTALLED/ADJUSTED IN ONE DAY.
 - CONTRACTOR TO ACCESS TEMPORARY STREAM CROSSING LOCATIONS USING PROPOSED GREENWAY PATH FOOTPRINT. USE MUD MATS (SEE EROSION CONTROL DETAILS) IN WETLAND AREAS AND OTHER LOW AREAS TO LIMIT IMPACTS AS NEEDED.
 - CONTRACTOR TO DEWATER TEMPORARY STREAM CROSSING AREAS AS NEEDED USING IMPERVIOUS DIKES, SPECIAL STILLING BASINS, AND BYPASSING PUMPING.
 - AFTER TEMPORARY STREAM CROSSINGS AND RIP RAP OUTLETS ARE REMOVED, CONTRACTOR IS TO STABILIZE ALL DISTURBED AREAS AND RE-ESTABLISH STREAM BANK TO EXISTING CONDITIONS USING EROSION CONTROL MATTING, SEEDING, AND MULCH TO MAINTAIN A VIGOROUS, DENSE, VEGETATIVE COVER.

PIPES SHALL BE INSTALLED IN THE DRY (WITH A MIN. 3 DAYS OF DRY WEATHER DURING INSTALLATION) OR PROVIDE COFFER DAM AND PUMP AROUND. COFFER DAM DETAIL MUST BE SUBMITTED FOR APPROVAL PRIOR TO CONSTRUCTION. COFFER DAM IS INCIDENTAL TO CULVERT INSTALLATION

- BOARDWALK AND CULVERT EROSION CONTROL PHASING:**
- CONTRACTOR TO INSTALL ALL EROSION CONTROL MEASURES BEFORE ANY CLEARING AND GRUBBING IS PERFORMED.
 - CONTRACTOR TO ACCESS BOARDWALK AND CULVERT LOCATIONS USING PROPOSED GREENWAY PATH FOOTPRINT. USE MUD MATS (SEE EROSION CONTROL DETAILS) IN WETLAND AREAS AND OTHER LOW AREAS TO LIMIT IMPACTS.
 - CONTRACTOR TO DEWATER EXCAVATED AREAS AS NEEDED USING IMPERVIOUS DIKES, SPECIAL STILLING BASINS, AND BYPASSING PUMPING (DEWATERING METHOD INCIDENTAL TO BOARDWALK INSTALLATION).
 - AFTER BOARDWALK AND CULVERTS ARE SET, CONTRACTOR IS TO STABILIZE ALL DISTURBED AREAS AND STREAM SLOPES USING EROSION CONTROL MATTING, SEEDING (SEE SHEET EC-7), AND MULCH TO MAINTAIN A VIGOROUS, DENSE, VEGETATIVE COVER.

K:\RAL_Roadway\01200026 - Beaver Creek Greenway\Plan\Plan Sheets\BCC_sec_04.dgn

4/8/2021

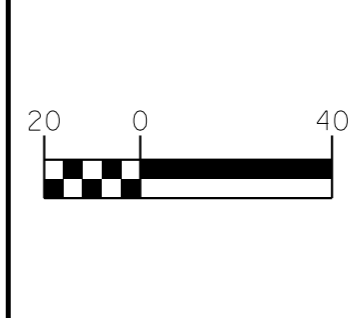
REV. No.	REVISION	DATE	DRAWN BY	CHECKED BY

PREPARED IN THE OFFICE OF:

Kimley & Horn

NO LICENSE #0102
421 FAYETTEVILLE STREET, SUITE 600
RALEIGH, NORTH CAROLINA 27601
PHONE: (919) 677-2000

GRADING AND
EROSION CONTROL PLANS



PROJECT: **BEAVER CREEK GREENWAY EXTENSION PHASES 1, 2 & 1A**

JOB NUMBER: EB-6021 SHEET NUMBER: EC-4