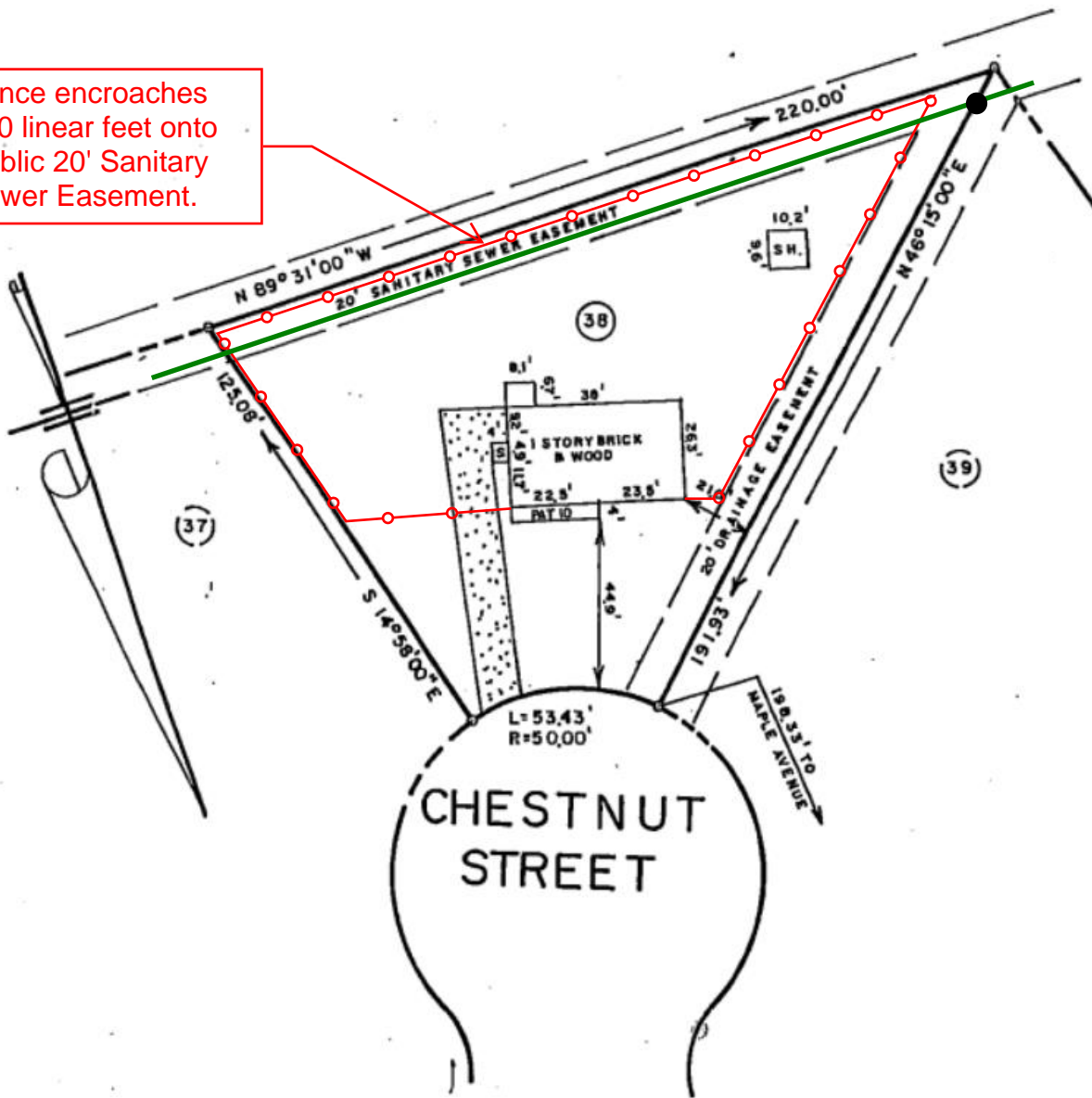


EXHIBIT A

1701 Chestnut Street

Lot 38 - Knollwood Estates

Fence encroaches 210 linear feet onto Public 20' Sanitary Sewer Easement.



NOTE:
 THIS MAY NOT BE A CERTIFIED SURVEY AND HAS NOT BEEN
 REVIEWED BY LOCAL GOVERNMENT AGENCY FOR COMPLIANCE
 WITH ANY APPLICABLE LAND DEVELOPMENT REGULATIONS AND
 HAS NOT BEEN REVIEWED FOR COMPLIANCE WITH RECORDING
 REQUIREMENTS FOR PLATS