



Bateman Civil Survey Company

Engineers • Surveyors • Planners

2524 Reliance Avenue, Apex, NC 27539 Ph: 919.577.1080 Fax: 919.577.1081

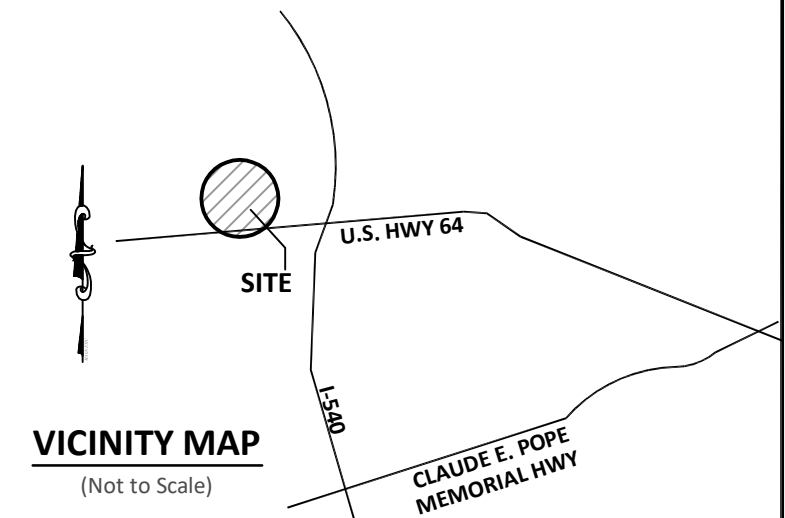
www.batemancivilsurvey.com info@batemancivilsurvey.com

NCBELS Firm No. C-2378

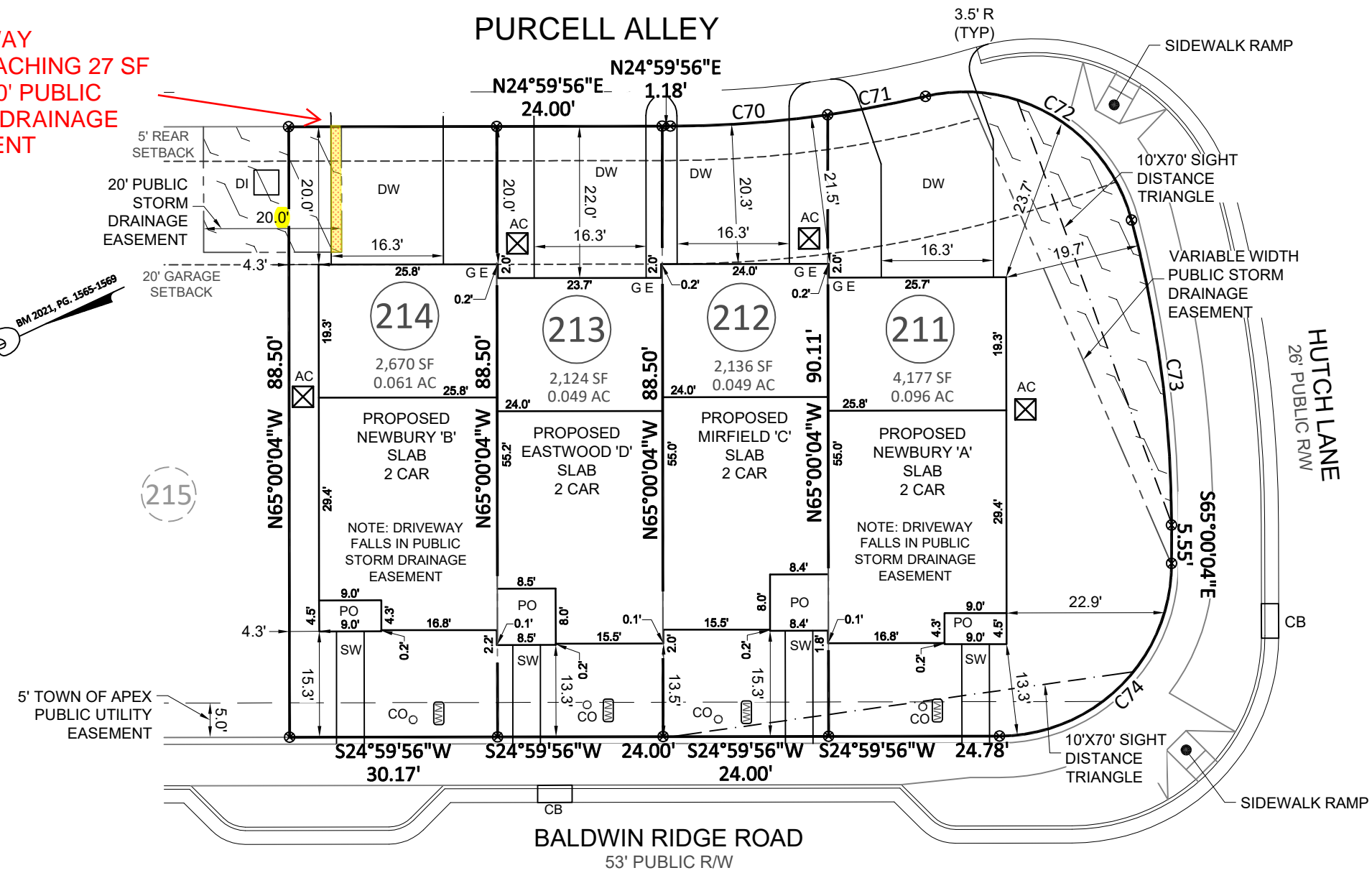
EXHIBIT A

LOT 214 INFORMATION:

PIN: 0722764746
ADDRESS: 935 BALDWIN RIDGE ROAD
TOTAL LOT AREA = 0.061 AC = 2,670 SF
HOUSE = 1,330 SF
PORCH = 41 SF
SIDEWALK = 61 SF
DRIVEWAY = 325 SF
AC PAD = 9 SF
TOTAL PROPOSED IMPERVIOUS = 1,766 SF
PERCENT IMPERVIOUS = 66.1 %



DRIVEWAY ENCROACHING 27 SF ONTO 20' PUBLIC STORM DRAINAGE EASEMENT



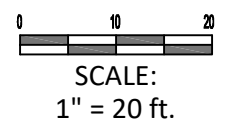
NOTE:
THIS MAP MAY NOT BE A CERTIFIED SURVEY AND HAS NOT BEEN REVIEWED BY A LOCAL GOVERNMENT AGENCY FOR COMPLIANCE WITH ANY APPLICABLE LAND DEVELOPMENT REGULATIONS AND HAS NOT BEEN REVIEWED FOR COMPLIANCE WITH RECORDING REQUIREMENTS FOR PLATS.

SIDE = 0'

TOWNES AT WESTFORD PH. 3B - LOTS 211-214
BALDWIN RIDGE LANE, APEX, NC
WHITE OAK TOWNSHIP, WAKE COUNTY

DATE: 3/20/23 DRAWN BY: CPV CHECKED BY: SPC

REFERENCE: BM 2021, PG. 1565-1569 BCS# 190363 SCALE: 1" = 20'



P:\2019 Projects\190363 Townes at Westford\dwg\190363 WESTFORD PH.3 B.dwg, 3/21/2023 9:38:55 AM, Foit Reader PDF Printer