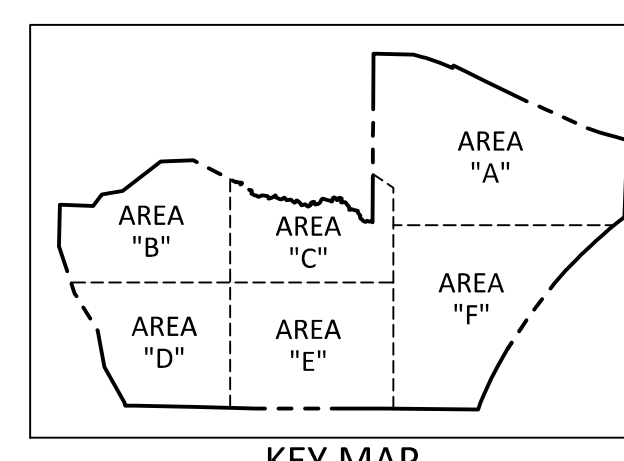
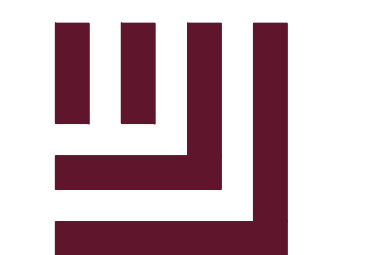


PHASING DIAGRAM  
SCALE: NTS



KEY MAP



**McADAMS**  
The John R. McAdams Company, Inc.  
2905 Meridian Parkway  
Durham, NC 27713

phone 919. 361. 5000  
fax 919. 361. 2269  
license number: C-0293, C-187

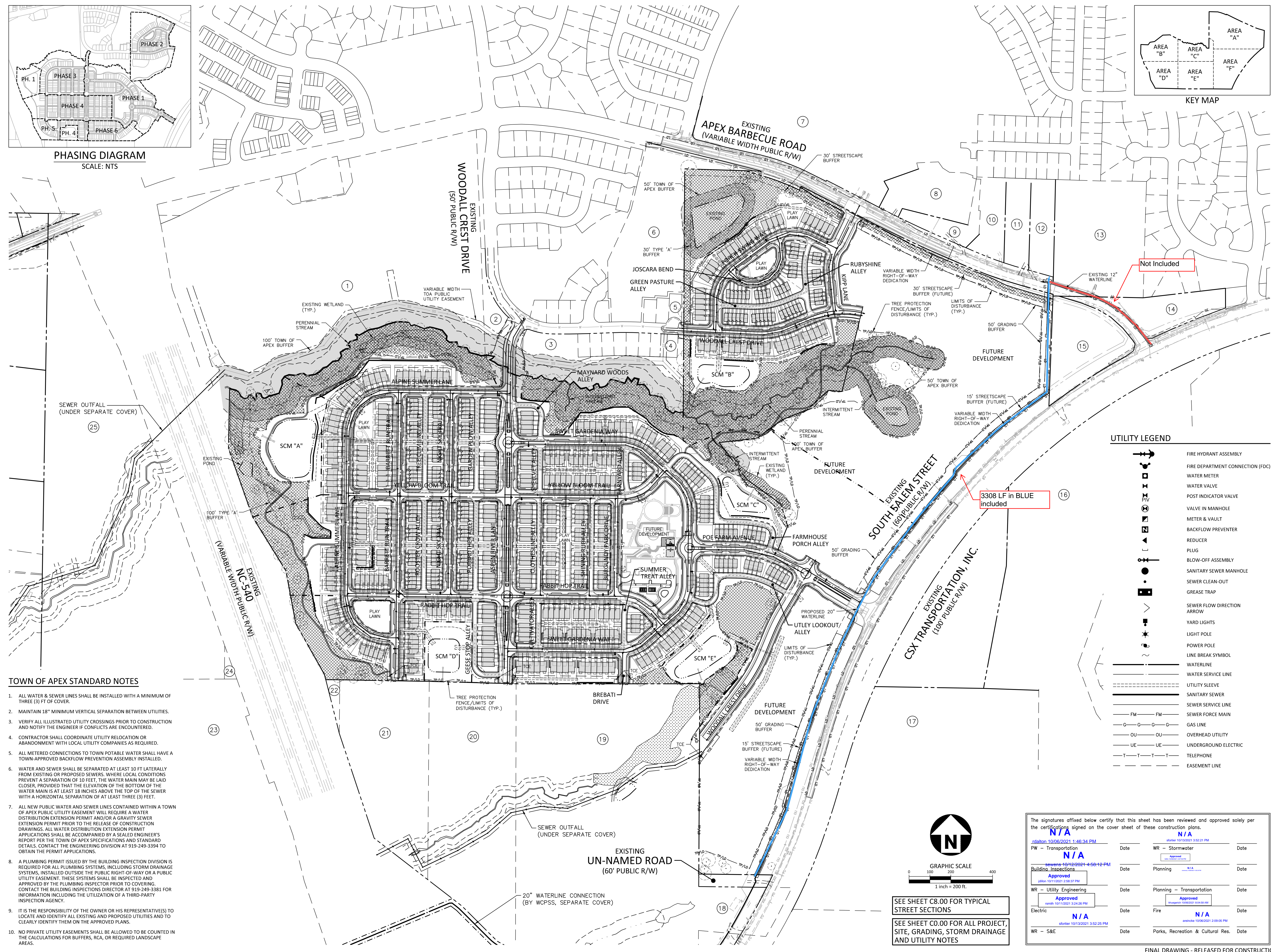
www.mcadamsco.com

**CLIENT**

LENNAR  
1100 PERIMETER PARK, SUITE 112  
MORRISVILLE, NC 27560  
PHONE: 919. 465. 5929



**DEPOT 499**  
CONSTRUCTION DRAWINGS  
0 APEX BARBECUE ROAD  
APEX, NORTH CAROLINA, 27502

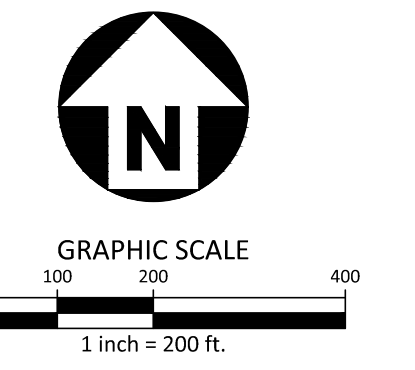


**UTILITY LEGEND**

- FIRE HYDRANT ASSEMBLY
- FIRE DEPARTMENT CONNECTION (FDC)
- WATER METER
- WATER VALVE
- POST INDICATOR VALVE
- VALVE IN MANHOLE
- METER & VAULT
- BACKFLOW PREVENTER
- REDUCER
- PLUG
- BLOW-OFF ASSEMBLY
- SANITARY SEWER MANHOLE
- SEWER CLEAN-OUT
- GREASE TRAP
- SEWER FLOW DIRECTION ARROW
- YARD LIGHTS
- LIGHT POLE
- POWER POLE
- LINE BREAK SYMBOL
- WATERLINE
- WATER SERVICE LINE
- UTILITY SLEEVE
- SANITARY SEWER
- SEWER SERVICE LINE
- SEWER FORCE MAIN
- GAS LINE
- OVERHEAD UTILITY
- UNDERGROUND ELECTRIC
- TELEPHONE
- EASEMENT LINE

**TOWN OF APEX STANDARD NOTES**

1. ALL WATER & SEWER LINES SHALL BE INSTALLED WITH A MINIMUM OF THREE (3) FT OF COVER.
2. MAINTAIN 18" MINIMUM VERTICAL SEPARATION BETWEEN UTILITIES.
3. VERIFY ALL ILLUSTRATED UTILITY CROSSINGS PRIOR TO CONSTRUCTION AND NOTIFY THE ENGINEER IF CONFLICTS ARE ENCOUNTERED.
4. CONTRACTOR SHALL COORDINATE UTILITY RELOCATION OR ABANDONMENT WITH LOCAL UTILITY COMPANIES AS REQUIRED.
5. ALL METERED CONNECTIONS TO TOWN POTABLE WATER SHALL HAVE A TOWN-APPROVED BACKFLOW PREVENTION ASSEMBLY INSTALLED.
6. WATER AND SEWER SHALL BE SEPARATED AT LEAST 10 FT LATERALLY FROM EXISTING OR PROPOSED SEWERS. WHERE LOCAL CONDITIONS PREVENT A SEPARATION OF 10 FEET, THE WATER MAIN MAY BE LAID CLOSER, PROVIDED THAT THE ELEVATION OF THE BOTTOM OF THE WATER MAIN IS AT LEAST 18 INCHES ABOVE THE TOP OF THE SEWER WITH A HORIZONTAL SEPARATION OF AT LEAST THREE (3) FEET.
7. ALL NEW PUBLIC WATER AND SEWER LINES CONTAINED WITHIN A TOWN OF APEX PUBLIC UTILITY EASEMENT WILL REQUIRE A WATER DISTRIBUTION EXTENSION PERMIT AND/OR A GRAVITY SEWER EXTENSION PERMIT PRIOR TO THE RELEASE OF CONSTRUCTION DRAWINGS. ALL WATER DISTRIBUTION EXTENSION PERMIT APPLICATIONS SHALL BE ACCOMPANIED BY A SEALED ENGINEER'S REPORT PER THE TOWN OF APEX SPECIFICATIONS AND STANDARD DETAILS. CONTACT THE ENGINEERING DIVISION AT 919-249-3394 TO OBTAIN THE PERMIT APPLICATIONS.
8. A PLUMBING PERMIT ISSUED BY THE BUILDING INSPECTION DIVISION IS REQUIRED FOR ALL PLUMBING SYSTEMS, INCLUDING STORM DRAINAGE SYSTEMS, INSTALLED OUTSIDE THE PUBLIC RIGHT-OF-WAY OR A PUBLIC UTILITY EASEMENT. THESE SYSTEMS SHALL BE INSPECTED AND APPROVED BY THE PLUMBING INSPECTOR PRIOR TO COVERING. CONTACT THE BUILDING INSPECTIONS DIRECTOR AT 919-249-3381 FOR INFORMATION INCLUDING THE UTILIZATION OF A THIRD-PARTY INSPECTION AGENCY.
9. IT IS THE RESPONSIBILITY OF THE OWNER OR HIS REPRESENTATIVE(S) TO LOCATE AND IDENTIFY ALL EXISTING AND PROPOSED UTILITIES AND TO CLEARLY IDENTIFY THEM ON THE APPROVED PLANS.
10. NO PRIVATE UTILITY EASEMENTS SHALL BE ALLOWED TO BE COUNTED IN THE CALCULATIONS FOR BUFFERS, RCA, OR REQUIRED LANDSCAPE AREAS.



SEE SHEET C8.00 FOR TYPICAL STREET SECTIONS  
SEE SHEET C0.00 FOR ALL PROJECT, SITE, GRADING, STORM DRAINAGE AND UTILITY NOTES

The signatures affixed below certify that this sheet has been reviewed and approved solely per the certifications signed on the cover sheet of these construction plans.			
<b>N/A</b> Judson 10/06/2021 1:46:34 PM PW - Transportation	<b>N/A</b> Judson 10/13/2021 3:52:21 PM WR - Stormwater	Date	Date
<b>N/A</b> Sewans 10/12/2021 4:56:12 PM Building Inspections	<b>N/A</b> Judson 10/13/2021 3:58:37 PM Planning	Date	Date
<b>Approved</b> Judson 10/13/2021 3:58:37 PM WR - Utility Engineering	<b>Approved</b> Judson 10/13/2021 3:58:37 PM Planning - Transportation	Date	Date
<b>Approved</b> Judson 10/13/2021 3:24:26 PM Electric	<b>Approved</b> Judson 10/13/2021 3:52:25 PM Fire	Date	Date
<b>N/A</b> WR - S&E	<b>N/A</b> Judson 10/13/2021 3:52:25 PM Parks, Recreation & Cultural Res.	Date	Date

**REVISIONS**

NO.	DATE	DESCRIPTION
1	04.01.2021	PER TOWN OF APEX COMMENTS
2	06.01.2021	PER TOWN OF APEX COMMENTS
3	07.09.2021	PER TOWN OF APEX COMMENTS
4	08.13.2021	PER TOWN OF APEX COMMENTS

**PLAN INFORMATION**

PROJECT NO. LEN-19090  
FILENAME LEN19090-CD-OAU1  
CHECKED BY RCA  
DRAWN BY KWH  
SCALE 1"=200'  
DATE 08.13.2021

**SHEET**

**OVERALL UTILITY PLAN**  
**C4.00**