

LINE	BEARING	LENGTH
L18	N 72°10'30" E	32.53'
L19	N 55°03'19" E	19.13'
L20	S 14°08'20" E	32.09'
L21	S 14°08'20" E	147.06'
L22	S 15°13'05" W	62.23'
L23	S 09°43'52" E	158.62'
L24	S 07°05'10" E	235.86'
L25	S 82°54'44" W	60.00'
L26	N 07°05'10" W	235.86'
L27	N 09°43'52" W	158.48'
L28	N 87°10'16" E	10.00'
L29	N 85°17'50" E	133.83'
L30	N 82°54'44" E	83.91'
L31	S 17°06'46" W	1.06'
L32	S 07°05'16" E	49.03'
L33	S 82°54'44" W	83.48'
L34	S 82°54'44" W	334.85'
L35	S 82°54'44" W	175.94'
L36	S 82°54'44" W	812.94'
L37	N 00°38'36" E	153.57'
L38	N 00°38'36" E	165.49'
L39	N 38°12'54" E	24.60'
L40	S 00°38'36" W	136.73'
L41	S 65°36'06" E	29.50'
L42	S 60°04'18" E	39.57'
L43	S 87°10'16" W	33.78'
L44	N 07°05'11" W	14.10'
L45	N 17°18'39" E	49.39'
L46	N 82°54'44" E	84.62'
L47	N 43°51'24" W	51.44'
L48	N 47°56'18" E	33.36'
L49	S 86°11'19" E	38.90'
L50	S 50°33'34" E	39.25'
L51	S 59°06'18" E	39.79'
L52	N 89°00'20" E	138.34'
L53	N 89°00'20" E	51.46'
L54	S 00°59'40" E	20.00'
L55	S 89°00'20" W	52.62'
L56	S 89°00'20" W	135.05'
L57	N 01°01'35" W	18.15'
L58	N 11°29'48" E	18.03'
L59	N 52°05'07" E	25.18'
L60	S 88°40'49" E	82.21'
L61	S 66°42'50" E	21.97'
L62	S 34°54'58" E	18.52'
L63	S 43°33'13" E	14.64'
L64	S 38°09'26" E	13.64'
L65	S 45°10'12" E	13.51'
L66	S 33°25'26" E	14.60'
L67	S 41°20'52" E	8.51'
L68	S 04°44'55" E	9.90'
L69	S 22°24'58" W	8.64'
L70	N 74°59'48" W	35.87'
L71	S 81°20'09" W	21.21'
L72	S 43°11'05" W	16.90'
L73	S 85°07'43" W	48.48'
L74	N 89°39'40" W	46.38'
L75	N 51°33'46" W	11.04'
L76	N 12°50'55" W	25.60'
L77	S 85°17'50" W	138.17'
L78	N 00°38'36" E	73.07'
L79	N 00°38'36" E	30.22'

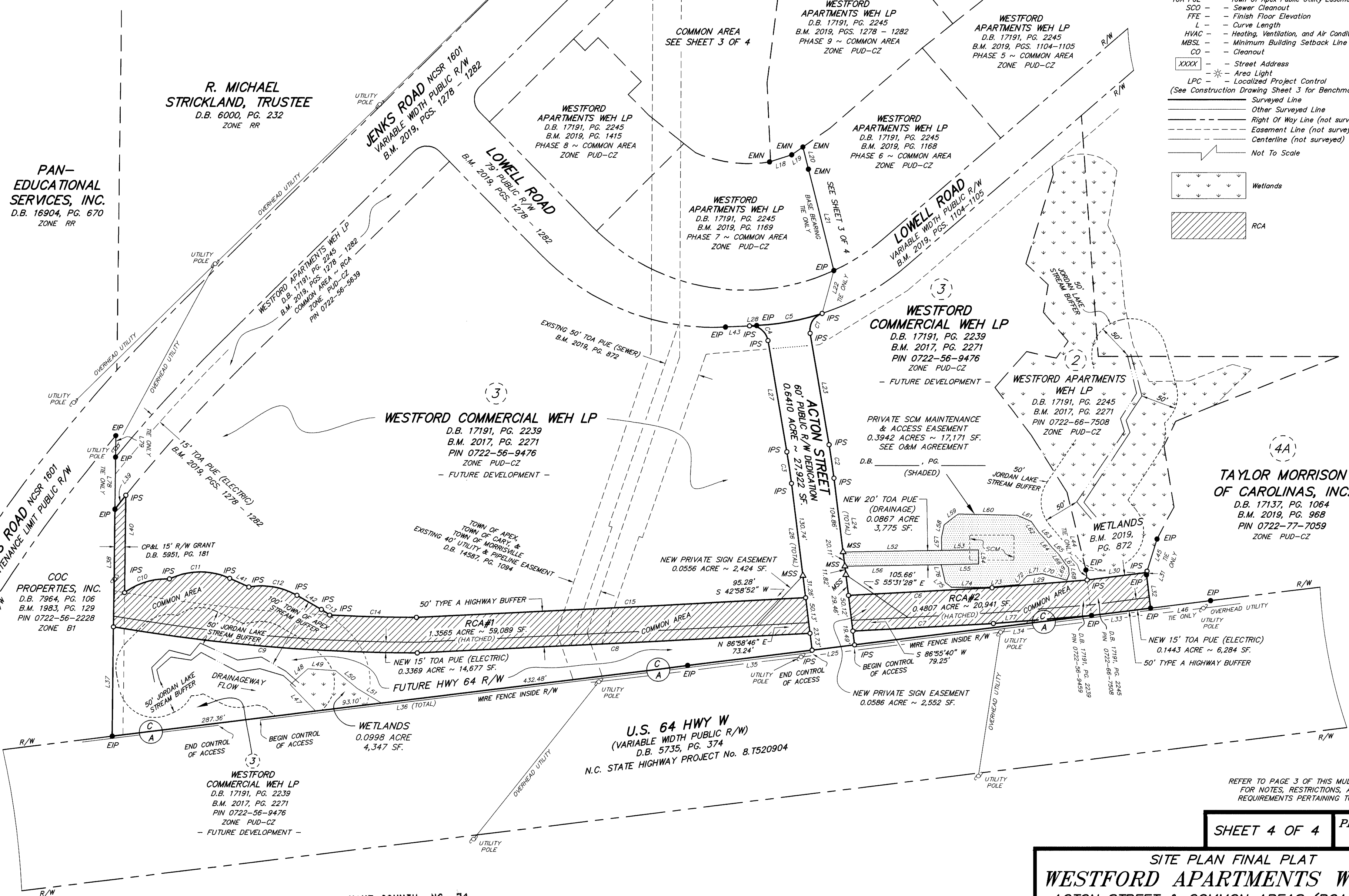
CURVE	LENGTH	RADIUS	BEARING	CHORD
C1	35.59'	25.00'	S 31°03'07" W	32.66'
C2	47.55'	1030.00'	S 08°24'31" E	47.55'
C3	44.78'	970.00'	N 08°24'31" W	44.78'
C4	36.26'	25.00'	N 51°16'48" W	33.16'
C5	93.68'	350.00'	N 79°30'11" E	93.41'
C6	201.63'	151221.65'	N 86°54'20" E	201.63'
C7	197.28'	151271.65'	S 86°54'18" W	197.28'
C8	551.47'	151271.65'	S 87°04'11" W	551.47'
C9	427.97'	2529.78'	N 85°08'34" W	427.46'
C10	66.94'	100.00'	N 72°50'18" E	65.70'
C11	87.33'	100.00'	N 89°22'50" E	84.58'
C12	69.90'	100.00'	S 80°05'48" E	68.49'
C13	13.98'	100.00'	S 56°04'00" E	13.97'
C14	121.65'	2479.78'	S 88°33'20" E	121.64'
C15	546.50'	151221.65'	N 87°04'12" E	546.50'



Staley C. Smith
Professional Land Surveyor
L-3766
License Number

DESIGN CONTROLS - MULTI-FAMILY
FRONT SETBACK 10'
SIDE SETBACK 20'
REAR SETBACK 15'
MAXIMUM BUILT-UPON AREA 70%
MAXIMUM HEIGHT 5 STORIES (65')

- Legend**
- EIP - Existing Iron Pipe
 - EMN - Existing Magnetic Nail
 - IPS - Iron Pipe Set
 - MNS - Magnetic Nail Set
 - CP - Calculated Point
 - MSS - 12" Metal Spike Set
 - SCM - Stormwater Control Measure
 - RCA - Resource Conservation Area
 - R/W - Right Of Way
 - TOA PUE - Town Of Apex Public Utility Easement
 - SCO - Sewer Cleanout
 - FFE - Finish Floor Elevation
 - L - Curve Length
 - HVAC - Heating, Ventilation, and Air Conditioning
 - MBSL - Minimum Building Setback Line
 - CO - Cleanout
 - XXXX - Street Address
 - LPC - Area Light
 - Localized Project Control (See Construction Drawing Sheet 3 for Benchmark)
 - Surveyed Line
 - Other Surveyed Line
 - Right Of Way Line (not surveyed)
 - Easement Line (not surveyed)
 - Centerline (not surveyed)
 - Not To Scale
 - Wetlands
 - RCA



PAN-EDUCATIONAL SERVICES, INC.
D.B. 16904, PG. 670
ZONE RR

R. MICHAEL STRICKLAND, TRUSTEE
D.B. 6000, PG. 232
ZONE RR

COC PROPERTIES, INC.
D.B. 7964, PG. 106
B.M. 1983, PG. 129
PIN 0722-56-2228
ZONE B1

WESTFORD COMMERCIAL WEH LP
D.B. 17191, PG. 2239
B.M. 2017, PG. 2271
PIN 0722-56-9476
ZONE PUD-CZ
- FUTURE DEVELOPMENT -

WESTFORD COMMERCIAL WEH LP
D.B. 17191, PG. 2239
B.M. 2017, PG. 2271
PIN 0722-56-9476
ZONE PUD-CZ
- FUTURE DEVELOPMENT -

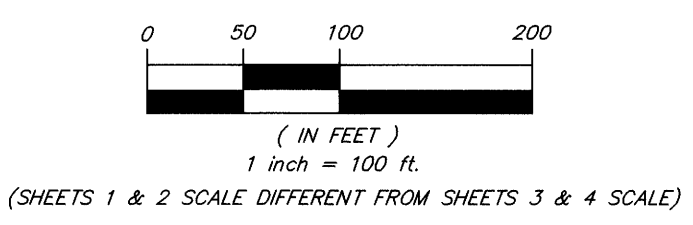
WESTFORD APARTMENTS WEH LP
D.B. 17191, PG. 2245
B.M. 2017, PG. 2271
PIN 0722-66-7508
ZONE PUD-CZ

TAYLOR MORRISON OF CAROLINAS, INC.
D.B. 17137, PG. 1064
B.M. 2019, PG. 968
PIN 0722-77-7059
ZONE PUD-CZ

U.S. 64 HWY W
(VARIABLE WIDTH PUBLIC R/W)
D.B. 5735, PG. 374
N.C. STATE HIGHWAY PROJECT No. 8.T520904

WESTFORD COMMERCIAL WEH LP
D.B. 17191, PG. 2239
B.M. 2017, PG. 2271
PIN 0722-56-9476
ZONE PUD-CZ
- FUTURE DEVELOPMENT -

WAKE COUNTY, NC 74
CHARLES P. GILLIAM
REGISTER OF DEEDS
PRESENTED & RECORDED ON
09/11/2019 14:07:26
BOOK: BM2019 PAGE: 01552



LISTED OWNERS:
(NOT A TITLE VERIFICATION)
WESTFORD APARTMENTS WEH LP
2900 LINDEN LANE
SUITE 300
SILVER SPRING, MD 20910
WESTFORD COMMERCIAL WEH LP
2900 LINDEN LANE
SUITE 300
SILVER SPRING, MD 20910

SITE PLAN FINAL PLAT
WESTFORD APARTMENTS WEH LP
ACTON STREET & COMMON AREAS (RCA# 1 & 2)
TOWN OF APEX, WHITE OAK TOWNSHIP, WAKE COUNTY, N.C.

Smith and Smith surveyors
FIRM LICENSE No. C-0155
P.O. BOX 457
APEX, N.C. 27502
(919) 362-7111
PITTSBORO, N.C. 27312
(919) 542-4321

DATE JULY 26, 2019
SCALE 1" = 100'
DRAWN BY WEH
PROJECT NO. 17-50

SHEET 4 OF 4
PIN 0722-67-3206
0722-56-9476
0722-66-7508