

- TOWN OF APEX UTILITY PLAN NOTES**
- ALL GRADING AND SUPPORT STRUCTURES ASSOCIATED WITH ANY RETAINING STRUCTURE SHALL NOT ENCRUSH INTO ANY REQUIRED BUFFER OR PROTECTED AREA (E.G. R.A. THE CRITICAL ROOT ZONES OF TREES, PUBLIC UTILITY EASEMENTS AND RIGHTS-OF-WAY), AND SHALL BE CONTAINED ENTIRELY ON SITE.
  - ALL GRADING PLANS MUST COMPLY WITH THE REQUIREMENTS OUTLINE IN APPENDIX J OF THE BUILDING CODE.
  - SITE ELEMENTS REQUIRED TO SATISFY RECREATIONAL REQUIREMENTS SUCH AS, BUT NOT LIMITED TO, PLAY FIELDS, GREENWAY TRAILS AND ITEMS TYPICALLY ASSOCIATED WITH THEM (BENCHES, TRASH CONTAINERS, SIGNS, ETC.) MUST MEET ANY APPLICABLE STANDARDS FOUND IN THE TOWN OF APEX STANDARD SPECIFICATIONS AND STANDARD DETAILS AND THE REQUIREMENTS OF THE TOWN OF APEX PARKS AND RECREATION DEPARTMENT.
  - THE SCREENING OF LOADING DOCKS, ROLL-OUT TRASH CONTAINERS, DUMPSTERS, OUTDOOR STORAGE, MECHANICAL AND HVAC EQUIPMENT, AND SIMILAR FACILITIES ON THE ROOF, GROUND, OR BUILDING SHALL MEET THE REQUIREMENTS OF UDO SEC. 6.2.8. SPECIFICALLY, SCREENING MUST BE DONE SO THAT:  
A) IT IS INCORPORATED INTO THE OVERALL DESIGN THEME OF THE BUILDING AND LANDSCAPE.  
B) SCREENING MATERIALS ARE NOT DIFFERENT FROM OR INFERIOR TO THE PRINCIPAL MATERIALS OF THE BUILDING OR LANDSCAPE, AND ARE SIMILAR IN MATERIALS AND COLOR.  
C) SCREENED ITEMS ARE OUT OF VIEW FROM ADJACENT PROPERTIES AND PUBLIC STREETS, AND A TOTALLY OPAQUE SCREEN IS ACHIEVED.  
D) ANY GROUND-MOUNTED HVAC OR OTHER MECHANICAL OR UTILITY EQUIPMENT SIX (6) FEET TALL OR HIGHER MUST BE FENCED AND LANDSCAPED.  
E) DUMPSTER ENCLOSURES MUST MEET THE ABOVE REQUIREMENTS PLUS BE EIGHT (8) FEET TALL OR THE HEIGHT OF THE DUMPSTER, WHICHEVER IS GREATER, AND BE BUILT OF MASONRY MATERIAL WITH OPAQUE GATES, WHERE PRACTICABLE, SHRUBS OR OTHER PLANTS MUST BE PLANTED OUTSIDE THE ENCLOSURE TO VISUALLY SOFTEN THE APPEARANCE.
  - ALL WATER AND SEWER LINES SHALL BE INSTALLED WITH A MINIMUM OF THREE (3) FEET OF COVER.
  - MAINTAIN A MINIMUM OF 18 INCHES OF VERTICAL SEPARATION BETWEEN UTILITIES.
  - VERIFY ALL ILLUSTRATED UTILITY CROSSINGS PRIOR TO CONSTRUCTION AND NOTIFY THE ENGINEER IF CONFLICTS ARE ENCOUNTERED.
  - CONTRACTOR SHALL COORDINATE UTILITY RELOCATION OR ABANDONMENT WITH LOCAL UTILITY COMPANIES AS REQUIRED.
  - ALL METERED CONNECTIONS TO TOWN POTABLE WATER SHALL HAVE A TOWN-APPROVED BACKFLOW PREVENTION ASSEMBLY INSTALLED.
  - WATER AND SEWER SHALL BE AT LEAST 10 FEET LATERALLY FROM EXISTING OR PROPOSED SEWERS. WHERE LOCAL CONDITIONS PRESENT A SEPARATION OF AT LEAST 10 FEET, THE WATER MAIN MAY BE Laid CLOSER, PROVIDED THAT THE ELEVATION OF THE BOTTOM OF THE WATER MAIN BE AT LEAST 18 INCHES ABOVE THE TOP OF THE SEWER WITH A HORIZONTAL SEPARATION OF AT LEAST THREE (3) FEET.
  - CONTRACTORS ARE NOT ALLOWED TO OPERATE ANY TOWN OF APEX WATER VALVES. ALL EXISTING VALVES WITHIN THE TOWN WATER SYSTEM SHALL BE OPERATED ONLY BY TOWN PERSONNEL. EXISTING VALVES WILL NOT BE OPERATED WITHOUT A MINIMUM NOTICE OF 24 HOURS. TOWN PERSONNEL SHALL OPERATE ALL NEW VALVES ONCE THEY HAVE BEEN TESTED, CERTIFIED, AND ACCEPTED.
  - ALL NEW PUBLIC WATER AND SEWER LINES CONTAINED WITHIN A TOWN OF APEX PUBLIC UTILITY EASEMENT WILL REQUIRE A WATER DISTRIBUTION EXTENSION PERMIT AND/OR A GRAVITY SEWER EXTENSION PERMIT TO THE RELEASE OF CONSTRUCTION DRAWINGS. ALL WATER DISTRIBUTION EXTENSION PERMIT APPLICATIONS SHALL BE ACCOMPANIED BY A SEALED ENGINEER'S REPORT PER THE TOWN OF APEX SPEC BOOK. PLEASE CONTACT THE ENGINEERING DIVISION AT 919-249-3384 TO OBTAIN THESE PERMIT APPLICATIONS.
  - A PLUMBING PERMIT ISSUED BY THE BUILDING INSPECTION DIVISION IS REQUIRED FOR ALL PLUMBING SYSTEMS INCLUDING STORM DRAINAGE SYSTEMS. THESE SYSTEMS SHALL BE INSPECTED AND APPROVED BY THE PLUMBING INSPECTOR PRIOR TO COVERING. CONTACT THE BUILDING INSPECTIONS DIRECTOR AT 919-249-3383 FOR INFORMATION INCLUDING THE UTILIZATION OF A THIRD-PARTY INSPECTION AGENCY.

UTILITIES LEGEND	
SYMBOL	DESCRIPTION
— FL — FL	FIRE LINE
— FM — FM	FORCE MAIN
— SS — SS	SANITARY SEWER PIPE
— W — W	WATER MAIN
— R — R	RECLAIMED WATER LINE
— T — T	TOWN OF APEX PUBLIC WATERLINE EASEMENT
— S — S	TOWN OF APEX PUBLIC SANITARY SEWER EASEMENT
— F — F	FIRE LANE
— B — B	BACKFLOW PREVENTER
— O — O	BLOW OFF
— F — F	FIRE DEPARTMENT CONNECTION (FDC)
— H — H	FIRE HYDRANT ASSEMBLY
— C — C	SEWER CLEANOUT
— M — M	SEWER MANHOLE
— V — V	WATER METER
— V — V	WATER VALVE

**NOTE:** SEE LIGHTING PLAN FOR POLE LOCATIONS, TYPES & HEIGHTS

**GRACE CHRISTIAN SCHOOL**  
ACSIS

**LITTLE**  
DIVERSIFIED ARCHITECTURAL CONSULTING

The signatures affixed below certify that this sheet has been reviewed and approved solely per the certifications signed on the cover sheet of these Construction Plans.	
Transportation Engineering	Planning
Building Inspections	Planning – Transportation
Water Resources – Utility Engineering	Fire
Water Resources Stormwater and S&EC	Parks, Recreation & Cultural Resources
Electric	

**WithersRavenel**  
115 McKean Drive | Cary, NC 27511  
License #: F-1479 | T: 919.469.3340 | www.withersravenel.com

**GREATER RALEIGH AREA CHRISTIAN EDUCATION INC.**  
1101 BUCK JONES RD. RALEIGH, NC 27606  
919-747-6020

**CONSTRUCTION DRAWINGS**  
**GRACE Christian**  
**School Apex Campus**

**PRELIMINARY NOT APPROVED FOR CONSTRUCTION**

0 20 40  
SCALE: 1 inch = 40 ft.

INITIAL PLAN DATE: 03/03/2025  
REVISIONS:  
04/28/2025 ADDENDUM 01  
07/03/2025 SUBMITTAL NO. 1  
08/08/2025 SUBMITTAL NO. 2  
09/05/2025 SUBMITTAL NO. 10

WR JOB NUMBER  
DRN: WR DGN: WR CKD: WR

**DETAILED UTILITY PLAN**

**C5.01**

**DRAFT ONLY - NOT FOR CONSTRUCTION**

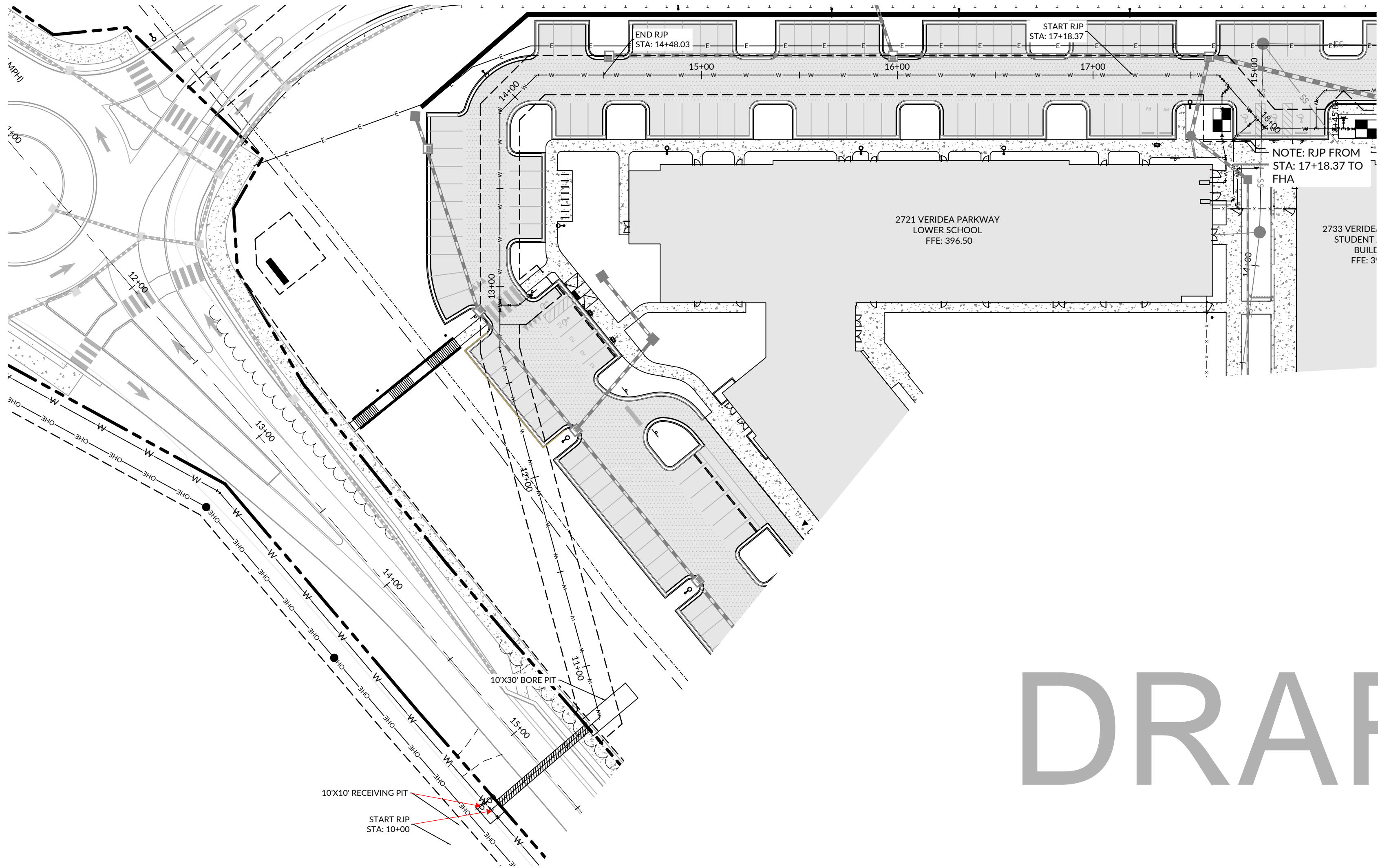




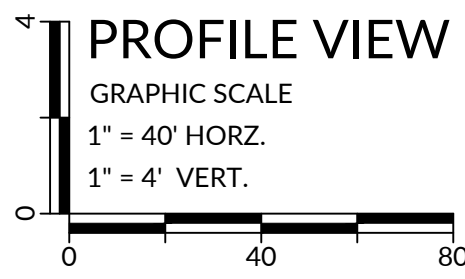
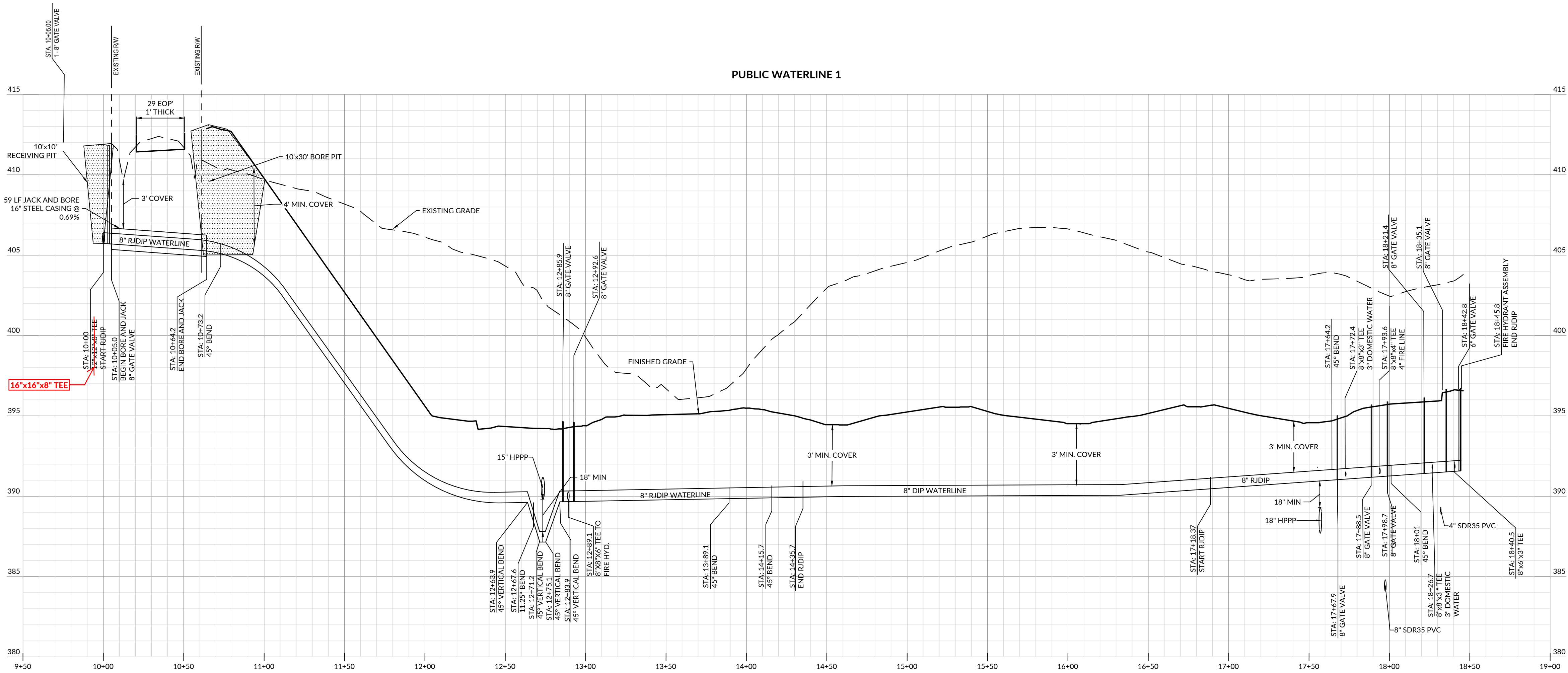








DRAFT



**LITTLE**  
DIVERSIFIED ARCHITECTURAL CONSULTING

The signatures affixed below certify that this sheet has been reviewed and approved solely per the certifications signed on the cover sheet of these Construction Plans.			
Transportation Engineering		Planning	
Building Inspections		Planning – Transportation	
Water Resources – Utility Engineering		Fire	
Water Resources Stormwater and S&EC		Parks, Recreation & Cultural Resources	
Electric			

WR JOB NUMBER: 2721-2733 VERIDEA PKWY WATERLINE  
DRN: CKD: WR

**WATERLINE PLAN & PROFILE**

**C5.08**

**GREATER RALEIGH AREA  
CHRISTIAN EDUCATION INC.**  
1101 BUCK JONES RD. RALEIGH,  
NC 27606  
919-797-2620

**CONSTRUCTION DRAWINGS  
GRACE CHRISTIAN  
SCHOOL APEX CAMPUS**

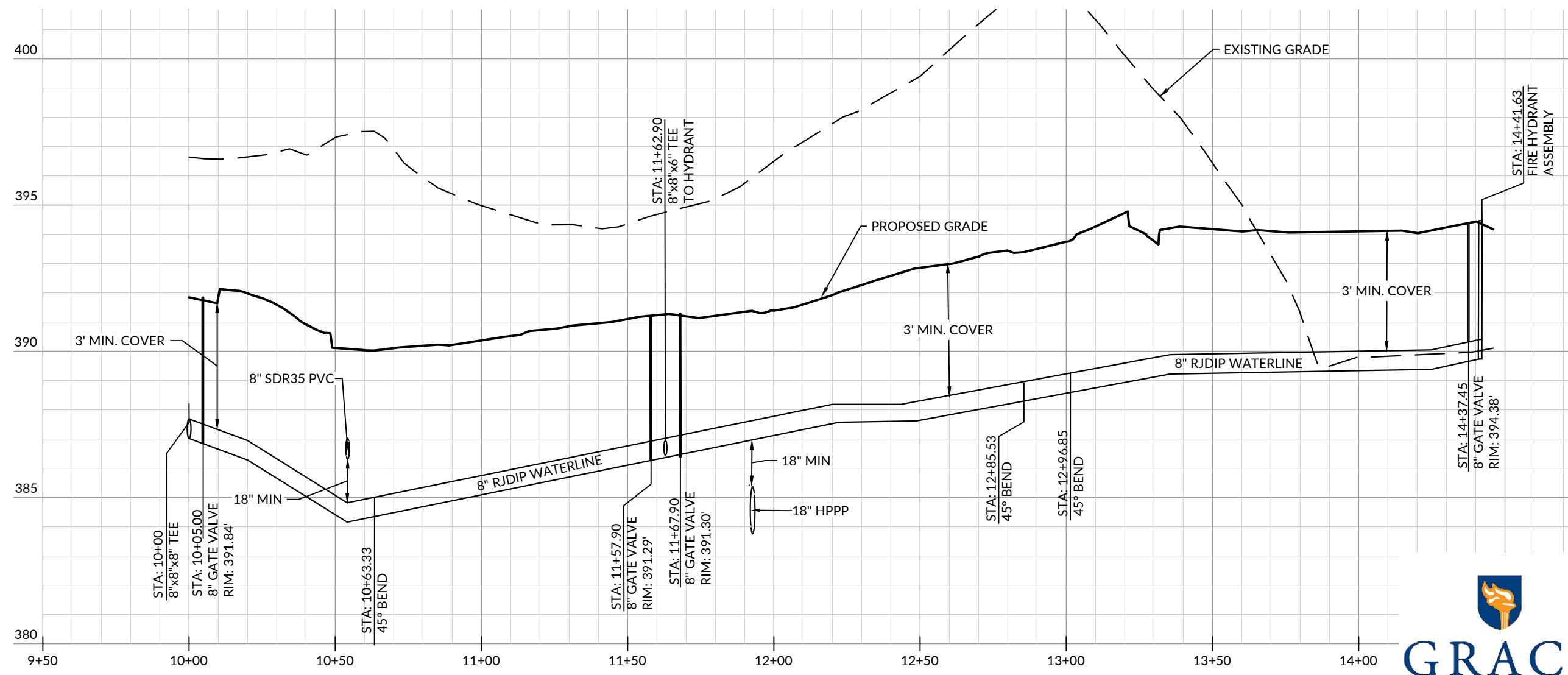
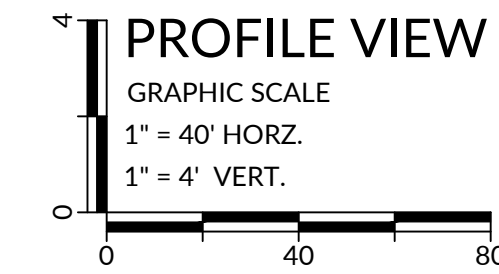
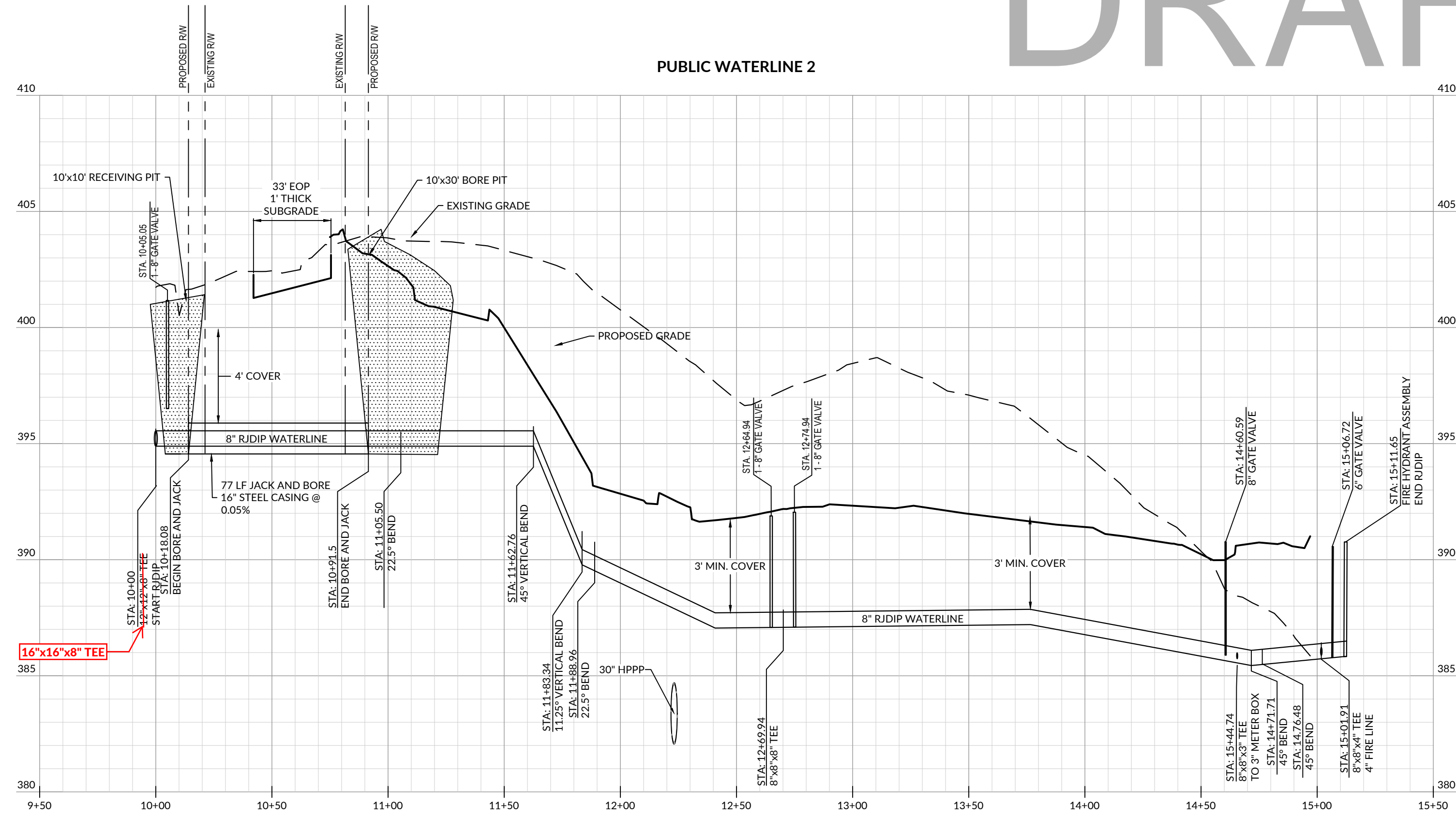
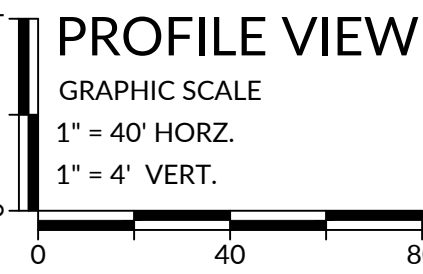


INITIAL PLAN DATE: 03/03/2025  
REVISIONS:  
..... 04/28/2025 ADDENDUM 01  
..... 07/03/2025 SUBMITTAL NO. 2  
..... 08/08/2025 SUBMITTAL NO. 9

**WithersRavenel**  
115 Mecklen Drive | Cary, NC 27511  
License #: F-1479 | t: 919.469.3340 | www.withersravenel.com



J:\2025\279 - Little Architectural Consulting - Christian School Apex Campus Construction\CS09 WATER PLAN & PROFILE.dwg Tuesday, September 2, 2025 8:50:03 AM - ETR/DRS



The signatures affixed below certify that this sheet has been reviewed and approved solely per the certifications signed on the cover sheet of these Construction Plans.	
Transportation Engineering	Planning
Building Inspections	Planning - Transportation
Water Resources - Utility Engineering	Fire
Water Resources Stormwater and S&EC	Parks, Recreation & Cultural Resources
Electric	

WR JOB NUMBER \_\_\_\_\_  
DRN: WR DGN: WR CKD: WR

**WATERLINE PLAN & PROFILE**

**C5.09**

PRELIMINARY  
NOT APPROVED FOR  
CONSTRUCTION

INITIAL PLAN DATE: 03/03/2025  
REVISIONS:  
..... 04/28/2025 ADDENDUM 01  
..... 07/03/2025 SUBMITTAL NO. 1  
..... 08/08/2025 SUBMITTAL NO. 2

CONSTRUCTION DRAWINGS  
**GRACE CHRISTIAN  
SCHOOL APEX CAMPUS**

**GREATER RALEIGH AREA  
CHRISTIAN EDUCATION INC.**  
1101 BUCK JONES RD. RALEIGH,  
NC 27606  
919-797-2020

**WithersRavenel**  
115 Mecklenburg Drive | Cary, NC 27511  
License #: F-1479 | t: 919.469.3340 | www.withersravenel.com

**DRAFT ONLY - NOT FOR CONSTRUCTION**