

# EXHIBIT A

CURVE TABLE				
CURVE	RADIUS	LENGTH	CHORD DIRECTION	CHORD
C15	25.00'	36.58'	N42°31'34"E	33.40'
C40	176.50'	35.65'	N07°26'11"E	35.59'
C41	176.50'	3.21'	N01°07'49"E	3.21'

## LOT 252 INFORMATION:

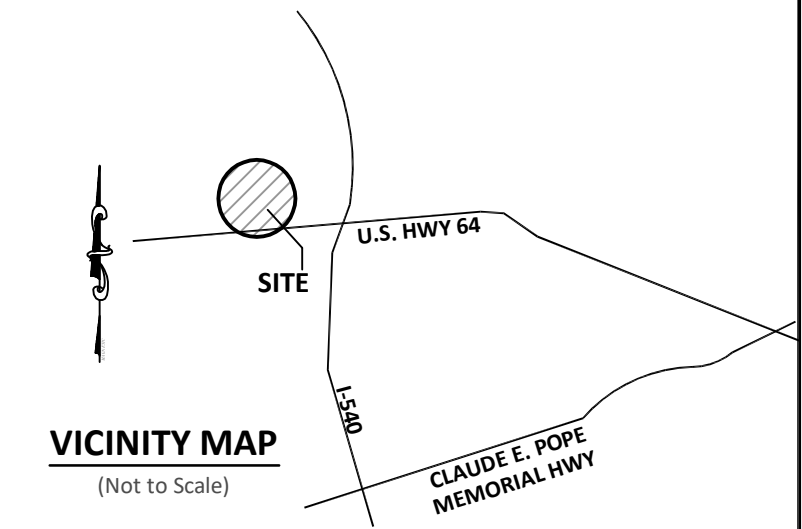
PIN: IN REVIEW  
 ADDRESS: 2505 HUTCH LANE  
 TOTAL LOT AREA = 0.063 AC = 2,730 SF  
 HOUSE = 1,697 SF  
 PORCH = 35 SF  
 SIDEWALK = 84 SF  
 DRIVEWAY = 363 SF  
 STOOP = 9 SF  
 AC PAD = 9 SF  
 TOTAL PROPOSED IMPERVIOUS = 2,197 SF  
 PERCENT IMPERVIOUS = 80.5 %



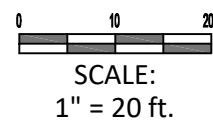
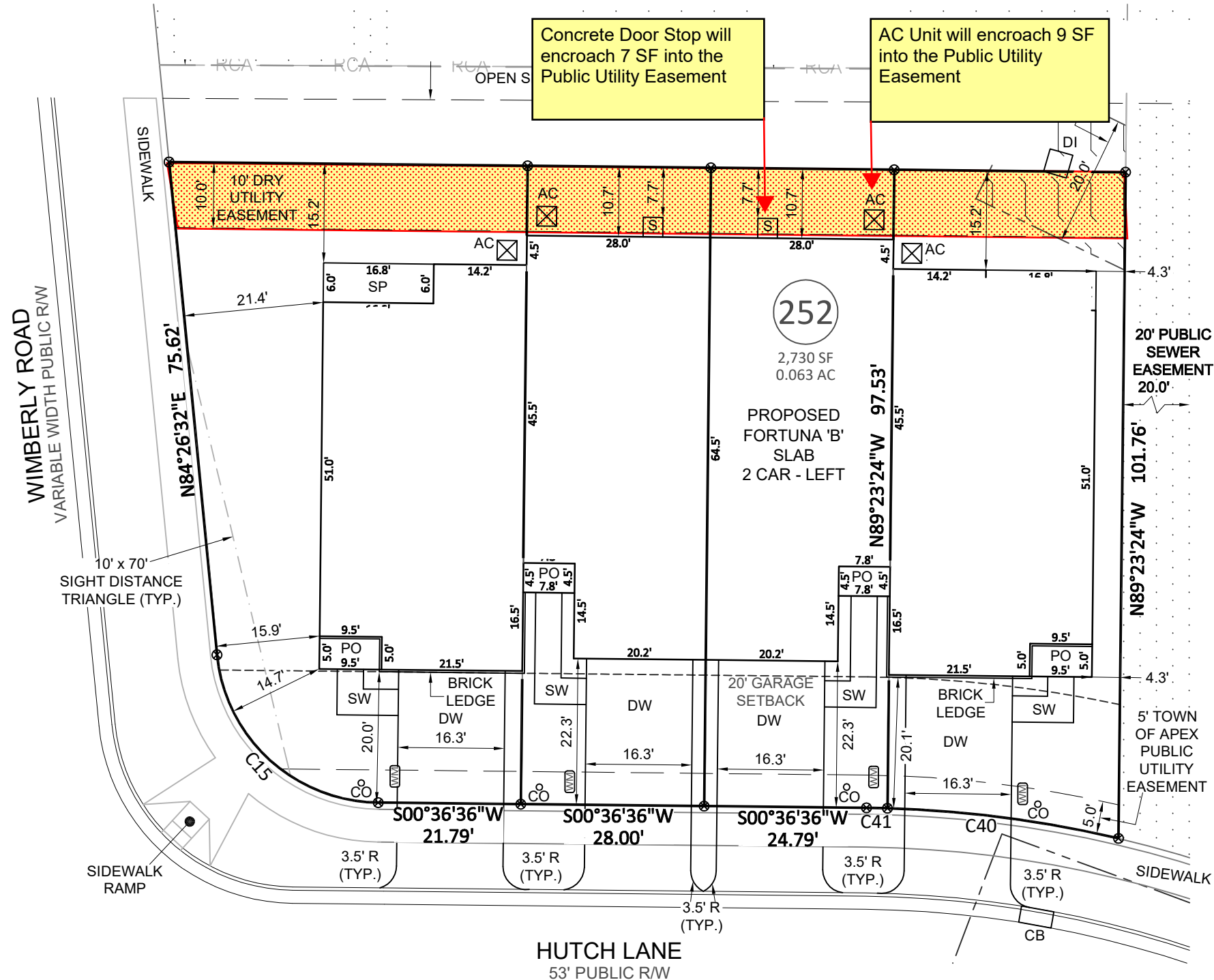
## Bateman Civil Survey Company

Engineers • Surveyors • Planners

2524 Reliance Avenue, Apex, NC 27539 Ph: 919.577.1080 Fax: 919.577.1081  
 www.batemancivilsurvey.com info@batemancivilsurvey.com  
 NCBELS Firm No. C-2378



**NOTE:**  
 THIS MAP MAY NOT BE A CERTIFIED SURVEY AND HAS NOT BEEN REVIEWED BY A LOCAL GOVERNMENT AGENCY FOR COMPLIANCE WITH ANY APPLICABLE LAND DEVELOPMENT REGULATIONS AND HAS NOT BEEN REVIEWED FOR COMPLIANCE WITH RECORDING REQUIREMENTS FOR PLATS.



**TOWNES AT WESTFORD PH. 3B - LOTS 251-254**  
 2501-2507 HUTCH LANE, APEX, NC  
 WHITE OAK TOWNSHIP, WAKE COUNTY

DATE: 9/27/21 DRAWN BY: CPV CHECKED BY: SPC

REFERENCE: BM 2021, PG. 1565-1569 BCS# 190363 SCALE: 1" = 20'