

VICINITY MAP

(Not to Scale)



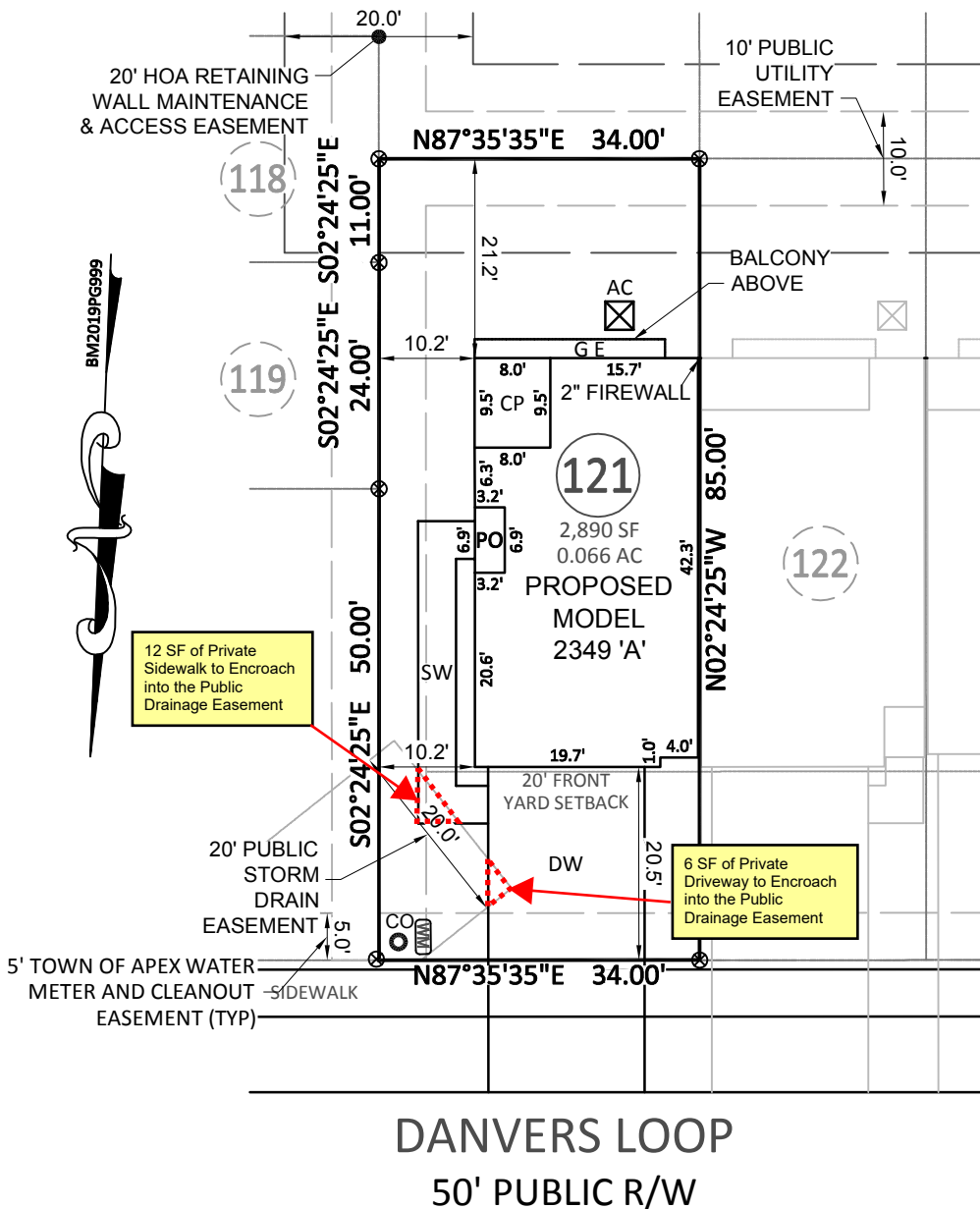
SCALE:
1" = 20 ft.

LOT INFORMATION:

PIN: 0742688290
 TOTAL LOT AREA = 0.066 AC = 2,890 SF
 HOUSE = 924 SF
 PORCH = 22 SF
 SIDEWALK = 150 SF
 DRIVEWAY = 340 SF
 COVERED PORCH = 76 SF
 AC PAD = 9 SF
 PROPOSED IMPERVIOUS = 1,521 SF
 PERCENT IMPERVIOUS = 52.6 %

LEGEND

- PO = PORCH
- S = CONCRETE STOOP
- SW = SIDEWALK
- DW = CONC DRIVEWAY
- SP = SCREENED PORCH
- CP = COVERED PORCH
- P = CONCRETE PATIO
- ⊗ = COMPUTED POINT
- ⊙ = IRON PIPE FOUND (EIP)
- ⊙ = IRON PIPE SET (IPS)
- = DRILL HOLE FOUND
- WM = WATER METER
- CO = CLEAN OUT
- AC = AIR CONDITIONER
- ⊙ = CABLE BOX
- ⊙ = SEWER MANOLE
- ⊙ = TS HANDHOLE
- ⊙ = TELEPHONE PEDESTAL
- CB = CATCH BASIN
- ⊙ = LIGHT POLE
- G = GAS METER
- E = ELECTRIC METER
- ⊙ = FIRE HYDRANT (FH)
- YI = YARD INLET
- ⊙ = WATER VALVE (WV)
- ⊙ = ELECTRIC BOX
- ⊙ = GAS VALVE
- FP = FIREPLACE
- ST = STORAGE
- ⊙ = WATER VALVE



NOTE:
 THIS MAP MAY NOT BE A CERTIFIED SURVEY AND HAS NOT BEEN REVIEWED BY A LOCAL GOVERNMENT AGENCY FOR COMPLIANCE WITH ANY APPLICABLE LAND DEVELOPMENT REGULATIONS AND HAS NOT BEEN REVIEWED FOR COMPLIANCE WITH RECORDING REQUIREMENTS FOR PLATS.

PRELIMINARY PLOT PLAN
 EXCLUSIVELY FOR: TRI POINT HOMES
TOWNES AT NORTH SALEM, PHASE 2A - LOT 121
 1061 DANVERS LOOP, APEX, NC
 WHITE OAK TOWNSHIP, WAKE COUNTY
DATE: 3/11/21 DRAWN BY: MJA CHECKED BY: SPC