



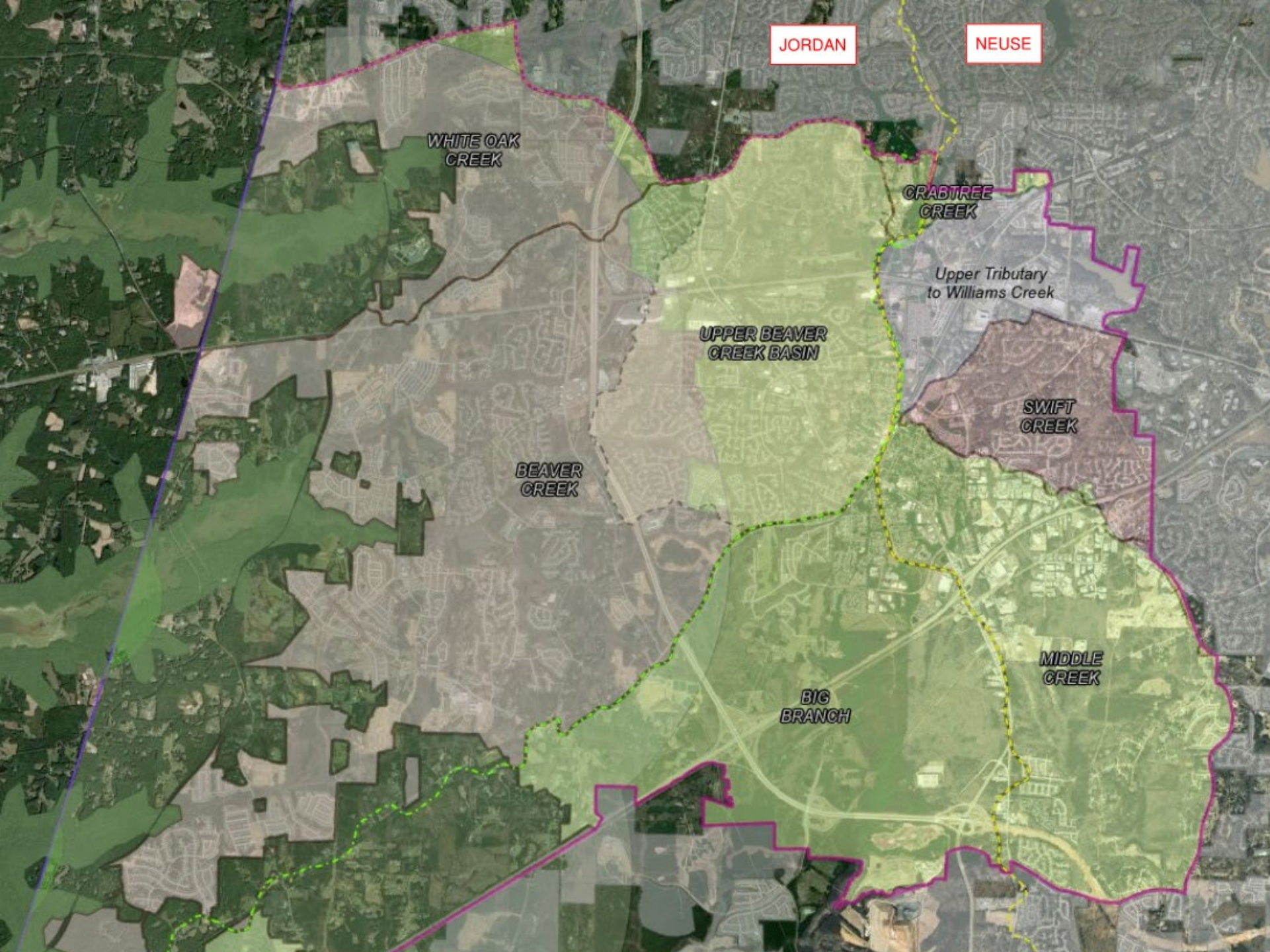
6.1 & 12.2 UDO Amendments

PB 4/8/24 & TC 4/23/24

Proposed Changes

- Section 6.1 – *Watershed Protection Overlay Districts*
 - Add Neuse River Basin Nutrient Management
 - Update Riparian Buffer Mitigation
- Section 12.2 – *Terms Defined*
 - Update Built-Upon Area (BUA) definition

UDO	Revision	State Regulation
6.1	Neuse Rules	15A NCAC 02B .0711
6.1	Buffer Mitigation	15A NCAC 02B .0295
12.2	BUA Definition	NCGS 143-214.7



Neuse Nutrient Management for Developments

- Nitrogen stormwater loading rate limit: ≤ 3.6 lbs/ac/yr*
- Land disturbance thresholds for stormwater requirements:

Development Type	Current	Min. Required per Regulation		Proposed	
	Town-wide	Neuse	Jordan/Cape Fear	Neuse	Jordan/Cape Fear
Single Family / Duplex	1 ac.	1 ac.	1 ac.	1 ac.	1 ac.
Commercial, Multifamily, etc.	1 ac.	0.5 ac.	1 ac.	0.5 ac.	0.5 ac.

*Currently no nutrient requirements within the Jordan/Cape Fear basin

Buffer Mitigation

- Revised mitigation calculation
 - Proximity, type, width
- Expanded mitigation options
 - Restore/enhance subject streams
 - Donate property
 - Buy mitigation bank credits
 - **New options** [6.1.15.H]
 - Preservation, restore/enhance non-subject streams/ditches, Enhanced SCM design/size
 - requires DEQ approval

Neuse Implementation

- Regulatory deadline
 - No later than July 1, 2024
- Proposed
 - Projects with 1st site plan submitted on or after July 1, 2024