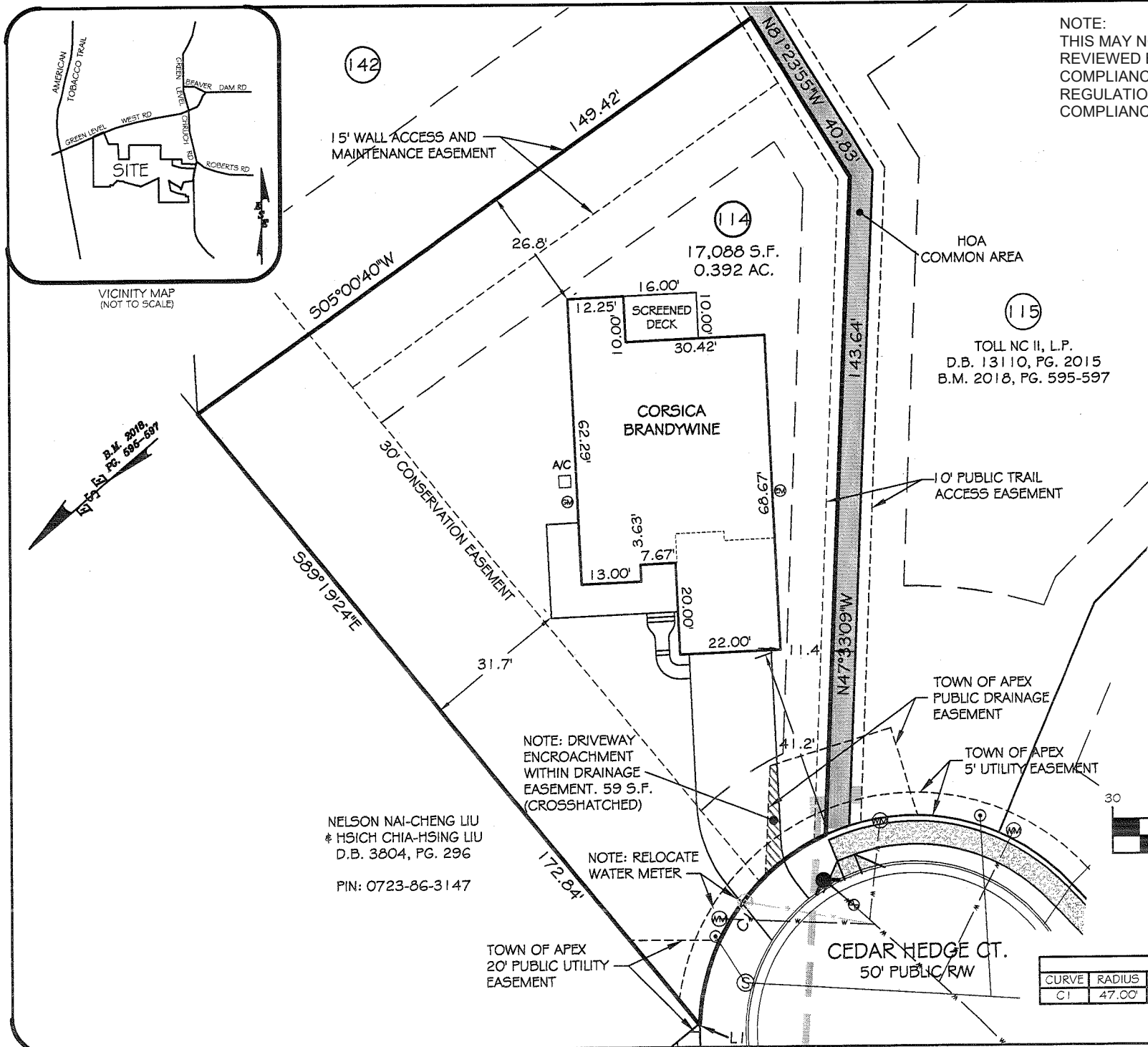
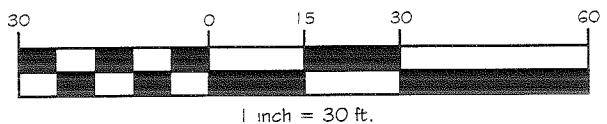


EXHIBIT A

NOTE:
THIS MAY NOT BE A CERTIFIED SURVEY AND HAS NOT BEEN REVIEWED BY A LOCAL GOVERNMENT AGENCY FOR COMPLIANCE WITH ANY APPLICABLE LAND DEVELOPMENT REGULATIONS AND HAS NOT BEEN REVIEWED FOR COMPLIANCE WITH RECORDING REQUIREMENTS FOR PLATS.



NOTE:
1) LOCATION OF UTILITY SERVICES SHOWN ARE CONCEPTUAL ONLY. ACTUAL LOCATION OF SANITARY, WATER, ELECTRIC, GAS, ETC. SERVICING EACH LOT TO BE DETERMINED AT TIME OF CONSTRUCTION BY DEVELOPER.
2) HOUSE FOUNDATION NOTE: ALL PLOT PLAN DIMENSIONS SHOULD BE CHECKED AGAINST TOLL ARCHITECTURE PLANS BY PM OR CM PRIOR TO CONSTRUCTION.
3) ALL PLANIMETRICS WERE TAKEN FROM A PLAN BY CHAS. H. SELLS, INC. TITLED "BECKWITH PROPERTY GREEN LEVEL CHURCH ROAD. DATED: 03-07-2007."



| LINE TABLE | | |
|------------|-------------|----------|
| LINE | BEARING | DISTANCE |
| L1 | S42°17'03"W | 0.24' |

| CURVE TABLE | | | | | |
|-------------|--------|------------|--------------|---------------|-------------|
| CURVE | RADIUS | ARC LENGTH | CHORD LENGTH | CHORD BEARING | DELTA ANGLE |
| C1 | 47.00' | 52.20' | 49.56' | N15°53'48"W | 63°38'18" |

NELSON NAI-CHENG LIU
& HSICH CHIA-HSING LIU
D.B. 3804, PG. 296
PIN: 0723-86-3147

ESE CONSULTANTS
ENGINEERING • PLANNING • SURVEYING • ENVIRONMENTAL

LICENSE # C-2973
ESE of North Carolina, PC
2310 T.W. Alexander Dr., Suite J
Raleigh, NC 27617
TEL: 919-321-4800 FAX: 919-321-7880

PLOT PLAN FOR
REGENCY AT WHITE OAK CREEK - PHASE 6
LOT 114 - 2501 CEDAR HEDGE COURT
TOWN OF APEX, WAKE COUNTY, N.C.
TOLL NC II, L.P.
D.B. 13110, PG. 2015

JOB #: 2324.L0114
DATE: 02-26-19
SCALE: 1" = 30'
DRAWN BY: CEW
REVIEWED BY: TF
REVISIONS:
REVISED BY: