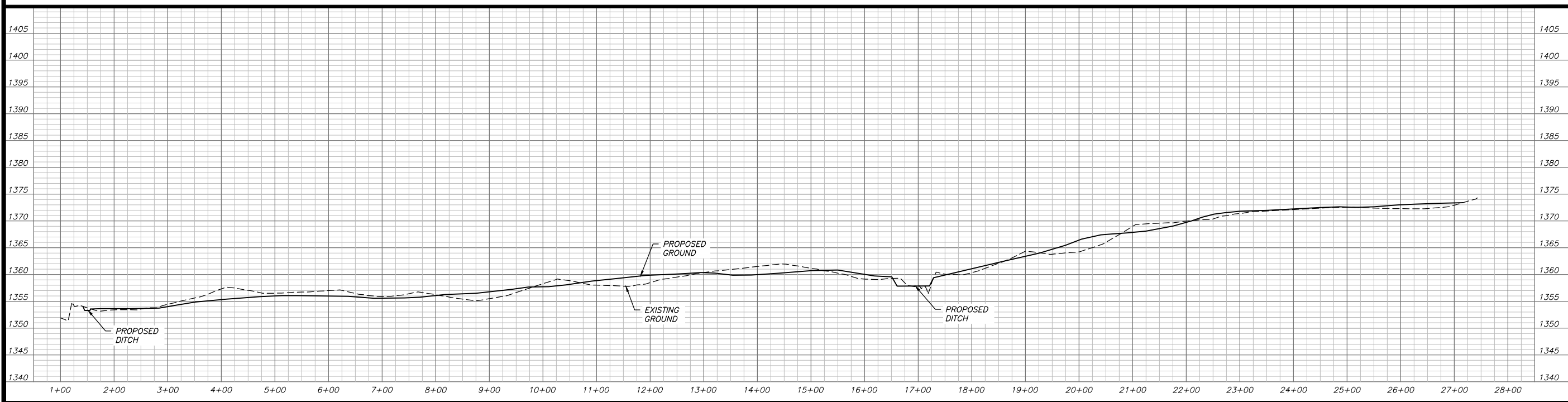


14,140 C.Y. OF COMMON EXCAVATION FOR PRELIMINARY SITE GRADING



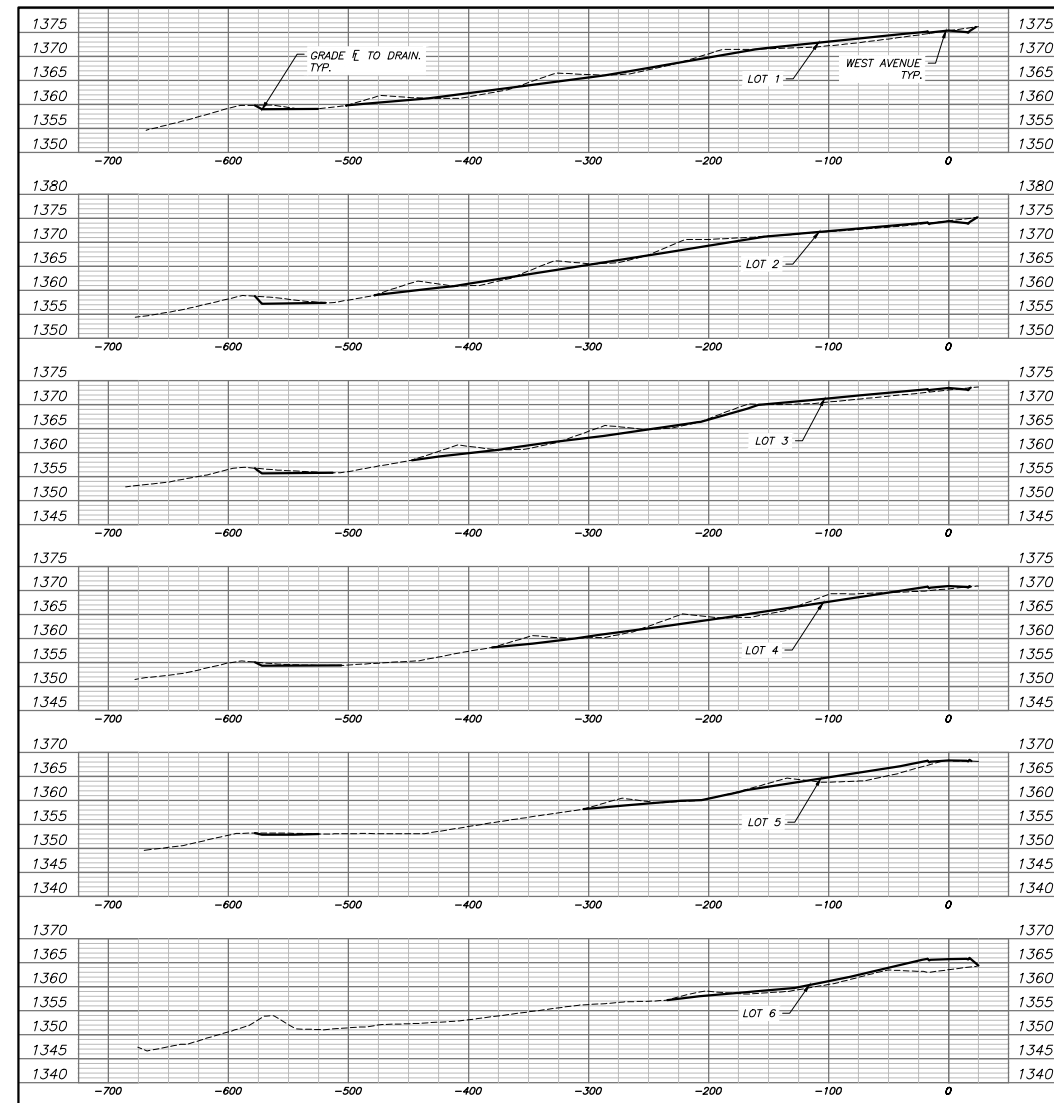
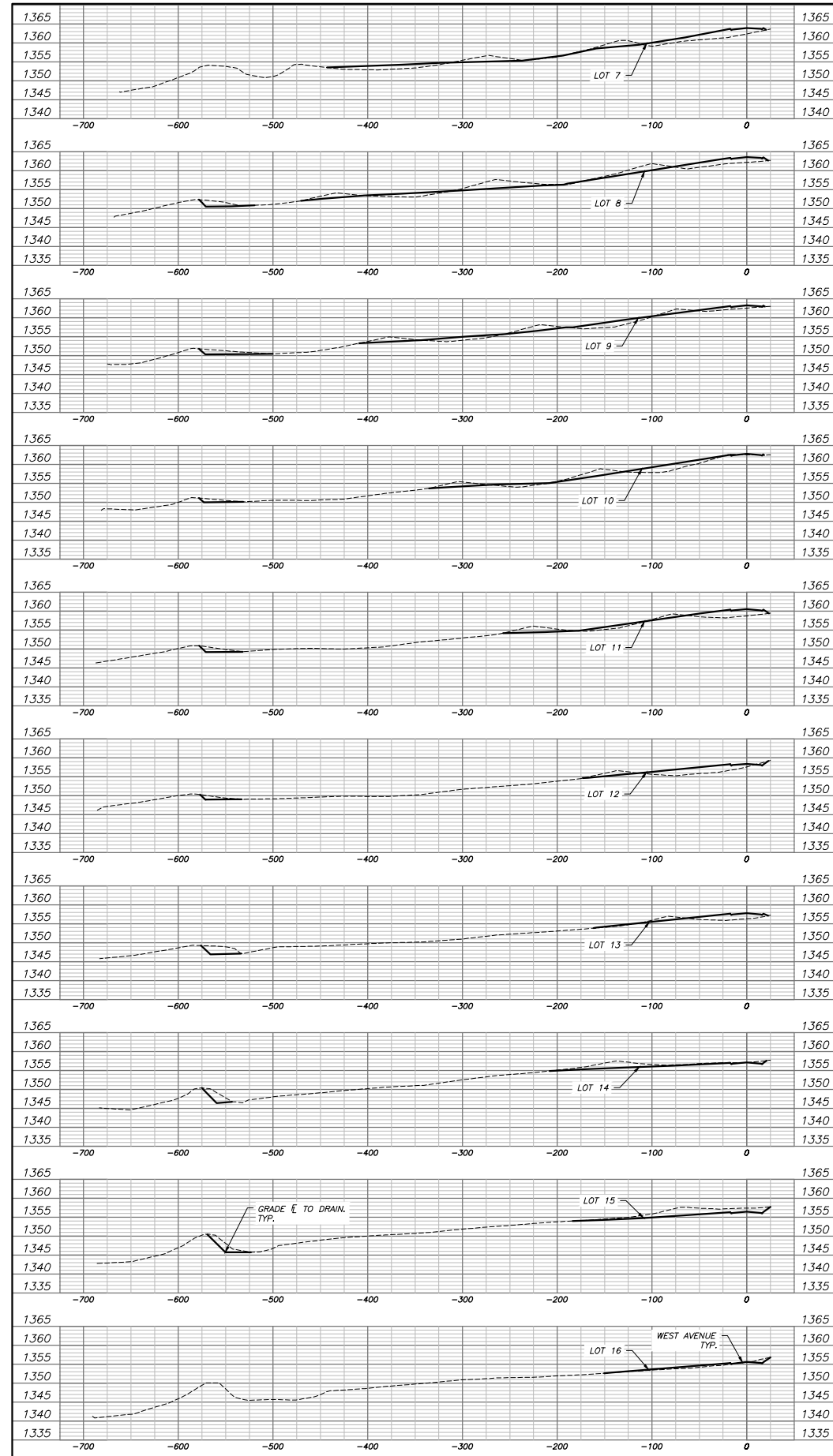
**HARPER COUNTY  
GROWTH INITIATIVE**  
HARPER COUNTY, KANSAS  
2022 BASE GRANT PROJECT

Date	Description

Project #R4273.1 & R4274.1  
© COPYRIGHT  
Evans-Bierly-Hutchison  
& Associates, P.A., 2023.

Title:  
**SUNRISE GRADING PLAN**

Sheet:  
**C-101**



**HARPER COUNTY  
GROWTH INITIATIVE**  
HARPER COUNTY, KANSAS  
2022 BASE GRANT PROJECT

Date	Description

Project #R4273.1 & R4274.1  
©COPYRIGHT  
Evans-Bierly-Hutchison  
& Associates, P.A., 2023.  
Title:  
**SUNRISE GRADING  
CROSS SECTIONS**