

CHANGE ORDER

CHANGE ORDER NO. 2 - FINAL

Date: January 18, 2022

Project: Anthony Municipal Airport – Demolition & Site Clearing Runway 36 RPZ

Effective Date of *Agreement*: May 26, 2021

Contractor: DLS Enterprises, LLC.

Owner hereby orders and authorizes the following changes in the Work:

- Adjustment to Final As-Constructed Quantities – Increase in seeding acreage from 1 acre to 2 acres to cover disturbed area. Contractor was required to seed all disturbed area. Area increased due to need to grade all demolition sites to appropriately drain. \$7,500 increase using original bid price of seeding per acre. Additional 5 days for acquiring extra seed.

CHANGE IN CONTRACT PRICE:

Original Contract Price (as of Effective Date of *Agreement*): \$ 74,500.00

Old Contract Price (as adjusted by previous *Change Orders*): \$ 77,975.00

NET (**increase**) (~~decrease~~) due to this *Change Order*: \$ 7,500.00

New Contract Price (as adjusted by this *Change Order*): \$ 85,475.00

CHANGE IN CONTRACT TIME:

Original Working Days (as given in *Contract Agreement*): 45 calendar days

Old completion Working Days (as adjusted by previous *Change Orders*): 55 calendar days

NET (**increase**) (~~decrease~~) due to this *Change Order*: 5 calendar days

New completion Working Days (as adjusted by this *Change Order*): 60 calendar days

ORDERED BY: Anthony, Kansas

Owner

By: _____

(typed/printed)

(title)

Attest: _____

(title)

ACCEPTED BY: DLS Enterprises, LLC

Contractor

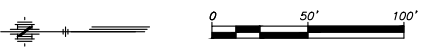
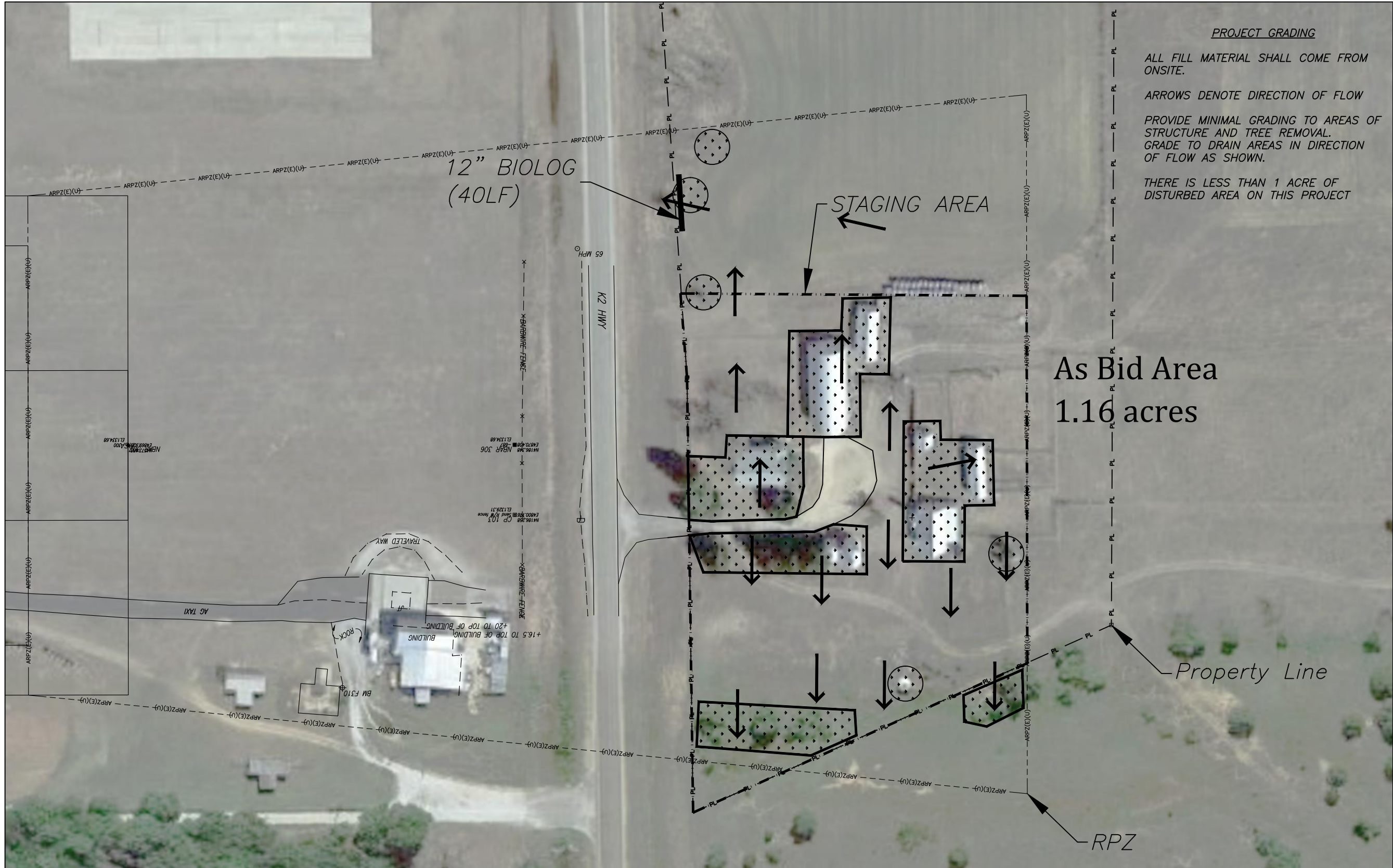
By: _____

(typed/printed)

(title)

REVIEWED BY: 

EVANS, BIERLY, HUTCHISON & ASSOCIATES, P.A.



PROJECT GRADING

ALL FILL MATERIAL SHALL COME FROM ONSITE.

ARROWS DENOTE DIRECTION OF FLOW

PROVIDE MINIMAL GRADING TO AREAS OF STRUCTURE AND TREE REMOVAL. GRADE TO DRAIN AREAS IN DIRECTION OF FLOW AS SHOWN.

THERE IS LESS THAN 1 ACRE OF DISTURBED AREA ON THIS PROJECT

As Bid Area
1.16 acres

Property Line

RPZ

ENGINEER WILL EVALUATE THE REMOVAL OF ROOT BALL OF EACH TREE AFTER THE UTILITIES ARE MARKED. IF ANY UTILITY RUNS THROUGH THE ROOT BALL OF A TREE, THAT ROOT BALL SHALL NOT BE REMAINED AND TREE SHALL BE REMOVE TO THE SURFACE OF THE GROUND.



**ANTHONY AIRPORT
DEMOLITION & SITE CLEARING
RUNWAY 36 RPZ
AIP#3-20-0002-012**
ANTHONY, KANSAS

Date ##/##/##	Description Revision Description

Project #R3703.1
© COPYRIGHT
Evans-Bierly-Hutchison
& Associates, P.A., 2021.
Title:
GRADING &
DRAINAGE

Sheet:
CR-102

