



Hydroverse Water Meter

Electromagnetic Flow Measurement System for Commercial and Industrial Applications

Sensus Hydroverse™ water meters deliver industry-leading accuracy, flow range and low-flow sensitivity for commercial and industrial potable, reclaimed and raw water applications. Using proven electromagnetic metering technology, the Hydroverse meter is ideally suited to capture revenue from large commercial accounts, enable district/zone metering and measure export or raw water flow. Benefit from the ease of programming, flexible communication, data storage, power supply options, configurable alarms and minimal head loss provided by this smart commercial water meter.

BENEFITS

- Wide flow range for greater application flexibility
- Superior low-flow accuracy, even for raw water
- No moving parts minimizes wear and prolongs meter life
- Ease of programming with user-friendly mobile application
- AMI/AMR capable
- Minimal head loss ensures consistent accuracy
- 10-year battery life
- Internal verification for enhanced meter accuracy assurance

Industry Leading Performance

The Hydroverse water meter offers accuracy of ± 0.4 percent or optional ± 0.2 percent over a wide flow range. The internal verification algorithm runs automatically, maintaining accuracy over the life of the meter. Hydroverse Manager Software, the intuitive mobile app available for Android™* devices, offers easy programmability to ensure meter configuration for optimal performance.

Solid State Magnetic Technology

The Hydroverse meter uses industry-proven electromagnetic technology that provides superior accuracy for a wider range of flow conditions than most metering technologies available today. With no moving parts, the Hydroverse meter will not suffer accuracy drift due to wear common to other metering technologies. This reduces total cost of ownership through less frequent meter testing and repairs.

Alarms

The Hydroverse features optional, configurable alarms for low flow, high flow, power supply and system measurement.



Hydroverse Water Meter

Electromagnetic Flow Measurement System for Commercial and Industrial Applications

Construction

The Hydroverse meter consists of a measuring tube and a liner. The measuring tube is made of steel with corrosion-resistant coating. The hard rubber (non-magnetic) liner is resistant to corrosion, aging and abrasion. The Hydroverse meter is IP68 rated to 6 feet.

Electronic Register

The Hydroverse electronic register is available in integral or remote designs with remote register placement up to 330 feet (100m) away from the meter. The easy-to-read LCD can be configured to display forward, reverse and total consumption, direction of flow, flow rate and alarms. Register output options include Sensus communication

protocol and configurable pulse output. The register is IP68 rated to a depth of 6 feet.

AMI / AMR Compatibility

Sensus Hydroverse meters are compatible with common AMI / AMR systems, including the Sensus FlexNet® communication network.

Conformance to Standards

The Hydroverse is NSF Standard 61 compliant. Flanges are ASME B16.5 Standard and Class CL150.

Dimensions and Weights

Meter and Pipe Size	Low Flow Limit (±1.5% accuracy)		Normal Operating Range (±0.4% or optional ±0.2% accuracy)		Max Intermittent Flow		Flange Outer Diameter (D)	Number of Holes (N)	Bolt Hole Diameter (Y)	Sensor Length (L)	Register Height (F)	Approximate Weight
1-1/2" DN40	0.28 GPM 0.06 m ³ /hr		0.44 - 150 GPM 0.10 - 34 m ³ /hr		188 GPM 43 m ³ /hr		5.9 in 150 mm	4	5/8 in 15.7 mm	7.9 in 200 mm	6.2 in 158 mm	29 lb 13 kg
2" DN50	0.44 GPM 0.10 m ³ /hr		0.70 - 220 GPM 0.16 - 50 m ³ /hr		275 GPM 62 m ³ /hr		6.5 in 165 mm	4	3/4 in 19 mm	7.9 in 200 mm	6.4 in 162 mm	33 lb 15 kg
3" DN80	1.1 GPM 0.25 m ³ /hr		1.8 - 510 GPM 0.40 - 116 m ³ /hr		638 GPM 145 m ³ /hr		7.9 in 200 mm	4	3/4 in 19 mm	7.9 in 200 mm	7.1 in 181 mm	46 lb 21 kg
4" DN100	1.8 GPM 0.4 m ³ /hr		2.8 - 920 GPM 0.64 - 209 m ³ /hr		1,150 GPM 261 m ³ /hr		9.3 in 235 mm	8	3/4 in 19 mm	9.8 in 250 mm	8.0 in 202 mm	59 lb 27 kg
6" DN150	4 GPM 1 m ³ /hr		7 - 2,800 GPM 1.6 - 636 m ³ /hr		3,500 GPM 795 m ³ /hr		11.8 in 300 mm	8	7/8 in 22 mm	11.8 in 300 mm	9.2 in 233 mm	77 lb 35 kg
8" DN200	7 GPM 1.6 m ³ /hr		11 - 3,700 GPM 2.5 - 840 m ³ /hr		4,625 GPM 1,050 m ³ /hr		13.5 in 343 mm	8	7/8 in 22 mm	13.8 in 350 mm	10.2 in 259 mm	150 lb 68 kg
10" DN250	28 GPM 6.4 m ³ /hr		45 - 7,045 GPM 10 - 1,600 m ³ /hr		8,807 GPM 2,000 m ³ /hr		15.9 in 405 mm	12	1 in 26 mm	17.7 in 450 mm	12.6 in 319 mm	154 lb 70 kg
12" DN300	44 GPM 10 m ³ /hr		70 - 11,008 GPM 16 - 2,500 m ³ /hr		13,760 GPM 3,125 m ³ /hr		19.1 in 485 mm	12	1 in 26 mm	19.7 in 500 mm	13.5 in 342 mm	231 lb 105 kg
14" DN350	70 GPM 16 m ³ /hr		113 - 17,613 GPM 26 - 4,000 m ³ /hr		22,017 GPM 5,000 m ³ /hr		21.1 in 535 mm	12	1 1/8 in 29 mm	21.7 in 550 mm	14.1 in 357 mm	302 lb 137 kg
16" DN400	92 GPM 21 m ³ /hr		148 - 22,897 GPM 34 - 5,200 m ³ /hr		28,622 GPM 6,500 m ³ /hr		23.6 in 600 mm	12	1 1/8 in 29 mm	23.6 in 600 mm	15.7 in 399 mm	385 lb 175 kg
18" DN450	111 GPM 25 m ³ /hr		178 - 27,741 GPM 40 - 6,300 m ³ /hr		34,676 GPM 7,875 m ³ /hr		25.0 in 635 mm	16	1 1/4 in 32 mm	23.6 in 600 mm	16.0 in 407 mm	550 lb 250 kg
20" DN500	137 GPM 31 m ³ /hr		218 - 33,906 GPM 50 - 7,700 m ³ /hr		42,382 GPM 9,625 m ³ /hr		27.6 in 700 mm	20	1 1/4 in 32 mm	23.6 in 600 mm	16.0 in 407 mm	660 lb 300 kg
24" DN600	176 GPM 40 m ³ /hr		282 - 44,033 GPM 64 - 10,000 m ³ /hr		55,042 GPM 12,500 m ³ /hr		32.1 in 815 mm	20	1 3/8 in 35 mm	31.5 in 800 mm	18.0 in 458 mm	935 lb 425 kg

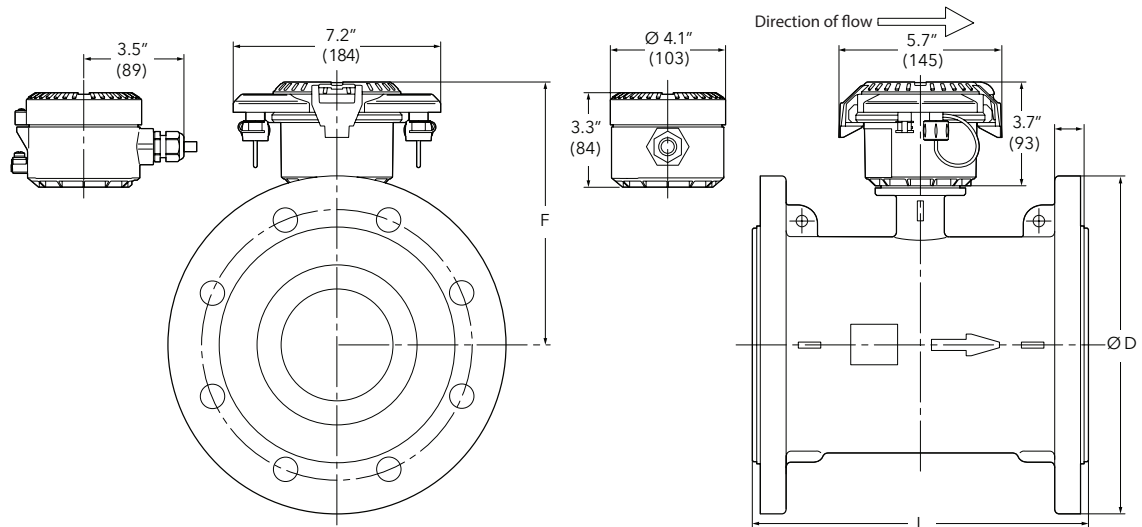
Larger sizes are available. Ask your Sensus representative for details.



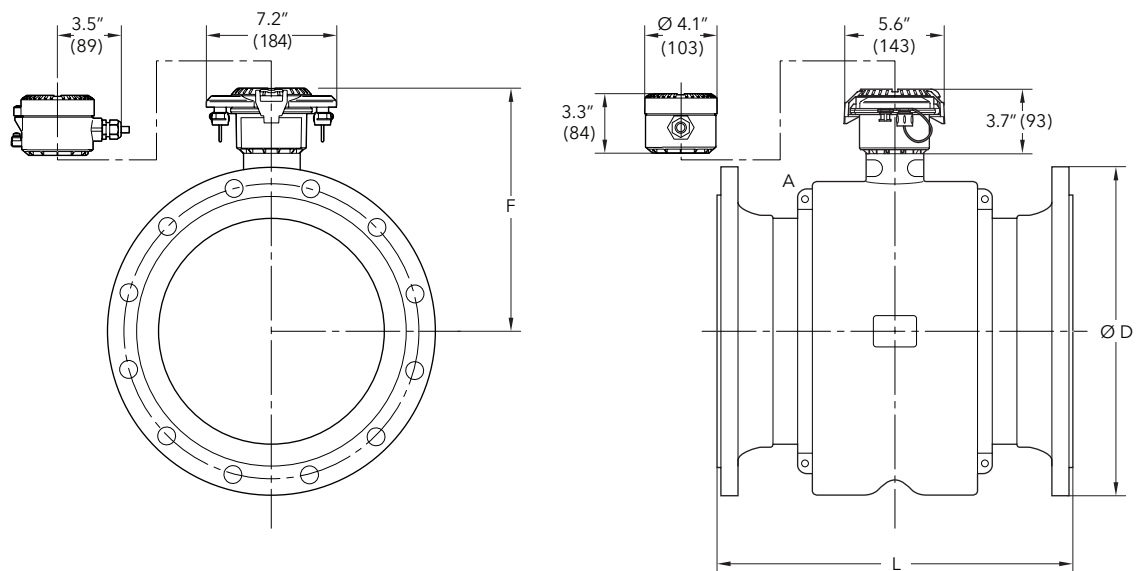
Hydroverse Water Meter

Electromagnetic Flow Measurement System for Commercial and Industrial Applications

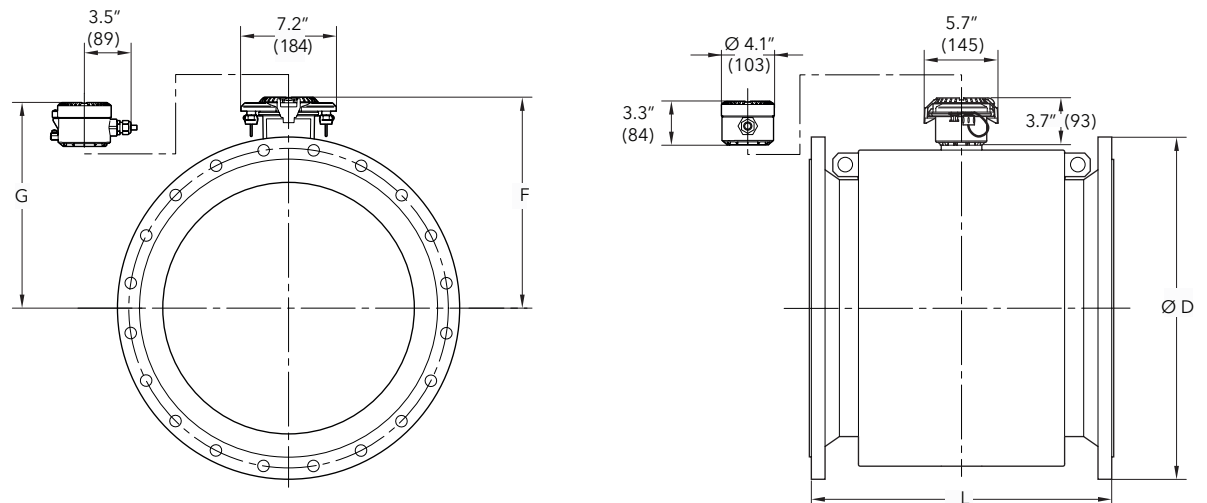
Hydroverse:
1½" - 8"



Hydroverse:
10" - 16"



Hydroverse:
18" - 24"





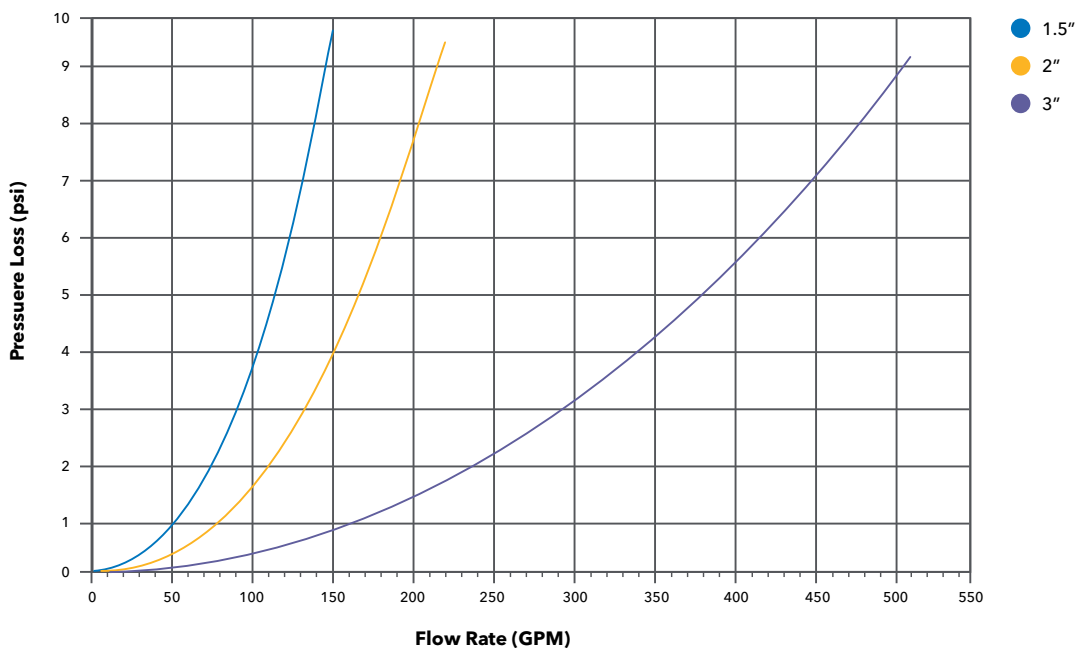
Hydroverse Water Meter

Electromagnetic Flow Measurement System for Commercial and Industrial Applications

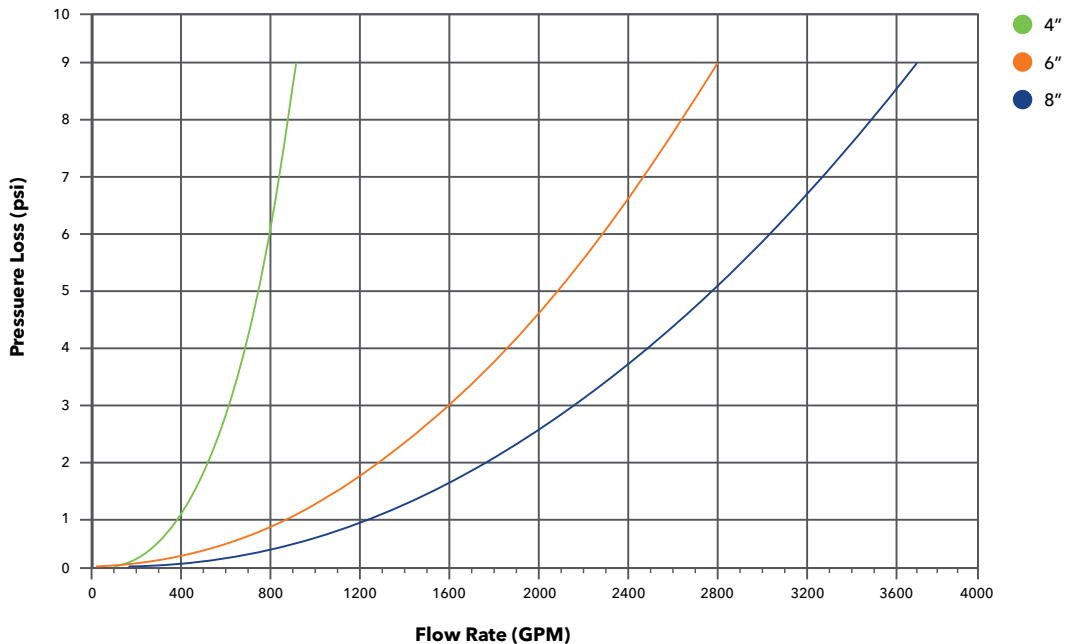
Head Loss Curves

Head loss curves are applicable to 1.5" to 8" reduced bore meters. 10" and larger meters are full bore and exhibit negligible head loss across the meter.

Meter Head Loss (psi) vs. Flow Rate (GPM)



Meter Head Loss (psi) vs. Flow Rate (GPM)



8601 Six Forks Rd, Ste 700
Raleigh, NC 27615
1-800-638-3748
sensus.com

*Android is a trademark of Google LLC.

©2018 Sensus. All products purchased and services performed are subject to Sensus' terms of sale, available at either sensus.com/TC or 1-800-638-3748. Sensus reserves the right to modify these terms and conditions in its own discretion without notice to the customer. The Sensus logo is a registered trademark of Sensus.

This document is for informational purposes only, and SENSUS MAKES NO EXPRESS WARRANTIES IN THIS DOCUMENT. FURTHERMORE, THERE ARE NO IMPLIED WARRANTIES, INCLUDING WITHOUT LIMITATION, WARRANTIES AS TO FITNESS FOR A PARTICULAR PURPOSE AND MERCHANTABILITY. ANY USE OF THE PRODUCTS THAT IS NOT SPECIFICALLY PERMITTED HEREIN IS PROHIBITED.