



# CITY OF ANTHONY

ECONOMIC DEVELOPMENT INVENTORY



strategic  
location



retail &  
recreation



infrastructure  
invested

**Contact Us**



620.842.5434



[www.anthonykansas.org/welcomehome](http://www.anthonykansas.org/welcomehome)

# ABOUT ANTHONY



That City of Anthony began as a dream in the minds of 13 adventurous and industrious individuals and became a reality in July 1878.

History books will document the legacy of Anthony, built on the foundation of:

- Hardworking people that took chances to build the economy.
- Daring entrepreneurs, regardless of odds, or even perceived success, that helped build a strong base of business and retail.
- A supportive community that values above all: people, kids, families.

*All dreams can come true, if we have the courage to pursue them.*



# Community

fun & friendly

healthy & safe

modern & thriving



Population: 2,104  
Median Household Income: \$35,000  
Median Home Value: \$87,504  
Homeowner Median Age: 45  
Percent of Workforce: 60%

## Demographics

### LOCATION

Anthony is the county seat of Harper County, Kansas. Anthony is located in south central Kansas, twelve miles north of the Oklahoma border, and is approximately 60 miles southwest of Wichita, Kansas and 60 miles northwest of Enid, Oklahoma.

### POPULATION

Anthony: 2209

Harper County: 3594

### HOUSING

Median House Value: \$57,000

Mean House Value: \$87,504

Rentals: 1 bdrm \$300 2 bdrm \$350

3 bdrm \$450

Fully furnished with utilities: \$600-\$900

New Construction Developments Available

### CLIMATE

Average Annual Temperature - 69 degrees

Average January Temperature - 40 degrees

Average July Temperature - 94 degrees

Average Annual Precipitation - 25"

Average Annual Snowfall - 12"

Elevation - 1340 ft.

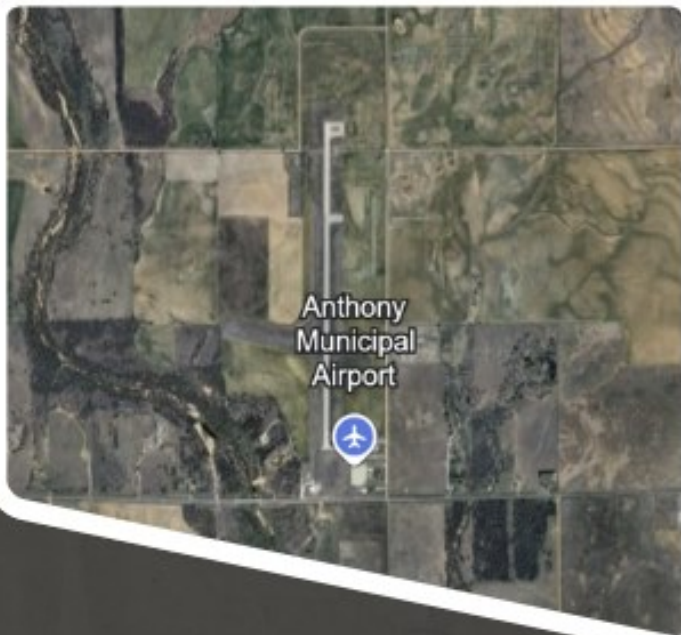
### TRANSPORTATION

Motor Freight:

Arkansas Motor Freight, Price Truck Line, TNT Dugan, Western Kansas Express, Roadway Express, RPS, UPS, Pony Express, Federal Express.

Highways:

K-2, K-44, K-179 serving Anthony. US 160 is 6 miles north of Anthony East-West Interstate I-70 is 118 miles north North-South Interstate I-35 is 43 miles east.



# KANY

## ANTHONY MUNICIPAL AIRPORT

Commercial Opportunities  
Available

- ✓ 5,000 Ft. Runway
- ✓ T-Hangar Rental
- ✓ New AWOS
- ✓ AV Gas + Jet A
- ✓ Historic Beacon

**CONTACT US :**

620.842.5434

[anthonykansas.org/welcomehome](http://anthonykansas.org/welcomehome)







# Infrastructure Improvements

- Rehabilitated and Extended Runway 18/36 Concrete to 5,000 Ft.
- Rehabilitate Runway 10/28 Turf 2,000 Ft.
- Relocated and Demolished
- Obstructions to Clear all RPZ Locations
- Finish Final Replacement of all Taxiways and Apron to Concrete Summer 2025
- Installed Automated Weather Observing System (AWOS) and New Beacon
- Summer 2025 Installing Jet-A Fuel
- 2026 Constructing Additional T-Hangars



Anthony  
Municipal  
Airport



Anthony

# AIRPORT LOCATION

Strategically located as a convenient, yet  
accessible alternative to ICT.

Local Municipal Airport - KANY is located 2 miles west of  
Anthony.

The General Utility Airport has a paved runway of 5,000' x 75'.

FREE courtesy car service available.

Commercial Airport - ICT is a quiet one-hour drive  
located 57 miles northwest of Anthony in Wichita, KS.

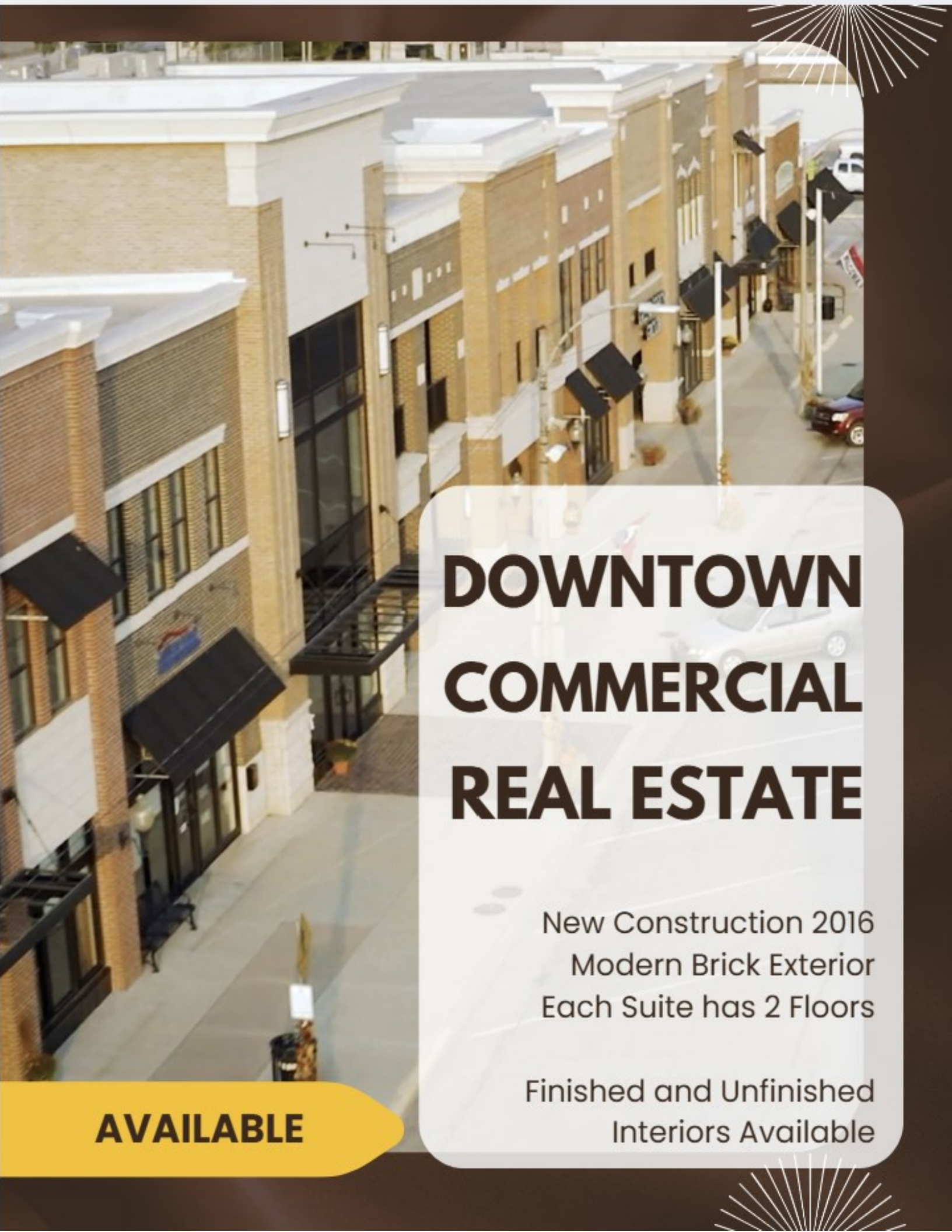




# KANY VISION

- Satellite Pilot School Training Facility
- Drone Training Facility
  - Partner Program with Chaparral High School and City of Harper Post-Secondary Training Facility for Certification Program Completion
- Hangar Home Residential Community





# **DOWNTOWN COMMERCIAL REAL ESTATE**

New Construction 2016  
Modern Brick Exterior  
Each Suite has 2 Floors

Finished and Unfinished  
Interiors Available

**AVAILABLE**



