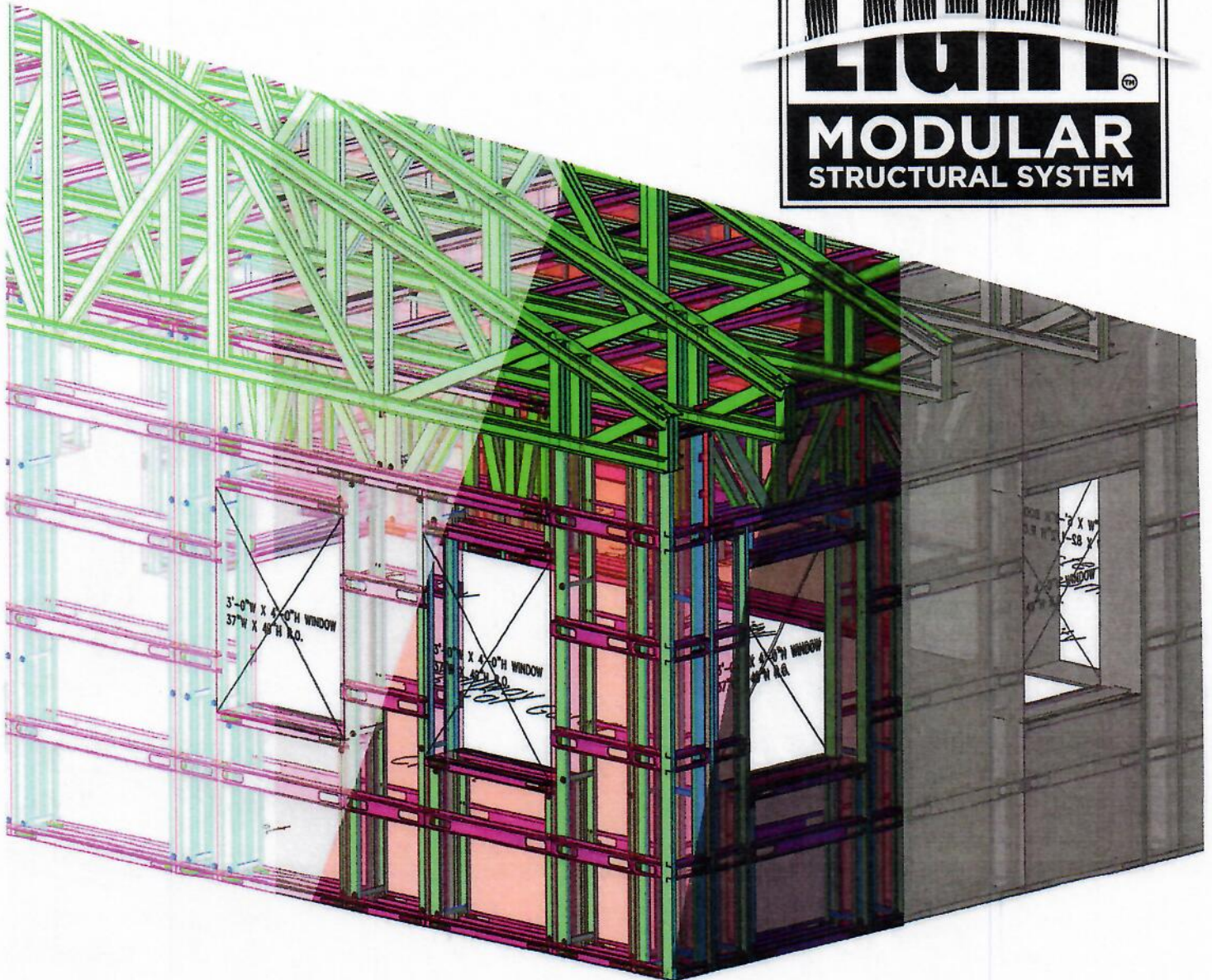


**Introducing a new, locally-manufactured
innovative building solution designed for
Alaskan conditions --- The ArcticLight
Modular Structural System™**



ArcticLight MSS™ is:

- * Innovative**
- * Efficient**
- * Affordable**
- * Resilient**
- * Locally-Manufactured**
- * Available for 2023 construction season**



PanAlaska

Glenn Brady P.E. | Partner
glenn@panalaskallc.com

Mark Sherman P.E. | Partner
mark@panalaskallc.com

Introducing the ArcticLight Modular Structural System manufactured in Fairbanks, Alaska by PanAlaska, LLC

Recognizing the need for affordable, efficient, quality structures in Alaska, two local Fairbanks engineers have developed a new approach to residential and commercial construction – the *ArcticLight Modular Structural System*™.

The *ArcticLight MSS*™ consists of an internal light-gauge steel framework embedded within a matrix of expanded polystyrene (EPS) foam insulation. The 12-inch-thick panelized system delivers a composite insulative value of R-50 and can be assembled on site with simple hand tools and minimal labor effort – a 1200 square foot house structure may be erected in as few as 3 days with only 2 people and no specialized tooling or equipment. The basic *MSS* panel is 4 feet wide by 10 feet tall and weighs only 140 lbs., easily placed and connected with the bolt-together assembly. Floors and trusses are installed with connectors that do not require fasteners. Additional bolt-together in-fill, header and king-stud panels complete the basic structure in a fully customizable layout. With the addition of the *MSS* light-gauge steel roof trusses, a complete structural system can be completed and ready for temporary heat and finishes in a few days.

The advantages of the *ArcticLight MSS*™:

- **Affordable** – The *MSS* system is currently estimated to be 20%-30% less expensive compared to conventional stick-built on-site construction.
- **Labor saving** – No skilled labor required for assembly, and installation time on-site is dramatically minimized.
- **Efficient and Affordable to own** – The R-50 walls will reduce energy consumption and cost over the entire life of the structure.
- **Availability** – No supply chain or delivery issues. The panels are manufactured locally in Fox, Alaska, and the modular system assures availability of the panels in days, as opposed to weeks or months.
- **Constructability** – Can be constructed in inclement weather such as snow or rain with simple gloved-hand operable tools.
- **Weather-proof** – ArcticLight *MSS* panels are fully weather-resistant and may be exposed to rain and snow for extended lengths of time without degradation or risk of rot or mildew.
- **Environmentally friendly** – Can be constructed of recycled materials, and the entire structural framework and insulation can be 100% recycled.
- **Manufactured locally** – The manufacturing facility is located on Fox, Alaska. Customer service and technical assistance is available at the factory and on-site if needed. Local manufacturing further reduces the cost, lead-time and environmental impact by dramatically reducing freight.
- **Flexible and Adaptable** – The ArcticLight *MSS* is easily expandable and can be modified by simply unbolting the panels and reassembling them with additional panel into a new larger configuration.

Additional information about the ArcticLight MSS will be available soon at www.arcticlightmss.com