

# LANDSCAPING PLAN

Utica Park  
Lightner Mine



17 trees total

● Tulip trees (3) - *Liriodendron tulipifera*

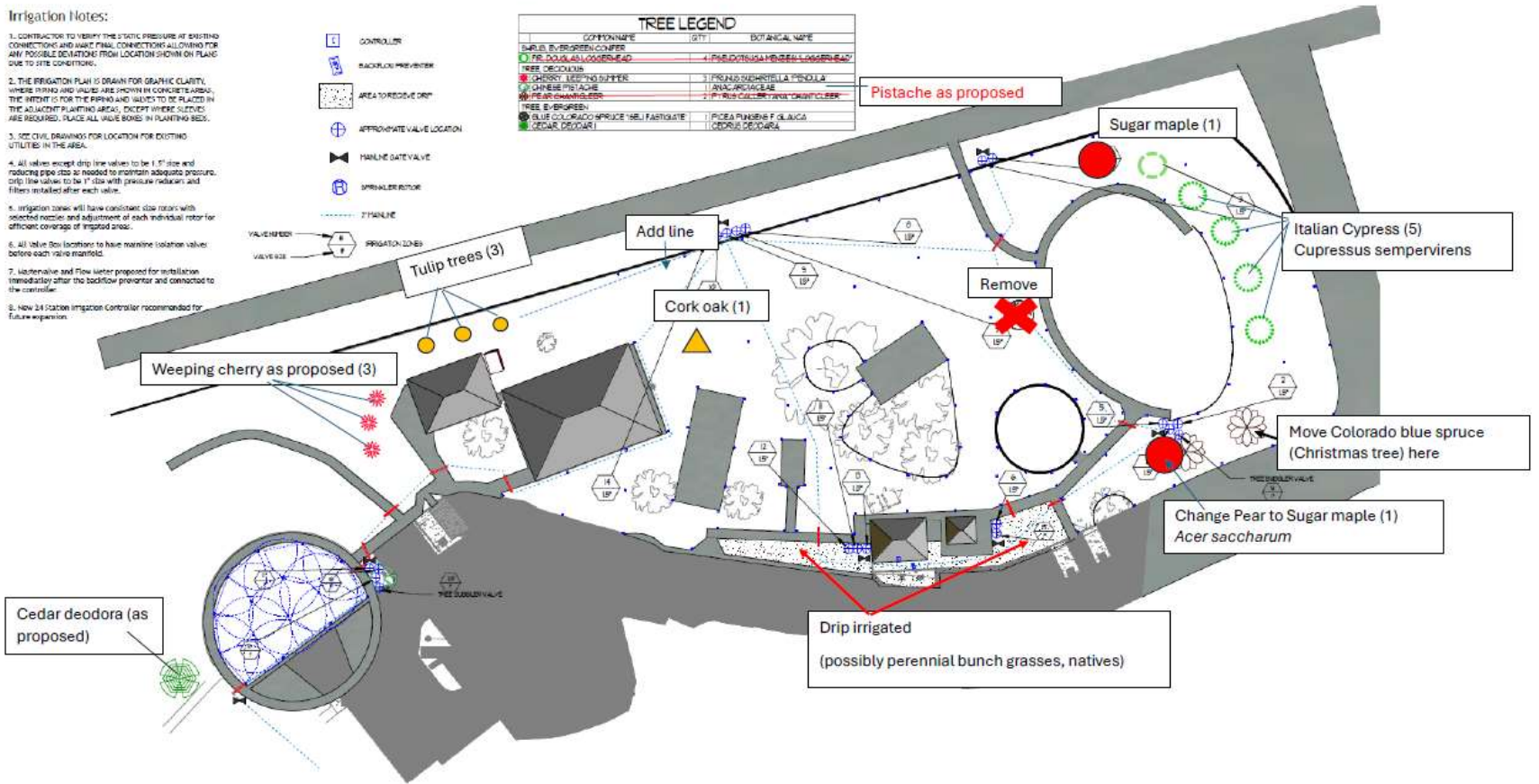
▲ Cork oak (1) - *Quercus suber*

**Irrigation Notes:**

1. CONTRACTOR TO VERIFY THE STATIC PRESSURE AT EXISTING CONNECTIONS AND AHEAD FINAL CONNECTIONS ALLOWING FOR ANY POSSIBLE DEVIATIONS FROM LOCATION SHOWN ON PLANS DUE TO SITE CONDITIONS.
2. THE IRRIGATION PLAN IS DRAWN FOR GRAPHIC CLARITY. WHERE TRUNKS AND VALVES ARE SHOWN IN CONCRETE AREAS, THE INTENT IS FOR THE PIPING AND VALVES TO BE PLACED IN THE ADJACENT PLANTING AREAS, EXCEPT WHERE SPECIFIED. WHERE REQUIRED, PLACE ALL VALVE BOXES IN PLANTING BEDS.
3. SEE CIVIL DRAWINGS FOR LOCATION FOR EXISTING UTILITIES IN THE AREA.
4. All valves except drip line valves to be 1.5" size and reducing pipe size as needed to maintain adequate pressure. Drip line valves to be 1/2" size with pressure reducers and filters installed after each valve.
5. Irrigation zones will have consistent slope ratios with selected nozzle and adjustment of each individual rotor for efficient coverage of irrigated areas.
6. All Valve Box locations to have mainline isolation valves before each valve manifold.
7. Meter valve and Flow meter proposed for installation immediately after the backflow preventer and connected to the controller.
8. New 1/4" Galvan irrigation controller recommended for future expansion.

- CONTROLLER
- BACKFLOW PREVENTER
- AREA TO RECEIVE DRIP
- APPROPRIATE VALVE LOCATION
- MAINLINE DATE VALVE
- SPRINKLER ROTOR
- 2" MAINLINE
- VALVE BOX
- VALVE BOX
- IRRIGATION ZONES
- TREE SUBMERG VALVE

| TREE LEGEND              |     |                                |
|--------------------------|-----|--------------------------------|
| COMMON NAME              | QTY | BOTANICAL NAME                 |
| 1. FR. DOUGLAS LOGSHEED  | 4   | PSUEDOTSUGA HENRIELI LOGSHEED  |
| TREE DEODORA             |     |                                |
| 2. CHERRY LEOPARD SUFFER | 3   | PRUNUS NERANTILLA PRINOLA      |
| 3. CHINESE PISTACHE      | 1   | ANACARDIACEAE                  |
| 4. PEAR BRANDBURGERS     | 2   | PIRUS CULTIVA TARA ORNITICULUS |
| TREE S-SPECIES:          |     |                                |
| 5. BLUE COLORADO SPRUCE  | 1   | PICEA PARSONSII P. GLAUCA      |
| 6. CEDAR DEODORA         | 1   | CEDRUS DEODARA                 |







# CEDAR DEODARA

Hillier Trees



# CHINESE PISTACHE



**The Home Depot**





WEEPING FLOWERING CHERRY -  
PRUNUS SUBHIRTELLA 'PENDULA'





# TULIP TREES

Practicality Brown





CORK  
OAK  
(EVERGREEN)





OTHER IDEAS...CORK OAK





SUGAR MAPLE

# ITALIAN CYPRESS





COLORADO BLUE  
SPRUCE



17 trees total

● Tulip trees (3) - *Liriodendron tulipifera*

▲ Cork oak (1) - *Quercus suber*

**Irrigation Notes:**

1. CONTRACTOR TO VERIFY THE STATIC PRESSURE AT EXISTING CONNECTIONS AND AHEAD FINAL CONNECTIONS ALLOWING FOR ANY POSSIBLE DEVIATIONS FROM LOCATION SHOWN ON PLANS DUE TO SITE CONDITIONS.
2. THE IRRIGATION PLAN IS DRAWN FOR GRAPHIC CLARITY. WHERE TRUNK AND VALVE ARE SHOWN IN CONCRETE AREAS, THE INTENT IS FOR THE PIPING AND VALVES TO BE PLACED IN THE ADJACENT PLANTING AREAS, EXCEPT WHERE SPECIFIED. REQUIRED: PLACE ALL VALVE BOXES IN PLANTING BEDS.
3. SEE CIVIL DRAWINGS FOR LOCATION FOR EXISTING UTILITIES IN THE AREA.
4. All valves except drip line valves to be 1.5" size and reducing pipe size as needed to maintain adequate pressure. Drip line valves to be 1/2" size with pressure reducers and filters installed after each valve.
5. Irrigation zones will have consistent slope ratios with selected nozzle and adjustment of each individual rotor for efficient coverage of irrigated areas.
6. All Valve Box locations to have mainline isolation valves before each valve manifold.
7. Meter valve and Flow meter proposed for installation immediately after the backflow preventer and connected to the controller.
8. New 1/4" Galvan irrigation controller recommended for future expansion.

- CONTROLLER
- BACKFLOW PREVENTER
- AREA TO RECEIVE DRIP
- APPROPRIATE VALVE LOCATION
- MAINLINE DATE VALVE
- SPRINKLER ROTOR
- 2" MAINLINE
- VALVE BOX
- VALVE BOX
- IRRIGATION ZONES
- TREE SUBMERG VALVE

| TREE LEGEND                |     |                               |
|----------------------------|-----|-------------------------------|
| COMMON NAME                | SYM | BOTANICAL NAME                |
| 1. FRI. DOUGLAS LOGSHEED   | 1   | PSUEDOTSUGA MUEZELI LOGSHEED  |
| TREE DEODORA               | 2   | QUERCUS SUBER                 |
| 3. CHERRY LEOPARD SUFFRUT. | 3   | PRUNUS NERANTILLA PRINOLA     |
| 4. CHINESE PISTACHE        | 4   | ANACARDIACEAE                 |
| 5. PEAR OR BAMBUSSE        | 5   | PIRUS CULTIVA TARA ORNITICLER |
| TREE S-SPRUSE:             |     |                               |
| 6. BLUE COLORADO SPRUCE    | 6   | PICEA PARSONSII F. GLAUCA     |
| 7. CEDAR DEODORA           | 7   | QUERCUS DEODORA               |

