



## MEMORANDUM

### City of Angels City Council

**Date:** August 20, 2024  
**To:** City Council  
**From:** Amy Augustine, AICP – Contract City Planner  
**Re:** Rural Recreation and Tourism Program - Utica Park Lightner Mine Expansion Project Update

#### **Recommendation:**

Acknowledge and accept updates.

#### **Background:**

Consistent with direction from the City Council, attached is an update on the above-captioned project through August 7, 2024.

#### **Strategic Plan Alignment**

**A4: Economic Development: Promote a wide variety of economic opportunities consistent with the city's social, cultural, environmental, and aesthetic resources.** The proposed Rural Recreation and Tourism grant park project is intended to increase tourism through park enhancements including a stage, historical (cultural) interpretation trail, and improved pavilion for outdoor events. A new children's playground, adult/teen exercise equipment, bocce courts, hardcourts, improved pavilion and stage are intended to encourage social interactions with local theatre productions, local musical performances, movies in the park and enhanced outdoor spaces for other local events.

**A5: Economic Development: Maintain and enhance the city's economic vitality while conserving the city's social, cultural, environmental, and aesthetic resources.** See above.

**B2 Community Identity: Design new development to be compatible with the natural, scenic, and cultural resources and rural character of Angels Camp.** The Community Stakeholders Design Committee will assist with park design to ensure compatibility with cultural resources and rural character.

**C7: Public Facilities and Services: Maintain or increase the levels of service currently available within Angels Camp for park facilities and infrastructure.** The project will increase the size of Utica Park by 3.8± acres, add or improve numerous park amenities, and upgrade and expand infrastructure increasing the level of park facilities available to all age groups and ability levels for residents and visitors.

#### **Discussion**

##### Construction

##### Phase 1:

Playground equipment continued through 8/7/24. All equipment has arrived at the contractor's warehouse in Modesto. The contractor is expected to remain on site until the playground is completed. Initial hook-up inspections for water/sewer for the new bathrooms were approved 7/26/24 and the bathroom is scheduled for

delivery 8/14/24 at 9 a.m.. A brown (Mocha caramel) ribbed metal roof tops the bathrooms. The stone is concrete. The siding is a board and batten look in sand beige.



Budget permitting, the exterior of the existing bathroom will be refurbished to closely match the new bathroom structure.

A late July newsletter was released. A note on how to keep up to date on the park is being included in the next water invoice.

Future phases:

Work is being completed to clear the way for proceeding with upcoming phases. The vertical shafts at the park have been plugged. Rustic wrought iron fencing was selected for the New Lightner Mine (adjacent to the highway). The shaft was previously fenced with barbed wire and posts.

PRELIMINARY architectural design of the outdoor stage and pavilion have been drafted (See below). The Planning Commission will consider metal roof color selection and some material selections for the two structures for a finding of architectural conformity given the location of the structures within the historical district.

Figure 1: Preliminary Design Pavilion Rehabilitation (Metal roof, skylights, stone surrounds)

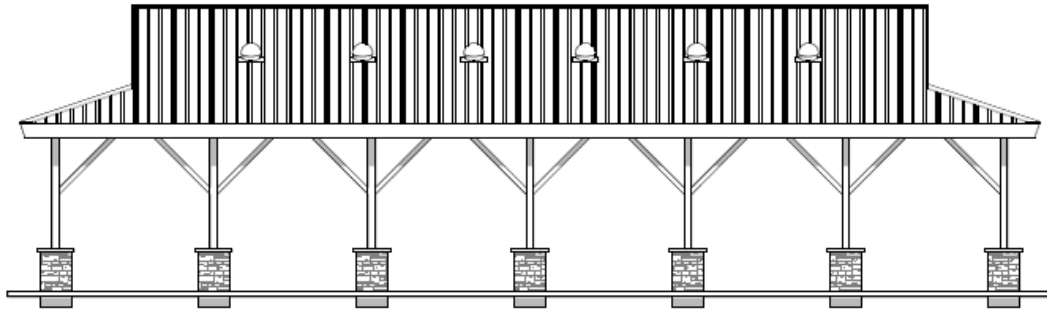


Figure 2: Preliminary Design Stage

Grass seating generally in a circle radiating from the stage is preliminarily planned (see following figure).

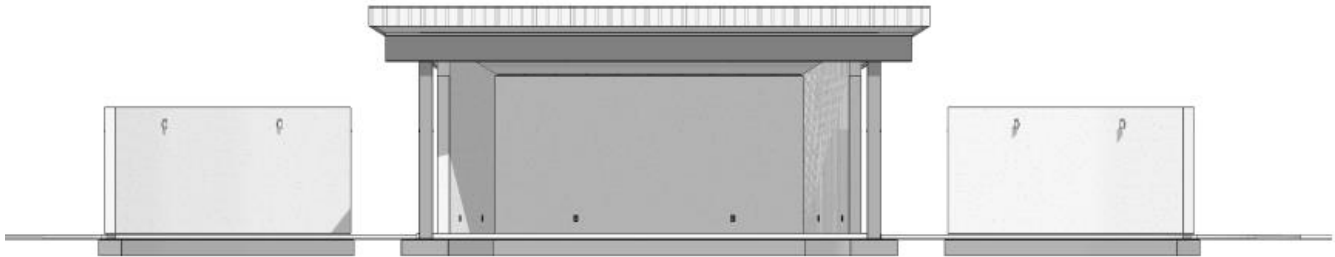
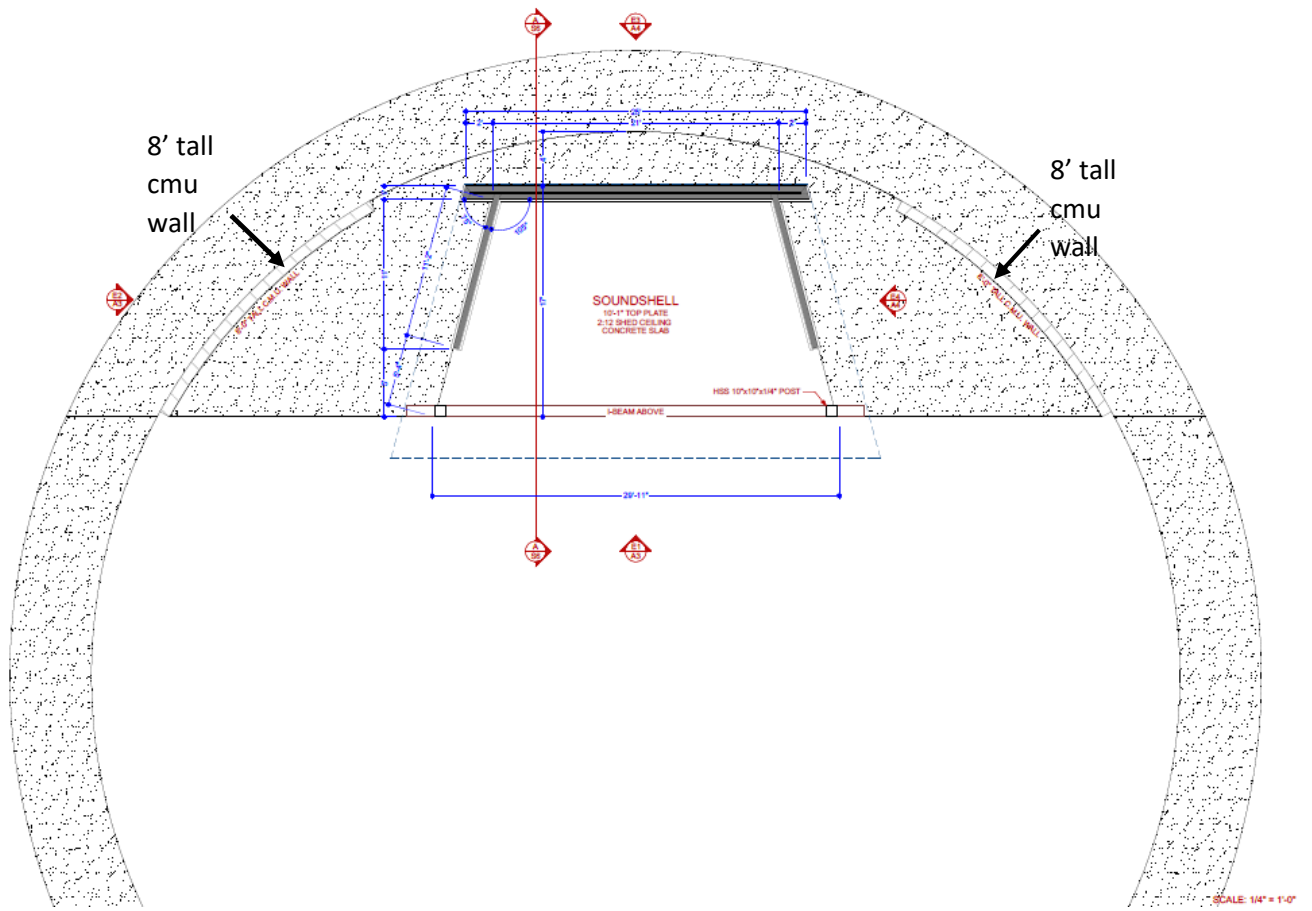


Figure 1: Preliminary Stage Design



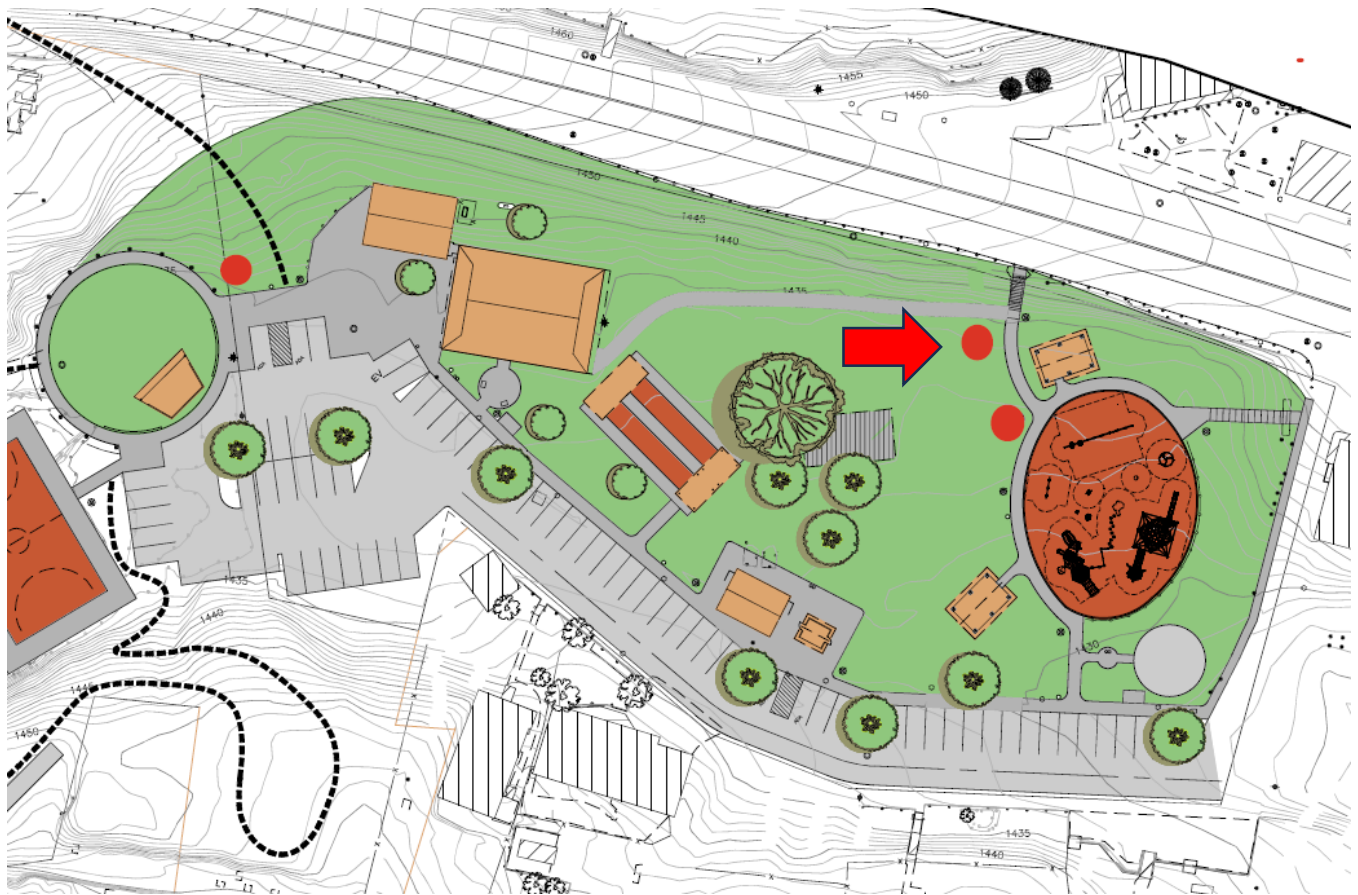
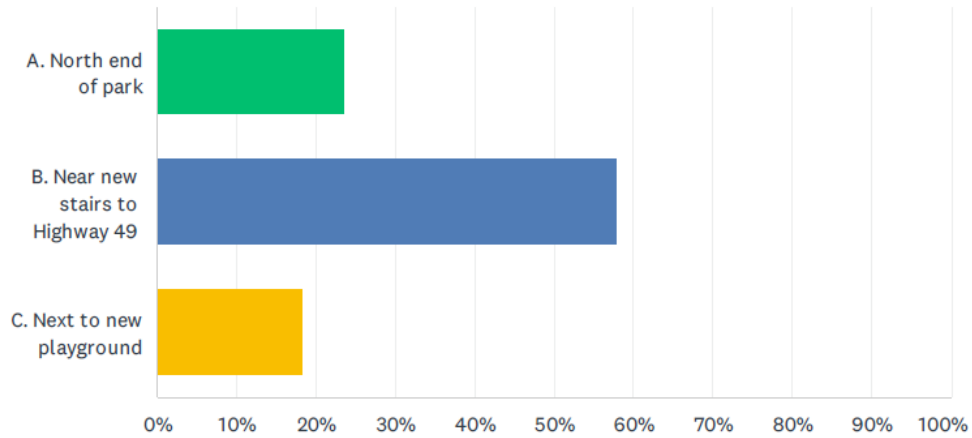






Renovation of the Mark Twain statue continues. The statue has been repainted. Minor final touch ups remain along with retrofits to attach the statue to the base. The return of the statue to the pedestal will occur after most site disturbances in the Phase 1 construction area are complete, but before sod is installed.

A QR Code and Survey Monkey poll asking for input on the final location of the Mark Twain Statue was released online and made available at the museum and City Hall. As of 7/31/24, 38 votes were cast when the survey officially closed. The clear winner is for the statue to be located at the base of the old stairway (being reconstructed) entering the park (See red arrow).



## Design and Build Contract Process

Boyer Construction was selected to design and build the project. A design and build contract is unlike a construction-only contract. Construction-only contracts generally are used to construct a new road, widen an existing road, construct a new bridge, construct a new building. Construction-only contracts are awarded after construction documents are complete (i.e., detailed construction drawings and building plans) and all necessary permits have been reviewed and are issued (e.g., building permits, grading permits). At that point, a Notice to Proceed "NTP" is normally issued under a construction-only contract. The Utica Park/Lightner Mine Expansion Project is NOT one of those projects. It is a design and build project.

As a design and build contract, the park renovation requires a design phase first, followed by the creation of construction documents, followed by construction. Finalizing a site plan for this project was contingent upon completing geotechnical evaluations. The City approved a site plan April 16, 2024. This was followed by finalizing a survey to ensure the approved site plan could move forward. This was accomplished April 30, 2024. **A notice to proceed was issued and became effective on May 14, 2024, for 307 workdays.**

Park construction will be phased. This means park construction will begin before 100% of all park construction documents are completed. Construction will be consecutive. Construction for each element will commence upon completion of plans for that park element. Because the site plan for the playground was approved months ago, playground construction requires relatively minimal grading, and all park equipment was ordered in April with an expectation of delivery 12 weeks later (i.e., July).

While playground construction is being completed, plans for the next targeted park amenity will be completed so that construction on the next park element can begin...and so on and so on and so on until the park is completed. Following playground construction, it is anticipated, subject to change, that underground work for utilities in the existing park will occur followed by installing the new bathrooms, mine remediation and design of the outdoor stage and pavilion.

### Other Activity summary:

- The park's Constant Contact e-mail notification database created for persons interested in park updates, newsletters, status reports include 203 individuals. Please send an e-mail to [cda@angelscamp.gov](mailto:cda@angelscamp.gov) with a subject line "Utica Park" to receive notifications.
- Wood for park benches from the walnut trees is at the mill. A sample from the wood is shown. 12 four-foot (2" thick) benches with simple metal supports will be produced at a cost of \$1,500. The cost includes a memorial plaque. A flyer was drafted 8/6/24 and released to those who have already indicated interest in a reservation. . Others will be invited to reserve a bench in the coming days. In the interim, please send an e-mail to [cda@angelscamp.gov](mailto:cda@angelscamp.gov) to reserve your bench.





## Utica Park Memorial Community Benches

### Reserve your memorial or community bench today!

You can reserve your bench by completing an application online at (attached).

Once approved, the City will send an invoice for payment.

Benches will be first come, first served.

Bench locations have not yet been established, but the City will work with each of you to find the one that suits you best.

For further information, contact:  
Angels Camp Community Development Department  
(209) 736-1346  
[Planning@angelscamp.gov](mailto:Planning@angelscamp.gov)

**\$1,500 each**

No two alike  
12 available

Black walnut from Utica Park trees

4' wide, 2" thick (before drying)

Flat bench, no back

Custom metal cross supports

Live edge

Sanded and sealed

Memorial plaque included

Installation included



Background photo: milled, untreated lumber to be used for benches





**COMMUNITY DEVELOPMENT**

CITY OF ANGELS PO Box 667, 200 Monte Verda St. Suite B, Angels Camp, CA 95222 P: (209) 736-1346

## **Utica Park Memorial Community Bench Reservation Application**

This program is designed to pay tribute to a living or deceased person and is not intended for advertising. A business may be mentioned as the donor.

The life of the bench is based on location, exposure to the elements, and level of use. However, the City will make their best effort to notify the donor if or when the bench becomes deteriorated and unsafe for use.

The benches remain the property of the City of Angels.

Name (donor): \_\_\_\_\_

e-mail: \_\_\_\_\_

Phone: \_\_\_\_\_

Bench to be in the name of: \_\_\_\_\_

Relationship to the donor: \_\_\_\_\_

Each bench is \$1,500 and includes the cost of a plaque and installation. Benches are locally handcrafted by Millworkz from black walnut trees removed from Utica Park. Each is 2" thick and four feet long with varying widths (before drying). See attached flyer for additional bench details.

Benches are expected to be installed in fall 2024 or early 2025.

I have read and agree to the preceding.

\_\_\_\_\_

Signed

\_\_\_\_\_

Date

- Parties interested in sponsoring a memorial tree or a memorial bench are encouraged to submit their name to [cda@angelscamp.gov](mailto:cda@angelscamp.gov). To date, there are eight individuals expressing interest, some for multiple trees or benches. Signing up does not commit individuals to a purchase. Interested persons will be notified once costs are determined.
- Staff is requesting that anyone with a brand from a local ranch contact [planning@angelscamp.gov](mailto:planning@angelscamp.gov). The city would like to incorporate local brands into one or more of the benches being constructed for the park. Staff has three sign-ups for local brands and has reached out to the Cattleman's Association (Nicolas Valente) and Farm Bureau (Toni Ann Fischer) for additional interest.
- The interpretive sign committee met April 30, 2024. The Committee is editing content and selecting photos for 8 interpretive signs. Committee members are Judith Marvin (historian), Tad Folendorf (historian), James G. Respass, Ph.D. (graphic design), Amy Augustine, Rebecca Callen. Interpretive sign language for the Mother Lode Belt, Lightner Mine, Utica Mine, persons associated with the mines, and Nationalities represented in the has been drafted. Overview of a working mine, and supplemental information related to Mark Twain is pending. QR codes are also proposed for various locations and on interpretive signs to provide additional information. The concept sign design was presented to the Community Stakeholders Design Committee 3/20/24. Signage will be brought back to the Stakeholders Design Committee in August.
- Monuments, Dedications, and Relocations. Staff has met with all individuals or organizations associated with each monument to ensure they are handled properly. Surviving relatives of fallen soldiers on the veteran's memorial plaque have been contacted individually and their input will be followed for any potential relocation and rededication. Boyer is aware of all restrictions related to moving and conserving park monuments.
- The "gateway" monumentation (mining equipment) near Napa was reviewed by the City of Angels Planning Commission. The Planning Commission approved relocating the equipment. Interpretive signage for the equipment will be added at its new location. Boyer is further investigating if costs to reinforce the gateway monumentation can occur instead of relocation. As of 8/7/24, the costs of reinforcing the monument in its current position are significantly less than relocation.

## **Financial Impact**

See attached budget.

## **Attachments**

- A. Approved Site Layout
- B. Timeline
- C. Budget