



MEMORANDUM

City of Angels City Council

Date: October 1, 2024
To: City Council
From: Amy Augustine, AICP – Contract City Planner
Re: Rural Recreation and Tourism Program - Utica Park Lightner Mine Expansion Project Update

Recommendation:

Acknowledge and accept updates.

Background:

Consistent with direction from the City Council, attached is an update on the above-captioned project through September 24, 2024.

Strategic Plan Alignment

A4: Economic Development: Promote a wide variety of economic opportunities consistent with the city's social, cultural, environmental, and aesthetic resources. The proposed Rural Recreation and Tourism grant park project is intended to increase tourism through park enhancements including a stage, historical (cultural) interpretation trail, and improved pavilion for outdoor events. A new children's playground, adult/teen exercise equipment, bocce courts, hardcourts, improved pavilion and stage are intended to encourage social interactions with local theatre productions, local musical performances, movies in the park and enhanced outdoor spaces for other local events.

A5: Economic Development: Maintain and enhance the city's economic vitality while conserving the city's social, cultural, environmental, and aesthetic resources. See above.

B2 Community Identity: Design new development to be compatible with the natural, scenic, and cultural resources and rural character of Angels Camp. The Community Stakeholders Design Committee will assist with park design to ensure compatibility with cultural resources and rural character.

C7: Public Facilities and Services: Maintain or increase the levels of service currently available within Angels Camp for park facilities and infrastructure. The project will increase the size of Utica Park by 3.8± acres, add or improve numerous park amenities, and upgrade and expand infrastructure increasing the level of park facilities available to all age groups and ability levels for residents and visitors.

Discussion

Phase II Plans for the park have been received and approved by the City. (Phase 1 included the park and bathroom, Phase II includes the pavilion, hardcourts, bocce, stage).

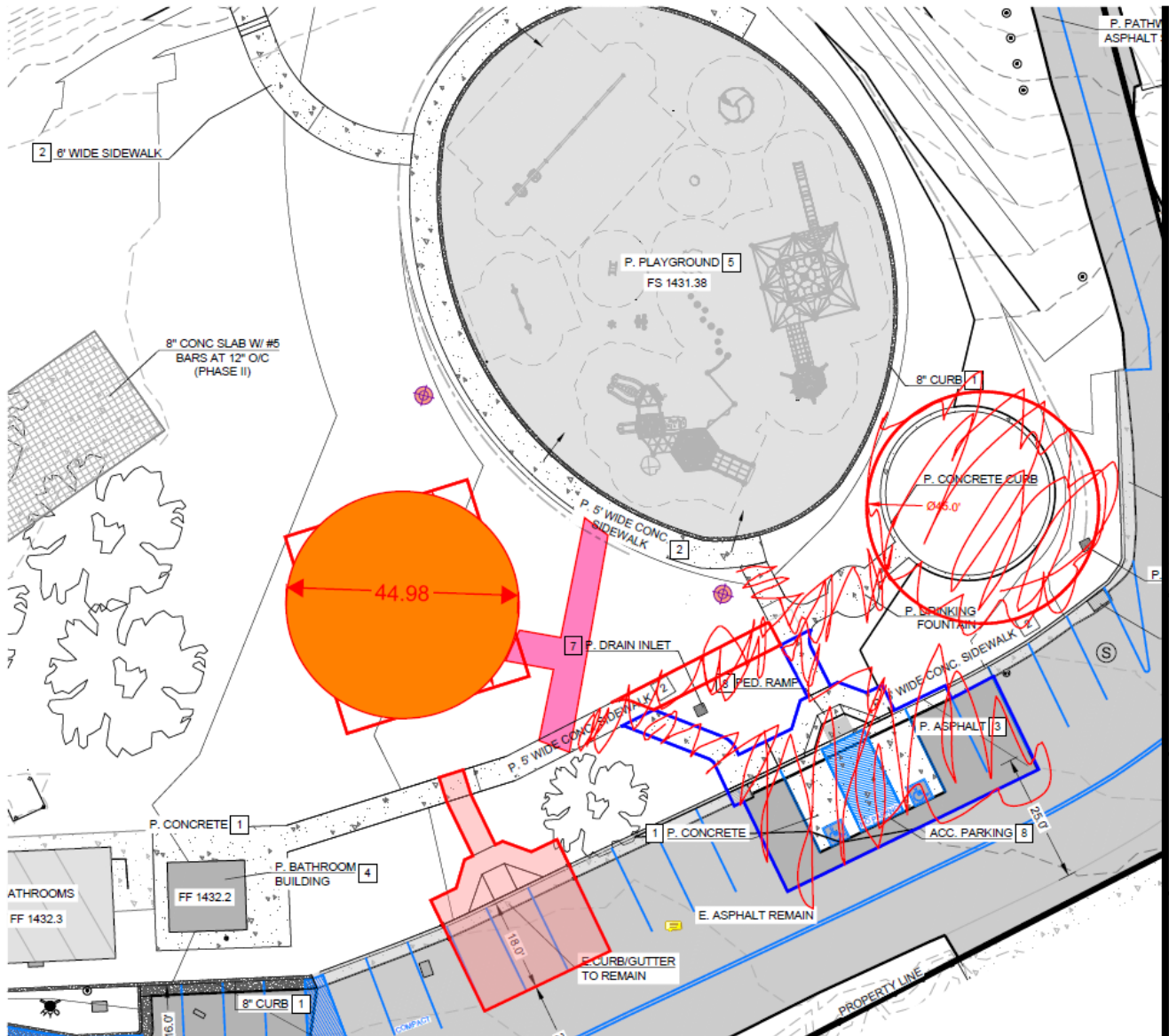
Hydration Stations

Staff contacted the T-Stan IRWMA. Funding for hydration stations has been exhausted. However, there are funds available for hydration stations accessible to the underhoused. Per City Council

direction, staff contacted T-Stan IRWMA and was informed that there are no special requirements for this funding source. Staff has requested that the City of Angels be placed on “the list” to receive funding. It is anticipated that approximately \$60,000 may be available on or about January, 2025.

Outdoor Gym

The City received an updated cost for this park feature and anticipates placing an order in October, if the Task Order for Boyer is approved as proposed. To accommodate the fall zones for the gym equipment, the outdoor gym has been relocated to the north side of the playground—between the playground and the new bathroom (previously, it was on the south side). Equipment is not expected to arrive prior to January if ordered in October.



Playground

The playground equipment has been installed and the safety inspection completed by a third-party certified inspector. Stickers were placed on all equipment identifying age-appropriateness and stumps were re-anchored. The final certification is expected soon. As per City Council direction on 9/17/24, the playground will not be opened for public use during construction. It is possible that a limited one-day/half-day opening may be permitted once ADA sidewalks are completed to the playground.

Fencing around New Lightner Shaft (adjacent to highway)

Fence posts were installed as of 8/27/24 and panels were completed on three sides. Caltrans approved work within Caltrans' ROW for the fence. The fence will be allowed to rust naturally (i.e., will not be painted). Public Works has approved the location and design of the man-gate for the fencing. Fence completion was expected the week of 9/23/24.

Pad over Old Lightner Shaft (in the pit)

The 50 X 50 pad over the Old Lightner shaft has been completed. Some residents have asked if the pad is the same as the hardcourt for the park. It is not.

Stage and Pavilion.

Metal roofing installation commences 9/25/24. Painting for the pavilion began the week of 9/16/24 along with pouring box supports for the pavilion. Decorative rock material will now be applied to the box supports.

Landscaping

Steve Williams and Amy Augustine met with the landscaping consultant team on 8/23/24 to review the City's needs relative to irrigation and landscaping. Once a draft landscaping plan is available, it will be presented to the Utica Park Community Design Review Committee for review. Once established, the City will begin taking reservations for memorial trees to be planted at the park. An estimated 15 donated trees will be available. Additional trees may be added. It is anticipated that commemorative trees will cost approximately \$500 for a 15-gallon tree including a plaque. Staff is recommending a reduced cost for trees and plaques commemorating veterans, at \$350.00.

Black Walnut Benches

Millworkz presented the City with a mock-up of one of the benches created from the black walnut trees from the park. Authorization was given allowing variable sizing (none shorter than four feet) to maintain the natural beauty and shape of the wood milled from the trees. Five of the twelve benches have been reserved @ \$1,500 with other reservations anticipated soon. The benches can be reserved by families, as a memorial, or by local organizations. Benches are not available for advertising. A bench can be reserved by contacting cda@angelscamp.gov. (Photos are of an unfinished bench. Each will be different.)



Financial Impact

See attached budget.

Attachments

- A. Approved Site Layout
- B. Timeline
- C. Budget