



## MEMORANDUM

### City of Angels Planning Commission

---

**Date:** August 8, 2024

**To:** City of Angels Planning Commissioners

**From:** Amy Augustine, AICP City Planner

**Re:** Resolution 24-12 Finding of Architectural Conformity for the Utica Park/Lightner Mine Pavilion and Stage

#### **Recommendation:**

Adopt Resolution 24-12 recommending colors to be used on the Pavilion and Stage.

#### **Background:**

The City of Angels is undertaking a rehabilitation and expansion of the Utica Park/Lightner Mine. The project includes rehabilitation of the existing pavilion, kitchen exterior, and constructing a new stage. The structures will be highly visible from SR 49 within the Historic District. All structures will have metal roofing in accordance with the grant requirements. Planning Commission input on an appropriate color for the metal roof on the kitchen and pavilion and on the roofing and siding color for the stage are being requested for guidance.

#### **Strategic Plan Alignment**

*A1 Conservation and Open Space: Maintain and, where feasible, enhance the city's appearance.*

*A5 Economic Development: Maintain and enhance the city's economic vitality while conserving the city's social, cultural, environmental, and aesthetic resources*

The structures are intended to enhance the city's appearance and economic vitality while conserving the cultural resources setting of the city.

#### **Discussion:**

The adopted park layout is provided in Figure 1. The location of the existing pavilion and proposed stage are highlighted. Another structure will include a new two-stall unisex ADA bathroom. The already constructed bathroom has a brown (Mocha caramel) ribbed metal roof with decorative concrete stone and a board and batten siding in sand beige (Figure 2). The exterior of the existing bathroom will be renovated with a similar exterior.

One issue to be resolved by the Planning Commission: Should the existing pavilion, kitchen and new stage employ the same color scheme as the bathrooms or a different one? To assist in the evaluation, the draft layout for the existing pavilion (Figure 3) and stage (Figures 4 -6) is included. All will have metal roofing. A color chart of available metal roofing colors is provided.

Figure 1: Utica Park/Lightner Mine Site Plan

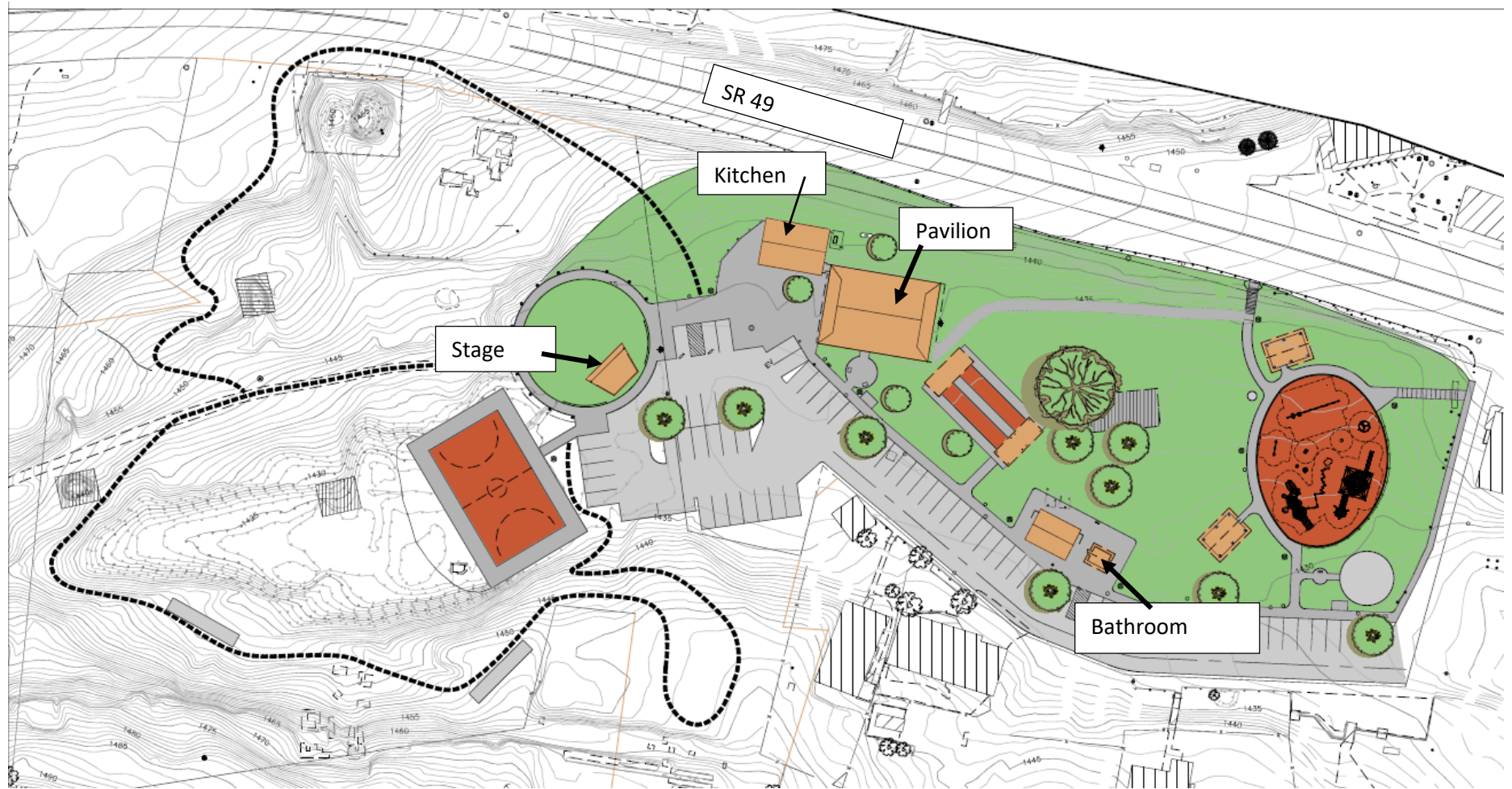


Figure 2: Utica Park New Bathroom (Actual, Constructed)



Figure 3: Preliminary Design Pavilion Rehabilitation (Metal roof, skylights, stone surrounds, existing wood supports)

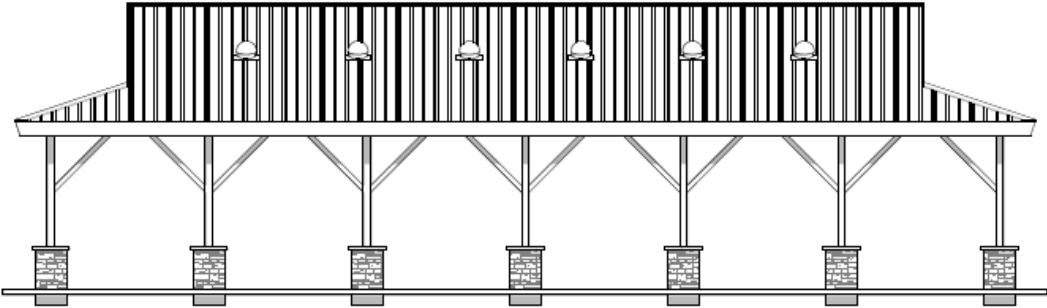


Figure 4: Preliminary Design Stage - Front (walls on either side are curved cement block)



Figure 5: Preliminary Stage Design

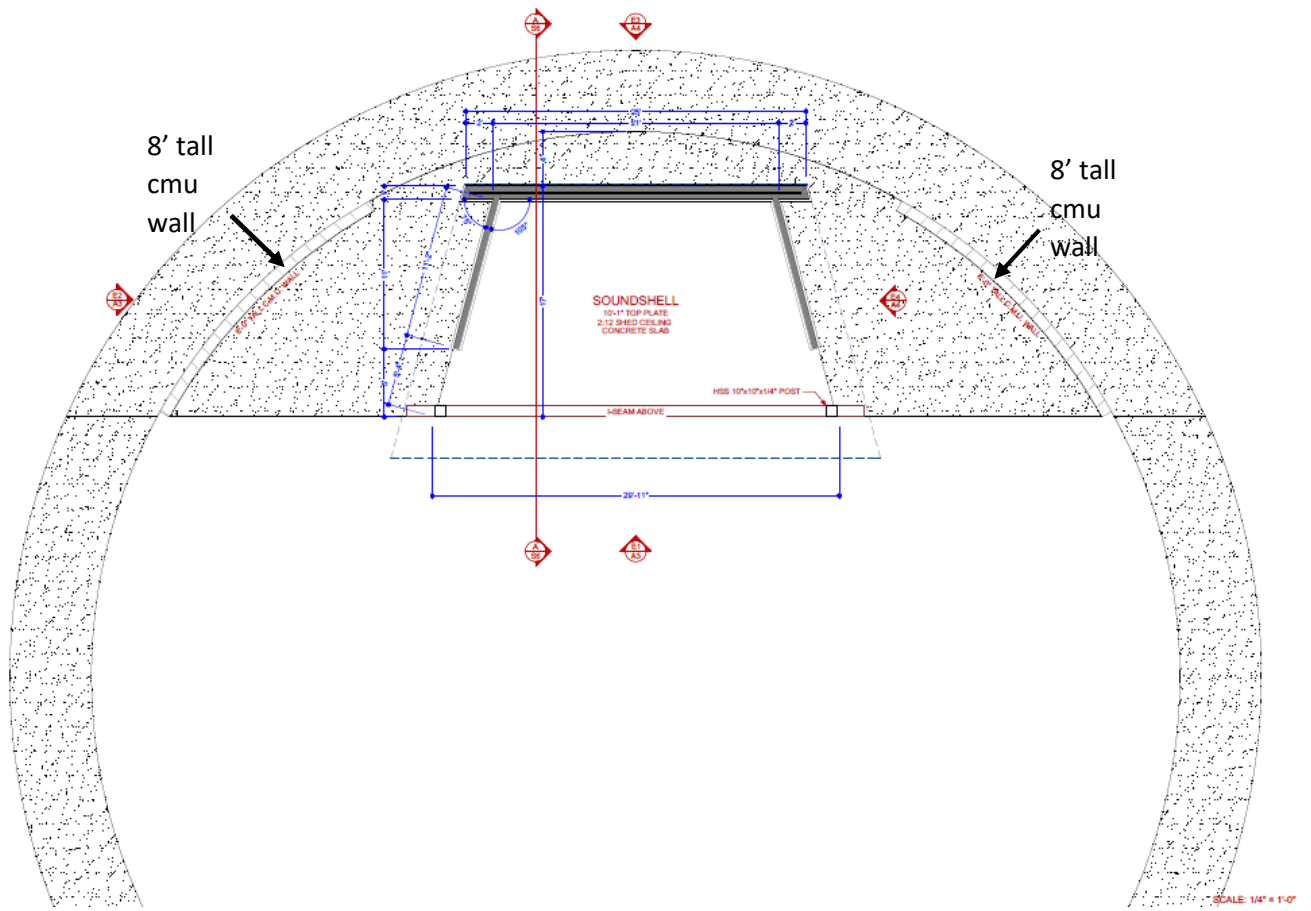


Figure 6 – Top View

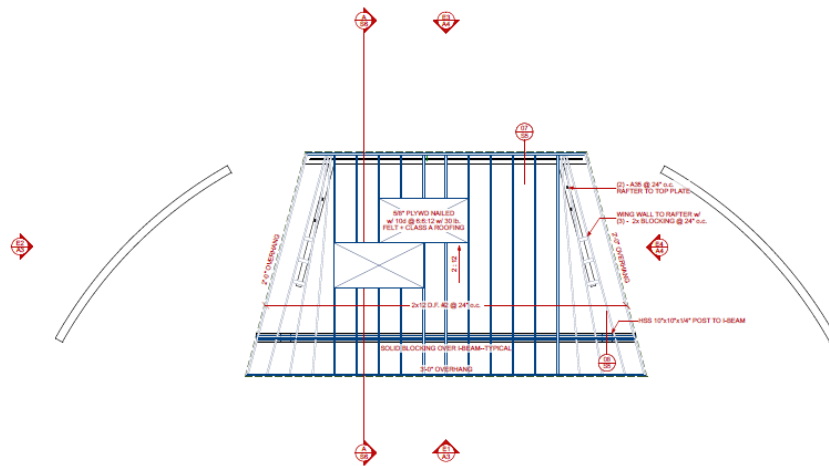
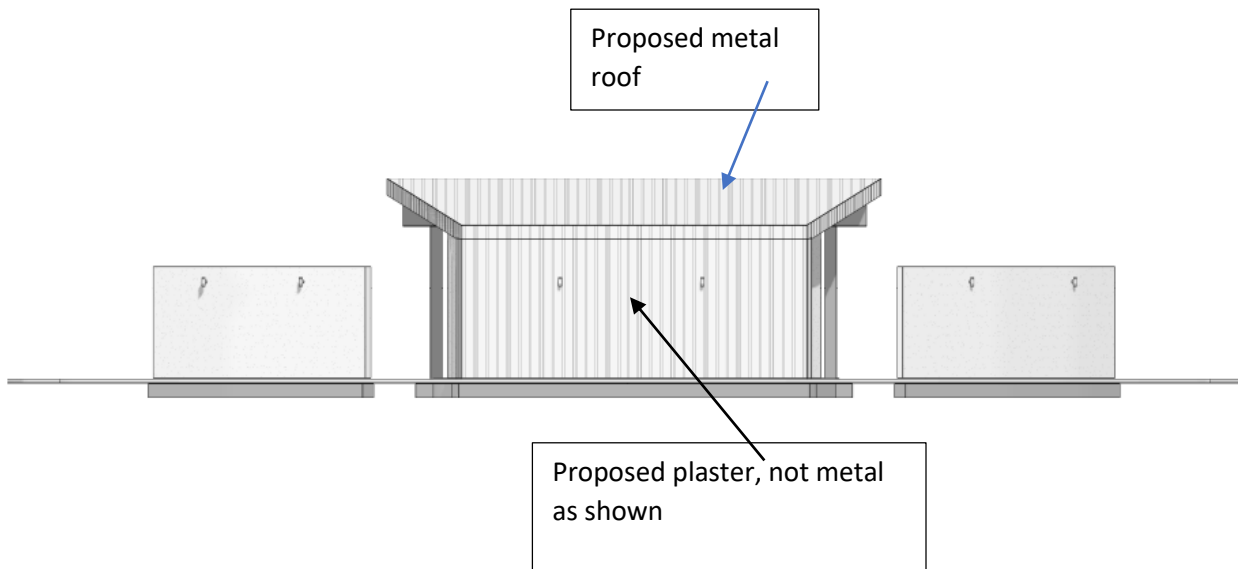


Figure 7 - Rear View Stage



**Discussion/Analysis/Findings**

Pursuant to Section 17.26.080 of the Angels Municipal Code (AMC), the following finding is required:

*The proposed project is consistent with the Mother Lode style of architecture.*

In this particular case, the City is requesting this finding relative to the siding color and materials and roofing color on the stage, the roofing color on the pavilion, and the roofing color and siding color on the kitchen.

Given the relatively earth-tone colors provided in the color palette, and their similarity with most Benjamin Moore Historic Color Palette colors, staff does not anticipate that any of the selected colors would be inconsistent with the Mother Lode Style of architecture and this finding could be made.

**Environmental Findings**

The project is exempt from the state and city guidelines pursuant to the Notice of Exemption filed for the Utica Park and Lightner Mine Expansion Project filed July 25, 2019 pursuant to Section 15061(b)(3) of the state CEQA guidelines, the common sense exemption.

**Financial Impact:**

Deviations from the color palette shown for roofing will be an added cost.

**Attachments**

- A. Color Palette
- B. Resolution 24-12

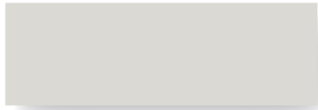




# Metal Roofing & Siding Finish Options

## Standard Kynar 500® Coatings

*20 or 30-year Commercial, Non-Transferable, Non-Prorated, Limited Warranty  
40-Year Residential, Transferable, Non-Prorated Limited Warranty*



Glacier White SRI-85



Sierra Tan SRI-60



Parchment SRI-58



Sterling Grey SRI-44



Zinc Grey SRI-39



Charcoal Grey SRI-25



Saddle Tan SRI-37



Medium Bronze SRI-36



Tahoe Blue SRI-31



Pacific Blue SRI-26



Hemlock Green SRI-36



Forest Green SRI-24



Graphite Black SRI-26



Dark Bronze SRI-22



Musket SRI-31



Pine Green SRI-25



Matte Black SRI-23



Terra Cotta SRI-43



Tile Red SRI-35



Colonial Red SRI-37



Retro Red SRI-42

SRI = Solar Reflective Index value. These are not paint codes.