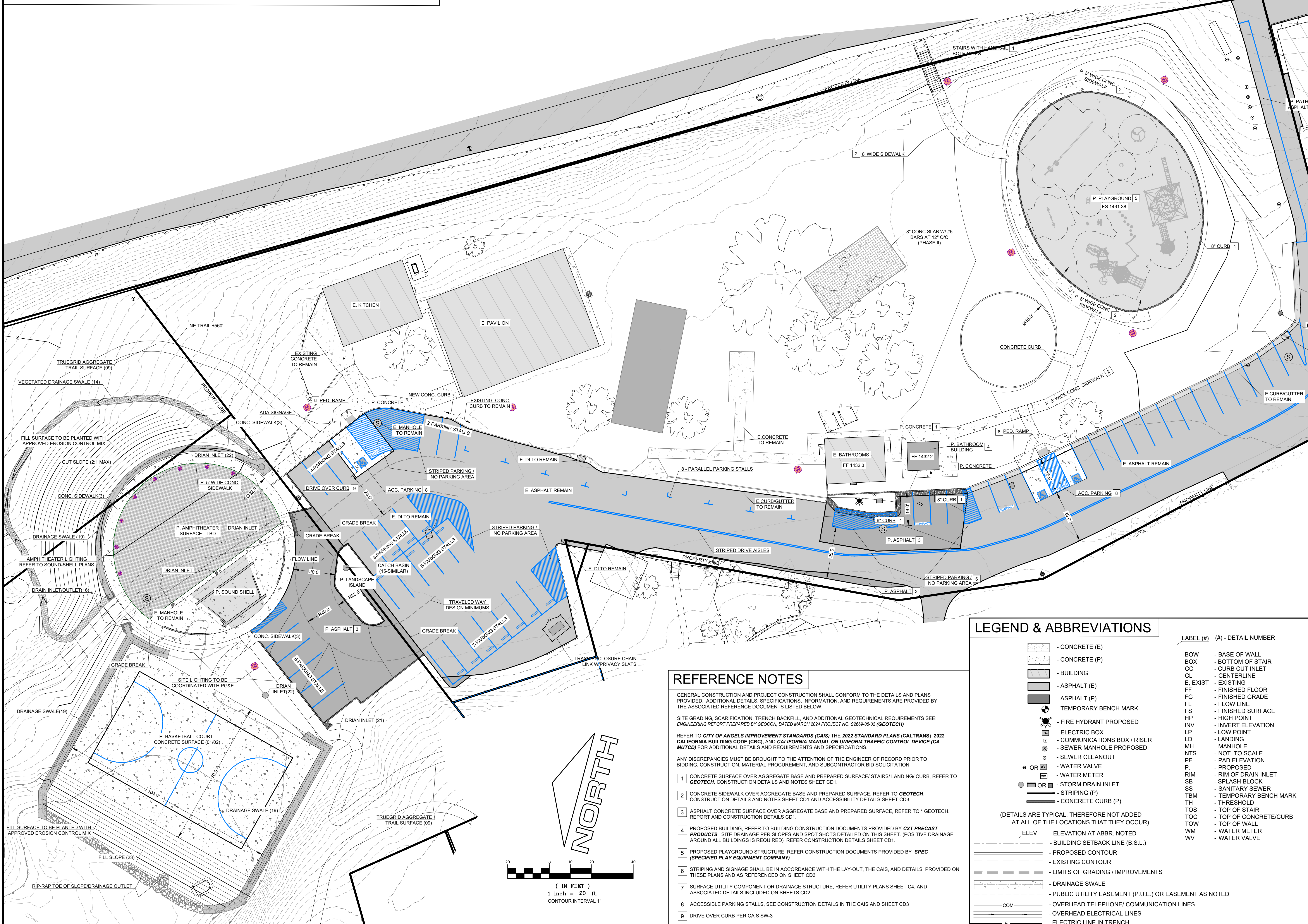


SITE IMPROVEMENT PLAN



REFERENCE NOTES

- GENERAL CONSTRUCTION AND PROJECT CONSTRUCTION SHALL CONFORM TO THE DETAILS AND PLANS PROVIDED. ADDITIONAL DETAILS, SPECIFICATIONS, INFORMATION, AND REQUIREMENTS ARE PROVIDED BY THE ASSOCIATED REFERENCE DOCUMENTS LISTED BELOW.
- SITE GRADING, SCARIFICATION, TRENCH BACKFILL, AND ADDITIONAL GEOTECHNICAL REQUIREMENTS SEE: ENGINEERING REPORT PREPARED BY GEOCON, DATED MARCH 2024 PROJECT NO. S2669-05-02 (GEOTECH)
- REFER TO CITY OF ANGELS IMPROVEMENT STANDARDS (CAIS) THE 2022 STANDARD PLANS (CALTRANS) 2022 CALIFORNIA BUILDING CODE (CBC), AND CALIFORNIA MANUAL ON UNIFORM TRAFFIC CONTROL DEVICE (CA MUTCD) FOR ADDITIONAL DETAILS AND REQUIREMENTS AND SPECIFICATIONS.
- ANY DISCREPANCIES MUST BE BROUGHT TO THE ATTENTION OF THE ENGINEER OF RECORD PRIOR TO BIDDING, CONSTRUCTION, MATERIAL PROCUREMENT, AND SUBCONTRACTOR BID SOLICITATION.
- CONCRETE SURFACE OVER AGGREGATE BASE AND PREPARED SURFACE/ STAIRS/ LANDING/ CURB. REFER TO GEOTECH, CONSTRUCTION DETAILS AND NOTES SHEET CD1 AND ACCESSIBILITY DETAILS SHEET CD3.
 - CONCRETE SIDEWALK OVER AGGREGATE BASE AND PREPARED SURFACE. REFER TO GEOTECH, REPORT AND CONSTRUCTION DETAILS CD1.
 - ASPHALT CONCRETE SURFACE OVER AGGREGATE BASE AND PREPARED SURFACE. REFER TO GEOTECH, REPORT AND CONSTRUCTION DETAILS CD1.
 - PROPOSED BUILDING. REFER TO BUILDING CONSTRUCTION DOCUMENTS PROVIDED BY CXT PRECAST PRODUCTS. SITE DRAINAGE PER SLOPES AND SPOT SHOTS DETAILED ON THIS SHEET. (POSITIVE DRAINAGE AROUND ALL BUILDINGS IS REQUIRED). REFER CONSTRUCTION DETAILS SHEET CD1.
 - PROPOSED PLAYGROUND STRUCTURE. REFER CONSTRUCTION DOCUMENTS PROVIDED BY SPEC (SPECIFIED PLAY EQUIPMENT COMPANY).
 - STRIPING AND SIGNAGE SHALL BE IN ACCORDANCE WITH THE LAY-OUT, THE CAIS, AND DETAILS PROVIDED ON THESE PLANS AND AS REFERENCED ON SHEET CD3.
 - SURFACE UTILITY COMPONENT OR DRAINAGE STRUCTURE. REFER UTILITY PLANS SHEET C4, AND ASSOCIATED DETAILS INCLUDED ON SHEETS CD2.
 - ACCESSIBLE PARKING STALLS. SEE CONSTRUCTION DETAILS IN THE CAIS AND SHEET CD3.
 - DRIVE OVER CURB PER CAIS SW-3.

LEGEND & ABBREVIATIONS

	- CONCRETE (E)		- LABEL (#) - DETAIL NUMBER
	- CONCRETE (P)	BOW	- BASE OF WALL
	- BUILDING	BOX	- BOTTOM OF STAIR
	- ASPHALT (E)	CC	- CURB CUT INLET
	- ASPHALT (P)	CL	- CENTERLINE
	- TEMPORARY BENCH MARK	E, EXIST	- EXISTING
	- FIRE HYDRANT PROPOSED	FF	- FINISHED FLOOR
	- ELECTRIC BOX	FG	- FINISHED GRADE
	- COMMUNICATIONS BOX / RISER	FL	- FLOW LINE
	- SEWER MANHOLE PROPOSED	FS	- FINISHED SURFACE
	- SEWER CLEANOUT	HP	- HIGH POINT
	- WATER VALVE	INV	- INVERT ELEVATION
	- WATER METER	LP	- LOW POINT
	- STORM DRAIN INLET	LD	- LANDING
	- STRIPING (P)	MH	- MANHOLE
	- CONCRETE CURB (P)	NTS	- NOT TO SCALE
		PE	- PAD ELEVATION
		P	- PROPOSED
		RIM	- RIM OF DRAIN INLET
		SB	- SPLASH BLOCK
		SS	- SANITARY SEWER
		TBM	- TEMPORARY BENCH MARK
		TH	- THRESHOLD
		TOS	- TOP OF STAIR
		TOC	- TOP OF CONCRETE/CURB
		TOW	- TOP OF WALL
		WM	- WATER METER
		WV	- WATER VALVE

(DETAILS ARE TYPICAL, THEREFORE NOT ADDED AT ALL OF THE LOCATIONS THAT THEY OCCUR)

ELEV - ELEVATION AT ABBR. NOTED

- BUILDING SETBACK LINE (B.S.L.)

- PROPOSED CONTOUR

- EXISTING CONTOUR

- LIMITS OF GRADING / IMPROVEMENTS

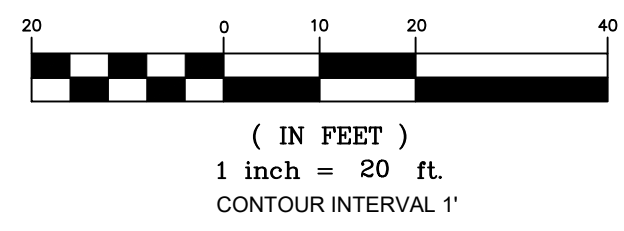
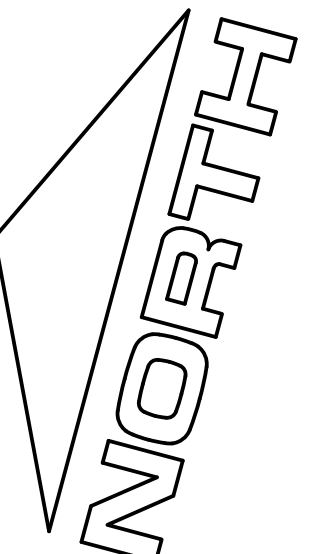
- DRAINAGE SWALE

- PUBLIC UTILITY EASEMENT (P.U.E.) OR EASEMENT AS NOTED

- OVERHEAD TELEPHONE/ COMMUNICATION LINES

- OVERHEAD ELECTRICAL LINES

- ELECTRIC LINE IN TRENCH



Land & Structure
SURVEYING | ENGINEERING | DESIGN

105 SOUTH STEWART STREET, SONOMA, CALIFORNIA, 95370 T: 209.532.5173 F: 209.532.5220

REVISIONS:

rev	date	description

OWNER INFORMATION:
City of Angels
P.O. Box 667
Angels Camp, Ca 95222
Ph (209) 736.2181

SITE INFORMATION:
APN 060-006-006/008
1075 Utica Lane
Angels Camp, CA 95222

PROJECT INFORMATION:

A Site Improvement Plan for:
Utica Park
1075 Utica Lane
Angels Camp, CA 95222

ENGINEER OF RECORD:

09.24.24

ISSUE DATE: 09.24.24

DRAWN BY: ZPG

CHECKED BY: RC

SCALE: 1" = 20'

DRAWING: SITE PLAN

PROJECT NO: 23-07.06

SHEET: C2.1 OF: 7