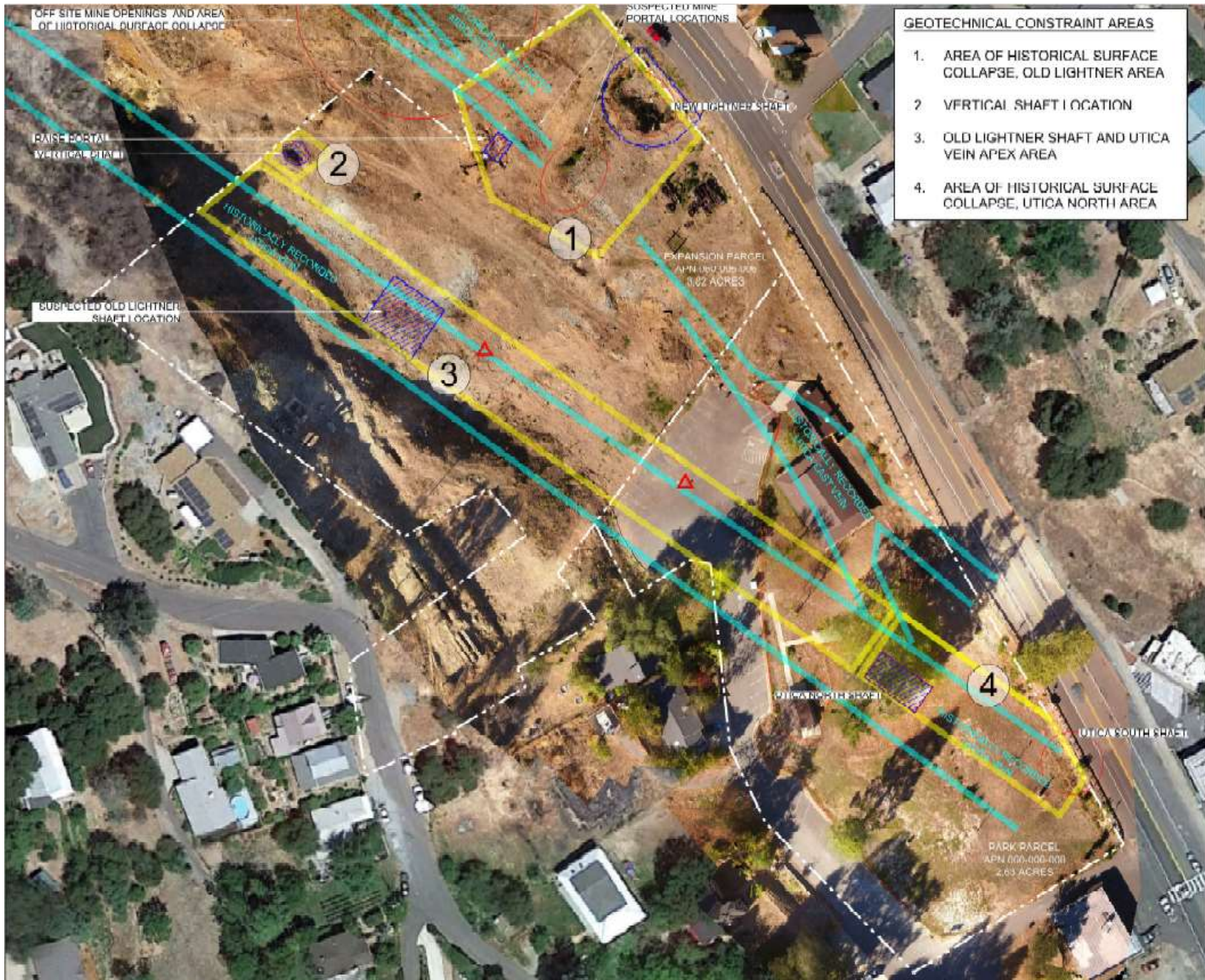


Mine Feature	Exploratory Location Reference (Figure 5)	Constraint Area (Figure 6)	Proposed Mitigation	Approximate Dimensions (feet)
New Lightner Shaft Portal	n/a	1	Fence	50 x 60
Raise Portal	T24-07	1	Plug	8 x 10
Vertical Shaft Portal	T24-04	2	Plug	20 x 25
Old Lightner Shaft Portal	T24-01	3	Slab	50 x 50
Utica North Shaft Portal	n/a	4	Slab	25 x 50

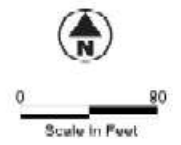
Utica/Lightner Mine Shaft Remediation



- GEO TECHNICAL CONSTRAINT AREAS**
1. AREA OF HISTORICAL SURFACE COLLAPSE, OLD LIGHTNER AREA
 2. VERTICAL SHAFT LOCATION
 3. OLD LIGHTNER SHAFT AND UTICA VEIN APEX AREA
 4. AREA OF HISTORICAL SURFACE COLLAPSE, UTICA NORTH AREA

LEGEND:

- PARCEL BOUNDARY
- LOCATION OF GROUND SUBSIDENCE
- MINE FEATURE
- HISTORICALLY RECORDED BOUNDARY OF GOLD BEARING ZONE
- GEO TECHNICAL CONSTRAINT AREA
- PROPOSED FENCE
- PROPOSED CONCRETE CAP / PLUG

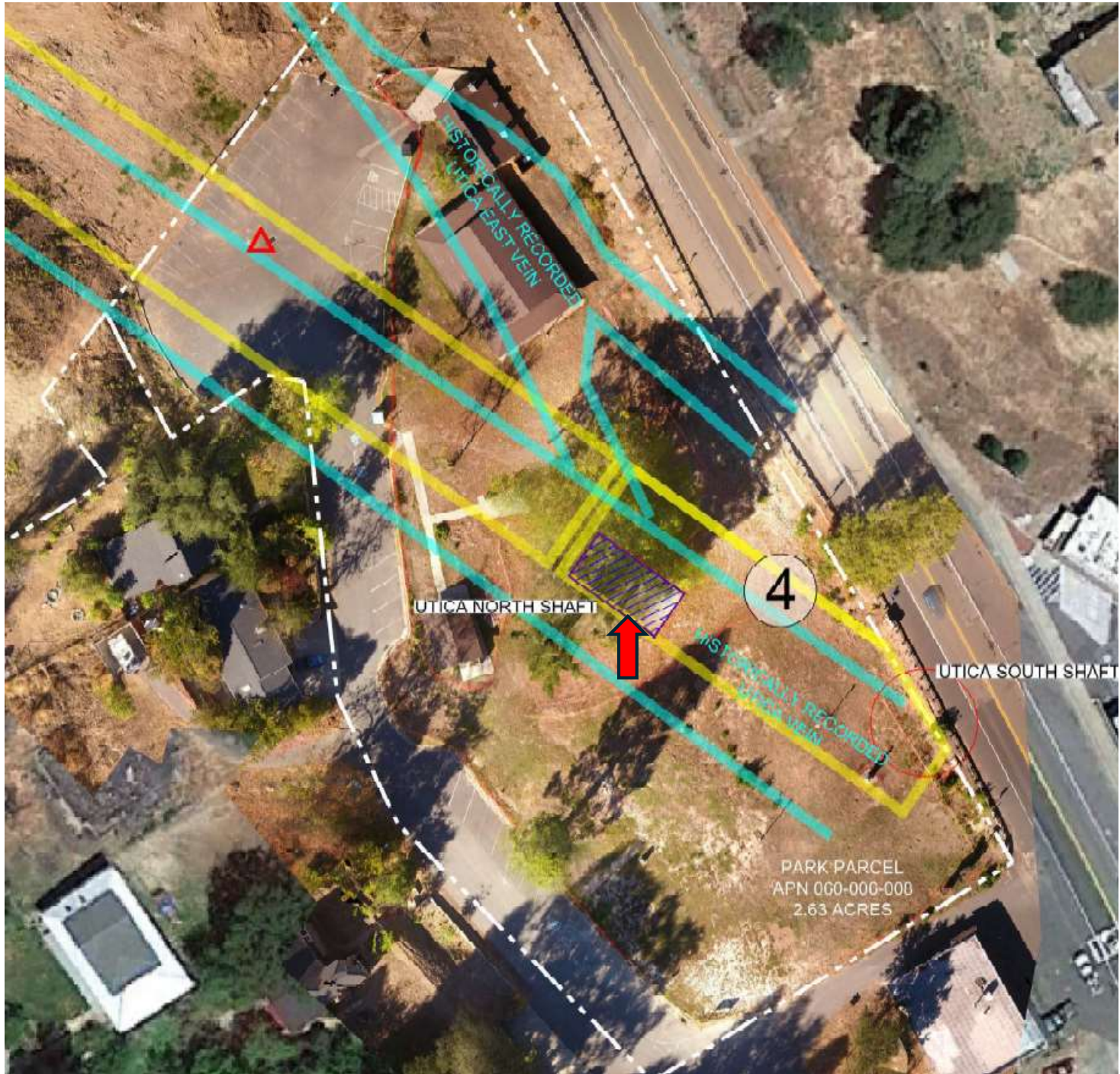


Drone aerial photo mosaic prepared by Boyer Construction. Map scale is approximate. Boundary and feature locations were not determined by survey and are not to be relied upon for construction. Features must be identified and surveyed in the field.

GEOCON
 CONSULTANTS, INC.
 3160 GOLIAD VALLEY DRIVE, SUITE 800, RANCHO CORDOVA, CA 95749
 PHONE: 916.852.9118 - FAX: 916.852.9192

Utica Park Expansion Project
 Angels Camp,
 California

GEO TECHNICAL CONSTRAINTS



UTICA (Existing Park)

Slab: over existing slab
(north shaft)

Roles



GEOCON - CAP DESIGN
AND ON-SITE
MONITORING



LAND AND STRUCTURE -
SLAB DESIGN



BOYER - CAPPING AND
SLAB CONSTRUCTION