

MRB | *group*



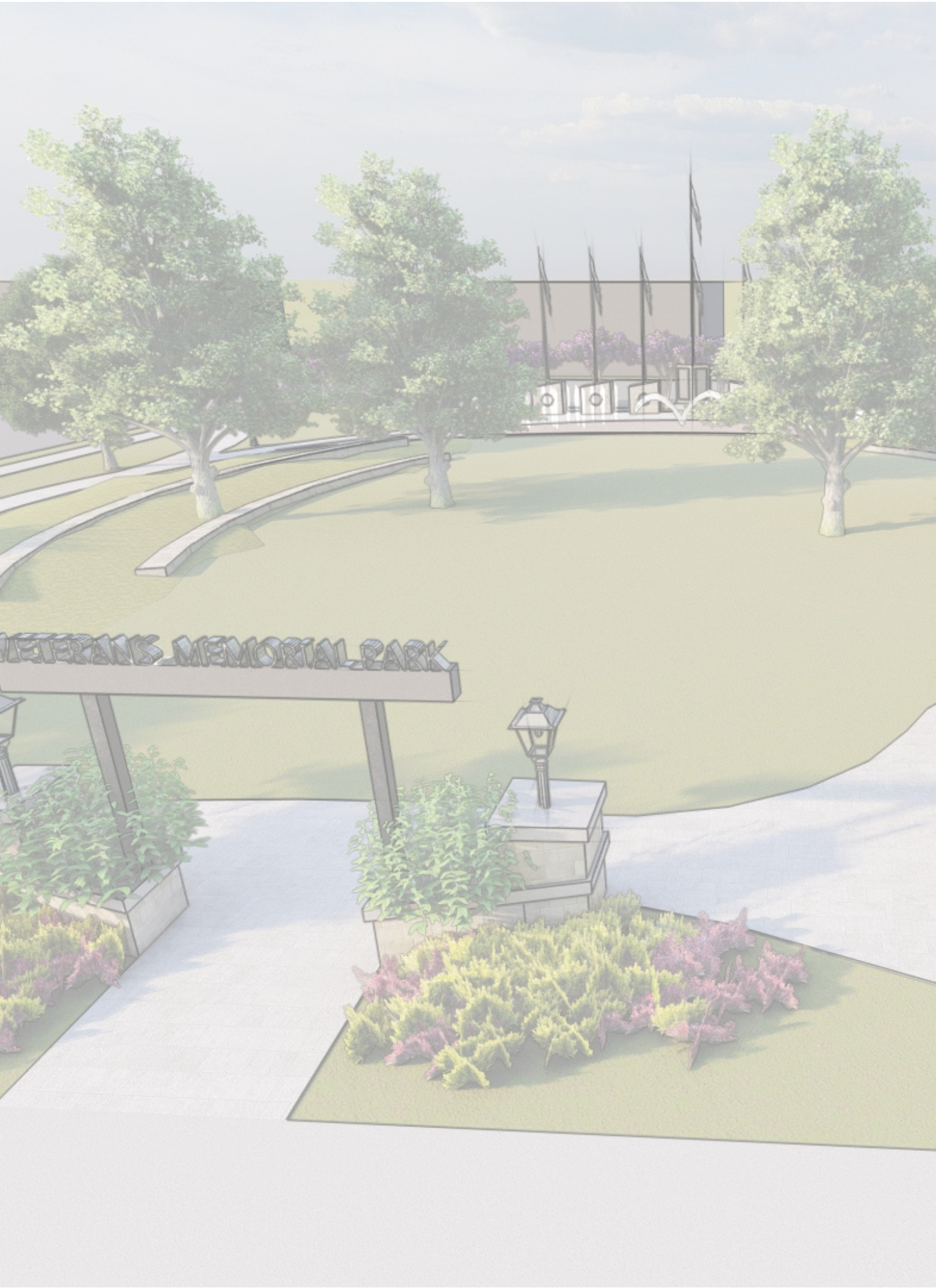
STATEMENT OF QUALIFICATIONS FOR

Veterans Park Renovations
NO. P-202112

February 1, 2022

Table of Contents

SECTION A Cover Letter	Pages 1 - 2
SECTION B Project Team.....	Pages 3 - 8
SECTION C Firm Capabilities	Page 9
SECTION D Prior Experience	Pages 10 - 13
SECTION E Project Approach	Pages 14 - 16
SECTION F References	Page 17



February 1, 2022

Ms. Frances Aguilar, TRMC MMC
Office of the City Secretary
City of Angleton
121 S. Velasco
Angleton, TX 77515

RE: RFQ NO P-202112 – CITY OF ANGLETON VETERANS PARK RENOVATION

Dear Ms. Aguilar:

MRB Group is pleased to submit our Statement of Qualifications to the City of Angleton for the Veterans Park renovations.

We Understand Your Needs.

By working with us, you will add a partner to your team who understands the requirements for this project to include: community needs assessments; park planning and design; construction document development and bidding; and construction administration. **MRB Group provided the City with the concept designs included in this RFQ.** We will work seamlessly together across all disciplines to give the City of Angleton the benefit of *multi-service integration* with an approach that is as innovative as it is practical. We have the manpower and resources necessary to get the job done. We understand that there are unique aspects to every client and every project. We tap into our expertise to balance those distinct characteristics with project parameters.

Experienced Professionals and Consultants

Our in-house professional Architects and Engineers bring an in-depth understanding of the need to create an environment that promotes community. We are committed to making your project a success. The MRB Group staff has over 30 years of inclusive and complementary site development and park design projects. For over a decade, the Brent Luck Architectural Landscaping team has provided park planning and landscape architecture services to public sector entities. Brent's professional passion is serving the public sector and its outdoor landscape architectural needs.

Our Qualifications

In addition to award-winning Architects and Engineers, MRB Group brings seasoned Construction Observers, Site Planners, and Survey Technicians. The majority of our work comes from the repeat business of our many satisfied, long-term clients. MRB Group and Brent Luck Landscaping take great pride in our relationships with our clients and work exceptionally well in a collaborative environment.



Ms. Frances Aguilar, TRMC MMC
Office of the City Secretary
City of Angleton

RE: RFQ NO P-202112 –
CITY OF ANGLETON VETERANS PARK RENOVATION
February 1, 2022

Project Management and Primary Contact

Tanya Reed, AIA, is a Senior Architect and will lead the design and consultant team as MRB's Southwest Architectural Manager. She is a native Texan and has a solid reputation for focusing on precise solutions to carefully match intended purposes and results, providing sound professional architecture and design services. Tanya brings her extensive knowledge of codes and design standards to every project and has an inherent ability to maximize every project's potential.

As a Senior Project Manager, **Anthony D. Beach, PE, CFM**, will lead the Engineering team. Tony has over 25 years of experience providing civil engineering, site development, and construction administration critical to ensuring that communities get the most from their construction dollars. In addition, Tony is a Certified Floodplain Manager and serves as the City Engineer for several MRB clients.

Our entire team commits our availability and the resources necessary to ensure that this project is a success. Should you have any questions, please contact us. We look forward to your favorable consideration.

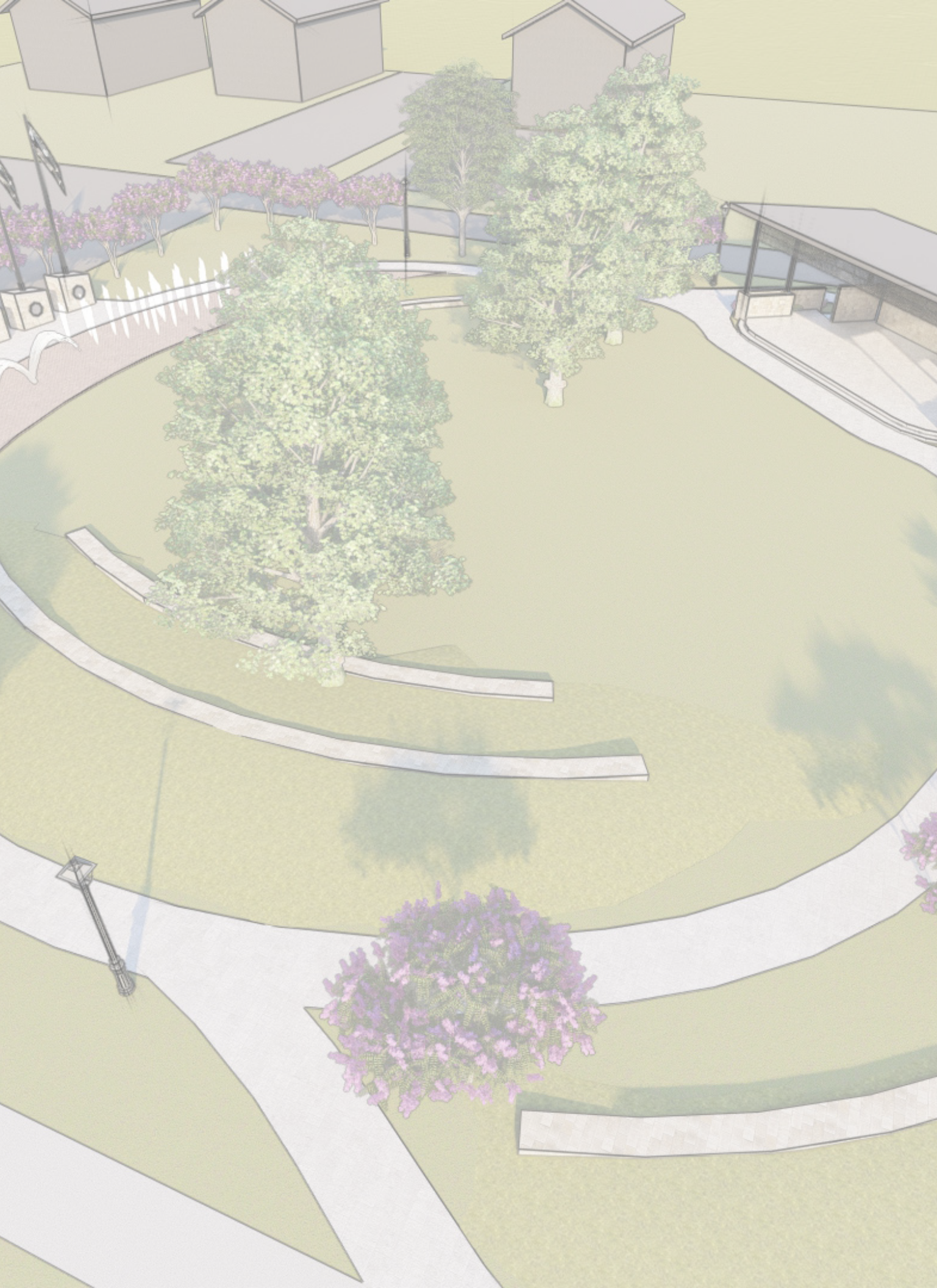
Sincerely,

A blue ink signature of Tanya Reed, featuring a stylized 'T' and 'R'.

Tanya Reed, AIA
Project Manager, Client Contact
V.P. of Architecture

A blue ink signature of Anthony D. Beach, written in a cursive style.

Anthony D. Beach, P.E., CFM
Senior Engineer



SECTION B | Project Team

Qualifications and Relevant Individual Experience

The MRB Group team of architects, engineers, planning experts, and consultants comprise a support staff ready to serve the City of Angleton in any capacity needed.



Tanya Reed, AIA, will serve as the Project Manager and Client Contact. As a business leader and design professional, Tanya brings extensive community planning and consensus-building expertise. In addition, Tanya is a dynamic, action- and results-oriented individual whose civic engagement lends a unique perspective on programming the built environment and has demonstrable success in creating practical, implementable, and sustainable architectural designs.

Tanya's relevant experience includes:

- **Temple**

Multiple projects for the Parks & Recreation Department, Santa Fe Depot; ADA Adaptation and Caboose Renovation, Crossroads Recreational and Athletic Complex, Shaker's Outdoor Family Fun Park

- **Harker Heights**

Purser Park, Soccer and Softball Complexes, Comanche Gap Visitor's Center



Crystal Cowen, AIA, will serve on the Architectural team. A design professional with more than 15 years of experience in architecture, Crystal creates practical, implementable, and sustainable designs, from master planning to conceptual design, construction documentation, and construction administration while providing strong project leadership. In addition, Crystal provides purposeful attention to detail to create pleasing design aesthetics that incorporate and maintain the client's wishes.

Crystal's relevant experience includes:

- **Angleton**

Renderings for the Veteran's Park Renovations

- **Temple**

MRB Group Outdoor Employee area design, Shaker's Outdoor Family Funpark Expansion master site design and development of amenities, including cabana, pavilion, batting cages, and go-cart track, multiple projects for the Parks & Recreation Department, Crossroads Multi-Purpose Sports Complex restrooms and concessions, Wiseman Park concessions and restroom building, Sammon's Community Center renovations

- **Harker Heights**

Multiple projects for the Parks and Recreation Dept, Purser Park concessions and restroom buildings, Goode-Connell Park restrooms and shade structure, Comanche Gap Visitor's Center



Anthony D. Beach, P.E., CFM, will serve as the Lead Engineer. Tony brings over 35 years of professional experience as an accomplished design engineer with in-depth knowledge of every aspect of public infrastructure and service delivery in local government and private utilities. In addition, his years of project management and engineering design provide excellent team leadership in water resource development and transportation. Tony is a Certified Floodplain Manager and frequent presenter for the Texas Floodplain Management Association. In addition, he is a former instructor in Autodesk Civil 3D /

SECTION B | Project Team

engineering technology at Temple College and twice the keynote speaker for Global Mapper. This international organization promotes the use of GIS technology.

Tony's relevant experience includes:

- **Troy**
Troy Splash Pad design, City-Wide Parks Master Plan
- **Killeen**
Condor Park Improvements
- **Copperas Cove**
City Parks Master Plan, 10 Capital Improvement Projects throughout the City.
- **Waco**
Cameron Park Trails scenic overlooks and multiple pavilions, Bledsoe-Miller Park pavilions and trails, Brazos Park East restroom facilities and trail extension.
- **Rockdale**
Sumuel Park improvements and splash pad



Jordan Everhart, AICP, PMP, will serve as the Planning and Stakeholder Liaison. Jordan is a cross-trained planning professional with over 18 years of experience working with municipalities and public agencies, leading and supporting planning and engineering projects. His extensive roadway and transportation planning experience includes corridor and feasibility studies, multimodal corridor evaluations, master planning, and alternatives analyses.

Jordan has exceptional skills in crucial project coordination to expedite agency approvals, inform community leadership, and foster public engagement to involve all community stakeholders effectively. In addition, he has a proven track record for formulating and executing implementation plans to keep projects on track and on budget.

Jordan's relevant experience includes:

- **Ft. Worth**
West 7th Street Complete Street Study & Design, 2018 Transportation Bond Program
- **Rockwall County**
Bicycle Master Plan
- **Denton**
Hickory Creek Road Feasibility Study & Design
- **Amarillo**
Martin Road Playa Improvements
- **Richardson**
East Arapaho Redevelopment Study
- **Austin**
East Riverside Drive Corridor Study for Bicycle Lanes, Pedestrian Improvements, and Passenger Rail
- **Alabama Department of Transportation**
Mobile River Bridge Bicycle & Pedestrian Study
- **Hillsboro**
Pre-Visioning and Community Snapshot, 2022-2027 Strategic Planning
- **Waco**
19th Street and J. H. Hines Elementary Safe Routes to School Property Acquisitions

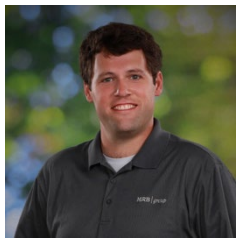
SECTION B | Project Team



Gil Gregory will lead the Construction Administration team. Gil brings extensive experience with project management, hydraulics, hydrology utility design, and ordinance compliance. In addition, Gil has had tremendous success assisting clients during the construction phase of their projects, having served in the capacity of construction superintendent, field inspector, citizen consultant, and project manager on numerous projects of different types, sizes, and complexity.

Gil's relevant experience includes:

- **UMHB, Belton**
Sport Court Relocation
Crusader Stadium
- **Harker Heights**
FM 2410 Community Park, Phases I and II
- **Temple**
Lion's Park Swimming Pool Evaluation



Steven Kirkpatrick, P.E., will lead the Site Development team and is a senior project manager with significant experience planning and completing municipal transportation, water and wastewater, drainage, and infrastructure projects, as well as institutional capital projects, including medical and healthcare facilities. He has a strong familiarity with all aspects of project management, from site evaluation and feasibility studies to planning, budgeting, engineering design, coordination of bidding processes and preparation of documentation, construction administration, and support for project reimbursement through funding agencies.

Steven's relevant experience includes:

- **Waco**
Trail Blazer Park Improvements
- **Buffalo**
Downtown Revitalization Program and Sidewalks
- **Granger**
Safe Routes to School Sidewalks and Walkways
- **Rockdale**
Highway 79 and Downtown Improvement Project
- **Troy**
Safe Routes to School Sidewalks and Walkways
- **Hillsboro**
Safe Routes to School Sidewalks and Walkways



Michael McBride, P.E., will serve as the Lead Structural Engineer, bringing over 40 years of professional experience as an accomplished structural design engineer, project manager, and workgroup/team leader. His project management and design engineering expertise include rehabilitation and new construction of facilities and community infrastructure, from wastewater treatment and bridge construction to engineering design for marine structures, high-rise residential buildings, parking garages, auditoriums, and convention facilities.

Mike's relevant experience includes:

SECTION B | Project Team

- **Project Manager/Team Leader** for multiple civil projects including office buildings, municipal/commercial/institutional facilities, and custom residential.
- **Extensive structural renovation** experience for retail facilities, concrete high-rise buildings, design of foundations, columns, shear walls, and post-tension slabs.
- **Design of structural steel** for a long-span auditorium and convention facilities.

Unique Knowledge Related to this Project

With her collaboration as Project Manager/Client Liaison to the City of Angleton on numerous projects, Tanya Reed has first-hand knowledge of the City's intent for renovations to Veteran's Park. In addition, Crystal Cowen has a formal understanding of this project, as she prepared the renderings for the Veteran's Park renovations that are a part of this Request for Qualifications.

Experience on Projects as a Team

As architecture, engineering, and planning experts, the MRB Group team currently assists more than 150 communities in varied locations. Our licensed architects/designers, engineers, planners, and operators provide a comprehensive range of professional services to municipal, county, commercial, and not-for-profit clients in a range of fields, including architecture, civil and structural engineering; site development, construction administration, master planning, GIS, mapping services, legal and environmental review/documentation, regulatory compliance and environmental monitoring, municipal code revision and compliance, and efficiency initiatives. Our team will work seamlessly together across all disciplines to provide the City of Angleton the **benefit of multi-service integration** with an approach that is as innovative as it is practical.

Over 125 respected professionals and support staff work closely with our clients, **providing trusted counsel and excellence in architecture and engineering**. When specific expertise is required, we work with qualified specialists who further enhance our team's capability.



MRB Group's expertise helps **enhance operational efficiencies and minimize costs. Our team has 90+ years of direct experience in municipal operations, both in the field and planning and design stages.** We've dealt first-hand with the challenges of maintaining and improving old and often insufficient facilities, day-to-day operations, regulatory compliance and approvals, and project-specific issues like site geography, invasive species, and threatened/endangered species. Most importantly, our vast experience with municipal and county projects and planning services provides critical insight into making projects affordable, budgeting, project management, and regulatory approval processes.

Project Management and On-Site Presence

The City of Angleton will play an essential part during the design phase and the project's design process by providing design reviews and critiques. Design and cost information will be provided at every review meeting with the City, providing an opportunity for informed decision-making. With the safety and security of staff and visitors being critical components of the project, our expertise in this type of municipal project allows us to be proactive. Our team will ensure adherence to the required specifications and other disciplines in coordination with architecture and specialty disciplines.

SECTION B | Project Team

- **Schedule** - Schedule production and management will begin at the project's inception. As the project progresses, the entire team will constantly assess the project's goals for schedule, budget, design, quality, etc.
- **Quality Control** – Our team delivery approach, "Integrated Project Delivery," ensures all team members are aware of each other's progress and any impending decisions or issues at all times. Quality control is not occurring only at established milestones — instead, it is a constant, proactive endeavor to provide quality assurance.

We will promptly respond to the needs of the City. With the local representation of MRB architects, civil engineers, and structural engineers, we can meet and observe as required and promptly respond during other critical construction milestones. We cannot emphasize enough that for these reasons, we believe that we have compiled the best design and construction administration team to serve the City of Angleton with this project.

Time Commitment of Key Staff

As you can see by the number of staff members below, MRB Group has the capacity and availability within our workload to be available for this project. As the project commands, our full staff of professional architects, engineers, planners, and support personnel from the Temple, Waco, and Austin MRB Group offices will be available full-time or part-time.

- Architects (9)
- Engineering/Hydrology (50)
- Planning (10)
- Site Development (5)
- Surveying (2)
- Construction Observation (13)

Qualifications and Relevant Sub-Consultant Experience

Luck Design Team Landscape Architect As a lead landscape designer, Luck Design has vast experience leading or partnering with multidisciplinary project teams. The Luck Design Team provides traditional planting and irrigation design associated with landscape architecture and partners to manage and lead complete improvements and coordinate project disciplines that might be required. Therefore, it is essential to have a firm that understands the project process: from due diligence public consensus building through visualization and graphics to the design bid build aspect of the project.

Luck Design Team's relevant experience includes:

- **New Braunfels**
Veterans Memorial Improvements
- **Boerne**
Veterans Plaza Renovation
Waterworks Terrace Park Master Plan
- **Universal City**
Veterans Park Improvements
- **San Marcos**
Veterans Park Improvements
El Camino Real Park
Dunbar Park
- **Midland**
Hogan Park Improvements
Scharbauer Sports Complex
- **Victoria**
Duck Pond Park Renovations

SECTION B | Project Team

Cen-Tex Engineering MEP Engineering Founded in 2009, Cen-Tex Engineering focuses on providing Mechanical, Electrical, and Plumbing design services for all of Texas and surrounding states. Cen-Tex currently has a staff of 6 design professionals with a cumulative experience of over 90 years and has obtained significant design experience in both the private and public sectors with project construction costs ranging from \$25,000 to \$35,000,000.

Since its inception, Cen-Tex Engineering has completed over 300 projects for commercial, governmental, institutional, K-12, higher education, restaurants, manufacturing, religious centers, data centers, and numerous other segments.

Cen-Tex is proud to provide Principal involvement, and analysis of emerging technologies, tempered with their client's individual needs to meet operational and budgetary goals.

Cen-Tex Engineering's relevant experience includes:

- **Angleton**

- Wastewater Treatment Plant Renovation

- **Temple**

- Recycling/Transfer Center
- Draughon -Miller Central Texas Regional Airport Fixed Base Operations (FBO) and Aircraft Rescue and Firefighting (ARFF) Design
- First Street Parking Garage
- Fourth Street Parking Garage
- Mercer Softball Complex
- CFP (MLK) Community Center
- City Maintenance Center
- Fire Station #3 Renovation

- **Killeen**

- Fort Hood Regional Airport Terminal Expansion
- Fire Station #1 Mechanical Renovation

- **Harker Heights**

- Fire Station #1 Renovation

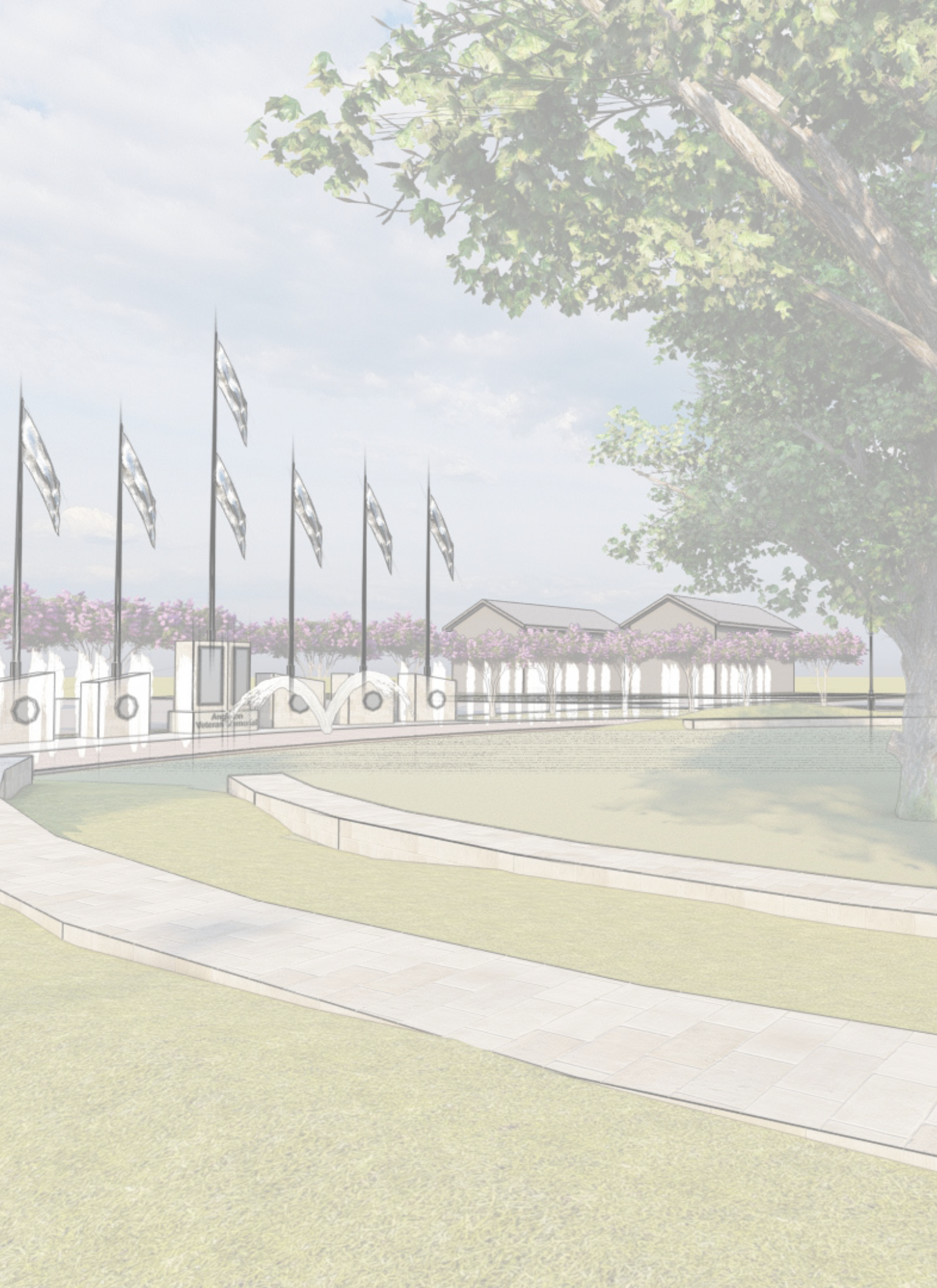
- **Bell County**

- Killeen Juvenile Sewer Replacement
- Belton Emergency Dispatch
- Killeen Annex Mechanical Renovation

- **Hill County**

- Hillsboro Annex Renovation
- Hillsboro Agri-Life Building

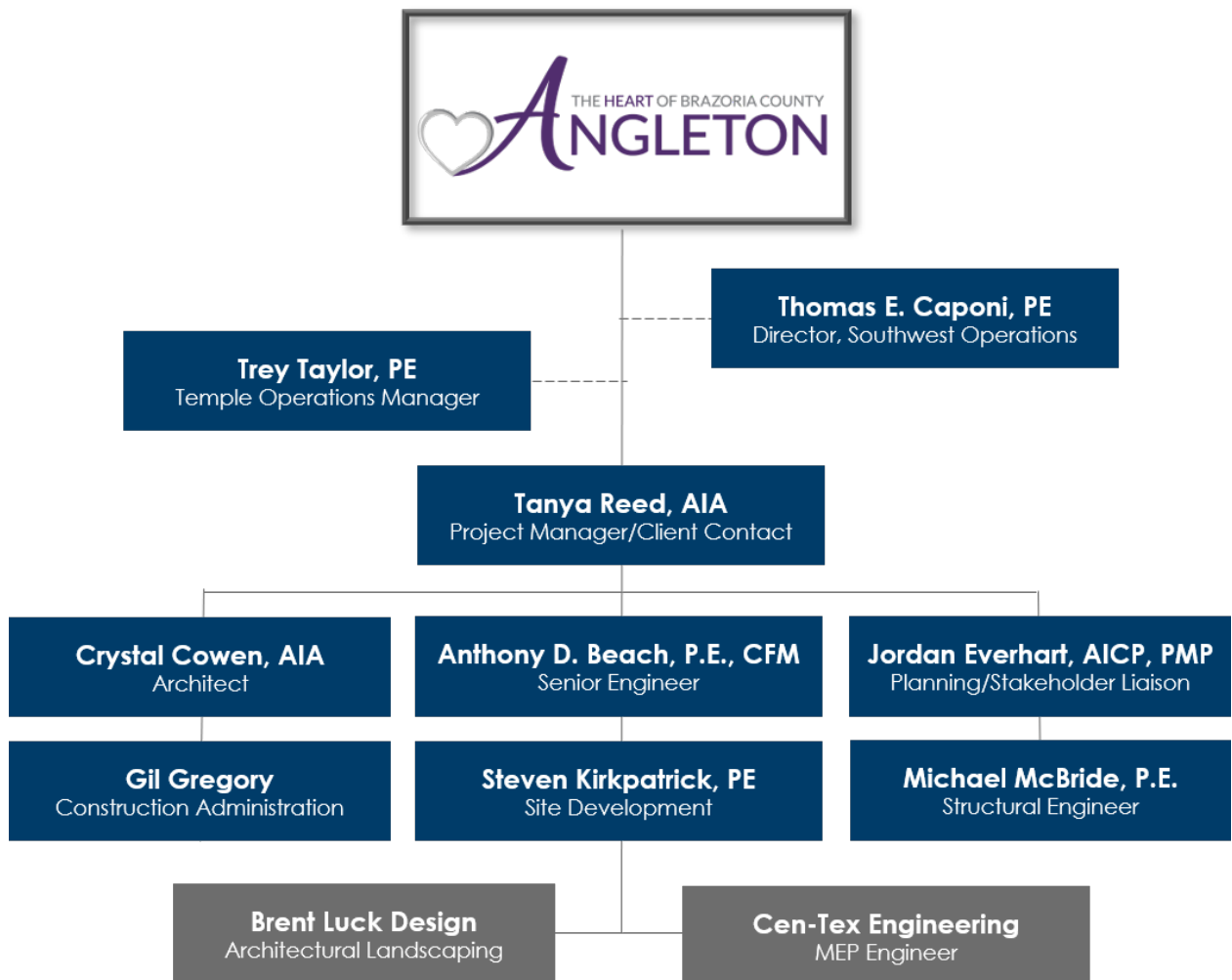




SECTION C | Firm Capabilities

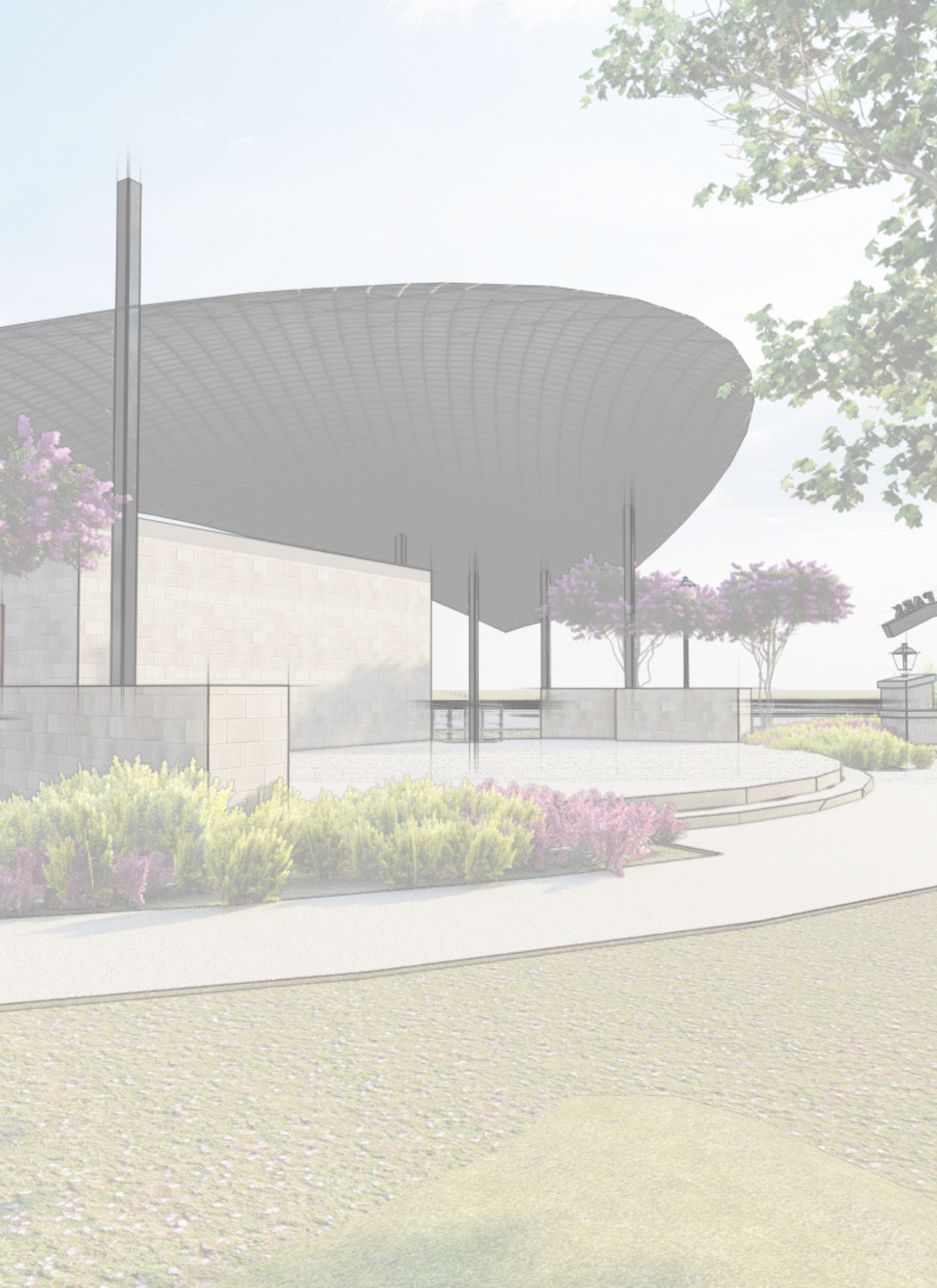
Lines of Authority and Essential Management

The management team will assemble the project team to respond to specific project needs. At MRB Group, our architects, engineers, planning experts, construction administration specialists, and consultants comprise a support staff ready to serve the City in any capacity needed. Below is an organizational chart that depicts the Temple MRB Group team assigned to the City of Angleton.



Current and Projected Workload

Our entire team commits our availability and full resources necessary to ensure that this project is a success. Since MRB Group specializes in municipal architecture and engineering design, it is essential to have an efficient process that can accommodate a constantly evolving workload. As some projects move to completion, new ones are getting started to take their place. To do this, we have developed a client-studio organizational approach to manage projects and workload properly. With this approach, a Team Leader manages a studio of clients and cross-functional technical resources that are shared across other in-house studios as needed to meet client demand. Therefore, we've allowed for efficient manpower distribution so that each team member can be working on more than one project at once.



SECTION D | Prior Experience

MRB Group provides complete architecture and engineering services with a wide range of expertise. More importantly, our goal is to protect the interests of our clients and help them contain costs. From needs assessments, system design, and construction phase services to serving in an advisory capacity, the MRB Group team helps our clients provide community services and protect critical assets.

The following projects include narratives from several representative MRB Group projects, specifically architecture, engineering, planning, and site development. Other services that may have been included, but are not limited to: structural engineering, sidewalks and roads; ADA-compliance; and drainage and stormwater.

Veterans Park | City of Angleton



Under its General Services agreement, MRB Group provided the City of Angleton with design renderings for the renovation of Veterans Park. Amenities included in the renderings are a water feature, upgraded seating, upgraded veteran monument, green space, vegetation, park signage, and a lighted pavilion/amphitheater structure with restrooms and storage.

Crossroads Park | City of Temple

The City of Temple, as a part of its 2015 Parks Bond, approved the design and construction of a 300+ acre community park located at Research Parkway and Prairie View in West Temple. The overall estimated cost of the project was \$11.2 million. The complete build-out includes:

Amphitheatre	Baseball/Softball/Soccer Fields
Pavilions	Volleyball/Basketball Courts
Playground	Recreation Center
Splash Pad/Water Park	Tennis Complex
Open Play Area	Skate Park
Restroom Facilities	Lake with Fishing Pier
Dog Park	Practice Fields

The MRB architectural team were the lead architects in collaboration with civil engineers KPA and other design professionals.

Phase I was inclusive of all the site construction, infrastructure for the park, and the required detention pond. Phase II design was completed in late 2017.



SECTION D | Prior Experience

Pugh Park | Tom Green County

MRB Group was hired to submit a Trail Grant Application to the Texas Parks and Wildlife Department for Harper and Pugh Parks in Tom Green County.

Texas Parks and Wildlife approved \$400,000 for Pugh Park, with an additional \$200,000 for a Trail Grant. The County matched the grant funds with private donations and "in-kind" services.



MRB Group designers prepared a Master Plan and conceptual designs to present to the residents for fundraising and delineation to the Commissioners. This scope for Pugh Park included the construction of two new playing fields, one baseball and one softball field, new concessions, restrooms, and bleachers to serve the playing fields. In addition, the design and construction included six new fitness stations along the trail, a new nature trail, a hike-and-bike trail, and all new underground utilities.

Pugh Park, also known as River Park in Christoval, is located on Ranch Road 2084 (Toenail Trail) across from the High School and is situated at the southeast edge of the community of Christoval. Tom Green County operates the park.

Shakers Backyard | Spare Time, Temple



MRB Group was contracted by Spare Time of Texas to provide architectural and engineering services to design the outdoor recreation expansion at its current location in Temple. The estimated \$5 million development called Shakers Backyard included expansion services on the west side of the existing structure towards Kegley Drive.



The Architectural expansion included a six (6) stall batting cage, a "ropes course," a go-cart track, and two (2) sand volleyball courts. In addition to these recreational amenities, MRB designed a freestanding bar and seating area that includes full kitchen access. The design also includes two additional open-air buildings structures; a freestanding pavilion and a shade structure at the batting cage area. The facility expansion also includes site restrooms. MRB staff engineers worked on the site to ensure a flow of drives, paths, and walkways. Circulation was an essential part of this project, so our engineers prioritized this in their design. We also provided a preliminary landscaping plan in accordance with the City of Temple's UDC.



Coordination between the MRB team, the Client, and the independent vendors for specific design components and the dimensional guidelines for each proposed park feature was crucial.

SECTION D | Prior Experience

Trail Blazer Park | City of Waco

Trail Blazer Park is an 11-acre neighborhood park in Waco's West Highway 84 corridor. With funding from the City of Waco capital improvement budget, MRB Group provided design services for:

- Playground with shade structure
- Security lighting for playground and trail
- Trail extension to new neighborhood development
- Covered pavilion with picnic tables and BBQ grills
- Bicycle repair station
- Drinking fountain with pet bowl
- Benches on existing trail
- Water and sewer services for future amenities

Note: Due to construction costs being less than the budgeted amount, the City was able to construct additional improvements, further enhancing Trail Blazer Park. These are included in the above.

MRB Group also prepared a Master Plan for the City to communicate their plans to the public for adding amenities to the park as funding becomes available.



Parks and Recreation Master Plan | City of Cameron

MRB Group worked with the City of Cameron to develop a fluid Parks and Recreation Master Plan that guided the development and acquisition of new parkland and recreational facilities. This Plan examined existing park and recreation spaces and facilities to identify issues related to present and future community needs and made recommendations on how the City of Cameron's park and recreation facilities could be integrated into a cohesive system. The Plan evaluated existing facilities, identified areas where parks needed to be developed, and established facility criteria and standards. In addition, it provided a comparative analysis of the City's park system to accepted park standards and identified park-related issues that the City will need to address in the short and long term. The parks included in the Master Plan:



Airport Park Complex – Cameron Park
City Park
OJ Thomas Park
Orchard Park

The Yards
West 12th Street Park
Williams Event Center
Wilson Ledbetter Park

SECTION D | Prior Experience

Various City Parks | **City of Harker Heights**



The engineering and architecture staff at MRB Group were the design professionals on multiple parks projects for the City of Harker Heights Parks Department, including Harker Heights Community Park, Purser Park, Summit Park, and Goode-Connell Park.

The projects included public trails, facilities, restrooms, parks, and playgrounds. These are multi-acre complexes with both internal sidewalks and trails and sidewalks on the perimeter of the parks that tie into residential neighborhoods and public transportation.



The projects ranged in scope and complexity, but all required extension walking trails and sidewalks. MRB Group staff successfully created a labyrinth of walks that met the needs of the City for casual use, as well as maximum usage during tournaments and organized play. The walks were installed in all cases to meet ADA requirements and exceed minimum design standards for walks.



Topography was one challenging aspect of some of these projects, and the attention to the drainage detail was paramount.

Parks Capital Improvement Program | **City of Copperas Cove**



The City of Copperas Cove engaged MRB Group to assist in the planning, design, bidding, and construction administration for a 5-year Parks Department Capital Improvements Program (CIP). This ambitious program was to in some way touch each of the City's eight individual public parks.

Phase 1 project consisted of providing ten new or refurbished asphalt parking lots with curb and gutter, ADA-compliant parking spaces and curb ramps, generous 6-foot wide sidewalks, limestone block retaining walls, access control gates for emergency vehicles, and in one location, electric hook-ups for vendors and food trucks during seasonal festivals.





SECTION E | Project Approach

Scope of Work and Approach Methodology

Project Kick-Off Meeting | The Project Team will facilitate a Project Scoping Kick-off Meeting with the City. We will review the project's scope, the major deliverables, milestones, and project schedule at this meeting and confirm the community engagement strategies. In addition, we will ensure that the overall project objectives are consistent and understood by all of the involved parties before commencing work. Finally, we will prepare the minutes from the project kick-off meeting and all meetings throughout the project's life.

Community Engagement | We believe that impactful designs are created from a foundation of authentic, meaningful public engagement and community participation. As such, our Project Team is committed to a set of tailored community engagement exercises and platforms, leveraging best practices while providing the channels and processes that best fit with local engagement appetites.

To ensure meaningful and broad engagement through the project's design phase, we will work with the City at the project's kick-off to develop a **Public Engagement Plan**, identifying key stakeholders, targeted milestones, and workshop and meeting dates. ***The Public Engagement Plan is intended to serve as a guide throughout the project's life-cycle and may be amended and updated as additional project needs are identified.***

With the approval of the City, our team will take advantage of a full range of digital and in-person engagement tools. Specific tools will include:

- **Instant Input Platform** | This is a downloadable app that will allow the public to provide ***instant feedback on the park's design and construction phases*** at any time. Available to the community 24/7, the platform uses push notifications to provide the public with project information, schedules, meeting dates, and deliverables.
- **Community Survey** | Our team will develop and administer an online community survey early on in the process to solicit feedback from the broader Angleton community on needs and opportunities specifically for Veterans Park. The City can distribute the survey through its website and social media channels to reach participants. The survey will also be made available directly through the ***Instant Input Platform***.
- **Community and Neighborhood Meetings** | ***Community and neighborhood meetings foster an intimate environment that encourages the exchange of ideas and input.*** Our workshops are entirely interactive. We invite residents and stakeholders to "roll up their sleeves," engaging directly in the design process.

Meetings and workshops are typically held in a series to make the best use of the City's and community's time. The number of workshops, and their timing, will vary based on the City's needs and recommendations.

The **Needs Assessment** phase of the meeting series will focus on understanding the community's needs and vision for the park. We will use a series of community-engaging "stations" to gather information focused on:

SECTION E | Project Approach

- Design elements such as lighting, sidewalks, amenities, and the types of uses.
- Environmental factors such as safety, walkability, and access barriers.
- How does the community currently use the park?
- How will the community envision future use of the park?

In addition, we will provide opportunities for the community to design a park of their own to express their ideas visually.

During the **Schematic Design** phase, the Project Team will present conceptual park designs and engage the public to provide feedback on the concepts.

Schematic Design | Prepare a preliminary code review for the project. This phase defines the project's design elements and estimates the construction costs and the schedule. The objective of this phase is to define the project in sufficient detail to move into the Detailed Design phase efficiently. Implementing an accurate and meaningful budget methodology and cost control will be critical. In addition, we will prepare conceptual designs and renderings during this phase.

Design Development | After we receive the approval and notice to proceed from the City, the design team will prepare another set of review documents in the Design Development phase based on the concepts presented in the Schematic phase. These documents will unveil necessary details and material selections pertinent to determining the scope. In addition, geotechnical information will be in hand at this point, and the soils and subsurface data will begin to affect the detailing of the project.

Construction Documents | Minimal decisions regarding the final product will occur after the Detailed Design phase. The design team will prepare construction and Bid Documents and Specifications.

MRB Group prides itself in putting forth our best effort to meet the client's objectives and deadlines. Once we have answered all questions, a timeline created, and the project has commenced, the timeline becomes etched in stone. Unless there are issues or scope changes out of the design team's control, you can guarantee that the timeline will be met and the City of Angleton will have the deliverables in hand on the date promised.

Bid Administration | MRB Group will assist the City of Angleton in the bidding process at the City's desired level. At a minimum, our design team will prepare the Bid Documents in a PDF document, and we will prepare hardcopy formats for distribution to potential bidders. We will host a Pre-Bid meeting for interested General Contractors and field questions about the design and items related to the construction process. Our design team will field all Requests for Information (RFIs) and issue addenda as required.

Construction Administration Services | MRB Group standard Construction Administration (CA) duties include the following:

- Weekly or bi-weekly progress meetings,
- Progress Reports submitted to City Staff,
- Council Presentations as required,
- Process Pay-Apps and Change Orders as required,
- Provide Clarification on contract documents as required.

SECTION E | Project Approach

MRB Group has an extensive Construction Observation team that often contracts with municipalities to act as the owner's representative during the construction phase. These services are unique to a design firm, and we can tailor them to meet the City's needs. Our Construction Observation team has many projects that require four to eight hours a day of on-site supervision. After selecting the design firm, MRB Group would be very interested in introducing that team to you and explaining the inherent benefits of that service.





SECTION F | References

MRB Group is exceptionally proud of our relationships with our clients. This exceptional rapport is demonstrated by the fact that many of our municipal, county, and utility clients are repeat customers.

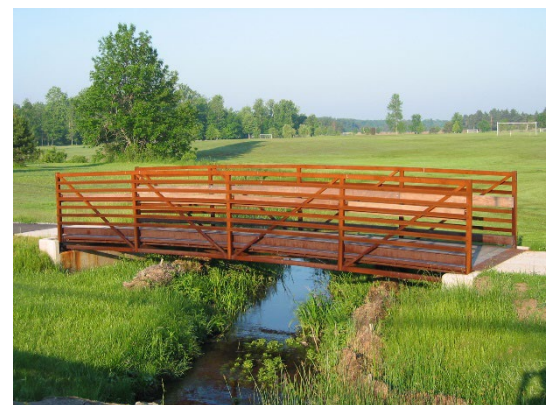
Thomas Balk, PLA
Park Development Program Manager
City of Waco
7801 Steinbeck Bend Drive
Waco, TX 76708
254-750-8471
tomb@wacotx.gov

Belinda Mattke
Director of Purchasing
City of Temple
3210 E. Ave H, Bldg. C
Temple, TX 76501
254-298-5655
bmattke@templetx.gov

Ryan Haverlah
City Manager
City of Copperas Cove
914 S. Main Street, Suite D
Copperas Cove, TX 76522
254-547-4221
rhaverlah@copperascovetx.gov

Joe Brown, Exec. Dir., Recreation Services
City of Killeen
101 N. College St.
Killeen, TX 76541
254-501-6390
jbrown@killeentexas.gov

Commissioner Bill Ford
Tom Green County
112 W. Beauregard
San Angelo, TX 76903
325-659-6514
bill.ford@co.tom-green.tx.us





MRB | *group*