

PREPARED FOR



Response to Request for Qualifications

Veterans Park

FOR THE CITY OF ANGLETON

FEBRUARY 1, 2022 | NO. P-202112



PREPARED BY

Kimley»Horn

Table of Contents

PAGE NO.

A. Cover Letter

B. Project Team 1

C. Firm Capabilities 6

D. Prior Experience 10

E. Project Approach 14

F. References 15

G. Appendix

- 1. Resumes
- 2. CIQ Form
- 3. Form 1295
- 4. Addendums



A. Cover Letter

February 1, 2022

Frances Aguilar
121 South Velasco
Office of the City
Secretary
Angleton, Texas 77515

RE:
NO. P-202112:
Request for
Qualifications
for Veteran's
Park
Renovation
for the City of
Angleton

Kimley»Horn

KIMLEY-HORN.COM

281.597.9300

11700 KATY FREEWAY
SUITE 800
HOUSTON, TX 77079

Dear Selection Committee Members:

Kimley-Horn understands that the City of Angleton is seeking a qualified landscape architect firm to aid in the proposed renovations for Veterans Park. Kimley-Horn has prepared a team with the appropriate landscape architecture and engineering skill needed to successfully complete this project. We have teamed with trusted subconsultants to provide additional services that may be required such as: architecture, lighting and MEP, audio visual design, and arbor. In hiring the Kimley-Horn team, Angleton gains the following benefits:



Award-winning design firm. Kimley-Horn has many highly creative and talented landscape architects, engineers, and park planners in Texas and nationwide who have won numerous awards for our special-use parks, sports complexes, aquatic venues, and performance venues. Our local knowledge, along with our large internal network of experience and innovation, is ideally suited for providing the quality and creativity expected by the City on this renovation project.



Local experience and a team invested in Angleton's success. Kimley-Horn's local civil engineers are currently working on the City of Angleton ADA Self Evaluation and Transition Plan and our local landscape architects are currently providing services on the City's Park Standards. We have boots on the ground and local experience that gives us knowledge of City requirements and allows us to better understand the site constraints.



Multidisciplinary in-house services. Your project includes several diverse features that will require a team with a wide range of experience. We have assembled a skilled and diverse team that possesses the right combination of experience and local knowledge that will be required for your project. A cohesive, knowledgeable team leads to design and construction under budget and ahead of schedule. Our team values our relationship with the City, and we want to be your preferred consultant.

Thank you for the opportunity to submit our qualifications for this RFQ. Kimley-Horn is specifically interested in this project and will perform the requirements in the RFQ. We look forward to continuing our working relationship with the City of Angleton. If you have any questions or comments, please contact me directly at 817.339.2277 or john.felder@kimley-horn.com.

Sincerely,

Kimley-Horn and Associates, Inc.

John Fielder, PLA
PROJECT MANAGER/
MAIN POINT-OF-CONTACT

Aaron Rader, P.E.
AUTHORIZED TO BIND THE FIRM

B. Project Team

Kimley»Horn

Kimley-Horn was founded in 1967 and is a multidisciplinary consulting firm composed of landscape architects, planners, and engineers. With over 5,300 employees, Kimley-Horn serves public and private clients from more than 100 offices nationwide, including 16 in the Texas region.

The proposed team members have been selected for their specific expertise and availability to serve the City of Angleton for the duration of this effort. Kimley-Horn's landscape architects and urban planners have varied public sector experience ranging from corridor plans and downtown streetscape programs, to parks and recreation planning. Our planners and landscape architects emphasize the development of a pleasing visual environment, distinctive image, and strong sense of place.

Additionally, the proposed Kimley-Horn team has successfully completed numerous parks, athletic fields, athletic courts, hike and bike trails, bridge designs, playgrounds, lighting, parking lots, spraygrounds, and recreation-oriented projects for federal, state, regional, and local government clients. Our firm offers a full spectrum of landscape architecture, civil engineering, and planning services. Our experience within these services includes, but is not limited to:

- » Parks and Recreation Facility Design
- » Landscape Architecture/Urban Design
- » Wayfinding
- » Accessibility
- » Environmental Design
- » Streetscape/Urban Design
- » Aquatic Planning and Design
- » Site Civil Engineering
- » Transportation Planning and Engineering
- » Parking Planning and Design
- » Utility Design
- » Public Involvement
- » Traffic Engineering (signage and signals)
- » Surveying and Platting

Additionally, we will team with the following subconsultants to provide Angleton with a complete team for this project:



Engineering Associates, Inc. (EAI) *Lighting and MEP*

EAI was established in 2004 and is owned and operated by Jim Weathers and Jim Dallas. The combined staff of EAI offers more than 45 years of experience in the field of mechanical and electrical design for parks and aquatic facilities. EAI is committed to providing superior service in the electrical, mechanical, and plumbing construction industries. Engineering Associates has more than 20 years of experience working with Kimley-Horn.



Wrightson, Johnson, Haddon, & Williams (WJHW) *Audio Visual Design*

Founded in 1990, WJHW, Inc. is a 50+ person firm offering best-in-class services and consulting in audio, visual, video and scoring displays, broadcast provisions and video production, acoustics and noise control, performance lighting and rigging, scoreboard hoisting systems, distributed TV and satellite, video surveillance and access control, and tel/data structured cabling.



Environmental Design, Inc. (EDI) *Arborist*

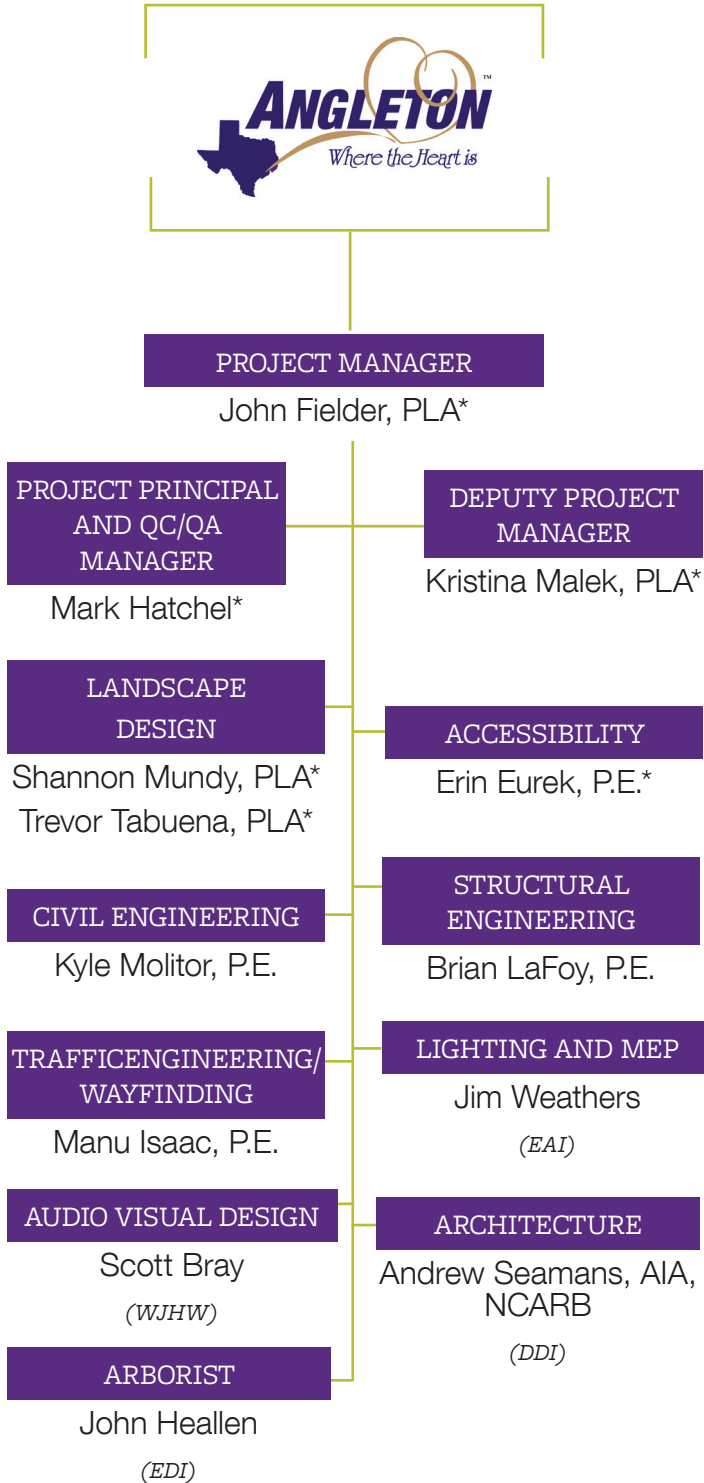
Located in Tomball, EDI has designed, patented, and built the largest hydraulic tree spades in the area. EDI owns and operates a fleet of hydraulic tree spades from 65 inches all the way to 168 inches. They have more experience, over 30 years, and expertise in large tree transplanting than any tree transplanting company in Texas. They are passionate the safety of trees and help clients shape their landscapes with and around the natural beauty of the area. EDI is Kimley-Horn's go-to Arborist for the Houston area.



Davis and Davis, Inc. (DDI) *Architecture*

With over 35 years specializing in the design of municipal and private recreational-oriented facilities, DDI offers an award-winning perspective that will be instrumental in your project development. DDI projects have received dozens of awards and have been featured in industry publications. DDI has provided architecture services on numerous Kimley-Horn projects within the last 10 years including recent projects such as Shadow Creek Ranch Ballfields in Pearland and the Bill Witt Aquatic Center in Corpus Christi.

Organization Chart



*Denotes key staff

Note: All Key Personnel have had experience on similar projects and are readily available to perform services.

Organizational Chart and Time Commitments

We have carefully selected a key team of seasoned professionals who offer the high level of responsiveness you need in the short- and long-term duration of your projects, in terms of exceptional local understanding and support, as well as extensive experience in the disciplines you require. The depth of our staff in those required areas of expertise and our familiarity with the needs of Angleton allow us to maximize our coordination efforts while integrating resources, adhering to project schedules, and managing budgets effectively. With these processes in place, we can immediately meet the technical and staffing needs anticipated for your project.

Additionally, all team members are available to serve you and are in an excellent position to handle the workload required to complete the scope of services. Our team is ready to begin the project upon selection

Full resumes highlighting the entire team's qualifications and experience can be found in the Appendix.

Key Staff Involvement in Project Management and On-Site Presence

Key team members of our proposed team, led by our project manager John Fielder, have built strong working relationships that are beneficial in meeting design challenges and client needs. They also have experience working together to refine and implement Kimley-Horn's internal Quality Control/Quality Assessment (QC/QA) program that is essential to project success. Key components of the team's expertise includes landscape architecture (park planning, community needs assessments, park design, park construction document development, park project bidding, and park construction administration); architectural design; and structural and civil engineering (structural integrity review, electrical upgrades, wayfinding, accessibility, and MEP).

The team we have compiled for this project features a project manager you can count on, supplemented by a team you can trust to complete assignments on schedule. Our project manager, **John Fielder, will oversee coordinating the project team**, while **Kristina Malek, Shannon Mundy, and Trevor Tabuena will be the local experts available to you at a moment's notice.**

We embrace a working relationship where clear and frequent communication is a priority. Our team will collaborate with City of Angleton representatives (staff and stakeholders), to develop a clear understanding of your goals, objectives, and design criteria for Veterans Park.

Qualifications and Unique Key Team Members' Knowledge Related to the Project

AVAILABILITY
70%

John Fielder, PLA Project Manager



As project manager, John will handle the day-to-day responsibilities and serve as the primary point-of-contact for any questions regarding our statement of qualifications submission. His project experience includes park design, veterans memorial parks, special use parks, trails, recreation facilities, streetscapes, and site development. John's role as project manager will include continuous coordination with the QC/QA Manager and the design team to keep the project on schedule, drive the conceptual landscape design and work to quickly gain design consensus, and transition the project from the planning phase into design development and construction document phases.

AVAILABILITY
60%

Kristina Malek, PLA Deputy Project Manager



Kristina is a Professional Landscape Architect with 10 years of experience, whose focus is municipal parks, streetscapes, and aquatic projects.

She has worked on a variety of projects, such as park master plans, streetscapes, roadway enhancements, family aquatic centers, and urban redevelopment. Her passion for creating memorable and timeless public spaces inspires her to pursue complex and large-scale municipal projects of all kinds. These varied projects enhance her ability to work well on a multidisciplinary team and collaborate effectively with numerous stakeholder groups. She understands the importance of constant communication and maintaining timelines and budgets while keeping with the overall vision of the project.

AVAILABILITY
40%

Shannon Mundy, PLA Landscape Design



Shannon is a Professional Landscape Architect located in our Houston office with six years of experience in a multitude of project types including retail, multifamily, and municipal parks. She and

Kristina have worked together on numerous park projects in the Houston area, such as the Sugar Land Brazos River Park, Seabrook Park Master Plan and Pearland Shadow Creek Ranch. She specializes in construction documents and understands the importance of creating a realistic design that is constructable and within budget. Shannon enjoys serving communities in the Houston area and recognizes the value of place-making to enhance the public realm.

AVAILABILITY
20%

Mark Hatchel Project Principal and QC/QA



Mark joined Kimley-Horn in 1999 as lead senior landscape architect/park planner and has more than 41 years

of Texas parks and recreation experience. Some of his recreational design projects include special-use parks, park master plans, trails, lakes and ponds, athletic fields, aquatic facilities, and amphitheaters. He has worked on numerous veterans parks throughout the country and is intricately familiar with the requirements of these special-use parks. He has a thorough knowledge of site planning and development of such facilities, as well as the capability to manage large design contracts. Additionally, Mark has won numerous awards on his master plans, parks, and aquatic projects from Texas Recreation and Parks, the Texas Chapter American Society of Landscape Architects, and the American Planning Association.

AVAILABILITY
50%

Trevor Tabuena, PLA Landscape Design



Trevor has five years of experience in a multitude of projects including retail, industrial, multifamily developments, single family communities, and municipal parks. He specializes in construction

phase services as well as construction documents and prides himself in producing clear, organized plan sets. Trevor is currently working on the Angleton Park Standards project.

AVAILABILITY
40%

Erin Eurek, P.E. Accessibility



Erin has over 15 years of traffic and transportation experience. Her focus within the industry centers around accessibility and ADA transition plans. Erin has developed and taught trainings

to multiple municipal and state agencies on the design of pedestrian facilities in the public rights-of-way based on her practical experience as a design engineer and comprehensive knowledge of the Proposed Accessibility Guidelines for Pedestrian Facilities in the Public-Right-of-Way (PROWAG). Her thorough understanding of accessibility guidelines allows her to certify that design for Veteran Park will meet the correct standards. Erin is also the project manager for the Angleton ADA Self Evaluation and Transition plan.

C. Firm Capabilities

Project Team's Line of Authority and Management Functions

As your project manager and main point of contact, **John Fielder** will oversee the coordination of our team members, provide timely communication, ensure quality deliverables, and will be readily available to the City. Having successfully managed multiple projects in the past, you can be assured that John's commitment to his team and to the City of Angleton are persistent; he understands that in order for a project and its team to flourish, communication and adherence to roles and goals is essential.

Over multiple projects we have learned that successful veterans memorial park projects, and park and trail projects require a careful blend of landscape architectural expertise (site planning, signage, relationship to existing park features, sensitivity to land form and grading, sensitivity to adjacent home owners and established park uses, and creating vertical interest and a visually stimulating experience for the park users) and civil engineering/environmental coordination expertise (topographic surveying, pedestrian traffic signal design, traffic control, drainage, and franchise utility notification and coordination).

Our landscape designers, **Shannon Mundy and Trevor Tabuena**, will collaborate with our engineering team and subconsultants to create a well-designed, constructible, and attractive project.

Team's Working Relationship

Communication is the key to any successful relationship or project. Some of our core team members have worked together for over 10 years on numerous park projects. Our established team has proven their commitment time and again, not only to the success of the project but also to the success of their client.

With an extensive history of partnering together on municipal projects, our key personnel form a cohesive team. Over the years, this proposed team has built strong working relationships beneficial in meeting design challenges and client needs. They also have experience working together to refine and implement Kimley-Horn's internal QC/QA program that is essential to project success. Our team consistently provides project deliverables that are not only technically correct but also consistent with client objectives.

Ability to Comply with Schedule

Kimley-Horn is committed to meeting all project schedules. We have more than 30 professionals focused on landscape architecture and planning and more than 350 civil professionals within our Texas region who can be called upon to meet the project's needs if required.

Each month, to ensure accurate and consistent resource allocation, we review projected workloads by using our "cast-ahead" system, a process that plans every project in detail over a six-month period. This system allows us to allocate staffing resources so that the appropriate people are available whenever necessary. We have effectively used this system for many years, and it has proven itself time after time as a valuable tool in controlling schedule and cost. You can find comfort in the fact that the staff members selected for this team are immediately available to serve the City of Angleton and are in an excellent position to handle the workload required to complete the work.

Name	Current	Projected	Availability w%
John Fielder, PLA	1. Rick Oden Park 2. Fort Worth Nature Preserve 3. Jack Carter Park Improvements	1. Plano Veterans Memorial Park Construction Phase Services – Estimated Completion October 2022 2. Rick Oden Park Construction Phase Services – Estimated Completion October 2022 3. Coppell Park Improvements – Estimated Completion May 2022	70%
Kristina Malek, PLA	1. Kemah Multifamily 2. Shadow Creek Ranch Phase 2 Construction Phase Services 3. Timbergrove Phase 3	1. Shadow Creek Ranch Sports Complex Baseball Retrofit – Estimated Completion June 2022 2. Hackberry Park Construction Documents- on hold until Fall of 2022 3. Sam Collins Park Phase 1 Construction Documents – Estimated Completion December 2022	60%

Mark Hatchel	<ol style="list-style-type: none"> 1. Julian Field Park and Veterans Memorial, Mansfield, TX 2. Old Town Aquatic Park Splash Pad, Lewisville, TX 3. Copeland Dog Park, Austin, TX 	<ol style="list-style-type: none"> 1. Julian Fields Park and Veterans Memorial – Construction on hold until 2022 bond election 2. Told Town Aquatic Park Splash Pad – Estimated Construction Completion September 2022 3. Copeland Dog Park – Estimated Construction Completion April 2022 	20%
Shannon Mundy, PLA	<ol style="list-style-type: none"> 1. League City Claremont Trail, League City, TX 2. AHS Multifamily, Houston, TX 3. Guefen Multifamily, Houston, TX 	<ol style="list-style-type: none"> 1. Shadow Creek Ranch Sports Complex Baseball Retrofit – Estimated Completion June 2022 2. Hackberry Park Preliminary Design- Estimated Completion March 2022 3. Sam Collins Park Phase 1 Preliminary Design – Estimated Completion May 2022 	40%
Trevor Tabuena, PLA	<ol style="list-style-type: none"> 1. O'Connor Multifamily, Houston, TX 2. Heights Multifamily, Houston, TX 3. City of Angleton Park Standards, Angleton, TX 	<ol style="list-style-type: none"> 1. Harvest Green Ph 2 Multifamily – Estimated Completion TBD; awaiting project kick off 2. Alvin Junior High – Estimated Completion TBD; awaiting project kick off 3. Montrose Multifamily – Estimated Completion TBD; awaiting project kick off 	50%
Erin Eurek, P.E.	<ol style="list-style-type: none"> 1. Angleton ADA Self-Evaluation and Transition Plan, Angleton, TX 2. Dallas ADA Self-Evaluation and Transition Plan, Dallas, TX 3. Plantation ADA Self-Evaluation and Transition Plan, Plantation, FL 	<ol style="list-style-type: none"> 1. Manhattan ADA Self-Evaluation and Transition Plan – Estimated Completion December 2022 	40%
Kyle Molitor, P.E.	<ol style="list-style-type: none"> 1. International Leadership of Texas K-8 Pearland and Richmond Campuses 2. Public Safety Campus, Baytown, TX 	<ol style="list-style-type: none"> 1. City of Baytown Greenhouse Addition at BNG Arboretum – Estimated Construction Completion September 2022 2. International Leadership of Texas K-8 Santa Fe Campus #2 – Estimated Construction Completion 2023 	20%
Brian LaFoy, P.E.	<ol style="list-style-type: none"> 1. Lower Johnson Creek Improvements, Arlington, TX 2. North Lake College Improvements, Dallas, TX 	<ol style="list-style-type: none"> 1. Collins Road Expansion Project – Estimated Completion 2024 2. Harry Hines Corridor Reconstruction – Estimated Completion 2024 	20%
Manu Isaac, P.E.	<ol style="list-style-type: none"> 1. Wayfinding Sign Program and Designs, Todd Mission, TX 2. Brazos River Turnaround Closure Traffic Study, Sugar Land, TX 	<ol style="list-style-type: none"> 1. TxDOT Traffic Signal Design and Studies 2. League City Traffic Signal Timing 	40%
Jim Weathers	<ol style="list-style-type: none"> 1. Rolling Hills Soccer Complex, Fort Worth, TX 2. Thunder Rock Sports Complex, Marble Falls, TX 	<ol style="list-style-type: none"> 1. Enfield Park Renovation, Plano, TX – Estimated Completion April 2022 2. Lakeside Sports Complex, Little Elm, TX – Estimated completion June 2022 	50%
Andrew Seamans, AIA, NCARB	<ol style="list-style-type: none"> 1. Bill Witt Aquatic Center, Corpus Christi, TX 2. Shadow Creek Park Ballfields, Pearland, TX 	<ol style="list-style-type: none"> 1. Crystal Lagoon Resort / Mattel Adventure Park, Glendale, AZ – anticipated completion Spring 2024 2. Lumos Social, Houston, TX – Estimated Completion Summer 2023 	60%
John Heallen	<ol style="list-style-type: none"> 1. Texas Medical Center 3 – Estimated Completion 2024 2. Aggie Park – Estimated Completion 2024 3. Houston Botanical Garden – Estimated Completion 2022 	<ol style="list-style-type: none"> 1. Texas Medical Center 3 – Estimated Completion 2024 2. Aggie Park – Estimated Completion 2024 	40%
Scott Bray	<ol style="list-style-type: none"> 1. Baltimore Royal Farms Arena 2. St. Joseph's University, Hagen Arena 	<ol style="list-style-type: none"> 1. St. John's University Athletic fields – Various local ISDs 	25%

D. Prior Experience

City of Angleton Experience

Kimley-Horn is currently working on creating Angleton's Park Standards which will help guide developers, consultants, and staff on future park improvements. This project enables us to have a deep understanding of the City's current standards and understand the layout of the Angleton Park system. Kimley-Horn is also currently working on the ADA Self Evaluation and Transition Plan for the City.

Relevant Experience

Lake Wichita Parks and Trails Lake Wichita, TX



In 2012, Kimley-Horn began working with the City of Wichita Falls on extensions to complete their city-wide trail system. The segments included portions of the Holiday Lake Trail and Circle Trail resulting in over 10 miles of continuous trail. The trails were completed utilizing City and TxDOT funding over five years. All bids were awarded within available funding. In 2018, Kimley-Horn met with the City to discuss capabilities and interest in upcoming projects. Following this meeting, we were selected to take over the multi-phased Lake Wichita Revitalization project from a local design firm, which had previously completed preliminary conceptual design. Kimley-Horn provided an updated conceptual design, U.S. Army Corps of Engineers (USACE) permitting coordination, final construction documents, and provided construction phase services for the initial construction phase. We held public meetings with City staff and the Lake Wichita Revitalization Committee to discuss needs and desires for the park and to address funding and design elements to include in the project.

The final approved concept includes a 200-foot boardwalk with an enhanced entry staircase, shoreline improvements, pavilions, kayak launch area, a 500-linear-foot (LF) seawall with boat docks, a boat access ramp, a restroom building, a veteran's memorial plaza, site lighting, site furnishings and seating areas, and enhanced landscape and hardscape areas. Funding for the project came from City Capital Improvement Project (CIP) funding, additional bond funding, Texas Parks & Wildlife Grants, and private donations. Kimley-Horn then prepared schematic design plans and met with the USACE regarding permitting for the proposed improvements. Design of the initial boardwalk phase was completed, along with USACE review and approval, by August 2019. Bids for the boardwalk project were received in October 2019, and construction began in November 2019 and was completed in May 2020. Phase II plans were completed in December 2019, and Phase III plans were completed in April 2021. Construction on the remaining phases began in late 2021. In addition

to the Lake Wichita Revitalization project, the City also hired Kimley-Horn to prepare construction documents for a TxDOT-funded trail segment to connect Lake Wichita Park to the existing off-street trail along Lake Shore Drive. This included approximately one-mile of trail, with three bridge crossings and additional culvert crossings.

North Carolina Veterans Park and Freedom Trail Fayetteville, NC

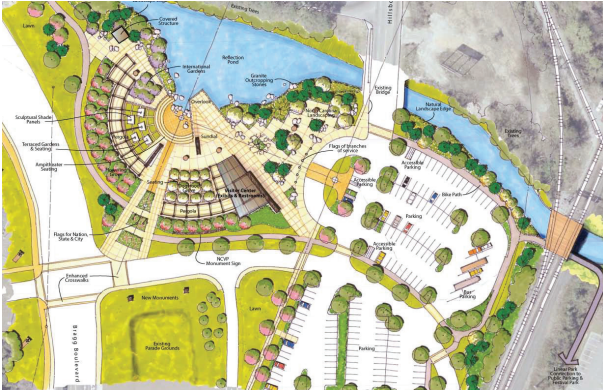
Key Staff:

Mark Hatchel

Client Reference:

City of Fayetteville
Jeanette Strickland
910.223.4332
jeanette.strickland@faypwc.com

Kimley-Horn led a multi-disciplinary/multi-firm design team for this contemporary tribute to North Carolina's veterans. The first phase involved refining the master concept plan (completed by others) through close coordination with the City of Fayetteville and the project's stakeholders. The firm transformed the design into construction documents and provided full services through construction of the 15-acre park. Phase 1 components included a visitors' center, public art, interactive water features, an



amphitheater, gardens, road improvements, and environmental permitting. These spaces include intimate gardens, a vegetated amphitheater, color and meditative gardens, and large urban plazas. Every space has water integrated as a major design component, and each water feature presents a different characteristic of water from reflective to active, programmed jets, and water-walls. Public art also has been integrated into the park as a significant design element. Given the user population, the entire park was designed with accessibility in mind.

The team restored a tributary to Cross Creek, which included stormwater wetlands and bioretention areas integrated in the parks landscape to treat the new impervious cover. Kimley-Horn restored a highly degraded stream system using an innovative bypass system

that diverts storms larger than the 10-year event away from the restored channel. Kimley-Horn negotiated the use of a Nationwide Permit, avoiding the need for a more time-intensive Individual Permit. Kimley-Horn achieved a “No-Impact” Certification even though most of the park and visitor center were in a FEMA-regulated floodplain.

Kimley-Horn provided landscape architecture and structural engineering services, including trail alignment, hardscape design, planting design, contract documents, bidding, and construction administration on the quarter-mile-long Freedom Trail.

Limited right-of-way, future road realignment, existing utility infrastructure, mature canopy trees, and severe topography along a narrow project corridor presented site challenges that required introducing structural elements into the design solution. Key design elements included decorative concrete sidewalks with etched graphics, retaining walls clad with North Carolina granite, “Guardians of Freedom” markers with granite cladding and LED backlighting, decorative pedestrian lighting, plantings, and an elevated timber boardwalk. Located across Bragg Boulevard from the park, this trail connects the park and the Airborne and Special Operations Museum (ASOM) to the City’s Rowan Park. Kimley-Horn collaborated with City staff and the private developers constructing the high-density residential project immediately adjacent to the park to design a streetscape and trail that complemented the park and integrated into the residential development.

Descriptions of project components:

COMMUNITY PLAZA VIGNETTE

The intent of the Oath of Service Wall defines the Community Plaza and suggests transition from community into a life of service. Actual bronze castings of North Carolina veterans’ hands, one from each of the 100 North Carolina counties, represent the men and women who left their respective communities to take the oath of service that is engraved upon the wall. The bronze castings are displayed as a line of right hands, displayed to create an abstract visual representation of a swearing-in ceremony. Fifty community columns display castings of hands from families and friends of veterans, from each of the 100 North Carolina counties, to represent community support for those who take the oath of service.



VETERANS WALK

Once a road, this prominent pedestrian spine connects the ASOM to the North Carolina Veterans Park (NCVP), formalizing that important relationship and creating a stronger, more respectful setting for the existing parade field. The parade of flags reinforces the campus connector flying high over the parade field. The strategic locations of the iconic Iron Mike statue in the foreground of the ASOM and the larger-than-life tribute to General Hugh Shelton create further drama and interest between these facilities.



VISITOR CENTER, COMMUNITY GARDEN, AND SENTRY

The Story Garden is an intimate “back porch” experience for visitors to relax and listen to recorded or live versions of veterans’ stories while looking out at a simple garden landscape. Public art from North Carolina will adorn the garden, including the Garden Support Sentry—a glass panel set in a shallow reflecting pool reinforcing themes of Welcome Home, Healing, and Thanks.



FREEDOM TRAIL PEDESTRIAN PATH

The Freedom Trail is a downtown amenity providing connectivity from the NCVP / ASOM campus and the existing Freedom Memorial Park, as well as to the community in general. The path ties into the City's parks and greenway system. The design is simple, with no storylines, and frames the gateway position of the NCVP within the downtown area. The Freedom Trail creates formality; moves the NCVP edge across Bragg Boulevard, creating a "parkway"; and establishes a link to the City Greenway Master Plan. The path also provides a trailhead function and staging area for Freedom Memorial Park events. The vertical granite "Guardians of Freedom" establish a strong pattern supplemented by vertical elements—lighting and trees to create a gateway corridor befitting the NCVP and the City.



PATRIOT WALL

The Service Plaza includes two of the most iconic symbols of the NCVP—the Patriot Wall and the Pride and Purpose Sentry. The 35-foot granite-clad column is lit at night and punctuates this space as a strong symbol of pride and purpose. The central organizing element of the plaza is the Patriot Wall, a linear water feature constructed from North Carolina granite, bluestone, polished steel panels, and etched glass. The overall plaza is reminiscent of an outdoor art gallery with rooms created by a series of water features, walls, and public art. Seven gallery walls define outdoor rooms within the plaza, each wall a sculpture created from salvaged military equipment by North Carolina artists.



Lake Worth Veterans Park 📍 Lake Worth, TX



Our team of landscape architects worked with representatives from the City of Lake Worth to provide master planning and construction documents for a veterans memorial in Lake Worth. This memorial is dedicated to all veterans for all wars— "All Gave Some – Some Gave All." Kimley-Horn developed unique features including a monument placement, walls, flags, a seat wall, and linkage sidewalks to City Hall.

Key Staff:

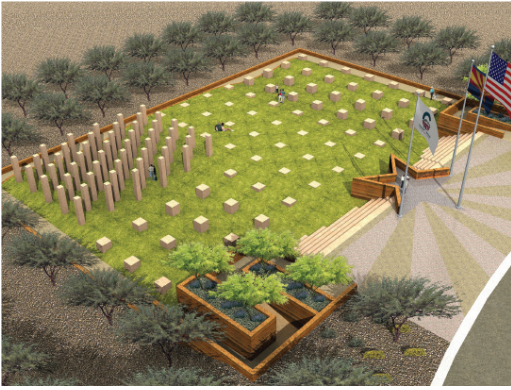
John Fielder
Mark Hatchel
Kristina Malek
Jim Weathers

Client Reference:

City of Lake Worth
Stacey Almond
City Manager
817.237.1211
salmond@lakeworthtx.org



Veterans Oasis Park Memorial Chandler, AZ



Key Staff:

Mark Hatchel

Client Reference:

City of Chandler
Mickey Ohland
Park Development and
Operations Manager
480.782.2743
mickey.ohland@chandleraz.gov

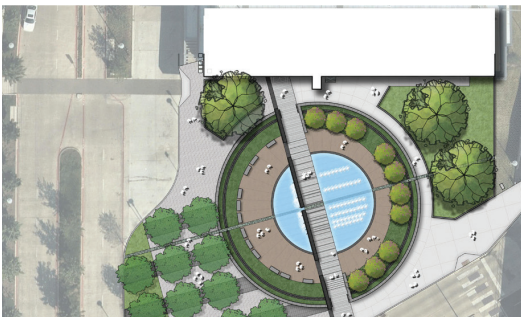
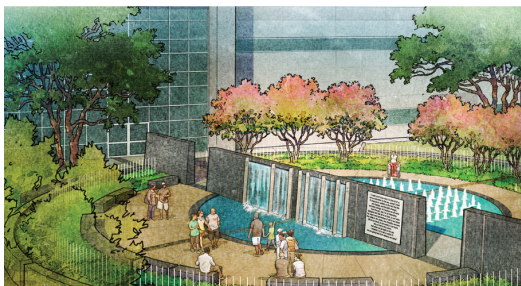
Located at the corner of Chandler Heights Road and Lindsay Road in southeast Chandler, Veteran's Oasis Park is a 113-acre community park featuring an environmental education center, urban fishing lake, and an extensive network of trails. The Kimley-Horn team was selected to complement those amenities with the design of the park's Veterans Memorial.

Public input from Chandler residents and local veterans groups was identified and developed into six themes or literary pillars that were incorporated into the memorial's design—Freedom, Recognition, Reflection, Sacrifice, Memories, and Family. The memorial's primary goal is to provide a reflection space for individuals and groups of various sizes through a feeling of safety and privacy from the surrounding land uses and roadways. The memorial is composed of two distinctive spaces. The lower level of the memorial was designed to match the exact ratio of the American flag. Its grid of stone plinths defines the stars and stripes of the flag while the rolling landform emulates the ripples of the flag blowing in the wind.

This perfect grid is meant to emulate soldiers marching in unison. The plinths slowly disappear and reappear as they are enveloped by the rising landform that is meant to represent soldiers going off to war and then returning. Twenty-one of these cubes are completely submerged within the earth as a tribute

or 'twenty-one gun salute' for those that did not return. An elevated overlook and main plaza replicate the simplicity of the Arizona State Flag. From this star-shaped "family" overlook, visitors can peer down into the memorial and gain a feeling of watching over their country while their friends or loved ones are away. The star also represents the service flag, or war mothers, which are hung in families' windows to display that they have an immediate family member serving in the military. The vertical faces of the walls and plinths offer an excellent opportunity to tell the story of the City of Chandler's contributions to past war efforts as well as memories or stories from local veterans. Local artists will be encouraged to 'paint' this open canvas with the city's history through an integration that remains true to the six literary pillars of the memorial.

John F. Kennedy Memorial Park Dallas, TX



Key Staff:

Mark Hatchel

Client Reference:

The Parkland Foundation
Cindy Scott
Vice President of Development
214.366.7628
jill.hassman@phhs.org

Parkland Hospital was the focal point of the entire country and most of the world on November 22nd, 1963 when President John F. Kennedy was brought through the hospital doors after being shot in Dealey Plaza in Downtown Dallas. With a new campus and hospital facility completed in 2015, the Parkland Foundation hired Kimley-Horn to design a new exterior memorial to honor the memory of JFK in preparation for the 55-year anniversary of the President's death and Parkland's role in one of the most important days in the United States history.

The design tells the story through an interactive timeline fountain, with critical times during JFK's final day activated with a series of fountain jets. At 12:30, the moment he was shot, the fountain will turn off and drain dry, signifying the devastation felt across the country.

The other side of the fountain will include a water wall that connects the visitor to an active water wall that connects the visitor to JFK's love of the ocean and our connections as humanity to the sea. This water wall will be built from mica garnet schist, a native stone from Kennedy's homeland in Massachusetts, along with large specimen live oaks, cut limestone, and native plants, this space will be beautiful testament and memory to one of America's most beloved presidents. Kimley-Horn is providing concept design, schematic design and design development, construction documents, and construction administration services.

E. Project Approach

Project Understanding

The project will consist of the design and construction of park improvements at the existing Veterans Park in Angleton, Texas. Our team has designed park improvements and veterans memorials and multiple park sites, and we understand the need for serene reflection spaces associated with memorials, and how to connect them with the surrounding park site and features. Additionally, we have designed and overseen the construction of an extensive list of municipal parks with features such as pavilions, amphitheaters, buildings, and site furnishings that will likely be included in this park development.

Based on feedback received from the public, we will design the planned park improvements and incorporate the memorial into the planned park improvements. We will also seek out opportunities for decorative lighting, interpretive signage, and landscape enhancements wherever possible to provide a serene space for reflection and connection with the community. We will connect with the residents and stakeholders to identify the needs and desires of the park users and develop a plan with City staff to meet the goals of the community.

While these projects will most likely be favored by most within the City, it will be important to engage stakeholders early to solicit feedback on the proposed improvements. Additionally, a charrette exploring options for aesthetic enhancements is a good way to bolster community involvement and excitement for the project. Our vast experience with trails, parks, aquatics/fountains, and veterans memorial projects provides us with the necessary skills to serve the City in the design and delivery of the proposed improvements at Angleton Veterans Park.

Project Approach

We embrace a working relationship where clear and frequent communication is a priority. As such, our team will collaborate with City staff, residents, and stakeholders to develop a clear understanding of the goals, objectives, and design criteria for this Veterans Park project, as well as the connectivity to any existing and future parks and trails. Our project approach begins with an initial focus on quality that is present throughout the entire process, followed by research/data collection, public involvement, preliminary through final design, and bidding/construction phase services. The approach is fortified by our experienced design team, that has a proven track record of delivering projects that are on time and within budget.

Identifiable Opportunities and Constraints and their Applicable Approaches

As part of our natural design process, we will look at potential constraints to help guide the design towards an implementable path. Kimley-Horn will use our multidisciplinary team of landscape architects, park planners, and engineers to create a plan for Veterans Park that not only reflects the community's desires but can be realistically constructed.

Some of the site opportunities and constraints we perceive currently include:

Opportunity: It is our understanding the City has adequate funding to implement the desired park features identified in the conceptual design.

Approach: Throughout the meeting with Staff, Stakeholders and Residents, we will identify the most important features that should be included in the park design as base bid items, as well as incorporate additional features as alternate bid items that could be incorporated into the park if additional funding is available.

Kimley-Horn is familiar with the construction bidding market through our success in implementing park projects into construction. We will use this information to develop an Opinion of Probable Construction Costs (OPCC) which will align with the proposed improvements and provide updates at each design phase, so that the City will have reassurance the project can be realized with the available funding.



Opportunity: The existing head-in parking and newly constructed parking lots located to the east and west of the park site.

Approach: Given the adjacency to downtown and existing parking lots, the existing head-in parking could be reduced or eliminated to provide additional space for the park. However, this opportunity will require additional discussion with City staff and the Public to determine

the feasibility. We will utilize our talented teammates with extensive experience in downtown parking, traffic, and accessibility projects to assist with reviewing and discussing this as a design solution.

Opportunity: Existing utilities are located at the site and/or adjacent to the site.

Approach: Our design team will utilize the topographic survey, available as-built/record drawings, and site observations to locate the existing utilities and work with our engineering team to determine the most effective way to connect to the existing utilities. We will also consider location of park features to be distanced from utilities such as the existing overhead power lines.



Constraint: During our site visits, we noted the limited accessibility to the adjacent sites and parking lots.

Approach: Our team includes accessibility specialists that will work with us early in the design process to determine the best approach to provide access to and through the site for pedestrians and incorporate the accessible routes into the design.

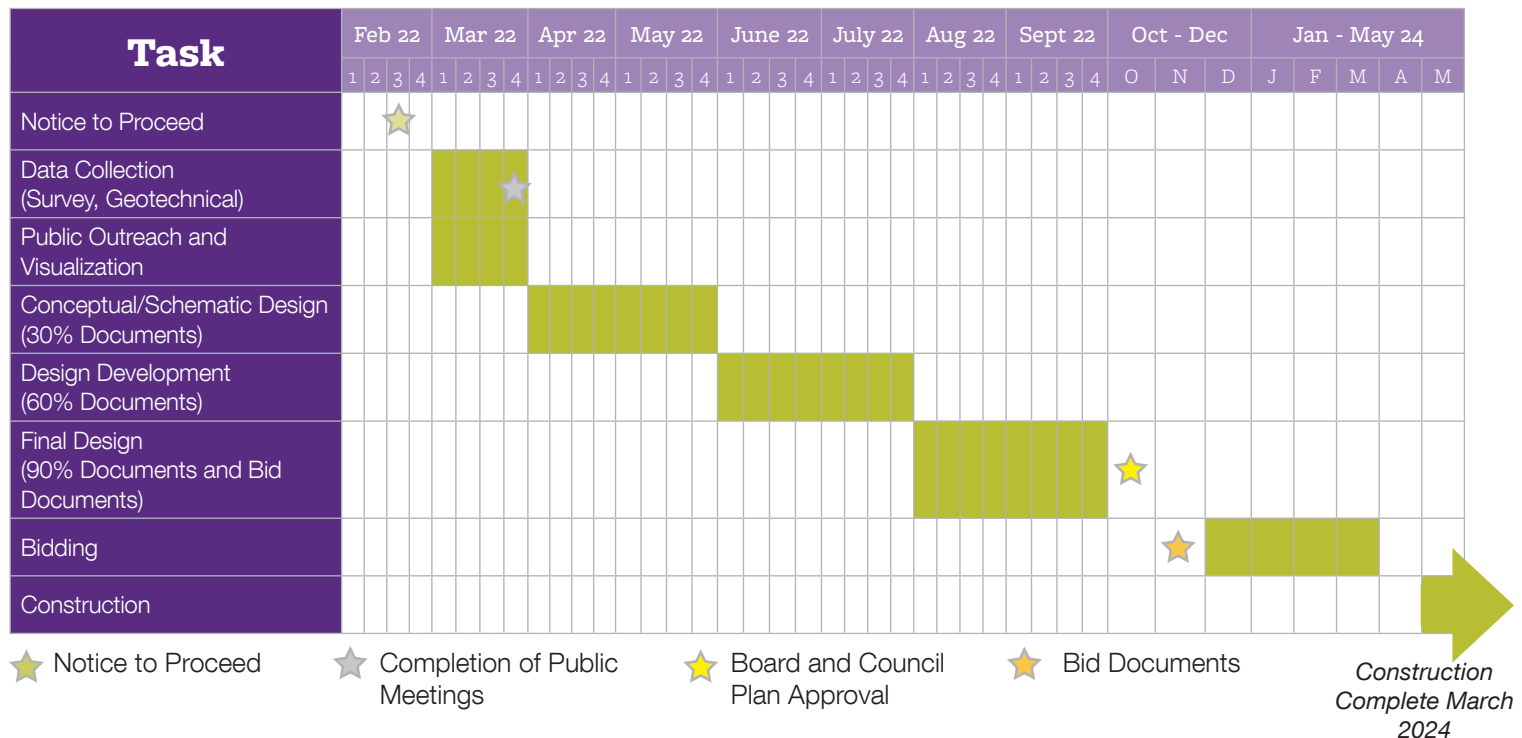


Constraints: The existing shade trees provide shade for the park but limit the available park area for new features.

Approach: Our arborist will provide an initial health assessment to determine the overall health of the existing trees and provide a recommendation for removal and preservation of the existing trees. As landscape architects, we understand the value of the urban canopy and work to preserve and incorporate our designs around healthy existing trees that can provide value to the community. We will develop tree preservation standards and details for the project to make sure that healthy existing trees will remain at the park.

Project Schedule

Kimley-Horn has a proven record of performing projects on time and within budget. All of the projects included in Section D required adherence to a specific schedule and budget. What made these projects successful was a combination of a talented full-service, in-house design team and our constant, ongoing QC/QA, and project cost-estimate reviews. We are committed to meeting a design completion by November 2022. Our firm has available resources to dedicate the appropriate staff to this project to meet the City's goals. Kimley-Horn's overall flexibility also allows us to move quickly. Below is our proposed schedule for this project; it can be adjusted as needed to meet the desired timeframe the City prefers.



Project Budgets

We prepare our cost estimates in accordance with American Association of Cost Engineers (AACE) International cost estimate classification system and have extensive experience in developing project budget and costs estimates for both private and public clients. We have an internal bid tabulation database and access to local and statewide databases which allows us to update the Opinion of Probable Construction Cost (OPCC) with the most recent unit costs.

Kimley-Horn's ability to perform within budget constraints is a result of the accuracy of the cost estimates we prepare. At each phase of a project the cost estimate is updated to identify if the project is on track. This allows us to work with the City to make adjustments to take advantage of anticipated savings or to reduce the scope in order to stay within the budget. Throughout design, we update and refine the OPCC with each milestone. The OPCC detail increases as the level of detailed design increases. As we move further into design, the unknowns decrease along with the contingencies, resulting in a reliable OPCC. The OPCCs we develop are generally within 5-8% of the average low bidder.

Our track record of tight bids and low change orders demonstrates our level of experience and commitment to quality. The quality and clarity of the plans speak for themselves with the low bid variance and a track record of minimal to no change orders on our projects. When plans are unclear, contractors interpret the design differently. Then they become concerned about risk, and this typically results in higher and more sporadic unit prices. We strive to provide the highest quality plan set, leaving little room for assumptions and misinterpretation. The high quality and thoroughness of our plans result in the lowest and most competitive bids. We believe that our design fees oftentimes pay for themselves through savings to our clients realized by aggressive bids.

Research and Data Collection

Upon project assignment, Kimley-Horn will be ready to immediately begin additional research in determining solutions to potential project constraints. A final conceptual exhibit will be prepared, and Kimley-Horn will conduct meetings and begin coordinating with City staff, residents, and additional representatives in order to determine any project limitations and constraints, as well as desires and needs of the community. Following these initial meetings, additional services, such as geotechnical investigation and topographic survey, will be initiated to determine additional project constraints and determine the next steps for the project.

Public Outreach and Visualization



As landscape architects, we often produce graphic representations. When that skill is combined with our ability to connect and collaborate with designers and stakeholders, it makes our team effective facilitators of public meetings. Since this project will include a veteran's memorial, our team will assist the City staff, stakeholders, and residents in visualizing the proposed park enhancements, and develop conceptual renderings through a design charrette. Our exceptional ability to provide three-dimensional graphic concepts will assist the public in seeing the future of their parks and trails. This will result in overall excitement and interest, leading to objective feedback from residents at public meetings and workshops, and the digital images may also be used for public information and/or approvals by the City. This process has worked well during our park master planning processes, which we have most recently completed for the City of Wichita Falls for their Lake Wichita Park Revitalization and Veterans Memorial project.

When necessary, Kimley-Horn will perform additional public outreach and visualization sessions to develop final digital renderings of the plan view and three-dimensional sketches. This will help to create a meeting of the minds between the design team, City staff, residents, and additional stakeholders. Historical and/or cultural design elements will be identified during this task and incorporated into the final conceptual design.

Schematic Design (30% Documents)

Following City approval of the initial concept, Kimley-Horn will move forward with schematic design in an effort to meet the local, and/or other agency submittal requirements. Kimley-Horn will prepare schematic plans, sections, and outline specifications for the landscape design and site development of the park improvements, showing critical dimensions, and features. We will provide a preliminary OPCC for the project, and answer questions regarding cost data. This task will include meetings with the City and representatives during the design, to present the design progress, and obtain comments from City and representatives.

Design Development (60% Documents)

Following approval of the schematic by the City, Kimley-Horn will continue with preparing the final plan sheets to the 60% completion level. This task will include meetings with City staff to review design development progress, review updated cost estimates, and address City staff comments. The 60% design set will be prepared and submitted to the City for review.

Final Design (90% Documents)

Following approval of the 60% plans, Kimley-Horn will continue with design and prepare the 90% plans. The 90% plan set will be reviewed/approved by the City and submitted to additional agencies (if needed). This task will include meetings with the City to review the construction document plan development, review updated cost estimates, and address City staff comments.

100% Construction Documents/Bidding Phase

Following full City approval, the plans will be signed and sealed as 100% construction documents and let for public bid. Kimley-Horn will assist the City in notifying prospective bidders, as well as provide ongoing coordination with bidders, and respond to contractors with project questions and clarifications.

Construction Phase Services

Kimley-Horn will work closely with the City throughout the construction phase. Having an office near Angleton allows for us to be available for scheduled, as well as unscheduled construction meetings and ongoing coordination with inspectors, contractors, and City staff throughout the project construction. Following completion, Kimley-Horn will perform final design review and prepare punch lists as needed to require contractors to adhere to the prepared plans, details, and specifications.

Our team consistently provides project deliverables that are not only technically correct but also consistent with client objectives.



Quality Control

A key element of our management approach, that characterizes the entire management and production process, involves QC/QA and Kimley-Horn's formal in-house program for total quality management: Continuous Quality Improvement (CQI). Kimley-Horn, its employees, and its project teams share a commitment to providing our clients with quality, responsive service.

To assure quality in the services we provide and projects we complete, Kimley-Horn established a firmwide CQI program several years ago. Our CQI program is not just a means of internal quality reviews; Kimley-Horn endeavors to involve our clients in meaningful, formal, CQI tasks that have benefits extending beyond the project or task at hand. We have conducted numerous CQI tasks for projects involving state and regional agencies nationwide and continue to strive to identify areas for improvement. We work with our clients to achieve a higher level of success for the project and consultant/client relationship.

Kimley-Horn's formal **QC/QA program is based upon assigning experienced, senior professionals who are otherwise qualified to manage a particular project, to serve in an independent quality control role.** Our depth of professionals allows us to provide such personnel, and their involvement provides the project with a fresh perspective and critical eye.

Our internal QC/QA program will include:

- » An internal kick-off meeting held with key team members assigned to the job to clearly define the scope, outline sub-task responsibilities, establish schedules, and identify project milestones and goals.
- » At the end of each phase, a QC/QA review will be conducted as one of several final checks to make sure that the project deliverable is not only technically correct, but also consistent with your objectives.

Any changes or modifications required to address the comments and recommendations of the quality control team will be incorporated during the ongoing analysis prior to submitting deliverables.

F. References

City of Seabrook

 Morgan Early | Project Manager

 281.652.1734

 mearly@pearlandtx.gov

RELEVANT EXPERIENCE: Open Space and Parks Master Plan

City of Wichita Falls

 T. Blane Boswell, P.E. | City Engineer

 940.761.7477

 blane.boswell@wichitafallstx.gov

RELEVANT EXPERIENCE: Lake Wichita Parks and Trails Revitalization Project

City of Pearland

 Kevin Carter | Assistant Director, Parks and Recreation

 281.412.8900

 kcarter@pearlandtx.gov

RELEVANT EXPERIENCE: Shadow Creek Sports Ranch

City of Baytown

 Clifford Hatch | Director of Parks and Recreation Department

 281.420.5300

 Clifford.Hatch@Baytown.org

RELEVANT EXPERIENCE: Pirates Bay Family Aquatic Center

G. Appendix



John Fielder,

PLA

Project Manager

Qualifications

*Bachelor of Landscape
Architecture, Texas A&M University*

*Professional Landscape Architect in
Texas (No. 2344) and Louisiana*

*American Society of Landscape
Architects, Member*

*Texas Recreation and Parks Society
(TRAPS), Member*

John's focus is landscape architecture design and park planning, and he has served numerous municipalities throughout Texas for over 17 years. His project experience includes park design, trails, recreation facilities, streetscapes, and site development. He has well-developed written, graphic, and oral presentation skills. He has produced written correspondence with clients, negotiated various issues with clients and city officials, and has produced graphic presentations using hand and computer rendering techniques. John's role as project manager includes continuous coordination with the QA/QC reviewer and the design team to keep the project on schedule, drive the conceptual landscape design and work to quickly gain design consensus, and transition the project from the planning phase into design development and construction document phases. His current experience in streetscapes include high-end landscape and monument design, as well as streetscapes with reduced budgets. John strives to combine sustainable principles, design experience, and local site knowledge to create impactful and manageable landscapes.

Relevant Recent Experience

- ▶ Lake Wichita Park Revitalization and Veterans Memorial – Wichita Falls, TX
- ▶ Plano Veterans Memorial Park – Plano, TX
- ▶ Lake Worth Veterans Memorial – Lake Worth, TX
- ▶ San Jacinto Boulevard Phase 1 & 2 Concept Plan and CDs — Baytown, TX
- ▶ Pirates Bay Water Park – Baytown, TX
- ▶ NC Foote Family Aquatic Center – Baytown, TX
- ▶ Boys Ranch Park Master Plan and Construction Documents — Bedford, TX
- ▶ Pollard Street Veterans Memorial Park – El Paso, TX
- ▶ Rick Oden Park – Garland, TX
- ▶ Riverside Park – Fort Worth, TX
- ▶ Holliday Creek and Circle Trail Extensions – Wichita Falls, TX
- ▶ Ablon Park Master Plan – Garland, TX
- ▶ Aquatic Facilities Master Plan – Baytown, TX
- ▶ Bedford Boys Ranch Park Master Plan – Bedford, TX
- ▶ Briercliff Neighborhood Park – Denton, TX
- ▶ Burl Wilkes Park Improvements – Arlington, TX
- ▶ Eden Road Park – Arlington, TX
- ▶ Fairview Parkway Trail and Streetscape – Fairview, TX
- ▶ Grand Lake Park – Lake Worth, TX
- ▶ Guymon Soccer Complex – Guymon, OK
- ▶ Heritage Skate Park – Flower Mound, TX
- ▶ Highway 10 'Green Ribbon' Landscape Improvements – Hurst, TX
- ▶ Jack Carter Park Master Plan Update, Plano, TX
- ▶ Lake Ridge Parkway Hike and Bike Trail – Cedar Hill, TX
- ▶ Lake Worth Sports Complex Master Plan – Lake Worth, TX
- ▶ Legacy Trail Extension and Pedestrian Bridge – Plano, TX
- ▶ Little Elm Park Master Plan – Little Elm, TX
- ▶ Tripp Road Streetscape and Monumentation – Mesquite, TX



Kristina Malek, PLA

Deputy Project Manager

Qualifications

Bachelor of Landscape Architecture, Texas A&M University

Professional Landscape Architect in Texas (No. 2988)

American Society of Landscape Architects, Member

Kristina is a Professional Landscape Architect with eight years of experience, whose focus is municipal parks, streetscapes, and aquatics projects. She has worked on a variety of projects, such as park master plans, streetscapes, roadway enhancements, family aquatic centers, and urban redevelopment. Her passion for creating memorable and timeless public spaces inspires her to pursue complex and large-scale municipal projects of all kinds. These varied projects enhance her ability to work well on a multidisciplinary team and collaborate effectively with numerous stakeholder groups. She understands the importance of constant communication and maintaining timelines and budgets while keeping with the overall vision of the project.

Relevant Recent Experience

- ▶ City of Angleton Park Standards – Angleton, TX
- ▶ Lynn Brisendine Community Plaza Concept Plan and CDs – Brownfield, TX
- ▶ Bedford Boys Ranch Park Master Plan and Construction Documents (Phase I) – Bedford, TX
- ▶ Shadow Creek Sports Ranch (Phase II) – Pearland, TX
- ▶ Brazos River Park Master Plan – Sugar Land, TX
- ▶ City Wide Open Space and Parks Master Plan – Seabrook, TX
- ▶ American Legion Community Park Master Plan and Construction Documents – Missouri City, TX
- ▶ Sportcix Sports Training Complex Master Plan – Harris County, TX
- ▶ Little Elm Park Master Plan and CDs – Little Elm, TX
- ▶ Corridor Enhancements – Energy Corridor District, TX
- ▶ Downtown Revitalization Phase 3 Concept Plan and CDs – Lake Jackson, TX
- ▶ Conroe Aquatic Center Renovation Concept Plan and CDs – Conroe, TX
- ▶ San Jacinto Boulevard Phase 1 & 2 Concept Plan and CDs – Baytown, TX



Mark Hatchel

Project Principal and QC/QA Manager

Qualifications

*Bachelor of Science, Landscape
Architecture, Texas A&M University*

*Texas A&M University Landscape
Architecture and Planning
Professional Advisory Board, Past
Chair*

Mark joined Kimley-Horn in 1999 as a lead senior landscape architect/park planner and has more than 40 years of Texas parks and recreation experience. He has concentrated experience in landscape architectural design for a broad scope of clients, both public and private; some of his recreational design projects include park master plans, trails, lakes and ponds, athletic fields, aquatic facilities, amphitheaters, and other special-use parks. He has a thorough knowledge of site planning and development of such facilities, as well as the capability to manage large design contracts. Mark has an outstanding record of client service and quality park facility assessment and design experience; his master plans and public consensus-building expertise have resulted in public support and funding for a wide variety of project types. He has won numerous awards on his master plans, parks, and aquatic projects from Texas Recreation and Parks, the Texas Chapter American Society of Landscape Architects, and the American Planning Association. In 2018, Mark was named an Outstanding Graduate of the Texas A&M University College of Architecture. In 2019, Mark was inducted into the World Waterpark Association Hall of Fame.

Mark has been actively involved honoring Texas veterans' groups for the past 30 years.

Relevant Recent Experience

- ▶ Bedford Boys Ranch Park Master Plan — Bedford, TX
- ▶ Lake Wichita Revitalization Project — Wichita Falls, TX
- ▶ Little Elm Strategic Park Master Plan and Visioning Process — Little Elm, TX
- ▶ Services for Park, Recreation and Open Space Projects — Marble Falls, TX
- ▶ Rick Oden Park Master Plan — Garland, TX
- ▶ Corinth Community Park Master Plan — Corinth, TX
- ▶ Little Elm and Beard Park Master Plan Improvements — Little Elm, TX
- ▶ Camp Bowie Sports Complex — Brownwood, TX
- ▶ Texas A&M University Campus Master Plan — College Station, TX
- ▶ Oak Pointe Park Amphitheater — Plano, TX
- ▶ Freedman's Memorial Improvements — Dallas, TX
- ▶ Lynn Brisendine Community Plaza — Brownfield, TX
- ▶ Camp Bowie Sports Complex, Aquatic Center, and Senior Center Annex — Brownwood, TX
- ▶ Multiple Park Projects — Odessa, TX
- ▶ Multiple Park Projects — Dallas, TX
- ▶ Multiple Park Projects — Midland, TX
- ▶ Canyon Family Aquatic Center — Canyon, TX
- ▶ Multiple Park Projects — Bedford, TX
- ▶ Multiple Park Projects — McKinney, TX
- ▶ Multiple Park Projects — Waco, TX
- ▶ Little Elm and Beard Park Improvements — Little Elm, TX
- ▶ Vanston Park Pool — Mesquite, TX
- ▶ Little Elm Strategic Park Master Plan and Visioning Process — Little Elm, TX



Shannon Mundy, PLA

Landscape Design

Qualifications

Bachelor of Landscape, University of Georgia

Professional Landscape Architect in Texas (No. 3543)

American Society of Landscape Architects, Houston / Gulf Coast Leadership Team and Member

Shannon is a Professional Landscape Architect with six years of experience in a multitude of projects including retail, industrial, multifamily developments, and municipal parks. Shannon's has an enthusiasm for collaboration which reflects in presentations, deliverables, and meetings. She specializes in construction documents and understands the importance of creating a realistic design for the client that is constructable and within budget.

Relevant Recent Experience

- ▶ Shadow Creek Sports Ranch (Phase II) — Pearland, TX
- ▶ Brazos River Park Master Plan — Sugar Land, TX
- ▶ Seabrook Parks Master Plan — Seabrook, TX
- ▶ Conroe Aquatic Center Renovation — Conroe, TX
- ▶ Burleson Dog Park — Burleson, TX
- ▶ American Legion Park — Missouri City, TX
- ▶ Blue Trails Study — Alvin, TX
- ▶ Garth Road Redesign — Baytown, TX
- ▶ Corridor Enhancements — Energy Corridor District, TX
- ▶ Downtown Phase 3 — Lake Jackson, TX
- ▶ 27th Street Landscape Improvements — Galveston, TX
- ▶ Sugar Land Parks Wayfinding Standards — Sugar Land, TX
- ▶ New Braunfels Wayfinding Signage Standards — New Braunfels, TX



Trevor Tabuena, PLA

Landscape Design

Qualifications

Bachelor of Landscape, Texas A&M University

Professional Landscape Architect in Texas (No. 3684)

Trevor is a Professional Landscape Architect with five years of experience in a multitude of projects including retail, industrial, multifamily developments, single family communities, and municipal parks. Trevor has a team-oriented work ethic which is reflected in presentations, deliverables, and meetings. He specializes in construction phase services as well as construction documents and prides himself in producing clear, organized plan sets.

Relevant Recent Experience

- ▶ City of Angleton Park Standards – Angleton, TX
- ▶ The Sports Complex at Shadow Creek Ranch – Pearland, TX
- ▶ Burleson Dog Park – Burleson, TX
- ▶ American Legion Park – Missouri City, TX
- ▶ Energy Corridor District Eldridge – Houston, TX
- ▶ Baytown Public Safety Facility – Baytown, TX
- ▶ DUA2 – Cedar Park, TX
- ▶ Uvalde Memorial Hospital – Uvalde, TX



Erin Eurek, P.E.

Accessibility

Qualifications

Master of Civil Engineering, Texas A&M University

Bachelor of Science, Civil Engineering, Texas A&M University

Professional Engineer in Texas (No. 107284)

Institute of Transportation Engineers, Member

TxDOT Pre-certifications: 8.1.1, 8.3.1, 9.1.1

Erin has 15 years of traffic, transportation, and accessibility experience with Kimley-Horn and more than three years of research experience with the Texas Transportation Institute. In addition to her focus on ADA Transition Plans, Erin has extensive experience with traffic signal design, including those with complex design issues where right-of-way is limited, and ADA compliance challenges exist. Erin spearheaded the development of Kimley-Horn's ADA data collection, data processing, and data management application (KADA) that has been used to complete ADA Transition Plan projects nationwide. Erin has developed and taught trainings to multiple municipal and state agencies on the design of pedestrian facilities in the public rights-of-way based on her practical experience as a design engineer and comprehensive knowledge of the Proposed Accessibility Guidelines for Pedestrian Facilities in the Public-Right-of-Way (PROWAG).

Relevant Recent Experience

- ▶ Angleton ADA Transition Plan – Angleton, TX
- ▶ Dallas ADA Self-Evaluation and Transition Plan — Dallas, TX
- ▶ Pflugerville ADA Self-Evaluation and Transition Plan — Pflugerville, TX
- ▶ Cedar Park ADA Self-Evaluation and Transition Plan — Cedar Park, TX
- ▶ Farmers Branch ADA Self-Evaluation and Transition Plan — Farmers Branch, TX
- ▶ TxDOT Pedestrian Access Inventory — Statewide, TX
- ▶ Southlake ADA Self-Evaluation and Transition Plan — Southlake, TX
- ▶ Addison ADA Self-Evaluation and Transition Plan — Addison, TX
- ▶ Coppell ADA Self-Evaluation and Transition Plan — Coppell, TX
- ▶ Flower Mound ADA Self-Evaluation and Transition Plan — Flower Mound, TX
- ▶ Saginaw ADA Self-Evaluation and Transition Plan — Saginaw, TX
- ▶ Denton ADA Self-Evaluation and Transition Plan — Denton, TX
- ▶ Bryan ADA Self-Evaluation and Transition Plan — Bryan, TX
- ▶ College Station ADA Self-Evaluation and Transition Plan — College Station, TX
- ▶ Frisco ADA Self-Evaluation and Transition Plan — Frisco, TX



Kyle Molitor, P.E.

Civil Engineering

Qualifications

Bachelor of Science, Civil Engineering, Texas A&M University

Professional Engineer in Texas (No. 126028)

Kyle provides a full range of civil engineering experience, with an emphasis on education institutions. His experience includes roadway, utility, drainage, and site grading design, as well as construction management. Kyle continuously looks for creative and cost-effective solutions, excels at working through complicated sites and problems, and is recognized among industry peers for providing responsive and thorough client service.

Relevant Recent Experience

- ▶ SportCifx Sports Park Master Planning — Harris County, TX
- ▶ Baytown Public Safety Campus — Baytown, TX
- ▶ New Caney ISD Comprehensive High School #3 — Kingwood, TX
- ▶ Woman's Hospital of Texas New Medical Office Building and Parking Garage — Houston, TX
- ▶ Spring Branch ISD Meadow Wood Elementary School Playground Improvements — Houston, TX
- ▶ Humble ISD Kingwood Middle School Rebuild — Kingwood, TX
- ▶ Fort Bend ISD Middle School #16 — Arcola, TX
- ▶ Conroe ISD York Junior High Classroom Addition — Spring, TX
- ▶ Conroe ISD The Woodlands College Park High School Addition — The Woodlands, TX
- ▶ Conroe ISD Booker T. Washington School Renovation — Conroe, TX
- ▶ Conroe ISD The Woodlands High School Classroom Addition — The Woodlands, TX
- ▶ Conroe ISD High School Renovations Phase II — Conroe, TX
- ▶ Conroe ISD New Junior High in Caney Creek High School Feeder Zone — Conroe, TX



Manu Isaac, P.E.

Traffic Engineering and Wayfinding

Qualifications

Master of Science, Civil Engineering, Texas A&M University

Bachelor of Technology, Civil Engineering, University of Kerala, India

Diploma, Construction Engineering and Management, College of Engineering, Trivandrum, India

Professional Engineer in Texas (No. 87756)

Institute of Transportation Engineers Member

Manu is an experienced and dynamic transportation professional with more than 25 years of service to numerous Texas municipalities, counties, and transit and transportation agencies in the traffic engineering field as a consulting engineer and trusted advisor to his clients. Throughout his career, he has been responsible for managing a wide variety of transportation projects, traffic engineering studies, parking studies, wayfinding signage, modeling and simulation, traffic and intelligent transportation system designs, signal timing, and illumination. Manu has a proven record of building and managing relationships with key clients by delivering high-quality deliverables that exceed client expectations. Manu has successfully managed complex projects within budget and schedule through effective project supervision and by establishing plans to manage multiple teams and tasks. He has provided project teams the guidance and flexibility to perform well through good leadership and positive mentoring.

Relevant Recent Experience

- ▶ TxDOT Houston Loop 274 and SH 35 Corridor-wide Traffic Signal Timing — Angleton, TX
- ▶ Conroe Traffic Engineering Studies — Conroe, TX
- ▶ Frostwood and Bunker Hill Elementary Traffic Circulation — Bunker Hill Village, TX
- ▶ Sugar Land Parks and Trails Wayfinding Sign Designs — Sugar Land, TX
- ▶ Motiva Refinery Traffic Circulation Study — Port Arthur, TX
- ▶ League City Five Corners Intersection Improvement Traffic Study — League City, TX
- ▶ H-GAC Fort Bend Sub-Regional Plan — Fort Bend County, TX
- ▶ Houston Airport System (HAS) Guide Signs and Wayfinding — Houston, TX
- ▶ FY 15/16 Pedestrian and Bicycle Facilities Design — Sugar Land, TX
- ▶ NASA Johnson Space Center and Sonny Carter Training Facility Site Assessment — Houston, TX
- ▶ Halliburton Corporate Campus Traffic Study — Houston, TX
- ▶ 61st Street and Seawall Boulevard Traffic Study and Signal Timing Optimization — Galveston, TX
- ▶ City of Houston Courthouse Parking Study and Lot Reconfiguration — Houston, TX



Brian LaFoy, P.E.,
ENV SP

Structural Engineering

Qualifications

*Master of Engineering, Structures
and Applied Mathematics,
University of Texas at Arlington*

*Bachelor of Science, Civil
Engineering, University of Texas at
Austin*

*Professional Engineer in Texas
(No. 89363), Alabama, Arkansas,
Louisiana, Mississippi, Oklahoma,
and Florida*

Envision Sustainability Professional

Brian has 28 years of design and construction experience on a wide variety of infrastructure projects for both public and private agencies, as well as for contractors. He has extensive experience with pedestrian and multi-use trails, park and recreational facilities, and open space projects. He has worked on projects including masterplans, park developments, urban parks and open spaces, trail systems, complete streets, transit-oriented developments, and other urban development projects. As a part of these projects, he also is experienced with pedestrian and vehicular bridge designs and rehabilitations, public artwork structures, gateway features, retaining walls, pavilions, drainage structures, roundabouts, and other specialty projects. Finally, he is experienced with design / build and other alternative delivery methods as well as projects with limited access, difficult project constraints and timelines, and public safety concerns.

Relevant Recent Experience

- ▶ South Padre Island Wetlands Boardwalks – South Padre Island, TX
- ▶ Lake Fork Boat Ramp Design – Lake Fork, TX
- ▶ Bakersfield Park Trail Improvements – Flower Mound, TX
- ▶ Legacy Park Trail – Plano, TX
- ▶ Flower Mound Park Pedestrian Bridges – Flower Mound, TX
- ▶ Southwest Boulevard Trail – Frisco, TX
- ▶ Burleson Trail – Burleson, TX
- ▶ Eden Road Park – Arlington, TX
- ▶ Windsong Ranch Entrance Sign – The Colony, TX*
- ▶ Traveling Man Sculptural Series – Deep Ellum, Dallas, TX*
- ▶ East Dallas Veloway Phase I Trail Improvements – Dallas, TX*
- ▶ East Dallas Veloway Phase II Trail Improvements – Dallas, TX*
- ▶ East Dallas Veloway Phase III Trail Improvements – Dallas, TX*
- ▶ Community Park and Lake Design – Midlothian, TX*
- ▶ Old Town Plaza Masterplan – Lewisville, TX*
- ▶ Old Town Plaza Urban Park – Lewisville, TX*
- ▶ South Electric Trail – North Richland Hills, TX*
- ▶ Furneaux Creek Trail – Carrollton, TX*

*Projects completed prior to joining Kimley-Horn



Jim Weathers

Lighting and MEP



Qualifications

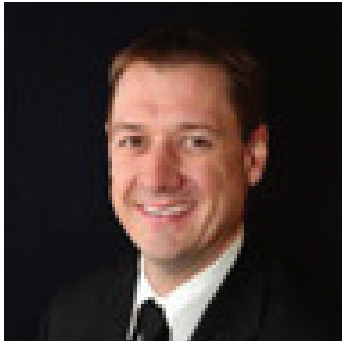
Tarleton State University

University of Texas, Arlington

Jim has over 36 years of experience in the design of electrical and lighting systems including aquatic, athletic, institutional, government, entertainment, commercial, hospitality, retail, industrial, housing, and aviation facilities. He is active in the overall coordination of projects and is responsible for design review and quality control. Jim is responsible for the complete electrical design and overall coordination with the project team.

Relevant Recent Experience

- ▶ Russell Creek and High Point Parks – Plano, TX
- ▶ Camp Bowie Soccer Complex – Brownwood, TX
- ▶ Audubon Park Soccer Field Lighting – Garland, TX
- ▶ Doug Russell and Washington Park Pool – Midland, TX
- ▶ Frisco Athletic Center Aquatic Expansion – Frisco, TX
- ▶ Pirates Bay Phase 1 Expansion – Baytown, TX
- ▶ Rock 'N River Family Aquatic Center Expansion – Round Rock, TX
- ▶ Tietze Park Pool – Dallas, TX
- ▶ Samuell Grand Park Pool – Dallas, TX
- ▶ Lewisville Aquatic Center – Lewisville, TX
- ▶ The “CAP” Water Park – Canyon, TX
- ▶ Fretz Park Pool – Dallas, TX
- ▶ Crawford Park Pool – Dallas, TX
- ▶ Lake Highlands North Park Pool – Dallas, TX
- ▶ Kidd Springs Park Pool – Dallas, TX
- ▶ Harry Stone Pool – Dallas, TX
- ▶ Frontier Pool – Bartlesville, OK
- ▶ Sooner Pool Expansion – Bartlesville, OK
- ▶ Family Aquatic Center – Pauls Valley, OK



Andrew Seamans,
AIA, NCARB
Architecture



Qualifications

Bachelor of Architecture, University of Oklahoma

Licensed Architect in Texas (#No. 23105)

National Council of Architectural Registration Board, Member

Andrew has worked on a wide range of projects over the last 10 years. His experience spans schematic design through construction administration.

Relevant Recent Experience

- ▶ Holmes Aquatic Center — University Park, TX
- ▶ Rock'n River Family Aquatic Center — Round Rock, TX
- ▶ Chisholm Aquatic Center — Hurst, TX
- ▶ Frisco Athletic Center Aquatic Expansion — Frisco, TX
- ▶ Burk Burnett Family Aquatic Center, Burk Burnett, TX
- ▶ Andy Alligator's Fun Park — Norman, OK
- ▶ 808 Skate Park Center — Oklahoma City, OK
- ▶ National Weather Center — Norman, OK
- ▶ Oklahoma History Center — Oklahoma City, OK
- ▶ Pop Diner — Dallas, TX
- ▶ Twin Hills Country Club Remodel — Oklahoma City, OK
- ▶ Quail Creek Golf Clubhouse Remodel — Oklahoma City, OK
- ▶ Volvo Center — Oklahoma City, OK
- ▶ Choctaw Public Schools, High School Stadium — Choctaw, OK
- ▶ House of Healing Campus — Oklahoma City, OK



John Heallen
Arborist



Qualifications

Environmental Courses at Sam Houston State University

Environmental Courses at University of Houston

John is EDI's lead arborist and has worked to preserve trees on numerous projects throughout the greater Houston area and the Country.

Relevant Recent Experience

- ▶ Texas Medical Center Three and Transwestern Properties — Houston, TX
- ▶ Houston Botanical Gardens Tree Preservation Supply and On—Site Transplanting — Houston, TX
- ▶ Houston Zoo Tree Preservation — Houston, TX
- ▶ Uptown Tree Preservation — Houston, TX
- ▶ Houston Downtown Development District Tree Preservation — Houston, TX
- ▶ 9/11 Memorial — New York, NY
- ▶ Custom Grove Tree Farm and Large Tree Transplanting — Batonville, TX
- ▶ Texas A&M Custom Growing Aggie Park Three Transplanting and Preservation — College Station, TX



Scott Bray

Audio Visual Design



Qualifications

Northwest Missouri State University

Infocomm International, Member

Scott has a diverse background of live production shows, touring, and recording. In addition to his design experience, his experience in project management and installation for MGM Grand & Technology West Group enables him to customize his designs according to the client's performance requirements and their budget parameters. Scott has provided design engineering for complex audio systems, video distribution, and control systems

Relevant Recent Experience

- ▶ Northside ISD, Northside Swim Center – Justin, TX
- ▶ Tuluso-Midway ISD, Natatorium Renovations – Corpus Christi, TX
- ▶ Sugarland Performing Arts Center – Sugar Land, TX
- ▶ La Joya ISD, Natatorium – La Joya, TX
- ▶ Lubbock ISD, 4 High School Auditorium Renovations – Lubbock, TX
- ▶ Arlington ISD, 5 High School Auditorium Renovations – Arlington, TX
- ▶ Dallas ISD, 3 High School Auditorium Renovations – Dallas, TX
- ▶ Keller ISD, 4 High School Auditorium Renovations – Keller, TX
- ▶ Taylor County Expo Center – Abilene, TX
- ▶ Henderson Council Chambers – Henderson, NV
- ▶ Nellis Air Force Base – Las Vegas, NV
- ▶ Lou Ruvo Brain Institute – Las Vegas, NV
- ▶ Orpheum Theatre – Memphis, TN
- ▶ Atlanta Braves, Spring Training Facility – North Port, FL
- ▶ Savannah Arena – Savannah, GA
- ▶ University of Arkansas, Donald W. Reynolds Stadium – Fayetteville, AK
- ▶ University of Central Michigan, Champions Center – Mount Pleasant, MI
- ▶ University of Cincinnati, Nippert Stadium – Cincinnati, OH

CONFLICT OF INTEREST QUESTIONNAIRE

For vendor doing business with local governmental entity

FORM CIQ

This questionnaire reflects changes made to the law by H.B. 23, 84th Leg., Regular Session.

This questionnaire is being filed in accordance with Chapter 176, Local Government Code, by a vendor who has a business relationship as defined by Section 176.001(1-a) with a local governmental entity and the vendor meets requirements under Section 176.006(a).

By law this questionnaire must be filed with the records administrator of the local governmental entity not later than the 7th business day after the date the vendor becomes aware of facts that require the statement to be filed. See Section 176.006(a-1), Local Government Code.

A vendor commits an offense if the vendor knowingly violates Section 176.006, Local Government Code. An offense under this section is a misdemeanor.

OFFICE USE ONLY

Date Received

1 Name of vendor who has a business relationship with local governmental entity.

Kimley-Horn and Associates, Inc.

2 ☐ Check this box if you are filing an update to a previously filed questionnaire. (The law requires that you file an updated completed questionnaire with the appropriate filing authority not later than the 7th business day after the date on which you became aware that the originally filed questionnaire was incomplete or inaccurate.)

3 Name of local government officer about whom the information is being disclosed.

N/A

Name of Officer

4 Describe each employment or other business relationship with the local government officer, or a family member of the officer, as described by Section 176.003(a)(2)(A). Also describe any family relationship with the local government officer. Complete subparts A and B for each employment or business relationship described. Attach additional pages to this Form CIQ as necessary.

A. Is the local government officer or a family member of the officer receiving or likely to receive taxable income, other than investment income, from the vendor?

☐ Yes

☐ No

B. Is the vendor receiving or likely to receive taxable income, other than investment income, from or at the direction of the local government officer or a family member of the officer AND the taxable income is not received from the local governmental entity?

☐ Yes

☐ No

5 Describe each employment or business relationship that the vendor named in Section 1 maintains with a corporation or other business entity with respect to which the local government officer serves as an officer or director, or holds an ownership interest of one percent or more.

N/A

6 ☐ Check this box if the vendor has given the local government officer or a family member of the officer one or more gifts as described in Section 176.003(a)(2)(B), excluding gifts described in Section 176.003(a-1).

7 *Dawn K. Faller, P.E.*
Signature of vendor doing business with the governmental entity

1/26/2022

Date

CERTIFICATE OF INTERESTED PARTIES

FORM 1295

1 of 1

Complete Nos. 1 - 4 and 6 if there are interested parties.
Complete Nos. 1, 2, 3, 5, and 6 if there are no interested parties.

OFFICE USE ONLY CERTIFICATION OF FILING

1 Name of business entity filing form, and the city, state and country of the business entity's place of business.
Kimley-Horn and Associates, Inc.
Dallas, TX United States

Certificate Number:
2022-843948

Date Filed:
01/26/2022

Date Acknowledged:

2 Name of governmental entity or state agency that is a party to the contract for which the form is being filed.
City of Angleton

3 Provide the identification number used by the governmental entity or state agency to track or identify the contract, and provide a description of the services, goods, or other property to be provided under the contract.
P-202112
Landscape Architecture design services for the renovation of Veterans Park

4	Name of Interested Party	City, State, Country (place of business)	Nature of interest (check applicable)	
			Controlling	Intermediary
	McEntee, David L	Dallas, TX United States	X	
	Lefton, Steve	Dallas, TX United States	X	
	Flanagan, Tammy	Dallas, TX United States	X	
	Cook, Richard N	Dallas, TX United States	X	

5 Check only if there is NO Interested Party.

☐

6 UNSWORN DECLARATION

My name is AARON RADER, and my date of birth is 06/24/1981.

My address is 11700 KATY FWY, SUITE 800, HOUSTON, TX, 77079, US.
(street) (city) (state) (zip code) (country)

I declare under penalty of perjury that the foregoing is true and correct.

Executed in HARRIS County, State of TEXAS, on the 26TH day of JANUARY, 2022.
(month) (year)

Aaron K Rader, P.E.

Signature of authorized agent of contracting business entity
(Declarant)



ADDENDUM NO. 1

January 4, 2022

**City of Angleton – Veterans Park Renovation RFQ. NO. P-202112
Angleton, TX 77515**

TO: ALL INTERESTED FIRMS OF RECORD

This addendum clarifies the Request for Qualification requirements for the solicitation referenced above with a termination date of February 1, 2022. This addendum clarifies that the term “architecture” found under Schematic Design A. 10., Design Development B.1. and B.2., and Construction Document A. 6. was mentioned as a catchall to include other forms of architecture like sustainable/green solutions, but structural engineering and landscape architecture will be the primary focus in the Request for Qualification responses.

You may contact the Director of Parks & Recreation with any questions you may have with the contact information below.

Megan Mainer
901 S. Velasco
Angleton, TX 77515
979.849.4364, EXT 4101
mmainer@angleton.tx.us

Aaron Rader, P.E. | Authorized to bind the firm



ADDENDUM NO. 2

January 13, 2022

**City of Angleton – Veterans Park Renovation RFQ. NO. P-202112
Angleton, TX 77515**

TO: ALL INTERESTED FIRMS OF RECORD

This addendum clarifies the Request for Qualification requirements for the solicitation referenced above with a termination date of February 1, 2022. This addendum clarifies the following questions:

1) Is there a page limit for the SOQ submittals?

ANSWER: Please keep all submittals to no more than twenty (20) pages.

2) Will you need both architectural and structural work?

ANSWER: We may need both architectural and structural work to address both design and safety but this will depend on solidified park components.

3) Page 12 references using “tables” that correspond to the outline provided. Does this mean a Table of Contents? If not, how would you like to see tables used?

ANSWER: Yes, we’re referring to a Table of Contents.

You may contact the Director of Parks & Recreation with any questions you may have with the contact information below.

Megan Mainer
901 S. Velasco
Angleton, TX 77515
979.849.4364, EXT 4101
mmainer@angleton.tx.us

Aaron Rader, P.E. | Authorized to bind the firm



ADDENDUM NO. 3

January 19, 2022

**City of Angleton – Veterans Park Renovation RFQ. NO. P-202112
Angleton, TX 77515**

TO: ALL INTERESTED FIRMS OF RECORD

This addendum clarifies the Request for Qualification requirements for the solicitation referenced above with a termination date of February 1, 2022. This addendum clarifies the following questions:

1) *What will not be counted* in the 20-page limit?

ANSWER:

Cover Page-Back Page
Transmittal Letter
Table of Contents
Divider Tabs
Required Forms
Resumes

You may contact the Director of Parks & Recreation with any questions you may have with the contact information below.

Megan Mainer
901 S. Velasco
Angleton, TX 77515
979.849.4364, EXT 4101
mmainer@angleton.tx.us

Aaron Rader, P.E. | Authorized to bind the firm



ADDENDUM NO. 4

January 25, 2022

**City of Angleton – Veterans Park Renovation RFQ. NO. P-202112
Angleton, TX 77515**

TO: ALL INTERESTED FIRMS OF RECORD

This addendum clarifies the Request for Qualification requirements for the solicitation referenced above with a termination date of February 1, 2022. This addendum clarifies the following questions:

1) Is the conceptual plan that was included in the RFQ the direction the City of Angleton will want the successful bidder to follow or was this included as an example of the elements that are to be considered for the design? We want to confirm that the design team will have the latitude to develop conceptual plan options and not be already locked in on this concept.

ANSWER: The conceptual plan included in the RFQ was included as an example of the elements that are to be considered for the design. The selected firm and design team will have the latitude to develop conceptual plan options for this project

2) Pages 12 and 13 list Items A through F as sections to be included in our response. Page 13 has the Evaluation and Selection Process matrix that only has Items A through E. Item E is labeled References while in the text above the matrix on page 13 states that Item E is the Project Approach. Can you confirm if the list of Items A through F are the items required for submission? Will the Evaluation and Selection Process matrix be updated to include all six (6) of the items with corresponding evaluation percentages?

ANSWER: Yes, items A through F will be required for firm submissions to be considered. The Evaluations and Selection Process matrix has been updated as follows:

A – Cover Letter	5%
B – Project Team	15%
C – Firm Capabilities	20%
D – Prior Experience	25%
E – Project Approach	30%
F – References	5%
TOTAL	100%

You may contact the Director of Parks & Recreation with any questions you may have with the contact information below.

Megan Mainer
901 S. Velasco
Angleton, TX 77515
979.849.4364, EXT 4101
mmainer@angleton.tx.us

A handwritten signature in blue ink that reads "Aaron K Rader, P.E.". The signature is written in a cursive style with a large initial 'A' and 'R'.

Aaron Rader, P.E. | Authorized to bind the firm



ADDENDUM NO. 5

January 26, 2022

**City of Angleton – Veterans Park Renovation RFQ. NO. P-202112
Angleton, TX 77515**

TO: ALL INTERESTED FIRMS OF RECORD

This addendum clarifies the Request for Qualification requirements for the solicitation referenced above with a termination date of February 1, 2022. This addendum clarifies the following questions:

1) Page 2 of the RFQ says that 7 copies and one electronic version must be submitted. Page 11 says that one original copy and one pdf (electronic) version must be submitted, and that the original must be manually signed by an officer of the company. If you can clarify the requirements for submission, it would be appreciated.

ANSWER: Please submit one original copy and one pdf (electronic) version. The original must be manually signed by an officer of the company.

You may contact the Director of Parks & Recreation with any questions you may have with the contact information below.

Megan Mainer
901 S. Velasco
Angleton, TX 77515
979.849.4364, EXT 4101
mmainer@angleton.tx.us

Aaron Rader, P.E. | Authorized to bind the firm