

DEMOLISH EXISTING STRUCTURE
FOR NEW PARKING LOT

PERIMETER FENCE

SECURE GATE

BUILDING
ENTRANCE

GUEST PARKING

SECURE ACCESS

STAFF PARKING

MAINTENANCE
YARD ACCESS

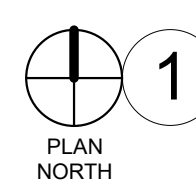
MAINTAIN ACCESS TO
EQUIPMENT SHED

COVERED BREEZE WAY

COVERED AREA

CHEMICAL STORAGE

COVERED AREA



1 PROPOSED GROUND FLOOR PLAN

1/8" = 1'-0"

OFFICE AREA	10,435 SQ. FT.
EQUIPMENT STORAGE & BREEZEWAY	6,467 SQ. FT.
TOTAL AREA	16,902 SQ. FT.

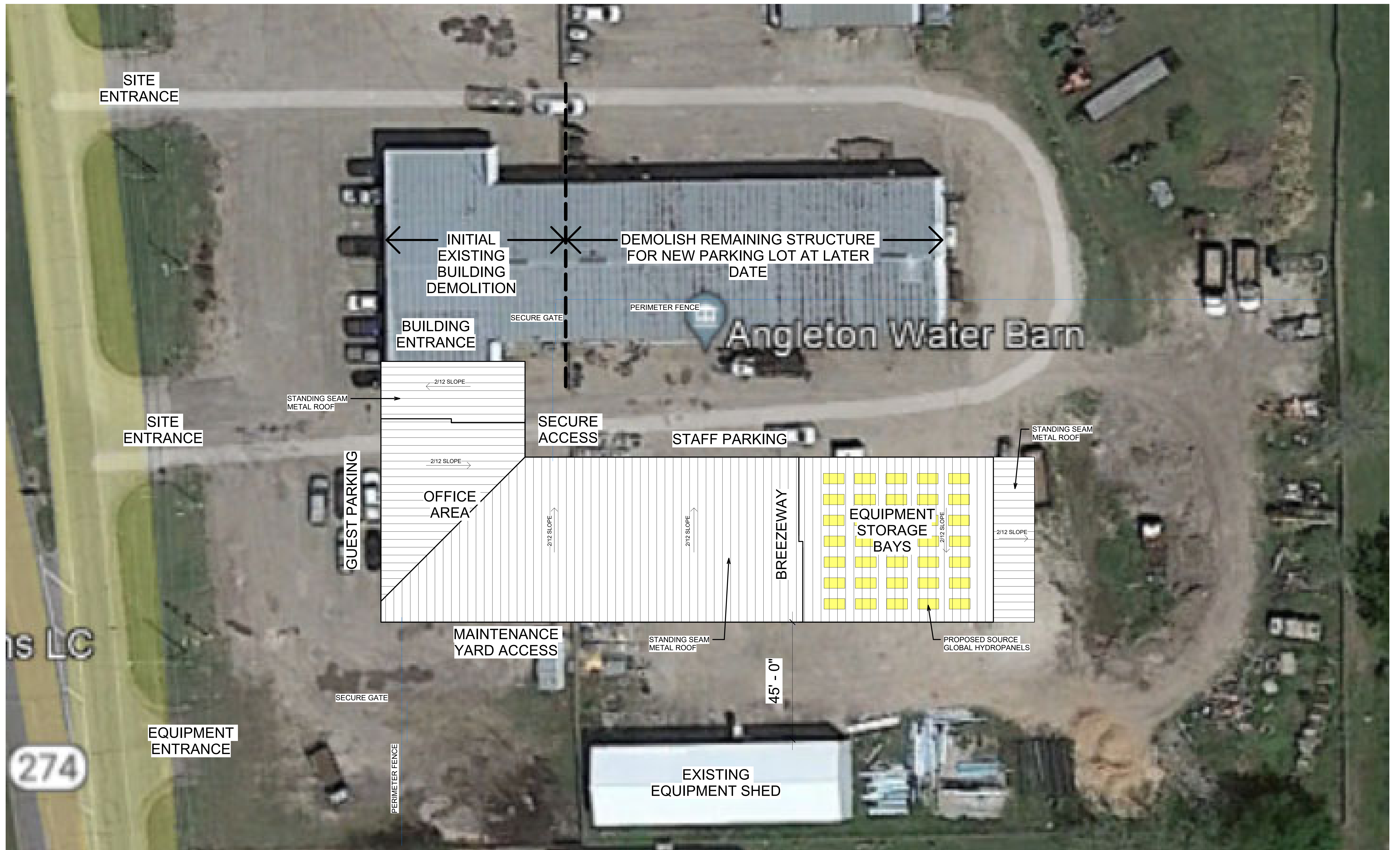
King Municipal Operations Center - Angleton



PROPOSED GROUND FLOOR PLAN

05/31/2023

5/31/2023 2:20:31 PM



1 PROPOSED SITE PLAN
1/16" = 1'-0"

King Municipal Operations Center - Angleton



PROPOSED SITE PLAN

05/31/2023

5/31/2023 4:20:31 PM