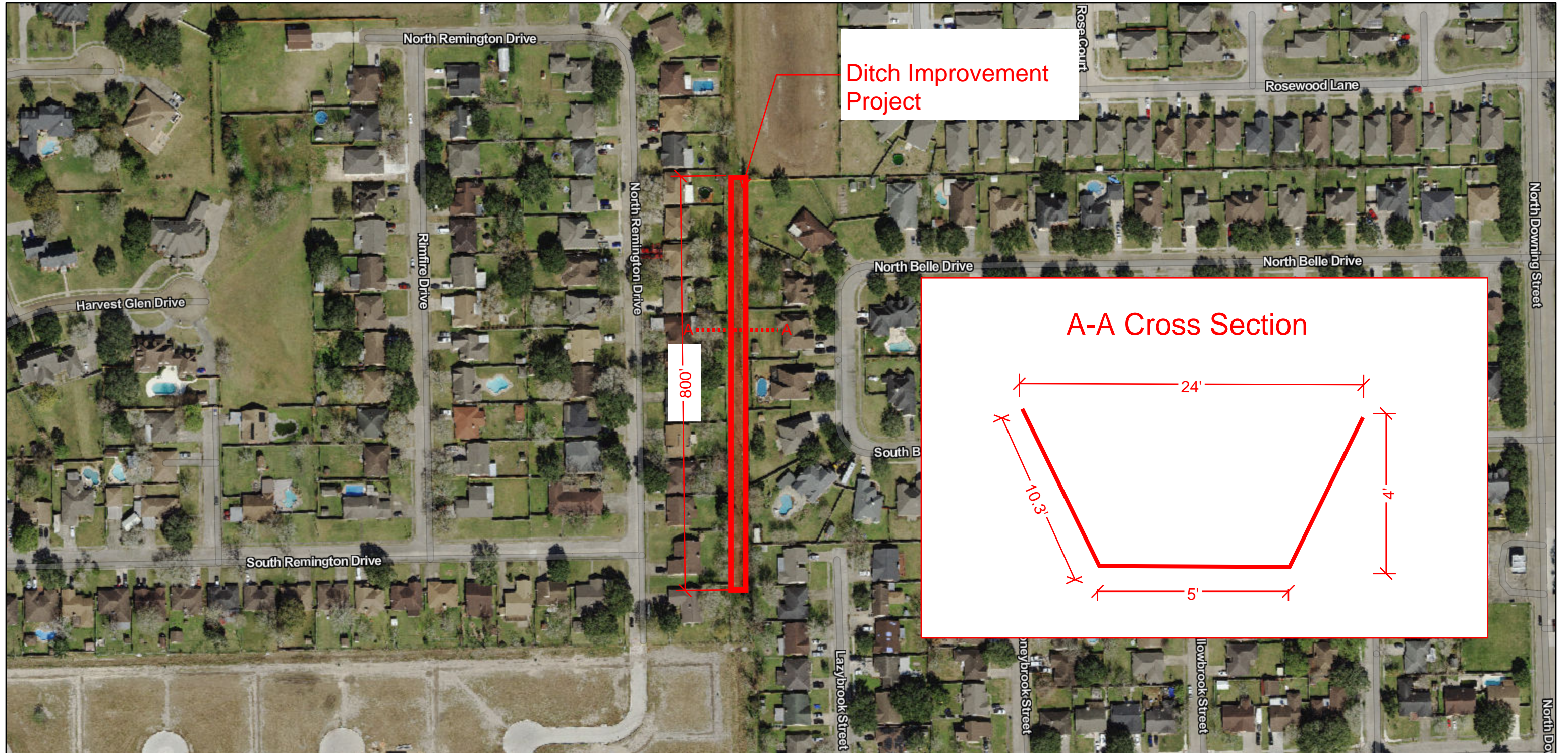


Proposed Ditch Improvement Location



Map data © OpenStreetMap contributors, Microsoft, Facebook, Inc. and its affiliates, Esri Community Maps contributors, Map layer by Esri, Sources: Esri, Airbus DS, USGS, NGA, NASA, CGIAR, N Robinson, NCEAS, NLS, OS, NMA, Geodatastyrelsen, Rijkswaterstaat, GSA, Geoland, FEMA, Intermap and the GIS user

BUDGETARY COST FOR REMMINGTON STORM DRAINAGE					
CITY OF ANGLETON					
FEBRUARY, 2024					
ITEM NO.	ITEM DESCRIPTION	UNIT	QUAN.	UNIT PRICE	TOTAL AMOUNT
1	5" thick slope paving	S.Y.	2,275	\$ 160.00	\$ 364,000.00
2	Ditch Regrading #2	LF	800	\$ 15.00	\$ 12,000.00
SUB-TOTAL ITEMS					\$ 376,000.00
20% CONTINGENCY					\$ 75,200.00
5% MARKET VOLATILITY					\$ 18,800.00
TOTAL OPINION OF PROBABLE CONSTRUCTION COST					\$ 470,000.00
DESIGN, BID PHASE, CONSTRUCTION PHASE					\$ 94,000.00
TOPOGRAPHIC SURVEY SERVICES					\$ 7,200.00
GEOTECHNICAL SERVICES					\$ 3,900.00
STORMWATER POLLUTION PREVENTION SERVICES					\$ 5,000.00
TRAFFIC CONTROL SERVICES					\$ 8,000.00
TOTAL ENGINEERING FEES					\$ 118,100.00
TOTAL PROJECT COST					\$ 588,100.00

**This estimate includes a 5% Market Volatility.*

***Any opinion of construction costs prepared by HDR is supplied for the general guidance of the Client only. Since HDR has no control over competitive bidding or market conditions, HDR cannot guarantee the accuracy of such opinions as compared to contract bids or actual costs to*