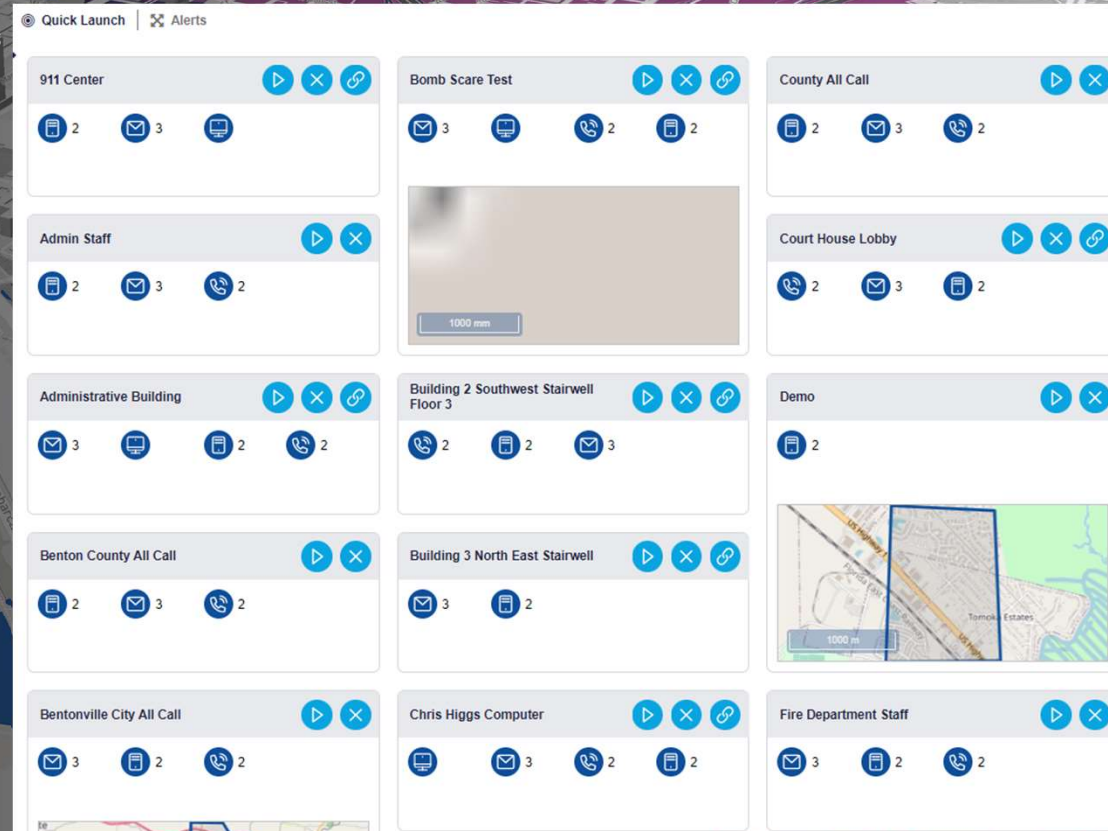




Genasys™

Ease of Use

- Unlimited predefined templates
- Quick launch templates can be activated in seconds
- Intuitive interface for easy on the fly use
- Simultaneous selection of employee and citizens
- Easy data uploads and integrations



The screenshot displays the 'Quick Launch' interface of the Genasys system. It features a grid of 12 templates, each with a title, a set of icons representing different actions (such as play, stop, refresh, and search), and a small map or image preview. The templates are arranged in a 4x3 grid. The top row includes '911 Center', 'Bomb Scare Test', and 'County All Call'. The second row has 'Admin Staff', a blurred image placeholder, and 'Court House Lobby'. The third row contains 'Administrative Building', 'Building 2 Southwest Stairwell Floor 3', and 'Demo'. The bottom row includes 'Benton County All Call', 'Building 3 North East Stairwell', 'Bentonville City All Call', 'Chris Higgs Computer', and 'Fire Department Staff'. Each template has a unique set of icons and a small map or image preview. The interface is clean and organized, with a 'Quick Launch' and 'Alerts' header at the top.

Mapping

Seamless integration with **ESRI ArcGIS**

All **ESRI** customer maps available and updated in real time

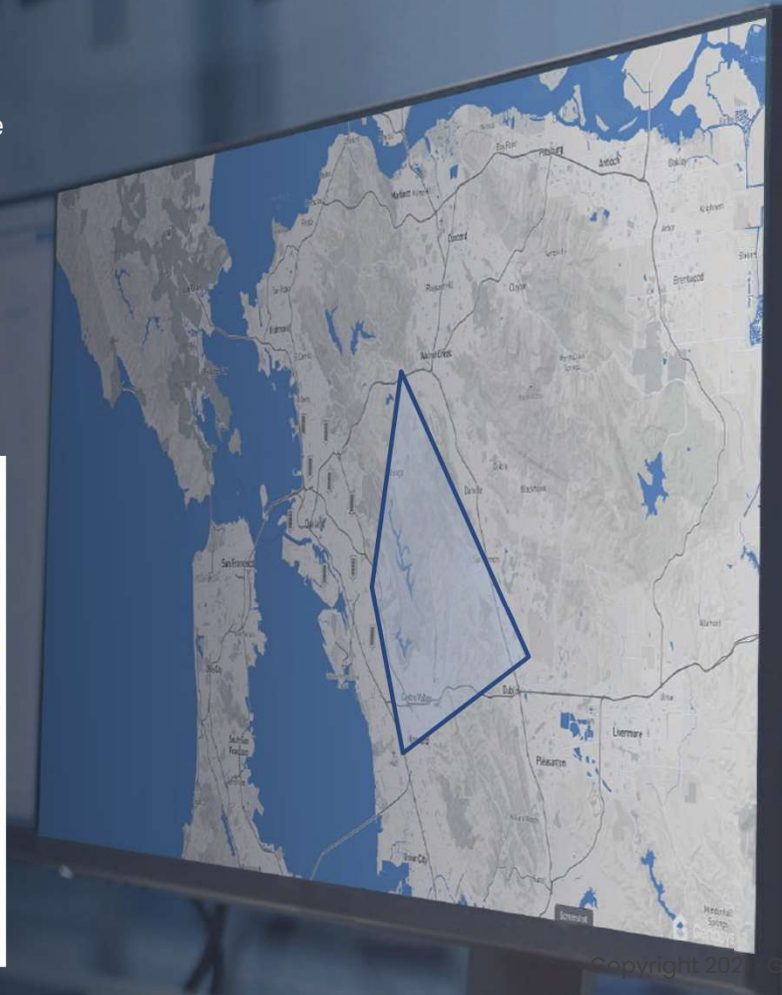
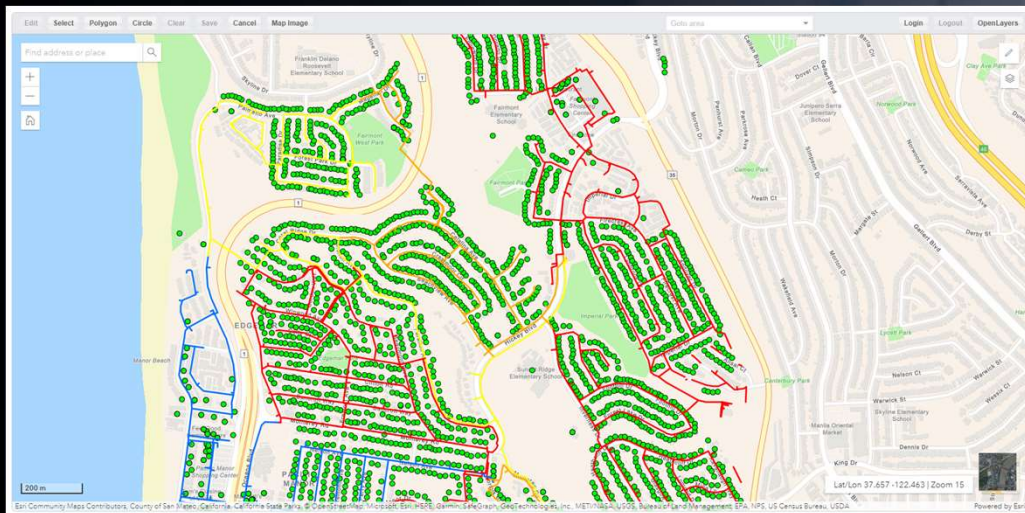
Live **Traffic** and **Weather**

View all contact points on map before notification is sent

Decide what map layers to view with easy toggle

Shapefile import and **Web Map Service** integration

User **definable area** map

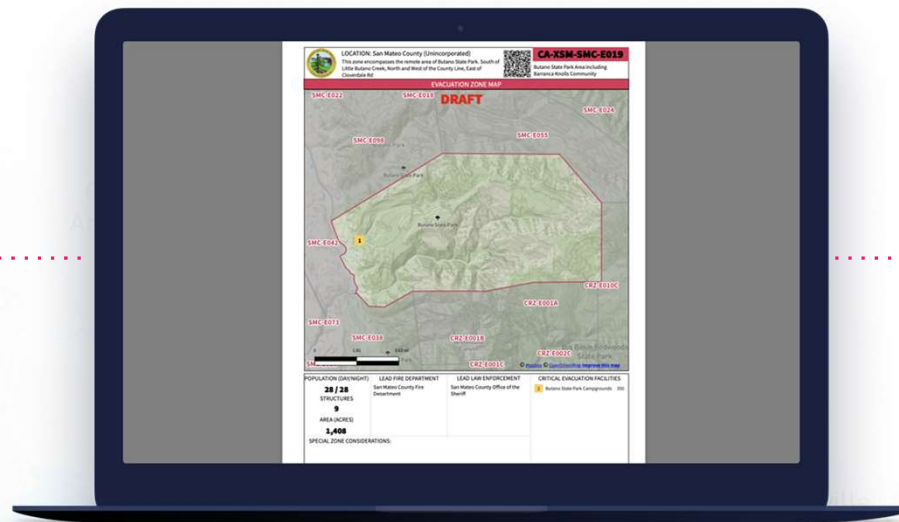


Pre-planning – Intelligent Zones

Hyper-Local Knowledge Increases Operational Efficiency



Hours



Minutes

"During an Evacuation, speed is everything. Zonehaven has decreased our reflex time to order an evacuation and communicate updates instantly, saving lives."

Military Ocean

Nichols

Lower Sherman