



# **City of Angleton ADA Self-Evaluation and Transition Plan**

**Kimley»Horn**

Expect More. Experience Better.




 **ACCESSOLOGY**

# Importance of an ADA Self-Evaluation and Transition Plan




- Required by law (Title II of the Americans with Disabilities Act)
- Failure to comply with the ADA can result in:
  - Withholding of federal and state funds – TxDOT surveying municipalities in Texas to determine if Title II requirements have been met
  - Settlement agreement with Department of Justice
  - Private lawsuits
- Lack of accessibility directly impacts the lives of Angleton residents and visitors

# Title II Requirements (§35.106; §35.107)

Requirement	Status
Provide notice to the public about the ADA	 (Phase 1)
Designate an employee to oversee Title II compliance	 (Phase 1)
Adopt and publish a Title II grievance procedure	 (Phase 1)


# Title II Requirements (§35.105)



Requirement	Status
Evaluate current services, policies, and practices	Phase 1 + Future Phase(s)
Modify current services, policies, and practices if non-compliant	Future Phase(s)
Provide opportunity to interested persons to participate in self-evaluation process by submitting comments	 (Phase 1)
Keep copy of self-evaluation on file for at least 3 years after completion	On-going

# Title II Requirements (§35.150)



Requirement	Status
Operate each service, program, or activity so that it is readily accessible and useable by individual with disabilities	On-going
Develop (and maintain) a transition plan for needed structural changes	Phase 1 + Future Phase(s)
Provide opportunity to interested persons to participate in the development of the transition plan by submitting comments	 (Phase 1)
Provide a schedule for providing curb ramps	Phase 1 + Future Phase(s)

# Transition Plan Requirements (§35.150)



Requirement	Status
Identify physical obstacles in each facility that limit accessibility of its programs or activities to individuals with disabilities	Phase 1 + Future Phase(s)
Describe in detail the methods that will be used to make the facilities accessible	Phase 1 + Future Phase(s)
Specify the schedule to achieve Title II compliance and steps that will be taken each year of transition period	Phase 1 + Future Phase(s)
Indicate office responsible for implementation of the plan	Phase 1



# Phase 1: Current Phase

- Self-Evaluation
  - Establish external ADA Advisory Committee
  - Review select City programs, services, and activities
  - Evaluate select City facilities
- Transition Plan Development
- Public Outreach

# Issues – Programs, Services, and Activities



- Meeting Agendas and Minutes
  - Text changes needed related to effective communication requests, the City's non-discrimination policy, and other clarifications
- Employment Practices
  - No issues identified



# Issues – Programs, Services, and Activities

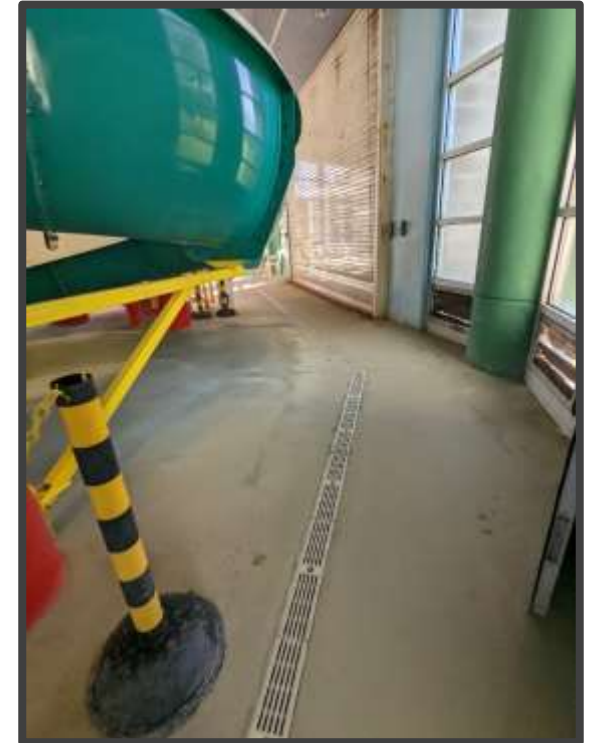


- Emergency Management Documents
  - Additional information needed to address citizens with disabilities:
    - Responsibilities of Emergency Management Coordinator team
    - Planning and preparation efforts
    - Volunteer training or efforts
- Design Standards
  - Applicable standards/guidelines need to be incorporated by reference
  - Proposed standards need to be updated for consistency with federal standards
  - Additional clarification/details needed related to accessibility

# Issues – Rec Center and Pool

## Most common building issues:

- No accessible route to some of the work-out equipment
- Slopes along the accessible route
- Protruding objects
- Non-compliant benches



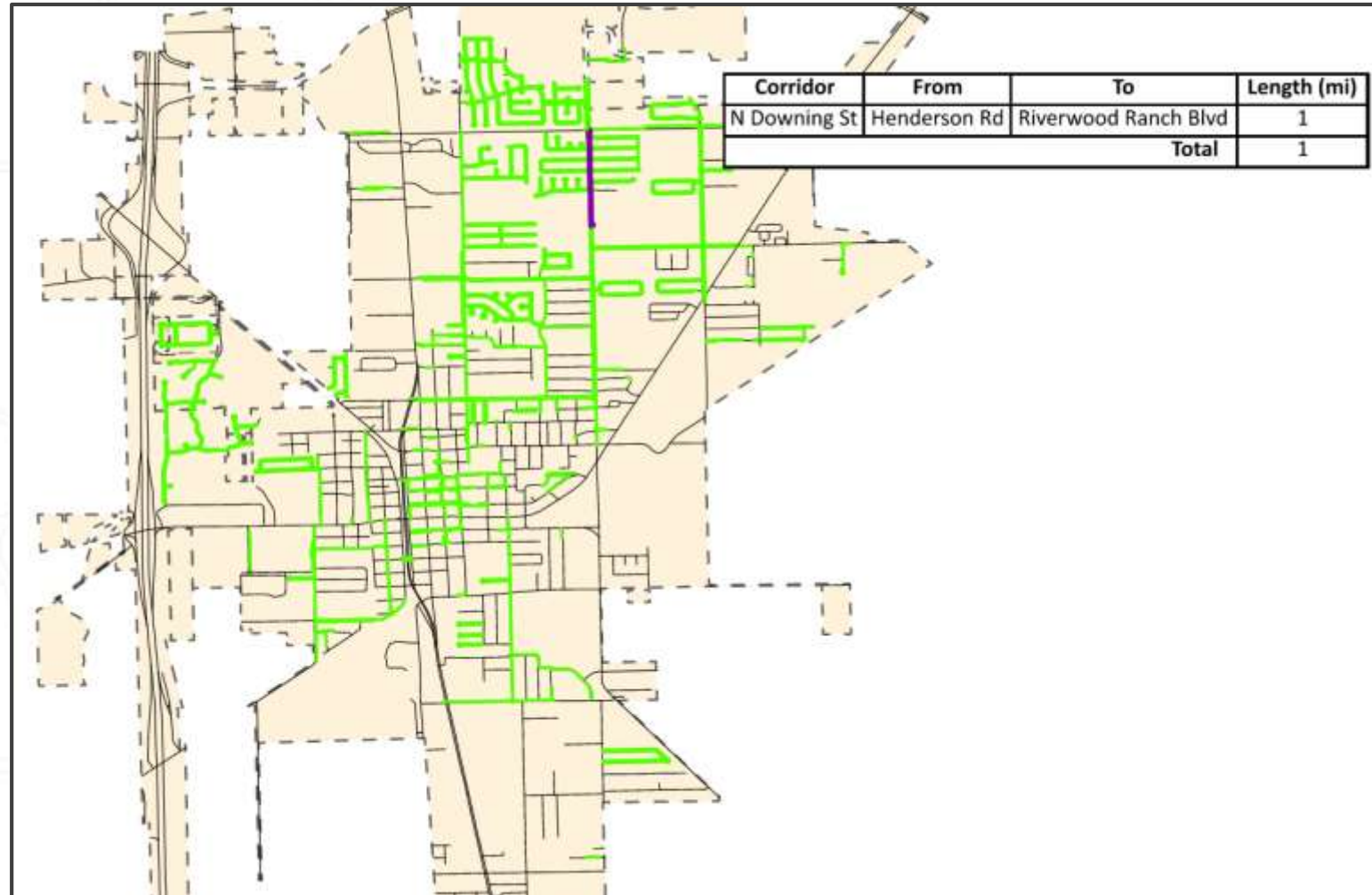
# Issues – Parks

## Most common park issues:

- Non-compliant parking
- Running slopes and cross slopes along accessible routes
- No access to amenities
- Non-compliant playground or playground equipment



# Phase 1: Evaluated Sidewalk Corridors





# Issues – N. Downing Street

## Most common sidewalk issues:

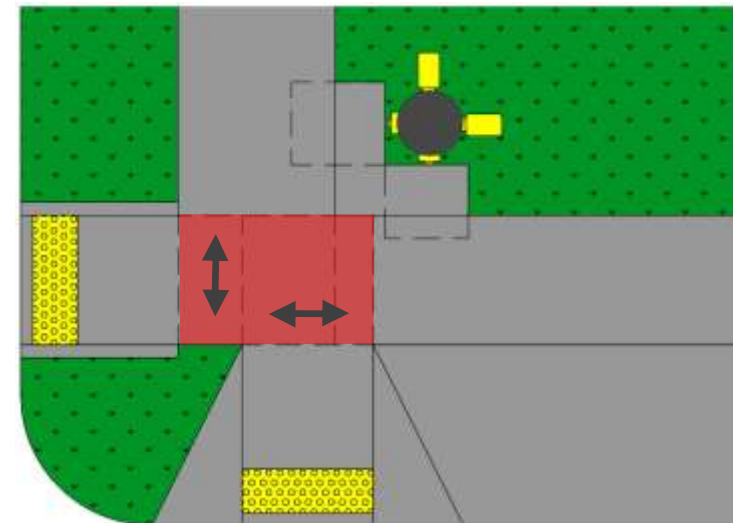
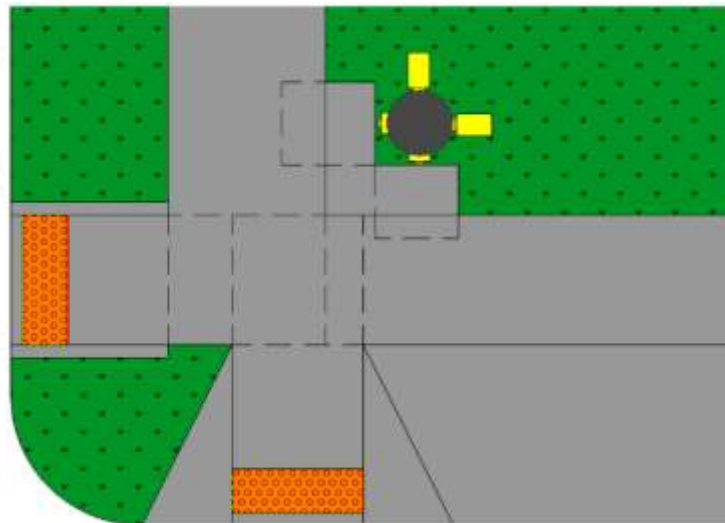
- Sinking, cracking, or ponding
- Utility and vegetation conflicts
- Sidewalk cross slopes  $> 2\%$



# Issues – N. Downing Street

## Most common curb ramp issues:

- Detectable warning surface does not exist
- Excessive curb ramp turning space (landing) cross slope
- Ponding in curb ramp, turning space (landing), or flares

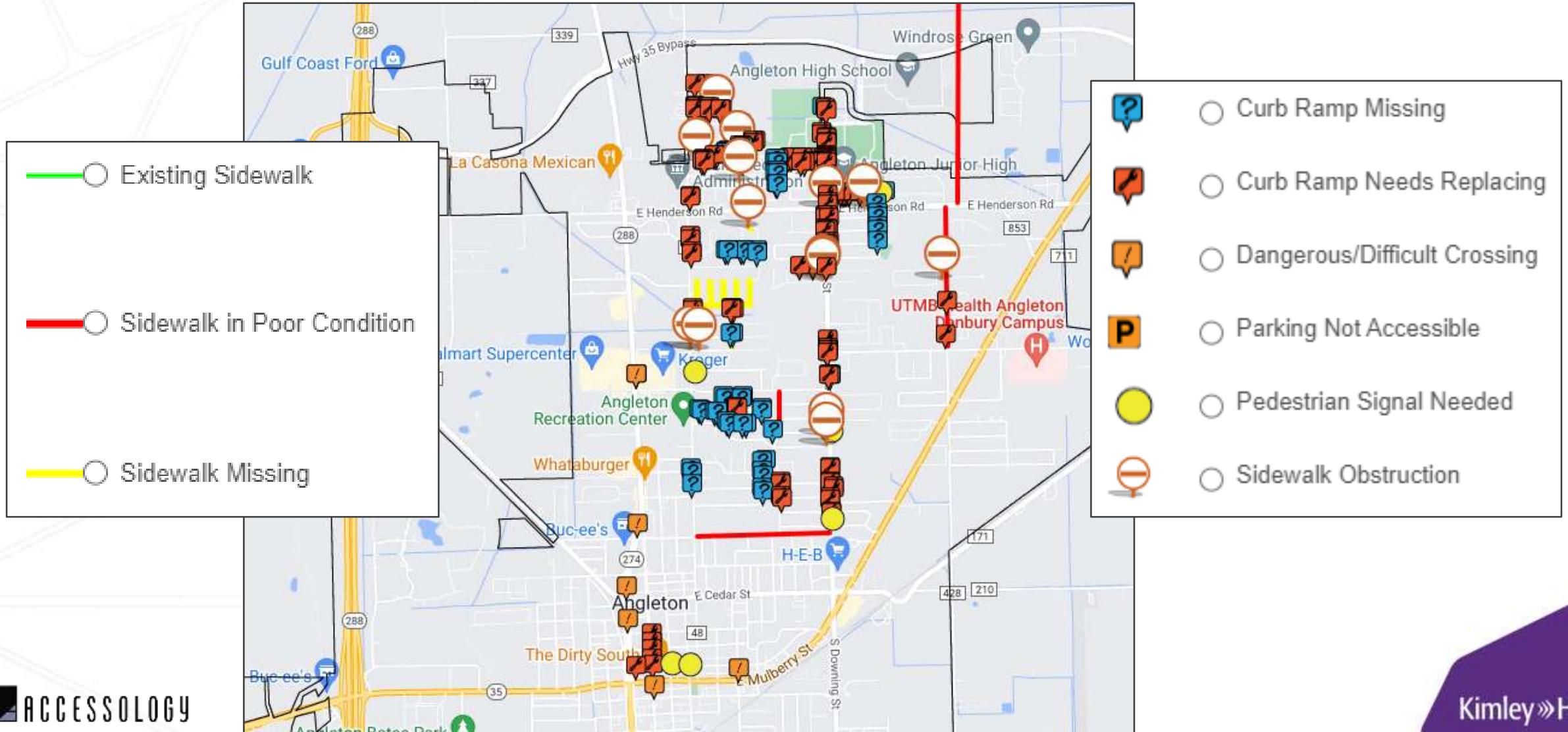


# Public Outreach

- Town Hall Meetings
  - Questions and concerns
  - How is the City doing regarding accessibility?
  - Suggested improvements
- Web Survey
- Web Map



# Public Input Web Map



# Transition Plan Development



Prioritize improvements



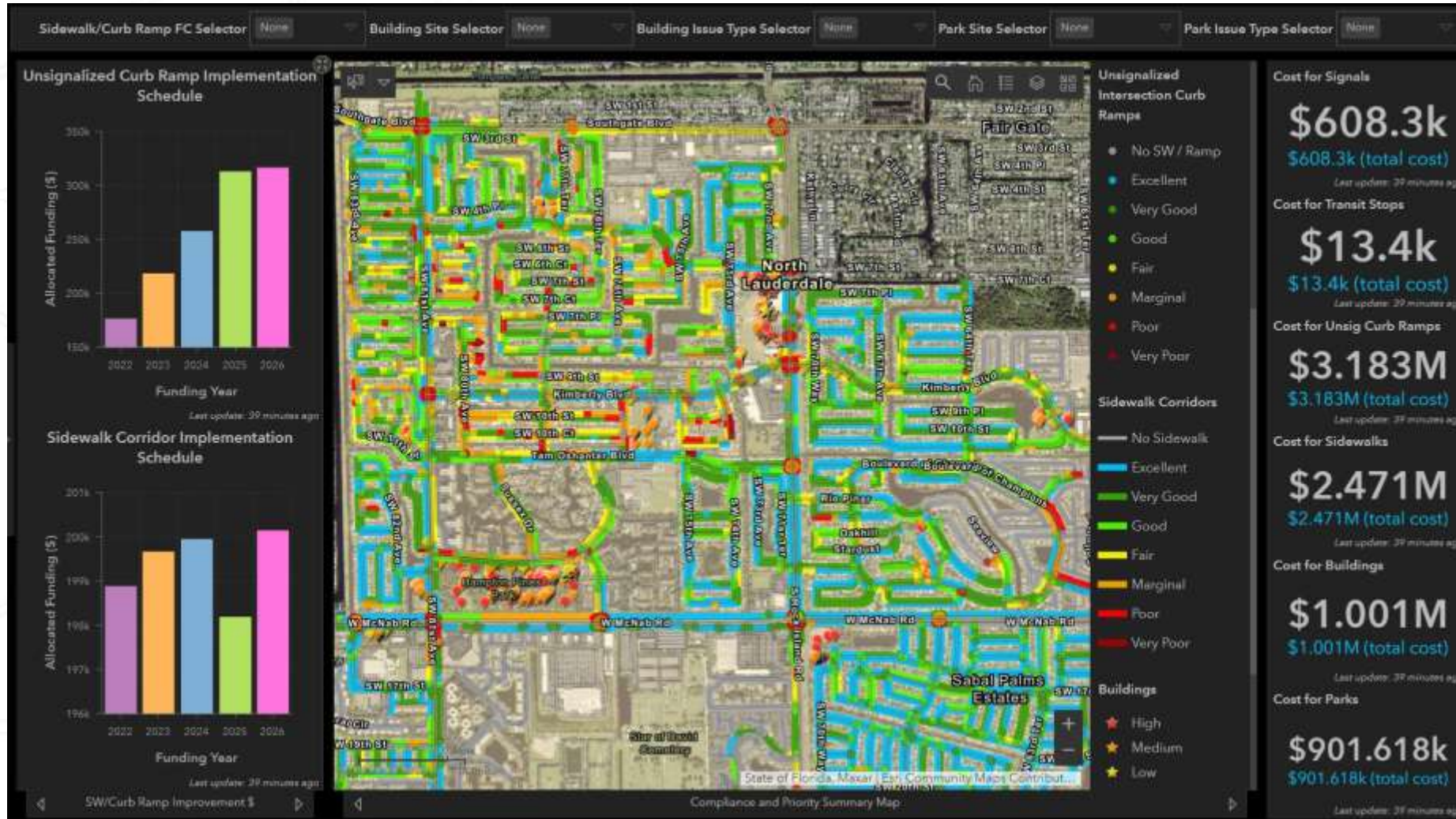
Develop improvement costs



Develop implementation schedule



# » KADA Dashboard



# Example 5-Year Implementation Schedule for Evaluated Facilities



Facility Type	Estimated Costs	Implementation Schedule (years)	Approximate Annual Budget*
Buildings	\$ 26,000	5	\$ 6,000
Parks	\$ 484,000	5	\$ 97,000
Public Rights-of-Way Sidewalk	\$ 258,000	5	\$ 52,000
Public Rights-of-Way Unsignalized Intersections	\$ 273,000	5	\$ 55,000
<b>Total</b>	<b>\$1,041,000</b>		
<b>Total Annual Budget</b>			<b>\$210,000</b>

*\*Estimated costs have been rounded*

# Future Phases

- Evaluate remaining City services, policies, and practices
- Modify City services, policies, and practices if determined to be non-compliant
- Evaluate remaining facilities:
  - 7 buildings
  - 65 miles of sidewalk corridors and associated pedestrian street and driveway crossings and curb ramps
- Update Transition Plan with future phase findings
- ADA compliance monitoring and tracking
- Staff training





# Questions?

**Kimley»Horn**  
Expect More. Experience Better.