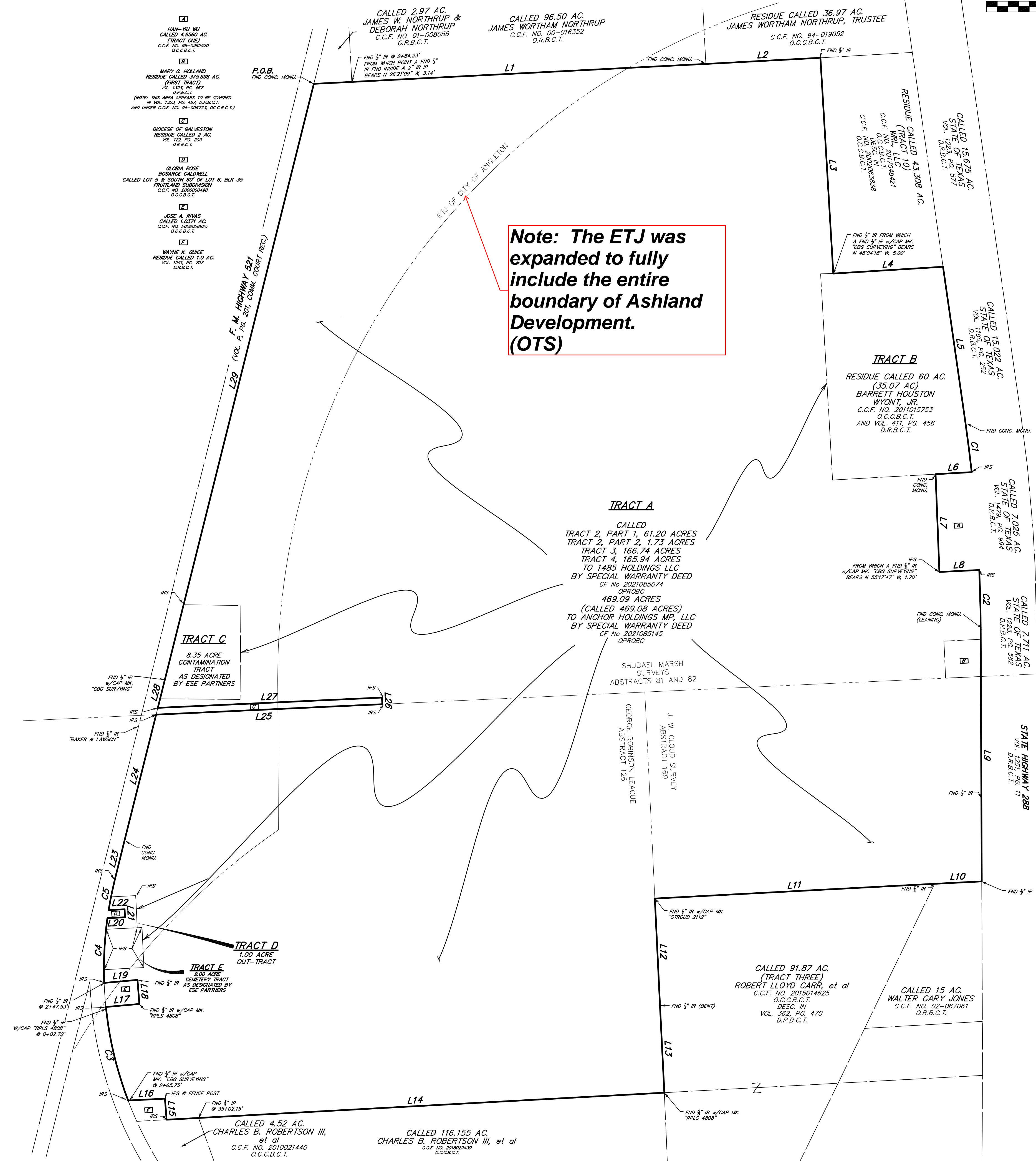


NORTH
SCALE: 1" = 400'



Note: The ETJ was expanded to fully include the entire boundary of Ashland Development. (OTS)



LINE	BEARING	DISTANCE
L1	N 87°05'19" E	2947.41'
L2	N 86°57'34" E	861.64'
L3	S 03°24'10" E	1622.24'
L4	N 86°26'35" E	825.98'
L5	S 08°10'09" E	1184.70'
L6	S 86°48'09" W	211.50'
L7	S 02°12'28" E	734.87'
L8	N 87°09'47" E	299.63'
L9	S 00°14'46" E	1890.37'
L10	S 87°02'34" W	354.62'
L11	S 86°59'15" W	2103.32'
L12	S 02°44'56" E	803.62'
L13	S 02°50'23" E	655.23'
L14	S 86°53'29" W	3742.61'
L15	N 04°36'11" W	158.90'
L16	S 87°02'13" W	277.30'
L17	N 84°54'13" E	252.52'
L18	N 04°18'51" W	181.64'
L19	S 84°43'22" W	251.68'
L20	N 87°06'39" E	132.68'
L21	N 02°53'20" W	60.00'
L22	S 87°06'39" W	120.56'
L23	N 1°35'59" E	302.34'
L24	N 14°05'31" E	973.60'
L25	N 87°21'22" E	1700.63'
L26	N 02°38'58" W	50.00'
L27	S 87°21'22" W	1686.60'
L28	N 14°05'31" E	217.09'
L29	N 14°02'37" E	4611.00'

CURVE	RADIUS	DELTA ANGLE	ARC LENGTH	CHORD BEARING	CHORD LENGTH
C1	11249.16'	1°53'42"	372.03'	S 07°13'18" E	372.02'
C2	11249.16'	2°18'29"	446.63'	S 01°23'01" E	446.60'
C3	2776.40'	14°56'06"	723.70'	N 13°22'44" W	721.66'
C4	2776.40'	10°03'42"	487.56'	N 02°51'09" E	486.94'
C5	2776.40'	4°50'12"	234.37'	N 11°33'54" E	234.31'

TRACT A	469.09 ACRES
	61.20 ACRES
	1.73 ACRES
	166.74 ACRES
	165.94 ACRES
TRACT B	35.07 ACRES
TRACT C	8.35 ACRES
TRACT D	2.0 ACRES
TRACT E	1.0 ACRE
TOTAL	911.12 ACRES

EXHIBIT
OF
ASHTON GRAY DEVELOPMENT TRACT
BEING
911.12 ACRES
OUT OF THE
SHUBAEL MARSH SURVEYS, ABSTRACTS 81 & 82
GEORGE ROBINSON LEAGUE, ABSTRACT 126
J. W. CLOUD SURVEY, ABSTRACT 169
BRAZORIA COUNTY, TEXAS
FEBRUARY 2022

