

# LAKESIDE PARK

1234 Enchanted Oaks Drive, Angleton, TX 77515

## AVAILABLE AMENITIES

---

- ✓ Meets stage requirements (20' to 24' wide x 16' deep)
- ✓ Green Room (Concession area)
- ✓ Restrooms
- ✓ Parking
- ✓ Vendor parking
- ✓ Open space for seating
- ✓ Lighting

## UNAVAILABLE AMENITIES

---

- ✗ Adequate electrical – need a mobile electrical board for high-arcing instruments
- ✗ Stage height requirements are 18-24' and the Lakeside Park stage is 13'6"; this may not be a concern since the stage at Lakeside Park has existing lighting

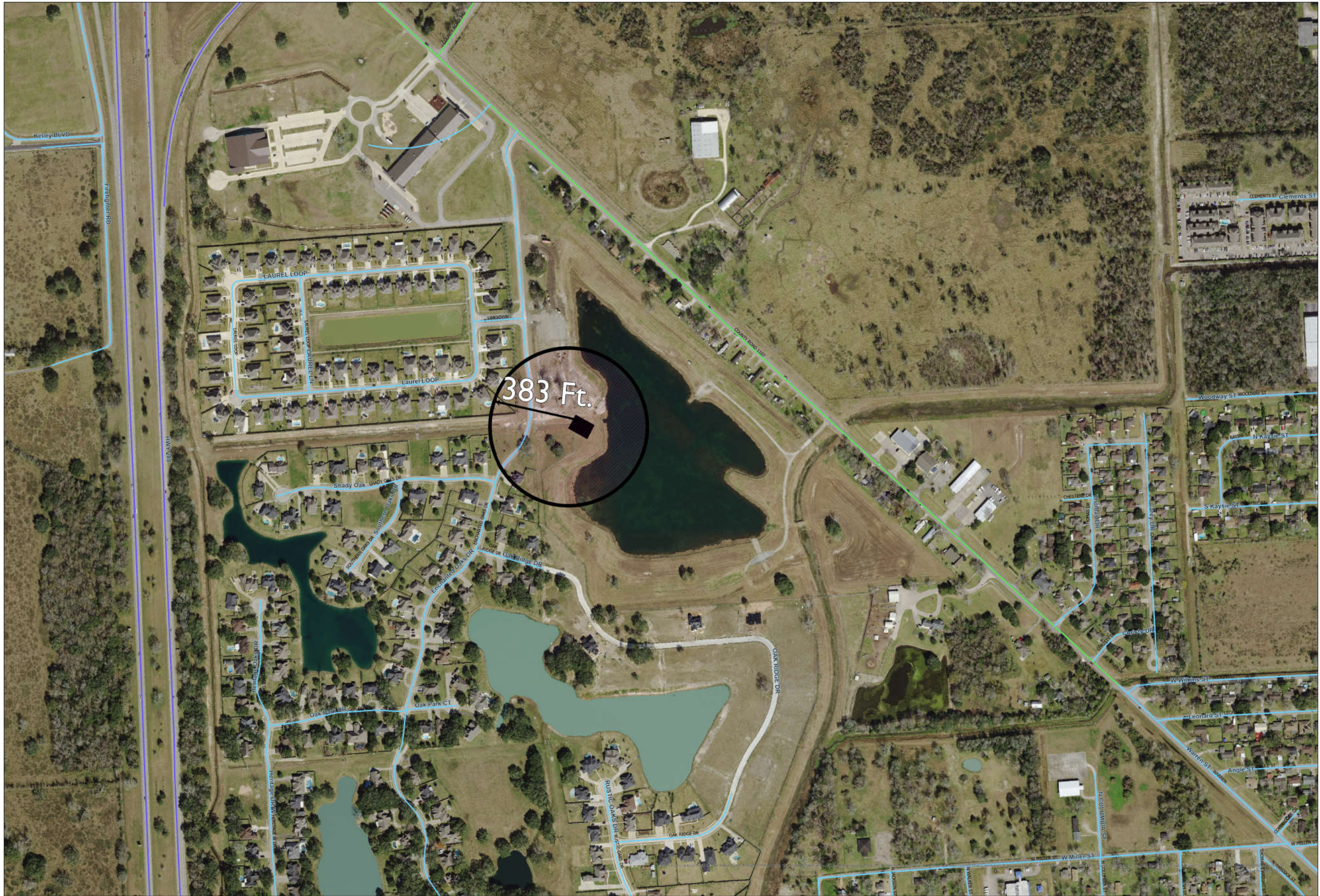
## ADDITIONAL INFORMATION

---

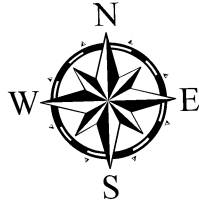
- Green space
- Parking (65 spaces)
- ADA parking (4 spaces)
- Stage
- Stage lighting
- ADA compliant park
- Playground
- Food truck hookups
- Proximity to closest residential development = 383 feet\*

\*For noise complaints, decibels shall be measured from the residential property line and must remain constant for a specified period before enforcement is pursued.





# LAKESIDE PARK



0 270 540 1,080 Feet



# DICKEY PARK

813 West Mulberry, Angleton, TX 77515

## AVAILABLE AMENITIES

---

- ✓ Restrooms
- ✓ Lighting
- ✓ Meets the stage requirements (20' to 24' wide x 16' deep x 18-24' height)

## UNAVAILABLE AMENITIES

---

- ✗ Adequate electrical – need a mobile electrical board for high-arc instruments
- ✗ Green Room
- ✗ Open Space for seating
- ✗ Parking is limited for concertgoers and vendors

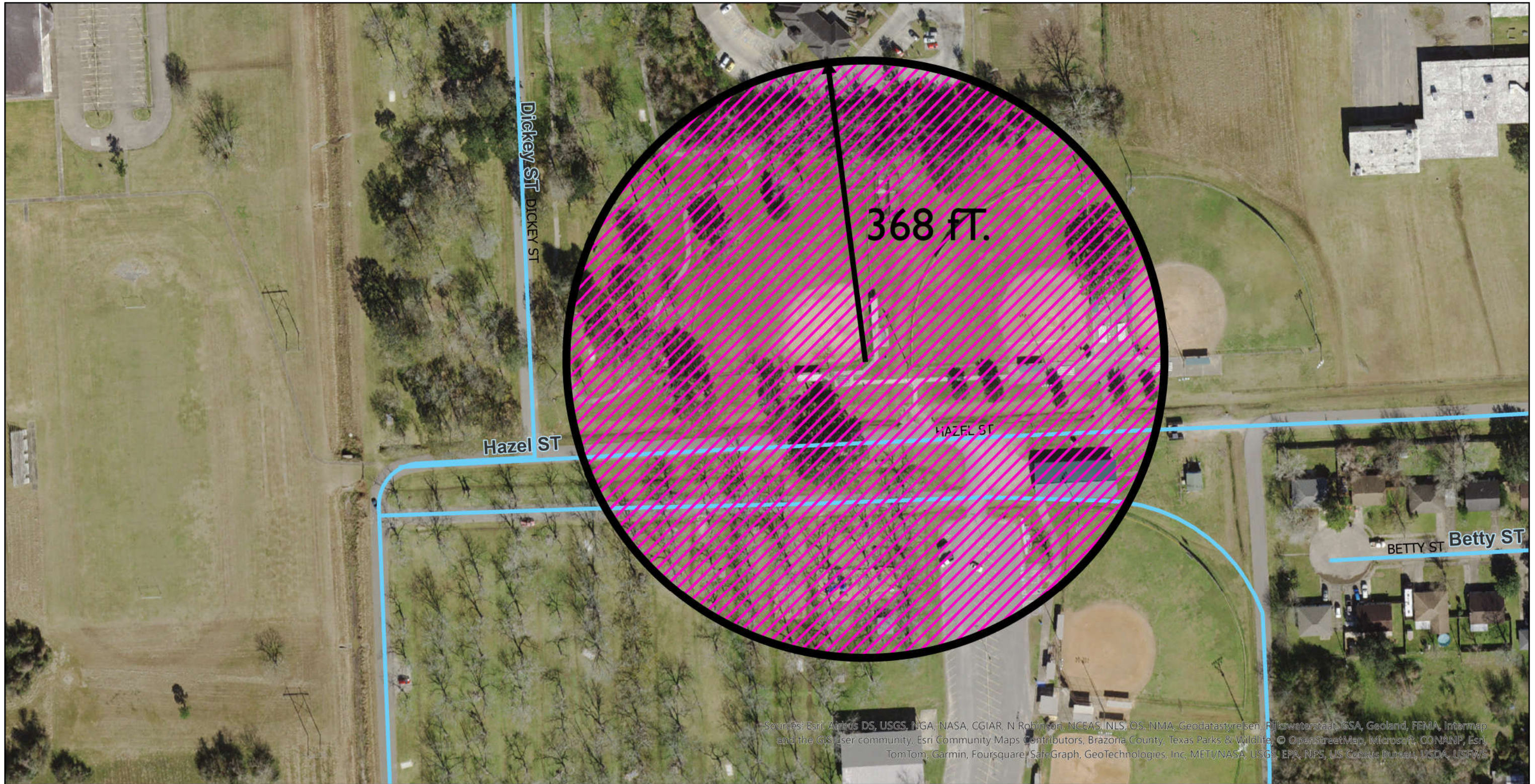
## ADDITIONAL INFORMATION

---

- Parking (23 spaces)
- ADA parking (2 spaces)
- Stage would need to be rented
- Additional stage lighting may be required
- Additional power may need to be for sound and staging
- Heavily wooded park
- Proximity to closest residential development = 368 feet\*

\*For noise complaints, decibels shall be measured from the residential property line and must remain constant for a specified period before enforcement is pursued.

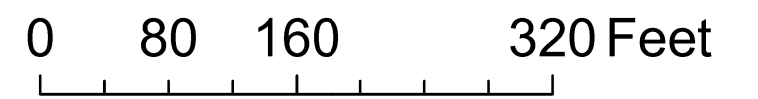




Sources: Esri, Airbus DS, USGS, NGA, NASA, CGIAR, N Robinson, NCEAS, NLS, OS, NMA, Geodastystreben, Rijkswaterstaat, GSA, Geoland, FEMA, Intermap and the GIS user community, Esri Community Maps Contributors, Brazoria County, Texas Parks & Wildlife, © OpenStreetMap, Microsoft, CONANP, Esri, TomTom, Garmin, Foursquare, SafeGraph, GeoTechnologies, Inc, MET/NASA, USGS, EPA, NPS, US Census Bureau, USDA, USFWS



# DICKEY PARK





# BATES PARK

700 Bates Park Road, Angleton, TX 77515

## AVAILABLE AMENITIES

---

- ✓ Meets stage requirements (20' to 24' wide x 16' deep x 18-24' height)
- ✓ Green Room (Concession area)
- ✓ Restrooms
- ✓ Open space for seating
- ✓ Lighting

## UNAVAILABLE AMENITIES

---

- ✗ Parking is limited for concertgoers and vendors
- ✗ Adequate electrical - need a mobile electrical board for high-arcing instruments

## ADDITIONAL INFORMATION

---

- Green space
- Parking (115 spaces)
- ADA parking (5 spaces)
- Stage (covered pavilion)
- Stage lighting (covered pavilion)
- Heavily wooded park
- Green space and picnic areas are not ADA accessible
- Playground
- Conflicts with existing AGSA programs
- Proximity to closest residential development = 600 feet\*

\*For noise complaints, decibels shall be measured from the residential property line and must remain constant for a specified period before enforcement is pursued.







# BG PECK SOCCER COMPLEX

709 Kelly Boulevard, Angleton, TX 77515

## AVAILABLE AMENITIES

---

- ✓ Meets stage requirements (20' to 24' wide x 16' deep)
- ✓ Green Room (Concession area)
- ✓ Restrooms
- ✓ Open space for seating
- ✓ Lighting
- ✓ Parking
- ✓ Vendor Parking

## UNAVAILABLE AMENITIES

---

- ✗ Adequate electrical – need a mobile electrical board for high-arcing instruments
- ✗ Stage requirements are x 18-24' height; BG Peck Soccer Complex Pavilion does not meet these requirements

## ADDITIONAL INFORMATION

---

- Green space
- Parking (347 spaces)
- ADA parking (11 spaces)
- Stage (covered pavilion)
- Stage lighting (covered pavilion)
- Heavily wooded park
- Green space and picnic areas are not ADA accessible
- Playground
- Conflicts with existing AGSA programs
- Proximity to closest residential development = 2800 feet\*

\*For noise complaints, decibels shall be measured from the residential property line and must remain constant for a specified period before enforcement is pursued.







# VETERANS PARK

115 E Magnolia, Angleton, TX 77515

## AVAILABLE AMENITIES

---

- ✓ Meets stage requirements (20' to 24' wide x 16' deep x 18-24' height)
- ✓ Green Room (Concession area)
- ✓ Restrooms
- ✓ Parking
- ✓ Vendor parking
- ✓ Open space for seating
- ✓ Adequate electricity
- ✓ Lighting

## UNAVAILABLE AMENITIES

---

- ✗ NA – All Concert in the Park requirements met

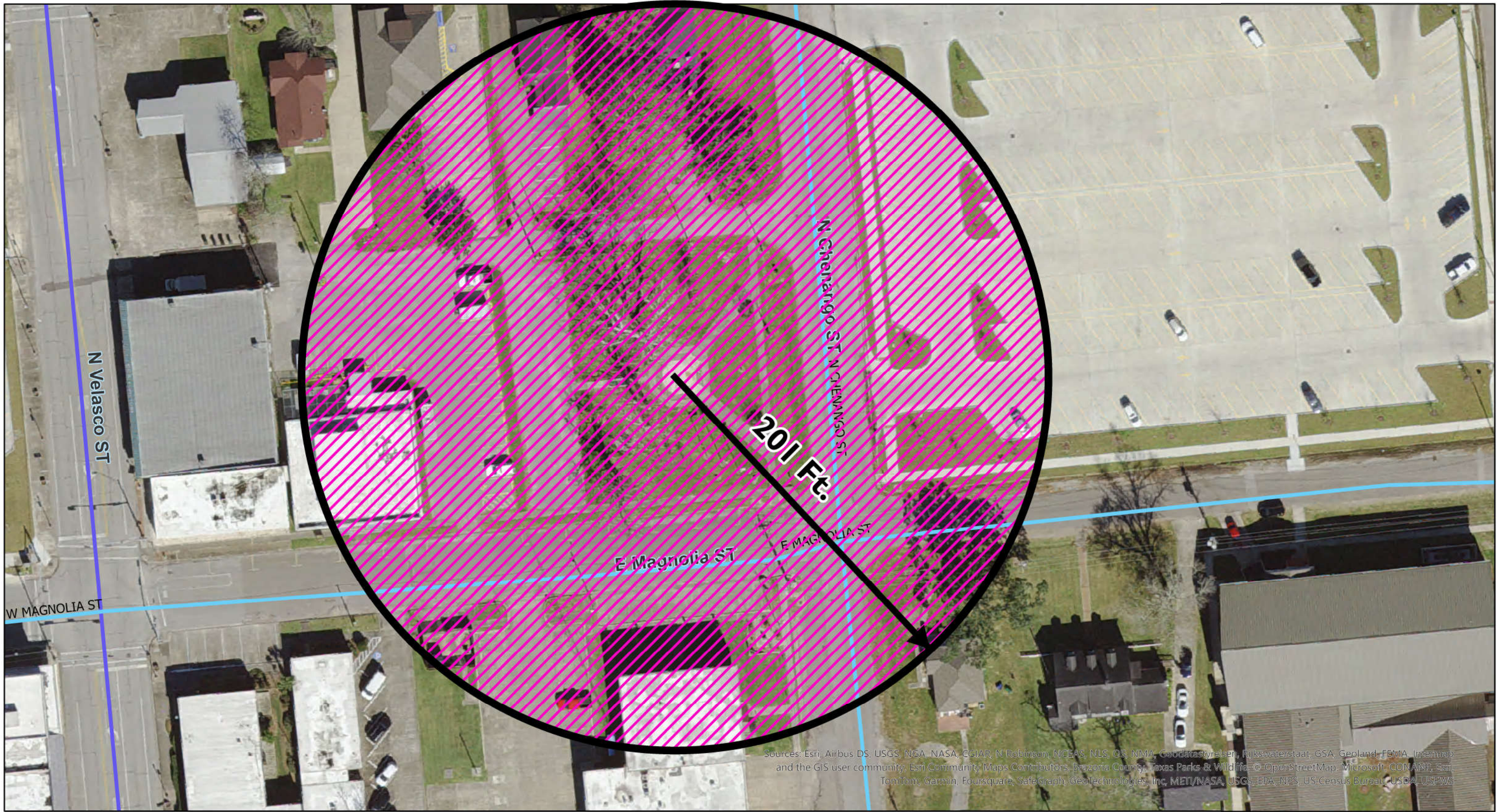
## ADDITIONAL INFORMATION

---

- Small green space
- Parking (203 county spaces)
- No ADA parking
- Proximity to closest residential development = 201 feet\*

\*For noise complaints, decibels shall be measured from the residential property line and must remain constant for a specified period before enforcement is pursued.

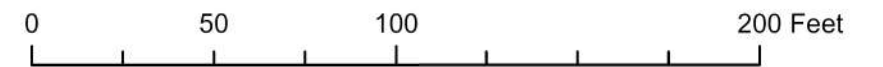




Sources: Esri, Airbus DS, USGS, NGA, NASA, CGIAR, N Robinson, NCEAS, NLS, OS, NMA, Goadata, styreben, Rijkswaterstaat, GSA, Geoland, FEMA, Intermap, and the GIS user community, Esri Community Maps Contributors, Brazoria County, Texas Parks & Wildlife, © OpenStreetMap, Microsoft, CONANP, Esri, TomTom, Garmin, Foursquare, SafeGraph, Geotechnologies, Inc, METI/NASA, USGS, EPA, NPS, US Census Bureau, USDA, USFWS



# VETERANS PARK





# MASTERSON PARK

101 South Arcola Street, Angleton, TX 77515

## AVAILABLE AMENITIES

---

- ✓ Meets stage requirements (20' to 24' wide x 16' deep x 18-24' height)
- ✓ Restrooms
- ✓ Open space for seating
- ✓ Lighting

## UNAVAILABLE AMENITIES

---

- ✗ Green Room
- ✗ Adequate electrical - need a mobile electrical board for high-arcing instruments
- ✗ Parking is limited for concertgoers and vendors

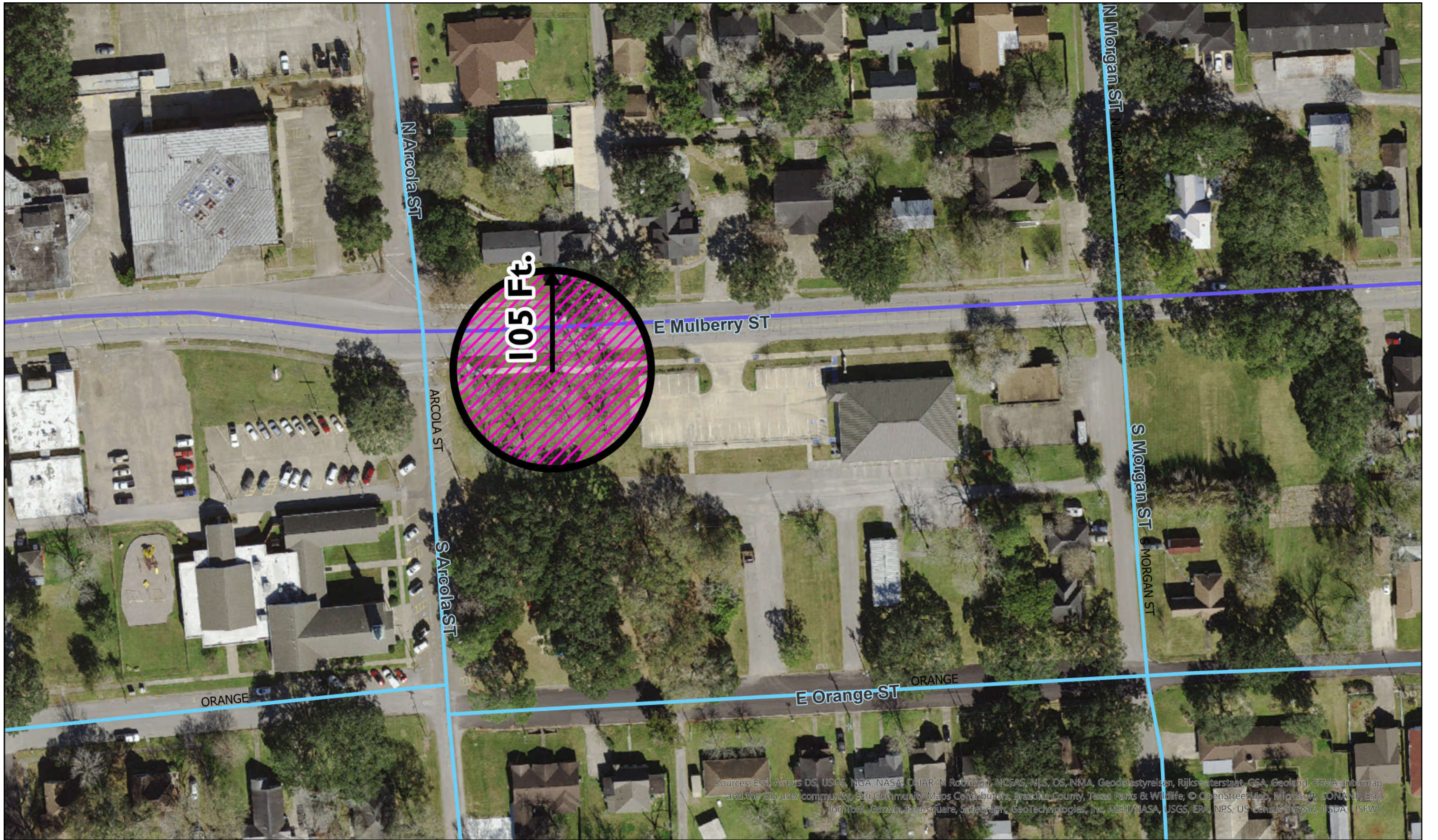
## ADDITIONAL INFORMATION

---

- Green space is limited and wooded
- Park is along a TxDOT roadway
- Parking (20 spaces)
- ADA parking (1 space)
- Playground
- Proximity to closest residential development = 105 feet\*

\*For noise complaints, decibels shall be measured from the residential property line and must remain constant for a specified period before enforcement is pursued.





105 Ft.

Sources: Esri, Airbus DS, USGS, NGA, NASA, CGIAR, N Robinson, NCEAS, NLS, OS, NMA, Geodatastyrelsen, Rijkswaterstaat, GSA, Geoland, FEMA, Intermap and the GIS user community, Esri Community Maps Contributors, Brazoria County, Texas Parks & Wildlife, © OpenStreetMap, Microsoft, CONANP, Esri, TomTom, Garmin, Foursquare, SafeGraph, GeoTechnologies, Inc, METI/NASA, USGS, EPA, NPS, US Census Bureau, USDA, USFWS



# MASTERSON PARK

0 60 120 240 Feet



# OFFICER CASH MEMORIAL DOG PARK

535 South Anderson, Angleton, TX 77515

## AVAILABLE AMENITIES

---

- ✓ Meets stage requirements (20' to 24' wide x 16' deep x 18-24' height)
- ✓ Open space for seating

## UNAVAILABLE AMENITIES

---

- ✗ Green Room (Concession area)
- ✗ Limited lighting
- ✗ Restrooms
- ✗ Parking is limited for concertgoers and vendors
- ✗ Adequate electrical - need a mobile electrical board for high-arcing instruments

## ADDITIONAL INFORMATION

---

- Green space
- The park is open until 11 pm to park users with dogs
- Parking (12 spaces)
- No ADA parking or accessible routes
- Stage
- Directly adjacent to Animal Control Center and residential development
- Proximity to closest residential development = 100 feet\*

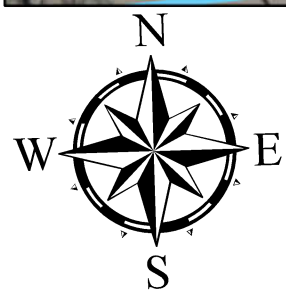
\*For noise complaints, decibels shall be measured from the residential property line and must remain constant for a specified period before enforcement is pursued.





Sources: Esri, Airbus DS, USGS, NGA, NASA, CCIAR, N Robinson, NCEAS, NLS, OS, NMA, Geodatastyrelsen, Rijkswaterstaat, GSA, Geoland, FEMA, Intermap and the GIS user community, Esri Community Maps Contributors, Brazoria County, Texas Parks & Wildlife, © OpenStreetMap, Microsoft, CONANP, Esri, TomTom, Garmin, Foursquare, SafeGraph, GeoTechnologies, Inc, METI/NASA, USGS, EPA, NPS, US Census Bureau, USDA, USFWS

# OFFICER CASH MEMORIAL DOG PARK



0 50 100 200 Feet



# FREEDOM PARK

3105 North Downing, Angleton, TX 77515

## AVAILABLE AMENITIES

---

- ✓ Meets stage requirements (20' to 24' wide x 16' deep x 18-24' height)
- ✓ Green Room (Concession area)
- ✓ Restrooms
- ✓ Parking
- ✓ Vendor parking
- ✓ Open space for seating
- ✓ Lighting

## UNAVAILABLE AMENITIES

---

- ✗ Adequate electrical - need a mobile electrical board for high-arcing instruments

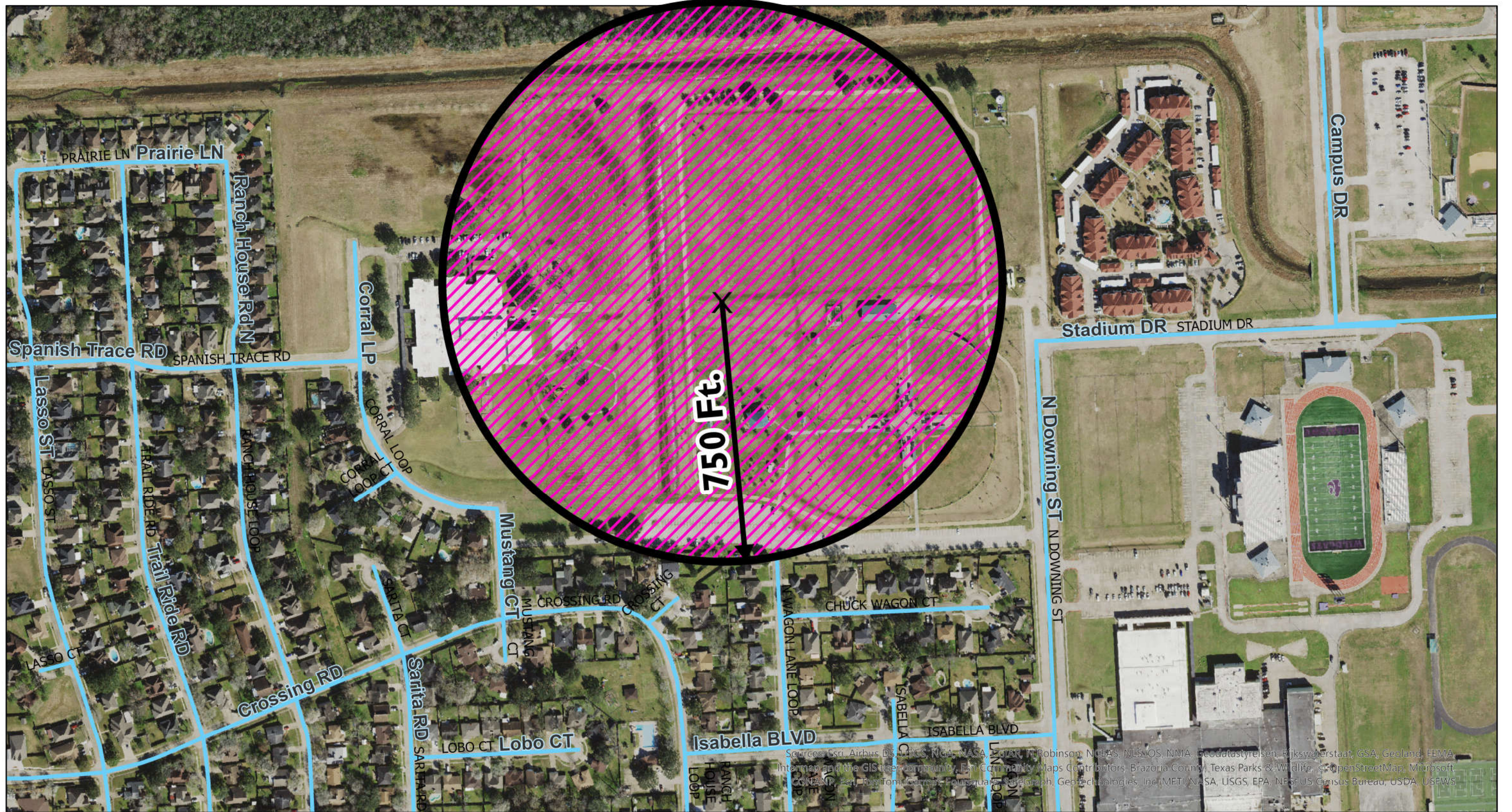
## ADDITIONAL INFORMATION

---

- Large green space
- Parking (300 spaces)
- ADA parking (10 spaces)
- Playground
- Conflicts with existing ALL programs
- Proximity to closest residential development = 750 feet\*

\*For noise complaints, decibels shall be measured from the residential property line and must remain constant for a specified period before enforcement is pursued.

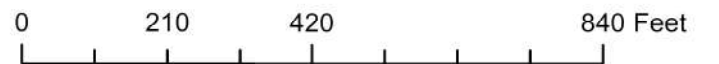




Sources: Esri, Airbus DS, Bing, NGA, NASA, IGNAR, Robinson, NCEAS, NLS, OS, NMA, Geodastysteisen, Rijkswaterstaat, GSA, Geoland, FEMA, Intermap and the GIS user community, Esri Community Maps Contributors, Brazoria County, Texas Parks & Wildlife, © OpenStreetMap, Microsoft, COMNAV, Esri, TomTom, Garmin, FourSquare, SafeGraph, GeoTechnologies, Inc./MET/NASA, USGS, EPA, NPS, US Census Bureau, USDA, USEWS



# FREEDOM PARK





# BRUSHY BAYOU PARK

100 Meadow Creek Road, Angleton, TX 77515

## AVAILABLE AMENITIES

---

- ✓ Meets stage requirements (20' to 24' wide x 16' deep x 18-24' height)
- ✓ Open space for seating

## UNAVAILABLE AMENITIES

---

- ✗ Green Room
- ✗ Restrooms
- ✗ Parking
- ✗ Vendor parking
- ✗ Adequate electrical - need a mobile electrical board for high-arcing instruments
- ✗ Lighting

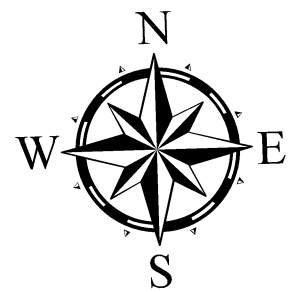
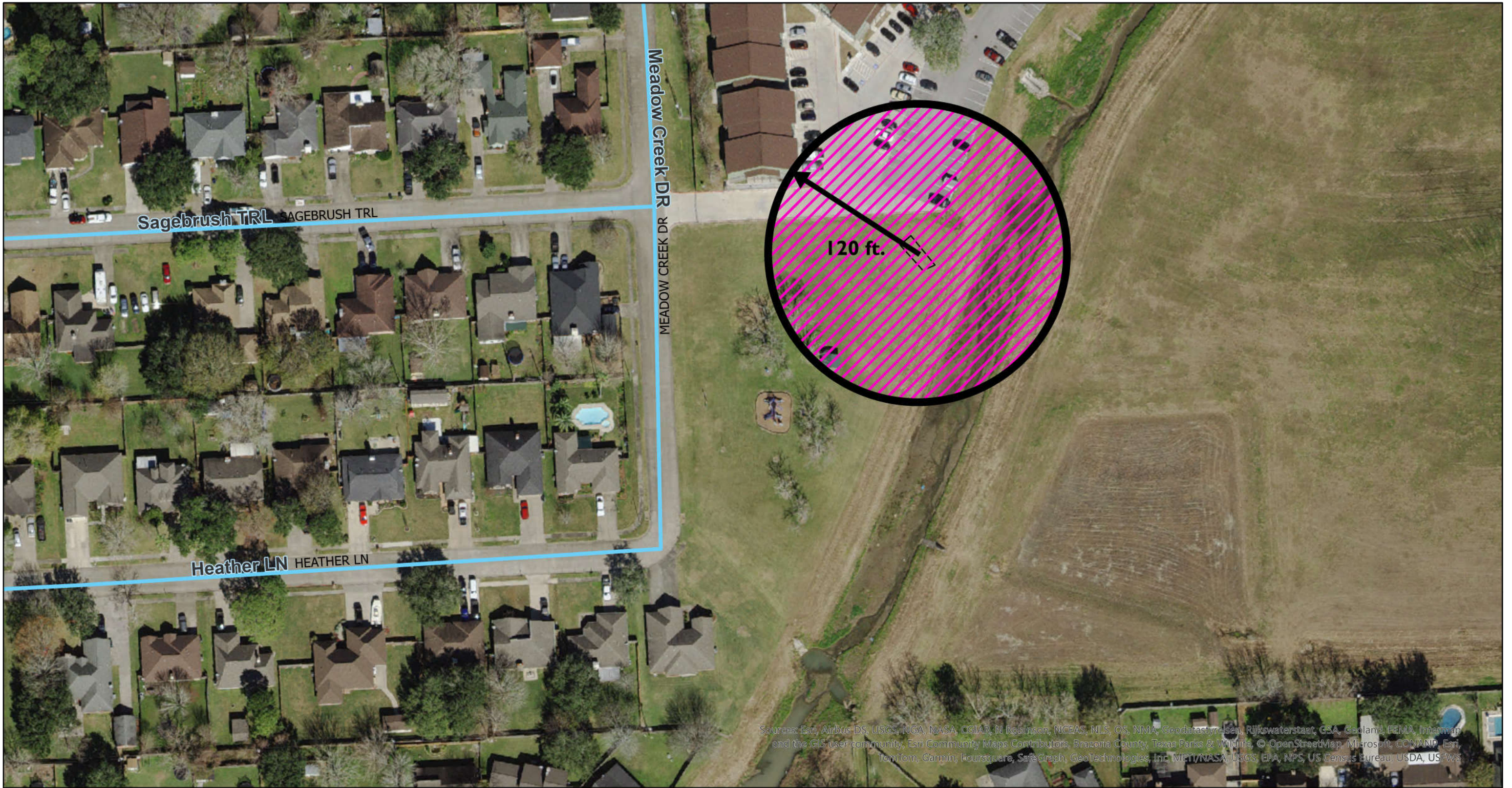
## ADDITIONAL INFORMATION

---

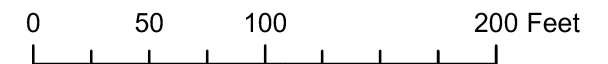
- Parks is located within a residential development
- Small green space
- Parking (0 spaces)
- Not an ADA-accessible park
- Playground
- Proximity to closest residential development = 120 feet\*

\*For noise complaints, decibels shall be measured from the residential property line and must remain constant for a specified period before enforcement is pursued.





# BRUSHY BAYOU PARK





# RUEBEN WELCH PARK

2198 East Kiber Street, Angleton, TX 77515

## AVAILABLE AMENITIES

---

- ✓ Meets stage requirements (20' to 24' wide x 16' deep x 18-24' height)
- ✓ Open space for seating

## UNAVAILABLE AMENITIES

---

- ✗ Green Room
- ✗ Restrooms
- ✗ Parking
- ✗ Vendor parking
- ✗ Adequate electrical - need a mobile electrical board for high-arcing instruments
- ✗ Lighting

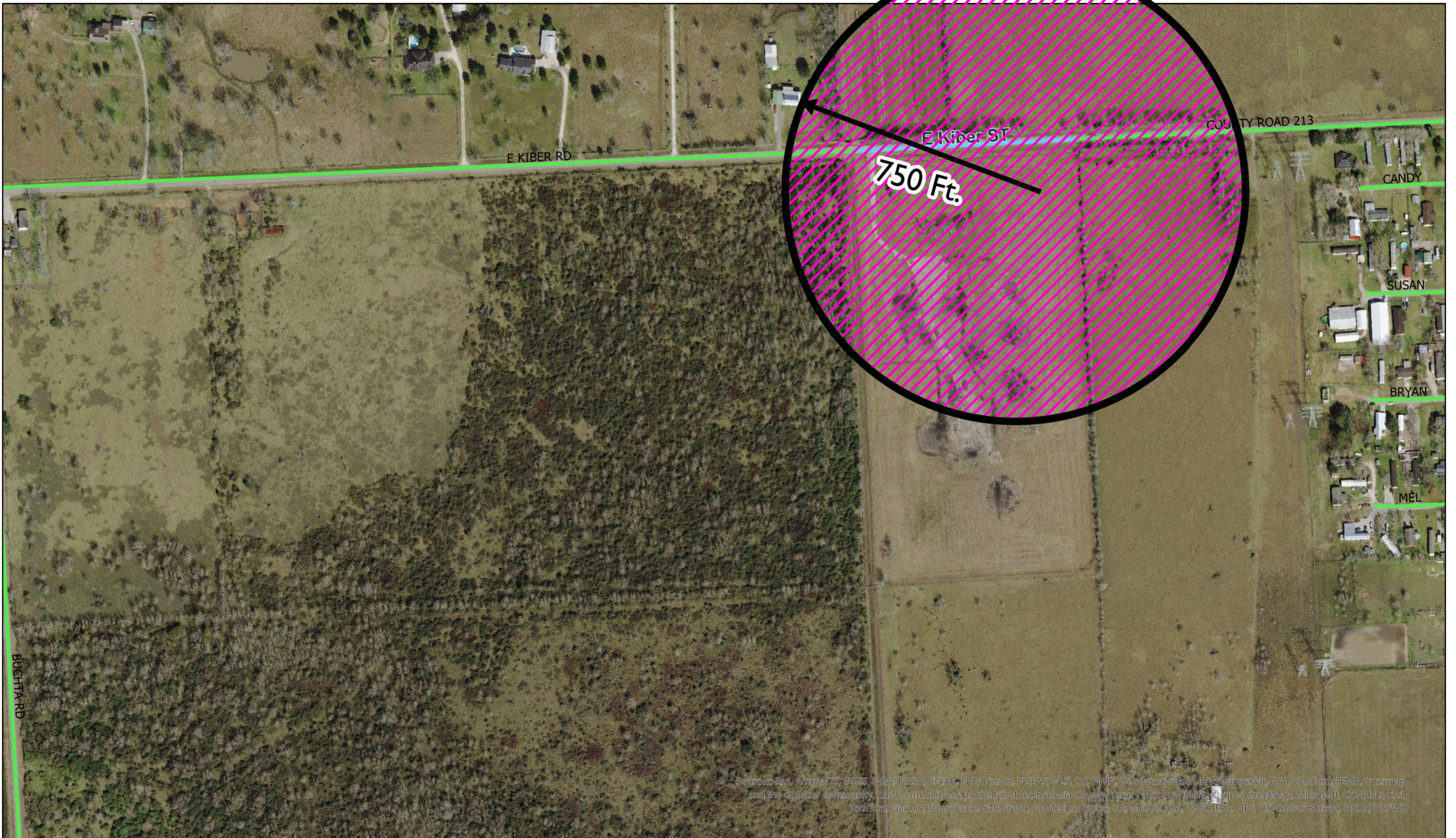
## ADDITIONAL INFORMATION

---

- Undeveloped park
- Large green space
- No parking
- Not an ADA-accessible park
- Proximity to closest residential development = 750 feet\*

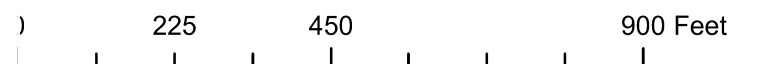
\*For noise complaints, decibels shall be measured from the residential property line and must remain constant for a specified period before enforcement is pursued.





Sources: Esri, Airbus DS, USGS, NGA, NASA, CGIAR, N Robinson, NCEAS, NLS, OS, NMA, Geodatastyrelsen, Rijkswaterstaat, GSA, Geolano, FEMA, Intermop and the GIS user community, Esri Community Maps Contributors, Brazoria County, Texas Parks & Wildlife, © OpenStreetMap, Microsoft, CONANP, Esri, TomTom, Garmin, Foursquare, SafeGraph, GeoTechnologies, Inc, MET/NASA, USGS, EPA, NPS, US Census Bureau, USDA, USFWS

# RUEBEN WELCH PARK





# ABIGAIL ARIAS PARK

301 Cemetery Road, Angleton, TX 77515

## AVAILABLE AMENITIES

---

- ✓ Meets stage requirements (20' to 24' wide x 16' deep x 18-24' height)
- ✓ Open space for seating

## UNAVAILABLE AMENITIES

---

- ✗ Green Room
- ✗ Restrooms
- ✗ Parking
- ✗ Vendor parking
- ✗ Adequate electrical - need a mobile electrical board for high-arcing instruments
- ✗ Lighting

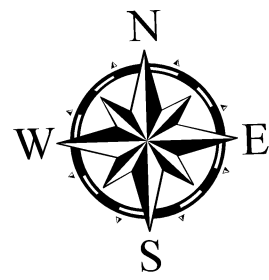
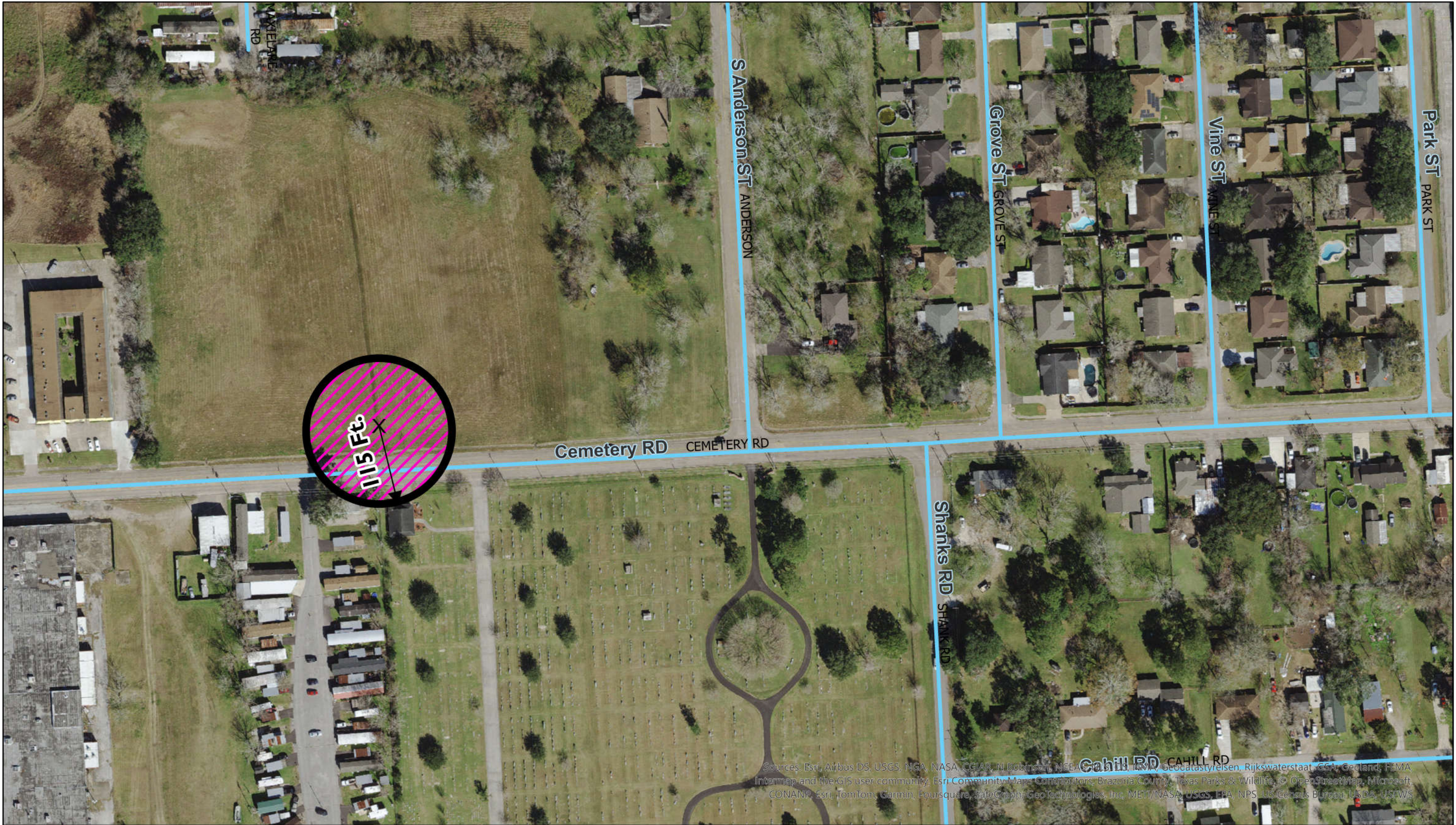
## ADDITIONAL INFORMATION

---

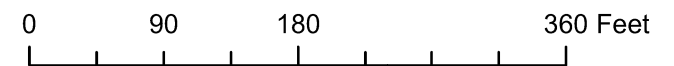
- Undeveloped park
- Large green space
- No parking
- Not an ADA-accessible park
- Proximity to closest residential development = 115 feet\*

\*For noise complaints, decibels shall be measured from the residential property line and must remain constant for a specified period before enforcement is pursued.





# ABIGAIL ARIAS PARK





# MUNICIPAL POOL

121 Dwyer, Angleton, TX 77515

## AVAILABLE AMENITIES

---

- ✓ Meets stage requirements (20' to 24' wide x 16' deep x 18-24' height)
- ✓ Open space for seating

## UNAVAILABLE AMENITIES

---

- ✗ Green Room
- ✗ Restrooms
- ✗ Parking
- ✗ Vendor parking
- ✗ Adequate electrical - need a mobile electrical board for high-arcing instruments
- ✗ Lighting

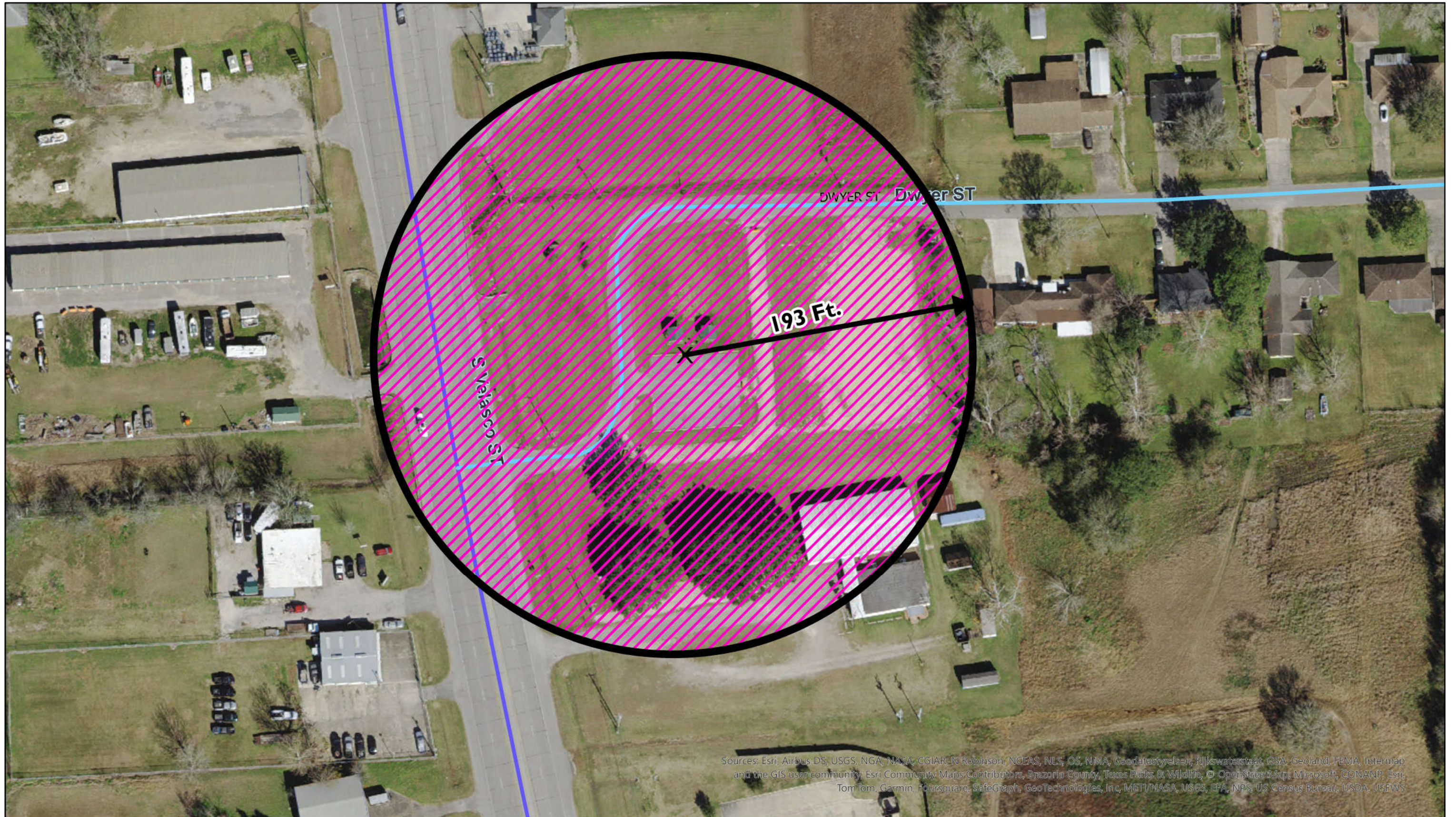
## ADDITIONAL INFORMATION

---

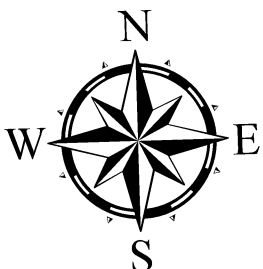
- Undeveloped park
- Small green space
- Parking (14 spaces)
- ADA parking (2 spaces)
- Not an ADA-accessible park
- Proximity to closest residential development = 193 feet\*

\*For noise complaints, decibels shall be measured from the residential property line and must remain constant for a specified period before enforcement is pursued.





Sources: Esri, Airbus DS, USGS, NGA, NASA, CGIAR, N Robinson, NCEAS, NLS, OS, NMA, Geodatastyrelsen, Rijkswaterstaat, GSA, Geoland, FEMA, Intermap and the GIS user community, Esri Community Maps Contributors, Brazoria County, Texas Parks & Wildlife, © OpenStreetMap, Microsoft, CONANP, Esri, TomTom, Garmin, FourSquare, SafeGraph, GeoTechnologies, Inc, METI/NASA, USGS, EPA, NPS, US Census Bureau, USDA, USEFWS



# MUNICIPAL POOL

