

# King Municipal Operations Center

## Construction Progress Report – January 2026





## November 2025 Building Structure

- Erect Steel Structure
- Install Roof Panels
- Tie-In Utilities
- Install/Hang Insulation





# December 2025 Envelope and Interior

- Install Wall Panels and Insulation
- Waterproof Openings
- Frame Interior Walls
- MEP Rough-In
- Begin Overhead Door Installation





# December 2025 Envelope and Interior

- Install Wall Panels and Insulation
- Waterproof Openings
- Frame Interior Walls
- MEP Rough-In
- Begin Overhead Door Installation



# January 2026

## Envelope and Interior

- Continue Exterior Panels/Trim
- Continue MEP Rough-In
- Continue Interior Framing
- Complete Overhead Door Installation
- Pour Sidewalks
- Grade and Stabilize Site



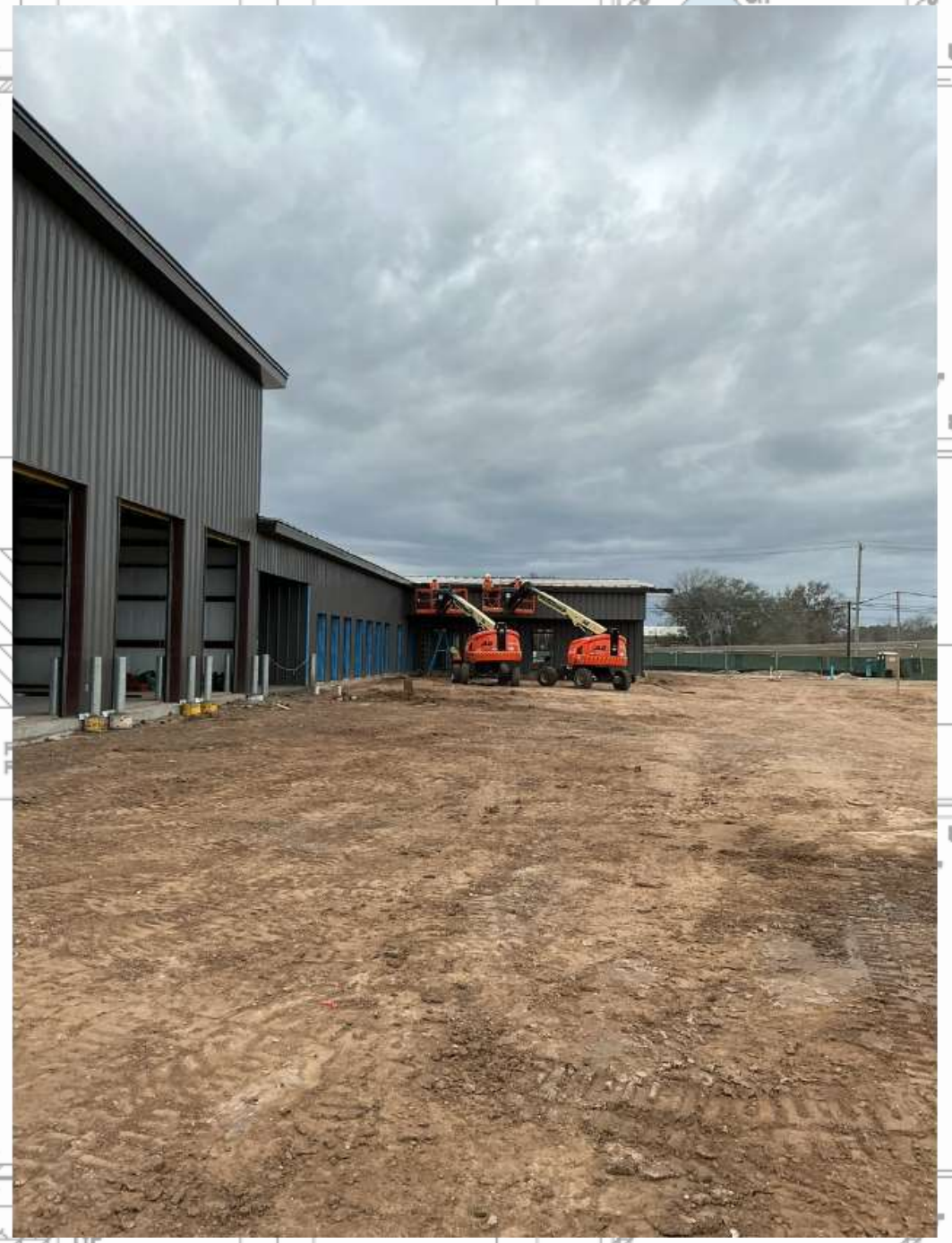




# January 2026 Envelope and Interior

- Continue Exterior Panels/Trim
- Continue MEP Rough-In
- Continue Interior Framing
- Complete Overhead Door Installation
- Pour Sidewalks
- Grade and Stabilize Site





OVERHANG

1'-6"  
TYP