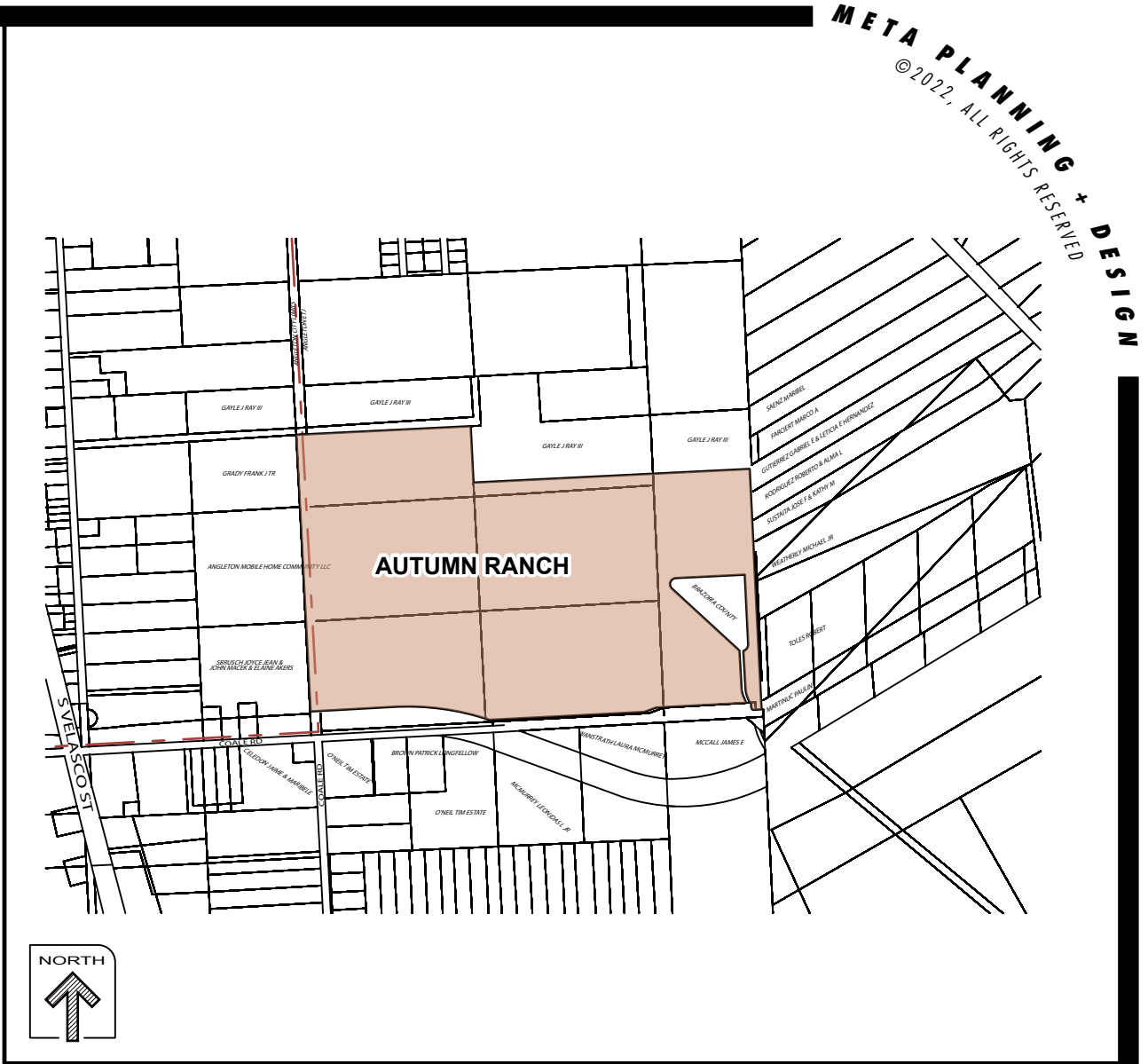
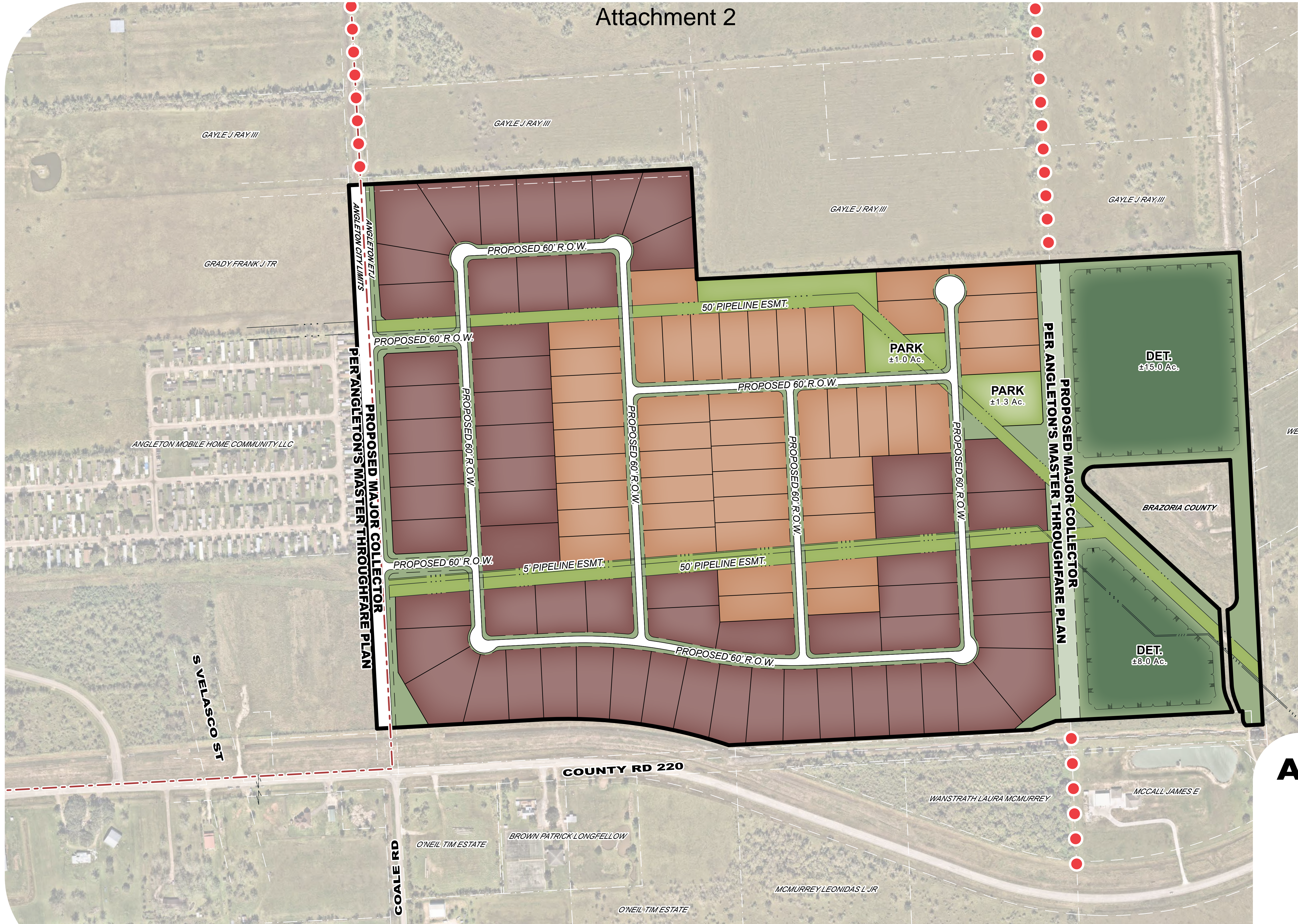


Attachment 2

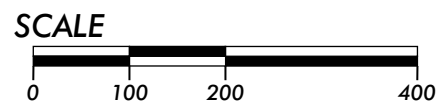


A CONCEPTUAL PLAN FOR  
**AUTUMN RANCH**

**BEING ±170.9 ACRES OF LAND**  
EDWIN WALLER LEAGUE SURVEY, ABSTRACT 126  
CHARLES B. HUSON, ABSTRACT 201  
HARRIS COUNTY, TEXAS  
**K HOVNANIAN OF HOUSTON II, LLC**  
**(OR AFFILIATED ENTITY)**  
13111 NORTHWEST FREEWAY, SUITE 200  
HOUSTON, TEXAS 77040  
PH. # 713-460-0264

**VOGLER & SPENCER ENGINEERING, INC.**  
777 NORTH ELDRIDGE PARKWAY, SUITE 500  
HOUSTON, TEXAS 77079  
PH. # 713-782-0042

**META**  
PLANNING + DESIGN  
24275 Katy Freeway, Ste. 200  
Katy, Texas 77494  
Tel: 281-810-1422



MTA-75004  
JULY 27, 2022

**LOT SUMMARY**

1 Ac.	62 LOTS	56 %
3/4 Ac.	48 LOTS	44 %

**TOTAL 110 LOTS**

THIS GENERAL PLAN HAS BEEN PREPARED IN ACCORDANCE WITH THE PROVISIONS OF THE CITY OF ANGLETON. IN EFFECT AT THE TIME THIS PLAN WAS PREPARED ALONG WITH ANY VARIANCE OR VARIANCES TO THE PROVISIONS OF THE FOREMENTIONED ORDINANCE WHICH ARE SUBSEQUENTLY GRANTED BY THE CITY OF ANGLETON PLANNING & COMMISSION. THIS GENERAL PLAN WAS PREPARED FOR THE LIMITED PURPOSE OF GUIDANCE IN THE PREPARATION OF ACTUAL ENGINEERING AND DEVELOPMENT PLANS. THIS LIMITED WARRANTY IS MADE IN LIEU OF ALL OTHER WARRANTIES, EXPRESS OR IMPLIED, AND NEITHER META PLANNING + DESIGN LLC NOR ANY OF ITS OFFICERS, OR DIRECTORS, OR IMPLIED CONCERNING THE DESIGN, LOCATION QUALITY, CHARACTER OF ACTUAL UTILITIES OR OTHER FACILITIES IN, ON, OVER, OR UNDER THE PREMISES INDICATED IN THE GENERAL PLAN.