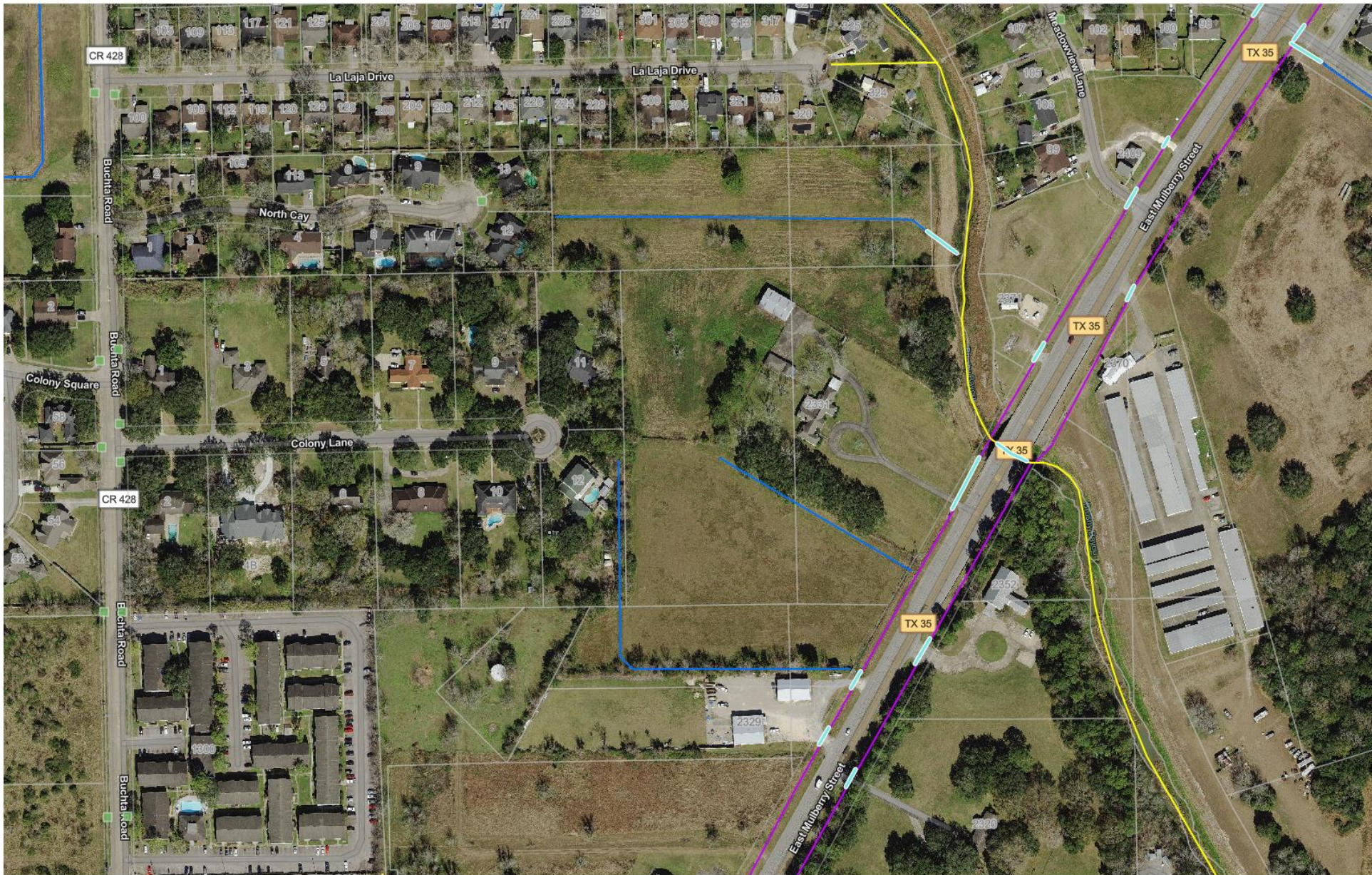


Cay Court/Colony Drive: This drainage system collects water at the back of the cul de sac's and conveys the water through open ditches all the way East to TXDOT drainage on Highway 35. The areas depicted below needed maintenance that was achieved during the months of August/September. This project took 8 working days to complete. However, due to weather conditions this was stretched out over a 3-week period. There is also no maintenance berm or road in these drainage areas. The area must be completely dry to mobilize our equipment. The length of this entire system is approximately 2,265 ft. Based on this the crew can cut approximately 250 to 300 feet per day.



Bates Bark Area: The open drainage ditch areas around Bates Park also had maintenance performed on them. The end of Betty collects water and then meters out into this drainage system that exits through the west of the park into ADD drainage ditch. Regarding the ditches in this area, that will positively affect Betty Street. This was an approximate 500 feet, that took 2 full days to complete. However, this was over a weeklong period due to weather and equipment issues. This is approximately 250 feet per day.

< > 1 of 2

-2147483648.000000

Table Get directions Zoom to

OBJECTID	10269
WIDTH	-2147483648.000000
CateTitle	ditch
Source	Ecopia
Label	Within City Limits
Comments	
Designation	
Shape_Length	209.1477955249411

