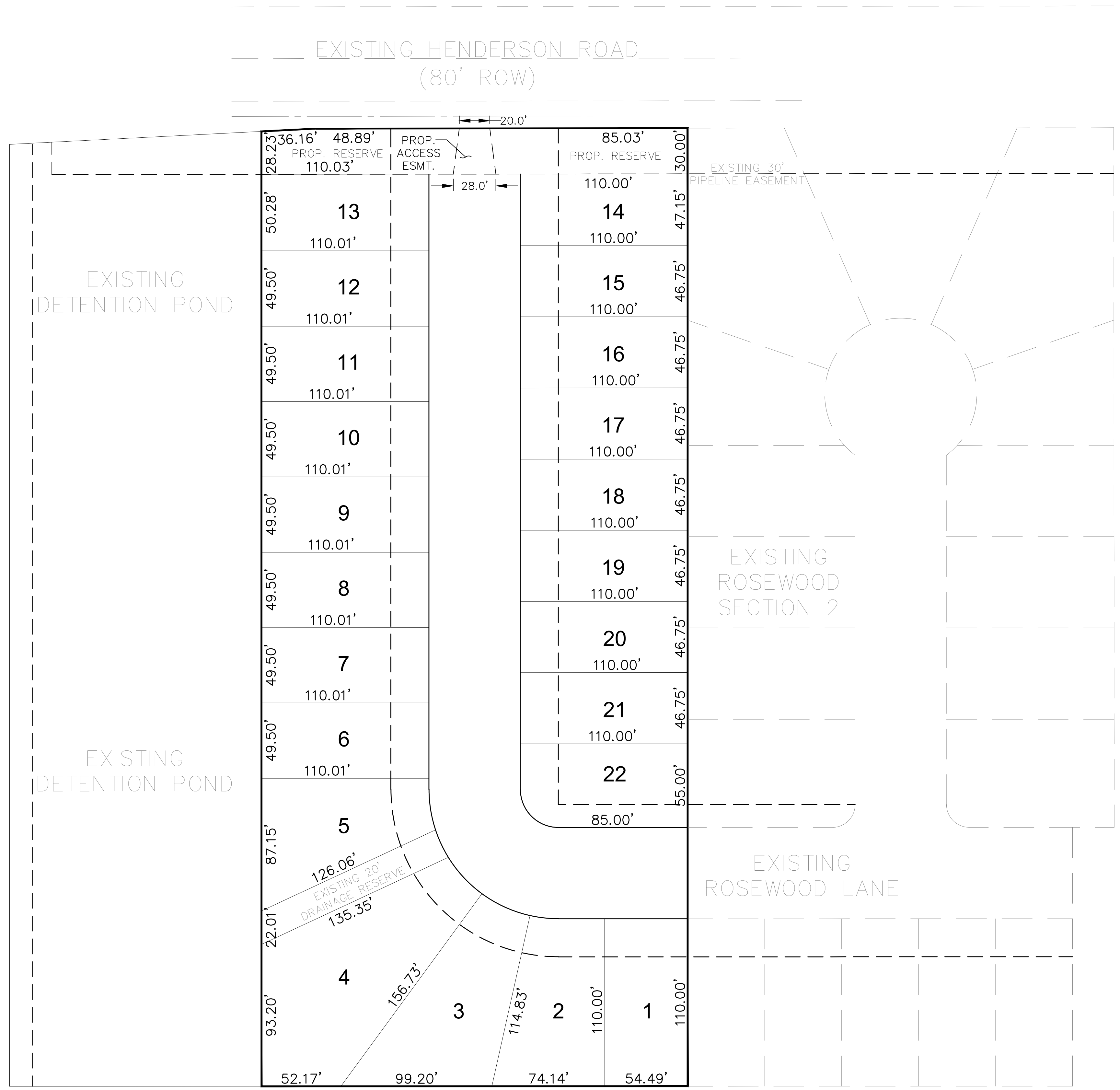


EXHIBIT A



(22 LOTS @ 45'X110' MIN.)

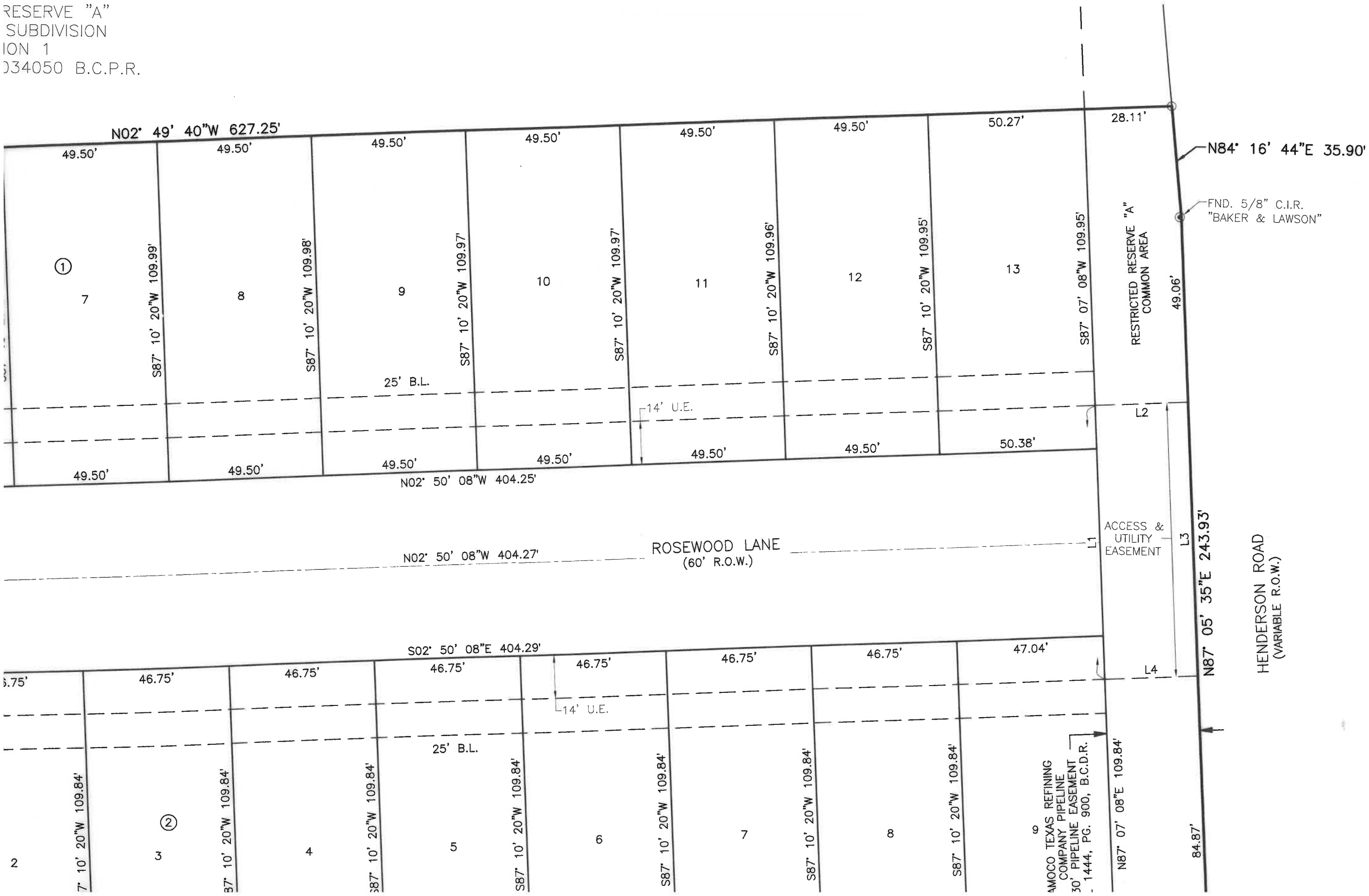
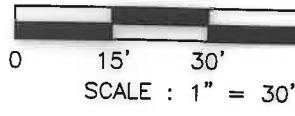
Recorded Plat

2018064769 PLAT

Total Pages: 1

AP

RESERVE "A"
SUBDIVISION
ION 1
034050 B.C.P.R.



LEGEND

- A.E. = AERIAL EASEMENT
- B.C.C.F. = BRAZORIA COUNTY COMMON FUND
- B.C.D.R. = BRAZORIA COUNTY DRAINAGE DISTRICT
- B.C.P.R. = BRAZORIA COUNTY PLAT RECORD
- B.L. = BUILDING LINE
- BM = BENCHMARK
- C.I.R. = CAPPED IRON ROD
- D.E. = DRAINAGE EASEMENT
- E.E. = ELECTRIC EASEMENT
- FND = FOUND
- I.R. = IRON ROD
- I.P. = IRON PIPE
- MH = MANHOLE
- No. = NUMBER
- P.O.B. = POINT OF BEGINNING
- R.O.W. = RIGHT-OF-WAY
- S.F. = SQUARE FEET
- S.S.E. = SANITARY SEWER EASEMENT
- STM.S.E. = STORM SEWER EASEMENT
- U.E. = UTILITY EASEMENT
- VOL., Pg. = VOLUME, PAGE
- W.L.E. = WATER LINE EASEMENT
- ⊙ = FOUND IMPLEMENT
- = SET 5/8" C.I.R.

BEING
(NO.)
OF A
"B" OF
(B.C.I.)
TEXAS

BEGIN
SUBD
SUBD
6.409

THEM
SOUTH
& LA
OF TH

THEM
TO A
(WIDTH
NORTH

THEM
16 MI