

# Lift Station Rehabilitation



# Lift Stations

- Lift stations are a vital part of the collection system. They are used to help pump the sanitary sewer across the system. Gravity lines from the basin area bring the sewer to the station. Then the lift station pumps the sewer to the next series of lines, lift station, or WWTP. Each lift station services an area of the city. They are an important part of infrastructure. Especially because if one of them fails there could be a widespread area without service. Therefore, it is important to invest funding in lift stations that are becoming dilapidated. This presentation will highlight the rehabilitations that ARPA fund has afforded.



# Lift Station #10

---



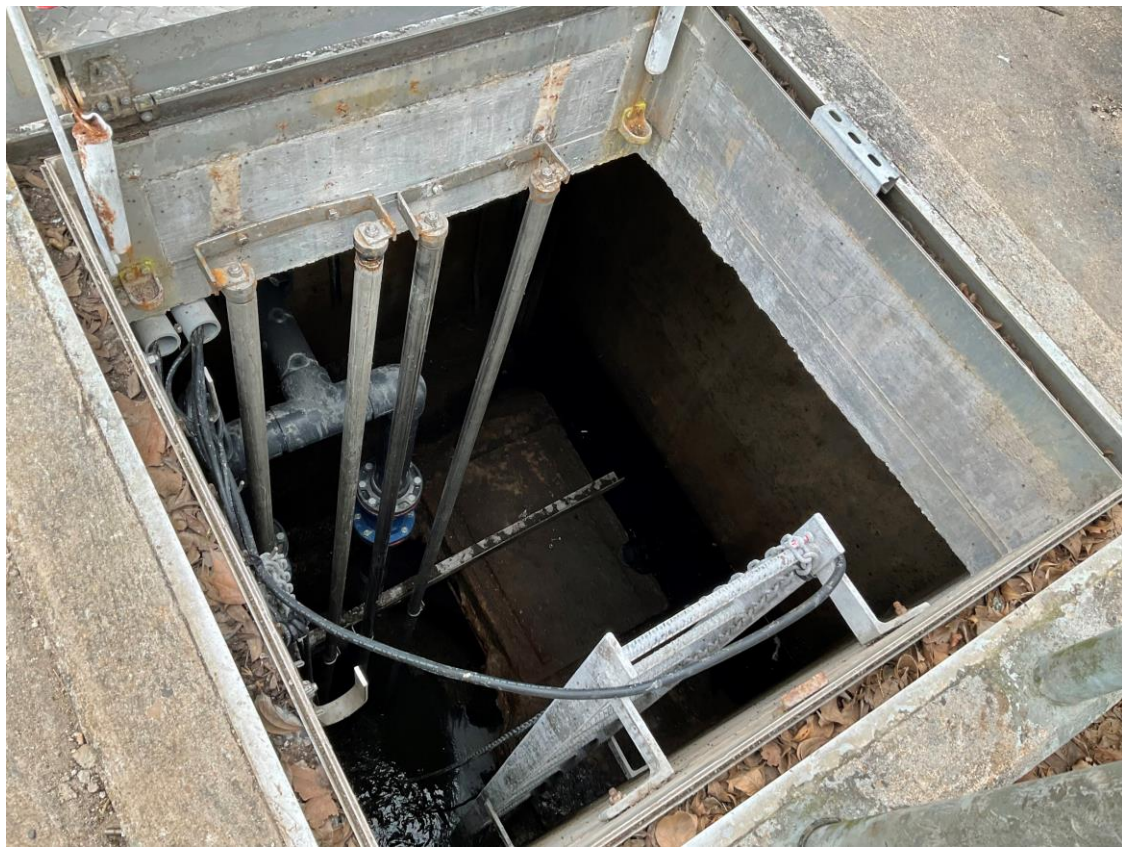
# Lift Station #10

- Dry pit eliminated
  - New high efficiency submersible pumps installed
  - All new plumbing and rail system
  - New control panel and electrical system
- 
- Costs: \$47,627.00



# Lift Station #11

---



# Lift Station #11

- Dry pit eliminated
  - New, high efficiency submersible pumps installed
  - All new plumbing and rail system
  - New control panel and electrical system
  - New fence
- 
- Costs: \$47,731.05



# Lift Station #24

---



# Lift Station #24

- Hut enclosure eliminated
  - New, high efficiency submersible pumps installed
  - All new plumbing and rail system
  - New control panel and electrical system
  - New fence
- 
- Costs: \$53,940.00



# Lift Station #25

---



# Lift Station #25

- Hut enclosure eliminated
  - New, high efficiency submersible pumps installed
  - All new plumbing and rail system
  - New control panel and electrical system
  - New fence
- 
- Costs: \$48,990.00





Lift Station #8

# Lift Station #8

- Dry well eliminated increasing capacity
  - Wet well and manhole coated
  - New, high efficiency submersible pumps installed
  - All new plumbing and rail system
  - New control panel and electrical system
  - New fence
- 
- Costs: \$175,140.00



# Lift Station #26

---



# Lift Station #26

- Hut enclosure eliminated
- New, high efficiency submersible pumps installed
- All new plumbing and rail system
- New control panel and electrical system
- Main power converted to 3 phase – 480V
  
- Costs: \$56,209.00



## Lift Station #35



# Lift Station #35

- New, high efficiency submersible pumps installed
- All new plumbing and rail system
- Costs: \$26,073.00