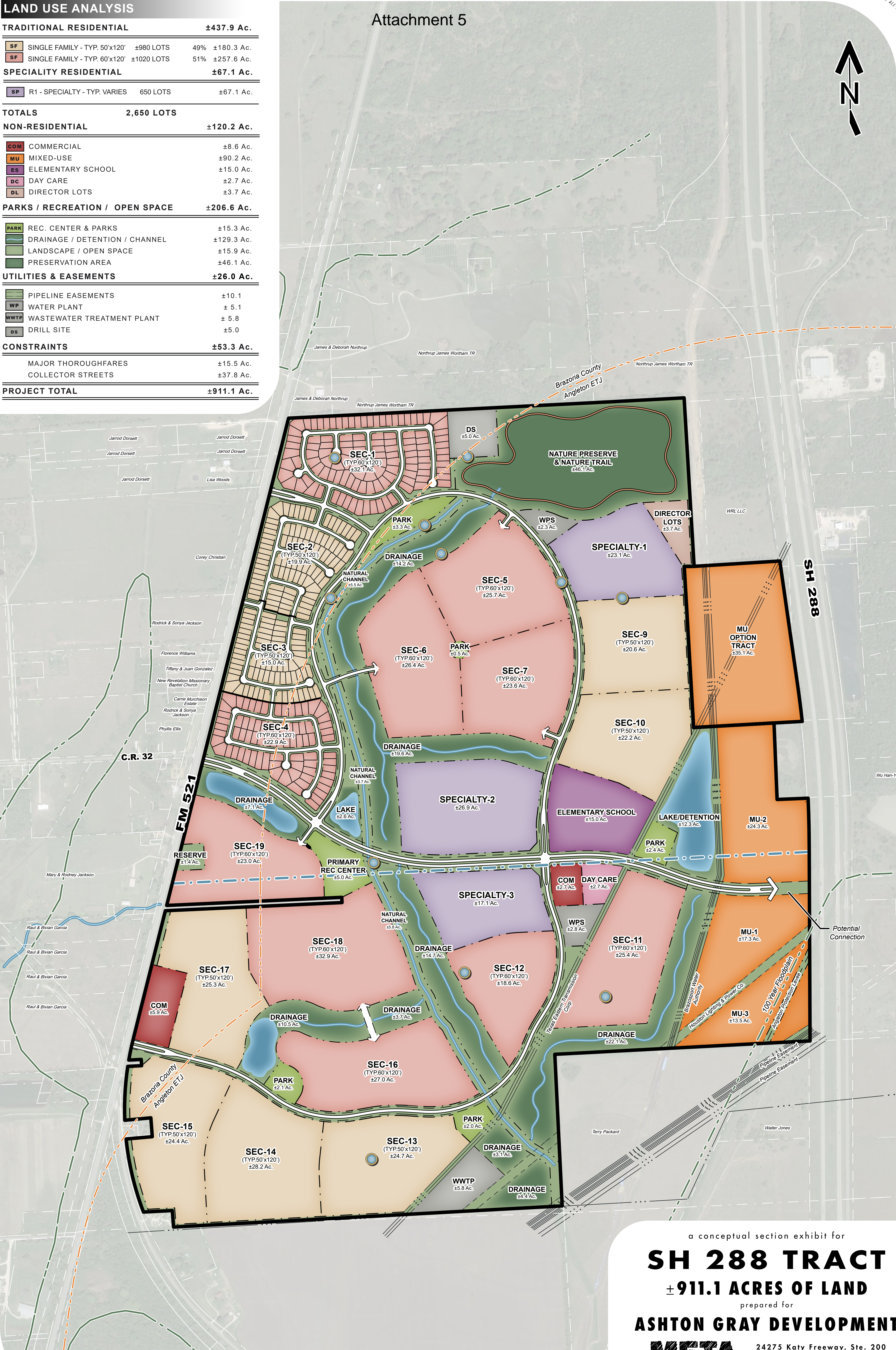


LAND USE ANALYSIS

TRADITIONAL RESIDENTIAL		±437.9 Ac.
SF	SINGLE FAMILY - TYP. 50'x120' ±980 LOTS	49% ±180.3 Ac.
SF	SINGLE FAMILY - TYP. 60'x120' ±1020 LOTS	51% ±257.6 Ac.
SPECIALITY RESIDENTIAL		±67.1 Ac.
SP	R1 - SPECIALTY - TYP. VARIES 650 LOTS	±67.1 Ac.
TOTALS		2,650 LOTS
NON-RESIDENTIAL		±120.2 Ac.
COM	COMMERCIAL	±8.6 Ac.
MU	MIXED-USE	±90.2 Ac.
ES	ELEMENTARY SCHOOL	±15.0 Ac.
DC	DAY CARE	±2.7 Ac.
DL	DIRECTOR LOTS	±3.7 Ac.
PARKS / RECREATION / OPEN SPACE		±206.6 Ac.
PARK	REC. CENTER & PARKS	±15.3 Ac.
	DRAINAGE / DETENTION / CHANNEL	±129.3 Ac.
	LANDSCAPE / OPEN SPACE	±15.9 Ac.
	PRESERVATION AREA	±46.1 Ac.
UTILITIES & EASEMENTS		±26.0 Ac.
	PIPELINE EASEMENTS	±10.1
WP	WATER PLANT	± 5.1
WWTP	WASTEWATER TREATMENT PLANT	± 5.8
DS	DRILL SITE	±5.0
CONSTRAINTS		±53.3 Ac.
MAJOR THOROUGHFARES		±15.5 Ac.
COLLECTOR STREETS		±37.8 Ac.
PROJECT TOTAL		±911.1 Ac.

Attachment 5



a conceptual section exhibit for

SH 288 TRACT

± 911.1 ACRES OF LAND

prepared for

ASHTON GRAY DEVELOPMENT

META
PLANNING + DESIGN

24275 Katy Freeway, Ste. 200
Katy, Texas 77494
Tel: 281-810-1422

MTA-78006
SEPTEMBER 23, 2021

SCALE
0 200 400 800

THIS DRAWING IS A GRAPHIC REPRESENTATION FOR PRESENTATION PURPOSES ONLY AND IS NOT FOR COMPUTATION OR CONSTRUCTION PURPOSES. SAID DRAWING IS A SCANNED IMAGE ONLY AND IS SUBJECT TO CHANGE WITHOUT NOTICE. META PLANNING + DESIGN MAY OR MAY NOT INTEGRATE ADDITIONAL INFORMATION PROVIDED BY OTHER CONSULTANTS, INCLUDING BUT NOT LIMITED TO THE TOPICS OF ENGINEERING AND DRAINAGE, FLOODPLAINS, AND/OR ENVIRONMENTAL ISSUES AS THEY RELATE TO THIS DRAWING. NO WARRANTIES, EXPRESSED OR IMPLIED, CONCERNING THE PHYSICAL DESIGN, LOCATION, AND CHARACTER OF THE FACILITIES SHOWN ON THIS MAP ARE INTENDED. ADDITIONALLY, NO WARRANTY IS MADE TO THE ACCURACY OF THE INFORMATION CONTAINED HEREIN.

○ = WELL SITE