



EDGELAND

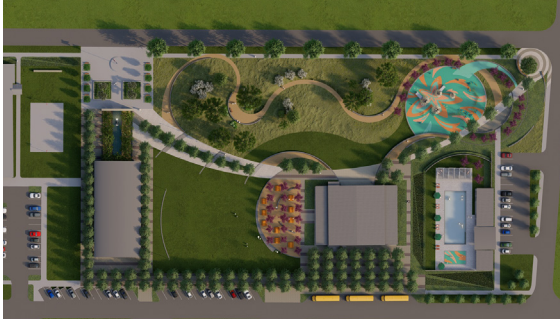
LANDSCAPE ARCHITECTURE SERVICES

CITY OF ANGLETON 4 ■ PRESENTATION OF QUALIFICATIONS ■ JUNE 25, 2024



SIMILAR PROJECT EXPERIENCE

EDGELAND



MARSHALL PARK MASTERPLAN

ANGLETON ISD



BRIDGELAND

HOWARD HUGHES DEVELOPMENT



MASON PARK

HOUSTON PARKS AND RECREATION



EVELYN'S PARK

EVELYN'S PARK CONSERVANCY +
CITY OF BELLAIRE



WOODSEN RESERVE

TOLL BROTHERS



COYOTE PARK

CITY OF SAN ANTONIO + USAA REAL ESTATE

PROJECTS COMPLETED IN THE LAST 5 YEARS

EDGELAND

- + **Evelyn's Park**
Evelyn's Park Conservancy
- + **Mason Park**
Houston Park and Recreation
- + **University of Houston - Law Building**
University of Houston System
- + **Alief Community Center**
City of Houston
- + **Cross Creek Ranch Community Center**
Johnson Development
- + **UTSA Aquatic Facility**
University of Texas System
- + **Santa Fe Memorial**
Sante Fe ISD
- + **STEM Building**
Texas A&M University System
- + **Junior High and Elementary**
Angleton ISD
- + **Marshall Park Masterplan**
Angleton ISD
- + **MKT Mixed Use**
Radom Capital
- + **Outdoor Classroom and Stage**
St. Philips College
- + **College of Nursing Building**
Lamar State College Orange
- + **Alumni Plaza**
University of Houston System
- + **Woodson Reserve**
Toll Brothers
- + **Jefferson Early Learning Center**
Alief ISD
- + **Friendswood High School**
Friendswood ISD



STRONG WORKING RELATIONSHIP WITH ANGLETON ISD

- + **Softball Field Renovation**
Angleton ISD
- + **CTE Center/Angleton HS**
Angleton ISD
- + **Transportation Center**
Angleton ISD
- + **Downing Project**
Angleton ISD
- + **Angleton JHS**
Angleton ISD
- + **Early Childhood Center**
Angleton ISD
- + **2024 Facility Assesment**
Angleton ISD



THANK YOU

EDGELAND