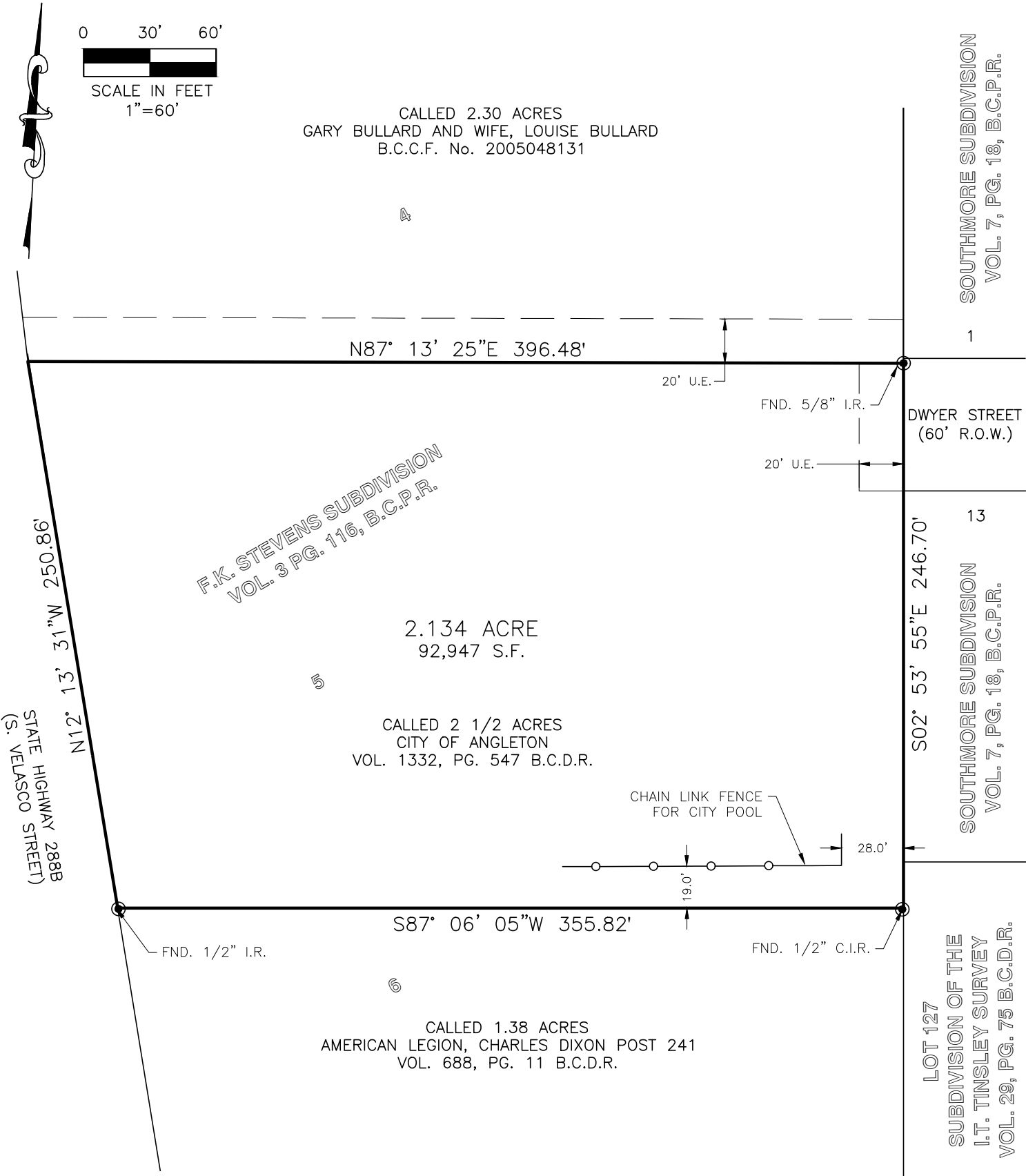


J:\140005\147005\14765\ENGINEERING-SURVEY\DRAWING\14765-EXHIBIT.DWG 6/17/21 Devin Royd



NOTES:

1. ALL BEARINGS SHOWN HEREON ARE BASED ON THE TEXAS COORDINATE SYSTEM OF 1983, SOUTH CENTRAL ZONE PER GPS OBSERVATIONS.
2. A METES AND BOUNDS DESCRIPTION OF THE SUBJECT TRACT HAS BEEN PREPARED BY BAKER & LAWSON INC. AND ACCOMPANIES THIS EXHIBIT.

LEGEND

- A.E. = AERIAL EASEMENT
B.C.C.F. = BRAZORIA COUNTY CLERK'S FILE
B.C.D.R. = BRAZORIA COUNTY DEED RECORDS
B.C.P.R. = BRAZORIA COUNTY PLAT RECORDS
B.L. = BUILDING LINE
FND = FOUND
No. = NUMBER
C.I.R. = CAPPED IRON ROD
I.R. = IRON ROD
I.P. = IRON PIPE
P.O.B. = POINT OF BEGINNING
P.O.C. = POINT OF COMMENCEMENT
R.O.W. = RIGHT-OF-WAY
S.F. = SQUARE FEET
U.E. = UTILITY EASEMENT
VOL., Pg. = VOLUME, PAGE
● = FOUND MONUMENT AS NOTED
○ = SET 5/8" CIR "BAKER&LAWSON"

EXHIBIT

FENCE LINE FOR CITY OF ANGLETON
PORTION OF LOT 5, F.K. STEVENS SUBDIVISION
VOL. 3, Pg. 116, B.C.P.R.
IN THE I.T. TINSLEY SURVEY, ABSTRACT No. 375
IN BRAZORIA COUNTY, TEXAS



BAKER & LAWSON, INC.
ENGINEERS • PLANNERS • SURVEYORS

Baker & Lawson Inc.
300 East Cedar, Angleton, TX 77515
Phone # 979-849-6681
www.bakerlawson.com
Licensed Surveying Firm No. 10052500

DWG. NO.: 14765-Exhibit.dwg	DRAWN BY: CAP	CHK. BY: DRR
JOB NO.: 14765	SCALE: 1"= 60'	DATE: 6-16-2021