



AGENDA ITEM SUMMARY FORM

MEETING DATE: April 23, 2024
PREPARED BY: Chris Whittaker
AGENDA CONTENT: Update to TA Grant on 288B

AGENDA ITEM SECTION: Regular Agenda

BUDGETED AMOUNT: **FUNDS REQUESTED:**
N/A

FUND:

EXECUTIVE SUMMARY:

The City has met with TxDOT representatives last week to discuss the TA Grant award for the Downtown Sidewalk Improvement Project from Cedar to Orange. Currently, the City is in the process of reviewing the provided Advance Funding Agreement (AFA) for the Downtown Sidewalk Project. It is estimated that the City will have all requested information over to TxDOT in two weeks. TxDOT will review and provide comments back to the City (estimated 6 weeks). Once the AFA is agreed upon it will take approximately 4-6 months to execute. Once executed, TxDOT will meet with the City on the 30% design plans submitted and start the design process up again. It is estimated that it will be 6-7 month process to complete the design.

The existing sanitary sewer lines have been televised that cross 288B. The TV crews were able to clean majority of the line segments but were not able to TV some of the lines due to access issues (invert built around pipes openings are too small) and debris build up in the line segments (see exhibit). These lines are typically vitrified clay pipe. There are a significant number of open joints, cracked pipes, several holes, and grease build up in the collection system (see attached exhibit). Due to the existing conditions, Cured in Place Pipe is a viable option.

I have also attached the record drawings of the TxDOT storm sewer project that was performed in the late 1990's/early 2000's (See attachment). As Councilman Booth previously stated, there are conflict boxes along the TxDOT storm Sewer where the sanitary sewer crosses. These lines are cased through the TxDOT storm sewer system. Therefore, Pipe Bursting is not a viable option.

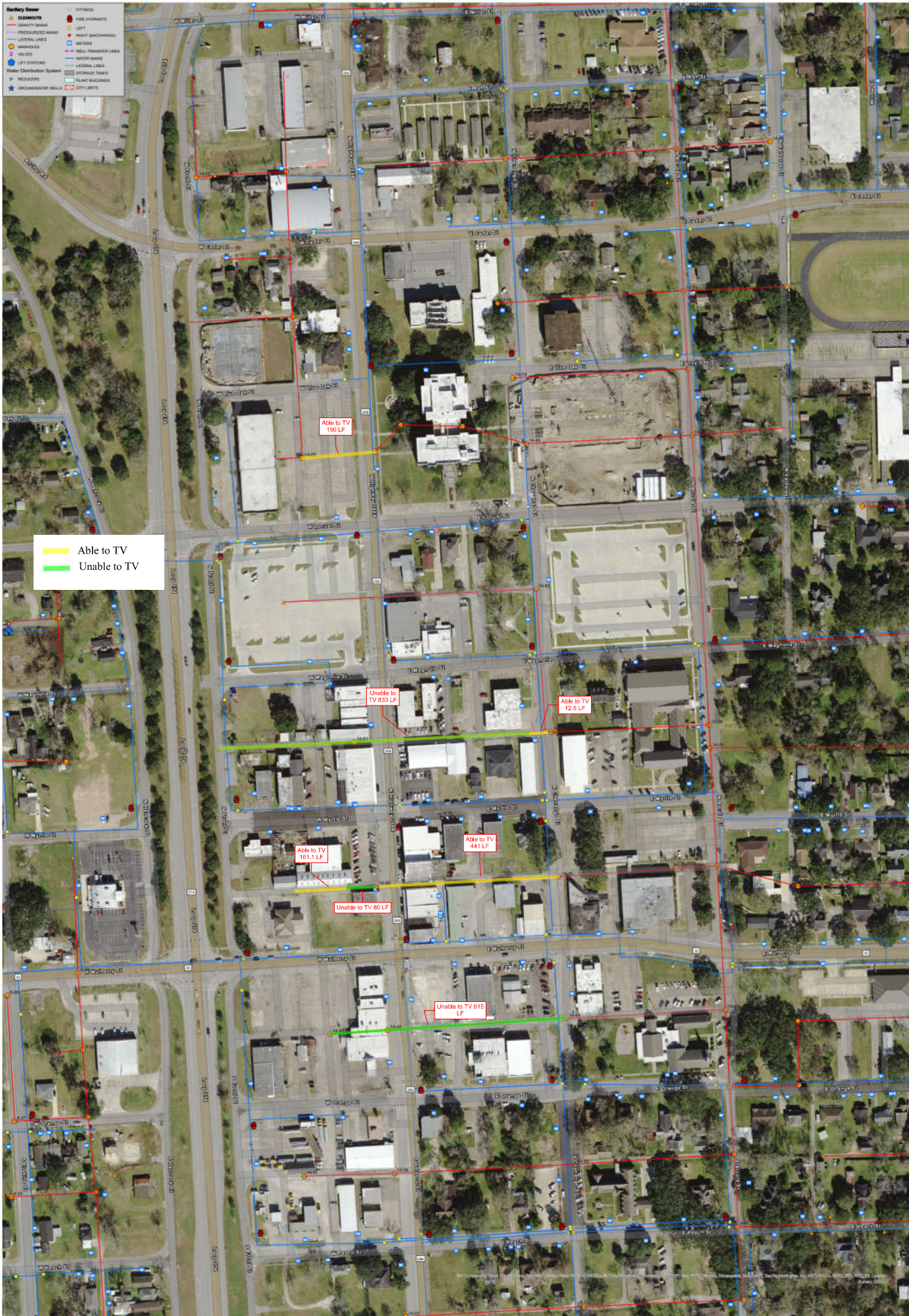
HDR recommend that the City proceed forward with replacing only the sections under 288B by open cut. This will allow the City to protect its investment with the Downtown Sidewalk Improvements and allow for future rehabilitation in the future.

RECOMMENDATION: Request HDR to provide proposal for proposed utility improvements on 288B from Cedar to Orange..

Sanitary Sewer

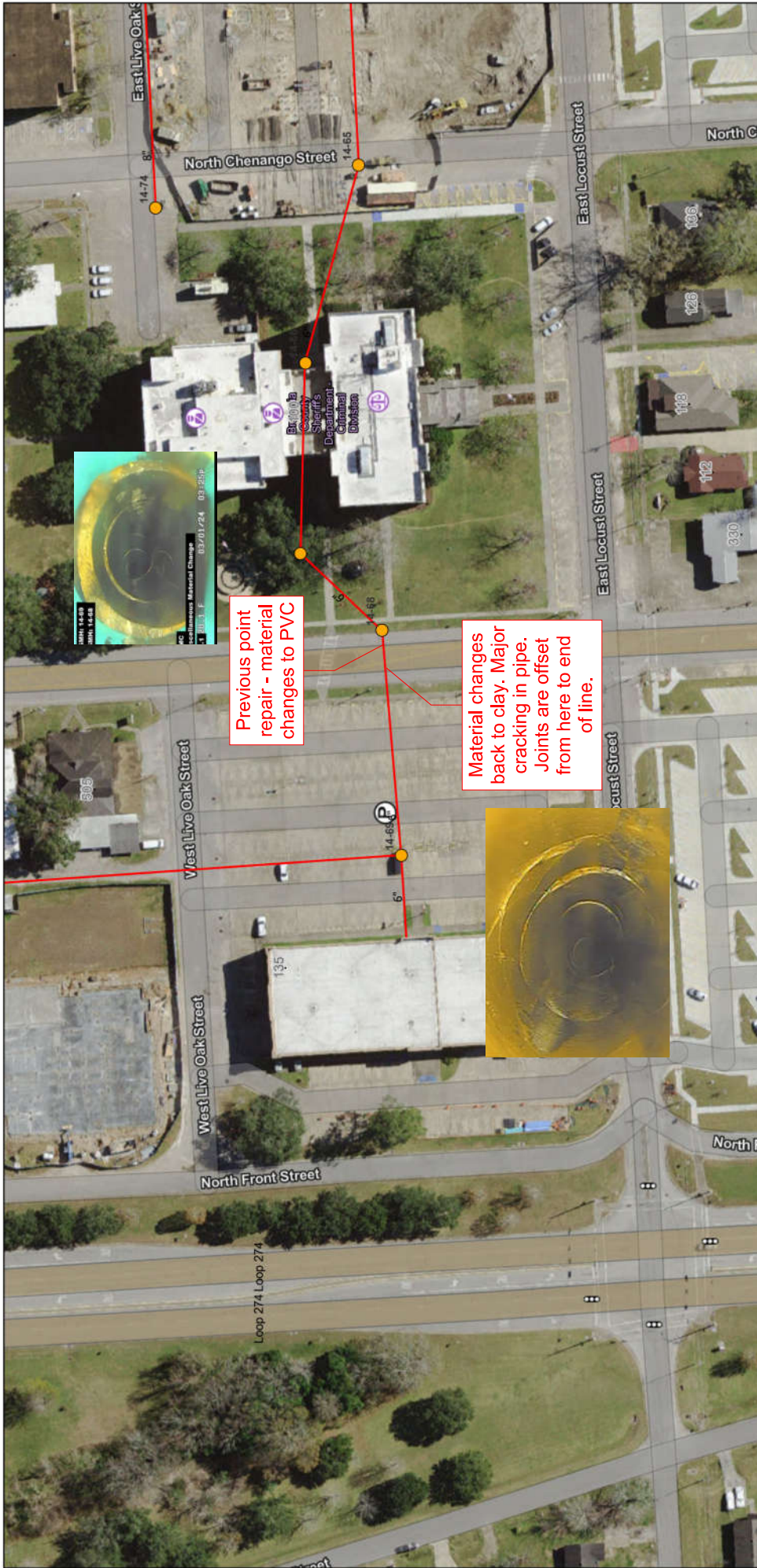
- STATIONS
- BLANKETS
- SEWER MAINS
- PREPARED MAINS
- LATERAL LINES
- MANHOLES
- VALVES
- LIFT STATIONS
- Water Distribution System
- WATER MAINS
- WATER TRANSFER LINES
- WATER TANKS
- LATERAL LINES
- SPONGE TRAPS
- FLOW REGULATORS
- GROUNDWATER WELLS
- CITY LIMITS

— Able to TV
— Unable to TV



SANITARY SEWER AND WATER DISTRIBUTION MAP
CITY OF ANGLETON

Exhibit A



Previous point repair - material changes to PVC

Material changes back to clay. Major cracking in pipe. Joints are offset from here to end of line.

1/31/2024, 4:52:52 PM

- Streets
- Address Points
- Sanitary Sewer - Manholes
- Sanitary Sewer - Gravity Mains



Map data © OpenStreetMap contributors, Microsoft, Facebook, Inc. and its affiliates, Esri Community Maps contributors. Map layer by Esri. Sources: Esri, Airbus DS, USGS, NGA, NASA, CGIAR, N Robinson, NCEAS, NLS, OS, NMA, Geodatasynelsen, Rijkswaterstaat, GSA, Geoland, FEMA, Intermap and the GIS user

ArcGIS Web AppBuilder

Esri Community Maps Contributors, Brazoria County, Texas Parks & Wildlife, © OpenStreetMap, Microsoft, CONANP, Esri, TomTom, Garmin, Foursquare, SafeGraph, GeoTechnologies, Inc, MET/NASA, USGS, EPA, NPS, US Census Bureau, USDA, USFWS | BCAD GIS TEAM

Exhibit B



2/1/2024, 8:26:53 AM

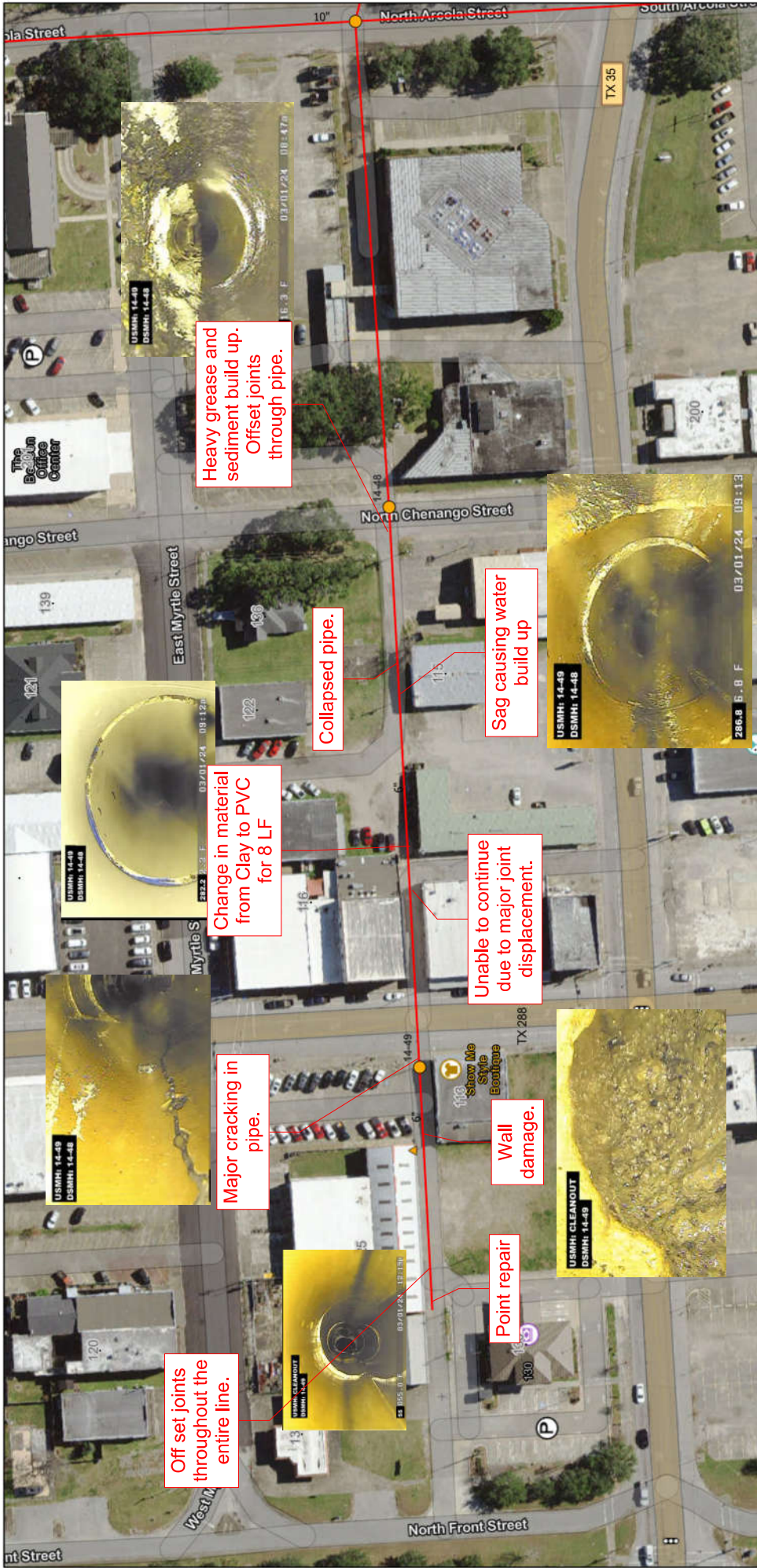
- Streets
- Address Points
- Sanitary Sewer - Manholes
- Sanitary Sewer - Gravity Mains
- Sanitary Sewer - Cleanouts

Map data © OpenStreetMap contributors, Microsoft, Facebook, Inc. and its affiliates, Esri Community Maps contributors. Map layer by Esri. Sources: Esri, Airbus DS, USGS, NGA, NASA, CGIAR, N Robinson, NCEAS, NLS, OS, NMA, Geodatasyrisen, Rijkswaterstaat, GSA, Geoland, FEMA, Intermap and the GIS user

ArcGIS Web AppBuilder

Esri Community Maps Contributors, Brazoria County, Texas Parks & Wildlife, © OpenStreetMap, Microsoft, CONANP, Esri, TomTom, Garmin, Foursquare, SafeGraph, Inc, METINASA, USGS, EPA, NPS, US Census Bureau, USDA, USFWS | BCAD GIS TEAM

Exhibit C



2/1/2024, 8:30:46 AM

- Streets
- Address Points
- Sanitary Sewer - Manholes
- Sanitary Sewer - Gravity Mains
- Sanitary Sewer - Cleanouts



Map data © OpenStreetMap contributors, Microsoft, Facebook, Inc. and its affiliates, Esri Community Maps contributors, Map layer by Esri, Sources: Esri, Airbus DS, USGS, NGA, NASA, CGIAR, N Robinson, NCEAS, NLS, OS, NMA, Geodataslyseisen, Rijkswaterstaat, GSA, Geoland, FEMA, Intermap and the GIS user

ArcGIS Web AppBuilder

Esri Community Maps Contributors, Brazoria County, Texas Parks & Wildlife, © OpenStreetMap, Microsoft, CONANP, Esri, TomTom, Garmin, Foursquare, SafeGraph, Inc, METINASA, USGS, EPA, NPS, US Census Bureau, USDA, USFWS | BCAD GIS TEAM:

STP 97(369)UM
Brazoria

154316, DGN 3/27/97

COUNTY: _____ PROJ. NO. _____
HWY. NO. _____ LETTING DATE _____
DATE ACCEPTED _____

INDEX OF SHEETS
SHEET NO. _____ DESCRIPTIONS
SEE SHEET NO. 2 FOR INDEX OF SHEETS

WORK PERFORMED IN
SUBSTANTIAL CONFORMANCE
WITH FINAL PLANS AND
CONTRACT.



FINAL PLANS

STATE OF TEXAS
DEPARTMENT OF TRANSPORTATION

PLANS OF PROPOSED
STATE HIGHWAY IMPROVEMENT

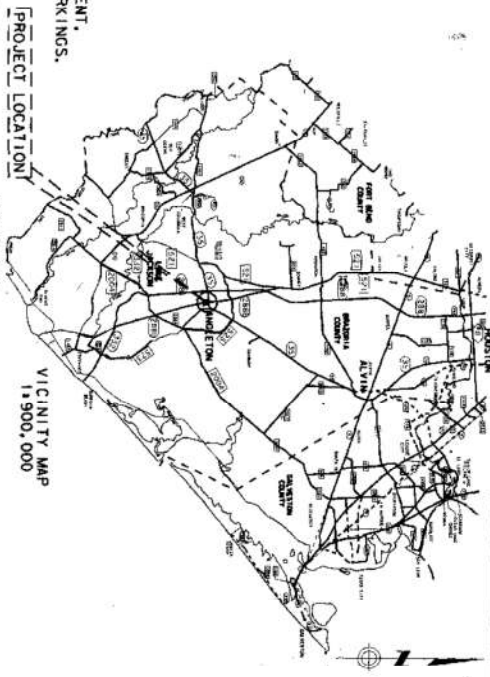
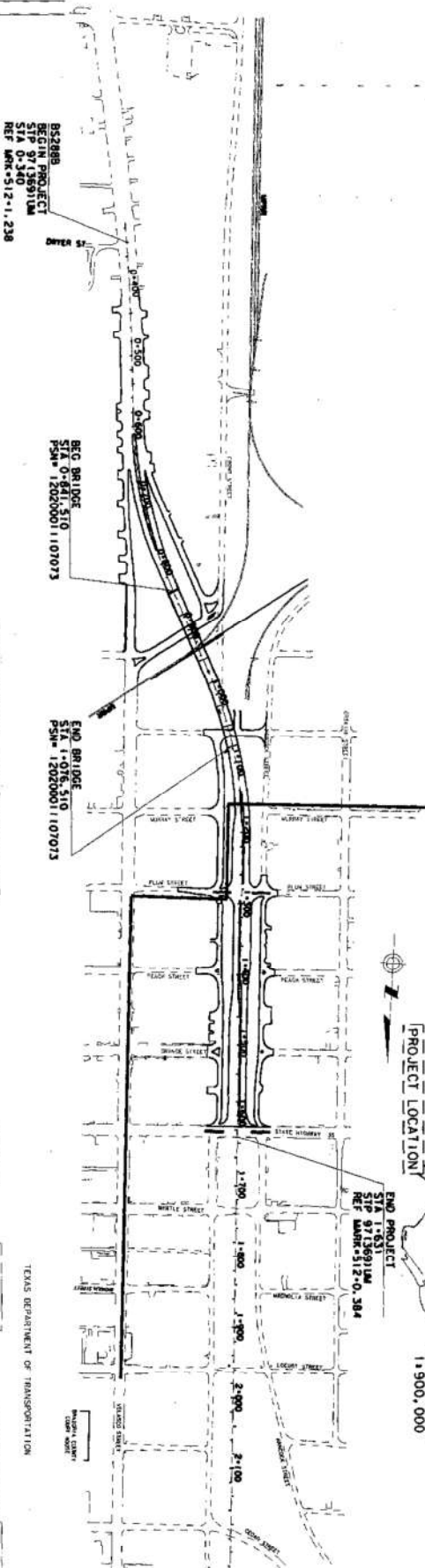
BRAZORIA COUNTY
BS 288B

LIMITS: FROM DWYER STREET TO SH 35

NET LENGTH OF PROJECT-ROADWAY: 1.056m
BRIDGE: 235m
TOTAL: 1.291m

FOR THE CONSTRUCTION OF A NEW LOCATION
NON-FREEMWAY FACILITY CONSISTING OF GRADING,
STRUCTURES, CEM TREATED BASE, ASPH CONC PAVEMENT,
SIGNING, SIGNALS ILLUMINATION AND PAVEMENT MARKINGS.

SUMMARY OF CHANGES
ORDERS
Page 1 B



SPECIFICATIONS ADOPTED BY THE TEXAS DEPARTMENT OF TRANSPORTATION,
MARCH 1, 1995 AND THE SPECIFICATION ITEM LISTED AND DATED AS FOLLOWS,
SHALL GOVERN ON THIS PROJECT. REQUIRED CONTRACT PROVISIONS,
FURNISH AND CONSTRUCTION CONTRACTS (FORM FHWA 1273), DECEMBER, 1993).

PROJECT LOCATION MAP
CONTRACTOR'S NAME: *Green & Root*
LETTING DATE: *7-9-97*
WORK BEGAN DATE: *11-17-97*
WORK COMPLETION DATE: *6-4-99*
ACCEPTANCE DATE: *6-4-99*

EXCEPTIONS: NONE
EIGHT (8) SHEETS
PLAN NUMBER ONE
LAYOUT SCALE: 1"=600'

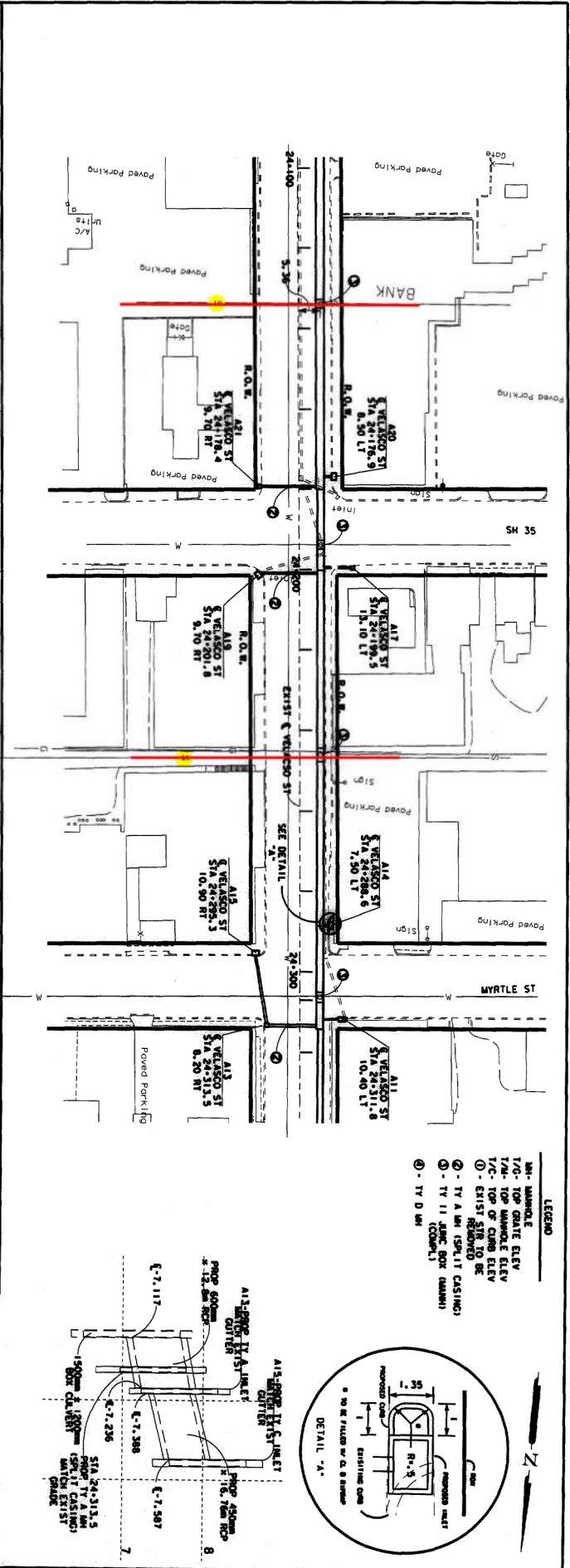
TECHNICAL APPROVALS

DESIGNED BY: _____
CHECKED BY: _____
APPROVED FOR LETTING: *3/31/97*
PER: *John J. Johnson, PE*

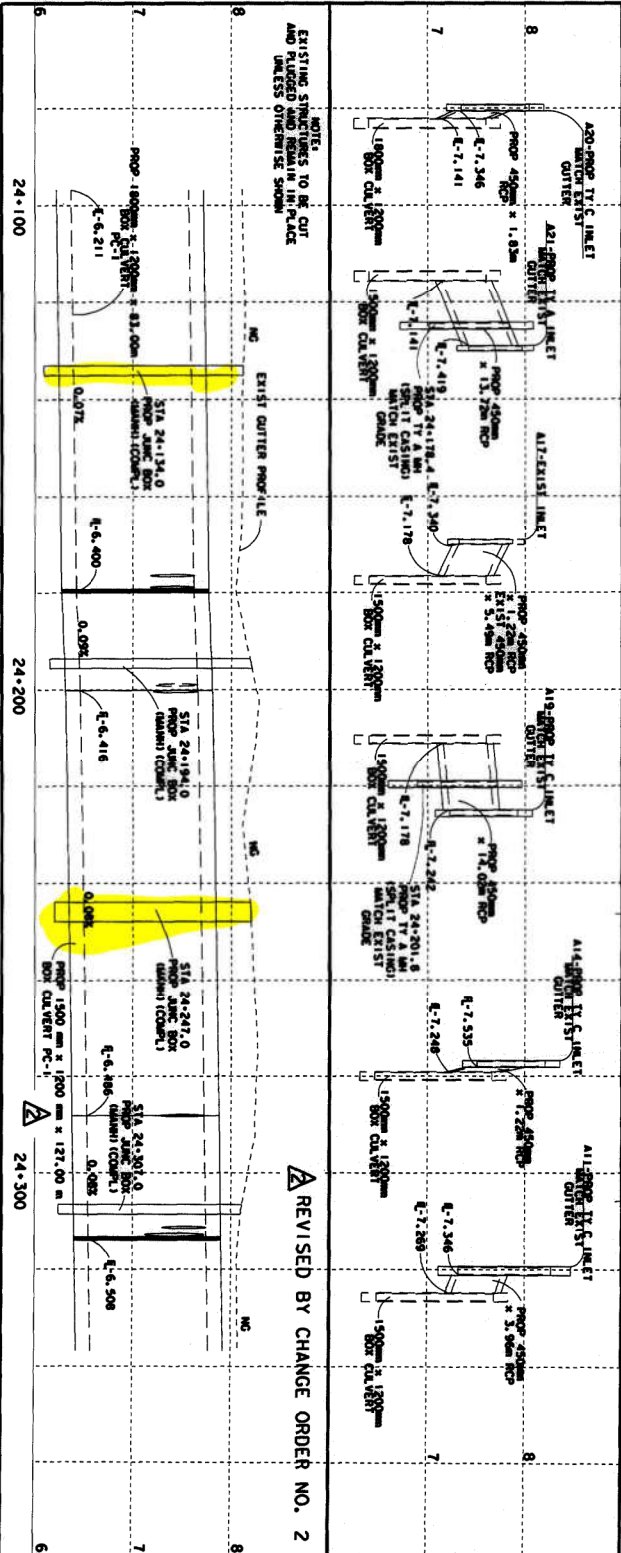
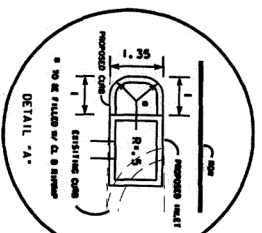
APPROVED FOR LETTING: *5/22/97*
DIRECTOR: *Martha C. Spivey, PE*

STATE	TX	PROJECT NO.	STP 97(369) UM
COUNTY	BR	SHEET NO.	1
DATE	07	DATE	03/27/97
SCALE	AS SHOWN	SCALE	AS SHOWN

DESIGN SPEED - 70MPH



- LEGEND**
- MANHOLE
 - TOP MANHOLE ELEV
 - TOP OF CURB ELEV
 - EXIST. RIMMED OR
 - TY II JMC BOX (CASHING)
 - TY D MH



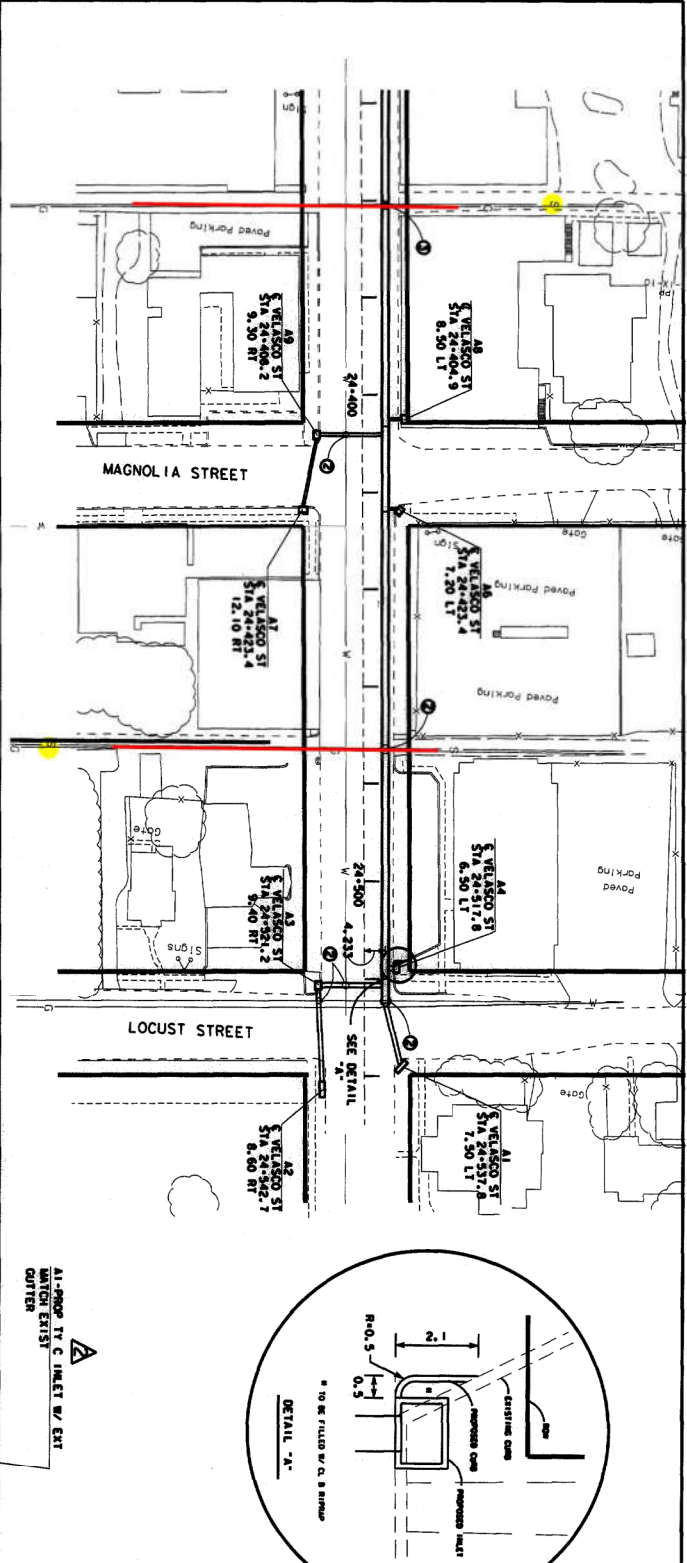
REVISED BY CHANGE ORDER NO. 2

STORM SEWER
PLAN AND PROFILE
FOR
MURRAY/VELASCO ST
TRUNKLINE A
 STA 24+097.32 TO STA 24+337.32

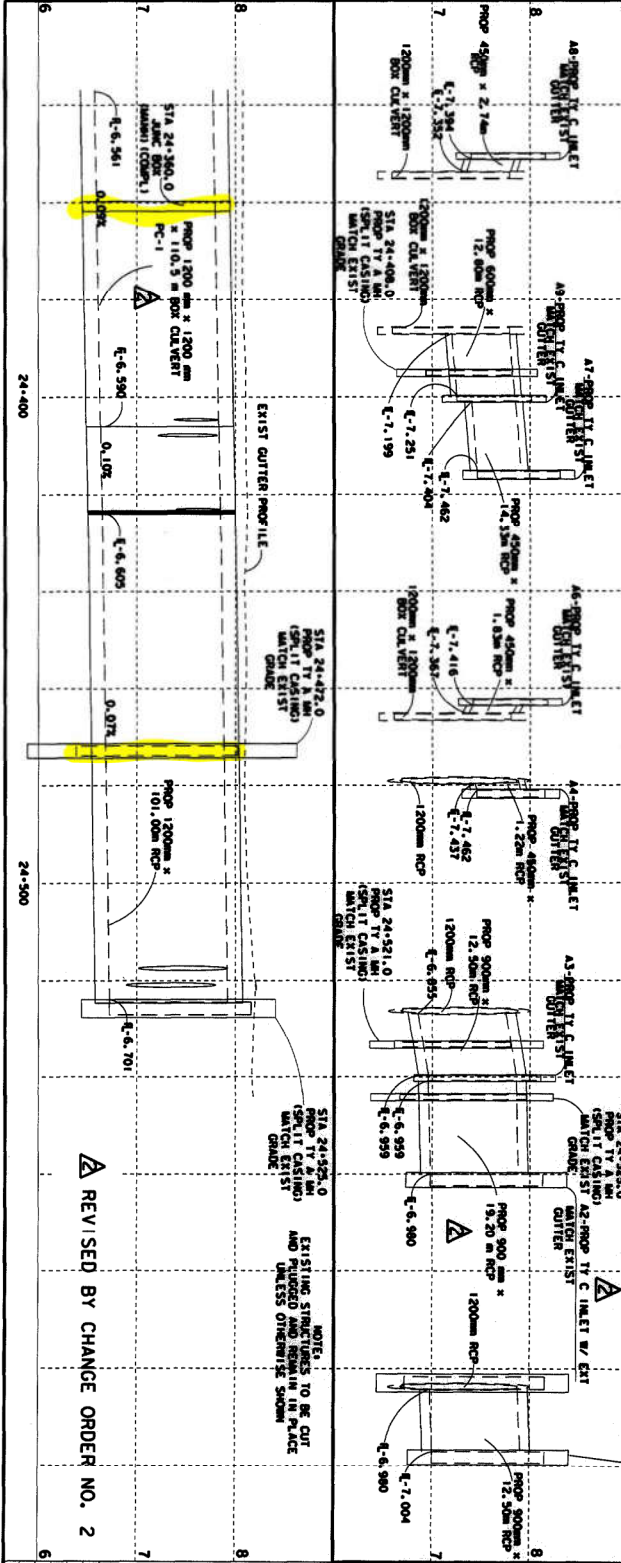
The seal operation on this document was performed by me, Donald R. Reed, P.E., on 2/16/98.

Donald R. Reed, P.E.
 2/16/98

SCALE 1"=1000 HORIZ
 1"=50 VERT
 SHEET 5 OF 15
 FEDERAL AID PROJECT NO. STP 97(369)1M
 DIST. HOU COUNTY BRAZORIA
 STATE TEXAS DIST. 149 A
 COUNTY BRAZORIA
 DIST. 037
 HIGHWAY NO. BS2898



- LEGEND**
- M - MANHOLE
 - T/G - TOP GRADE ELEV
 - T/B - TOP BOTTOM ELEV
 - T/C - TOP OF CURB ELEV
 - - EXIST SIB TO BE REMOVED
 - ⊙ - TY A MH (SPLIT CASING)
 - ⊙ - TY B MH (SPLIT CASING)
 - ⊙ - TY C MH (SPLIT CASING)
 - ⊙ - TY D MH



REVISSED BY CHANGE ORDER NO. 2

**STORM SEWER
PLAN AND PROFILE
FOR
MURRAY/VELASCO ST
TRUNKLINE A**

STA 24+337.32 TO STA 24+525.00

SCALE 1:1000 HORIZ

SHEET 6 OF 15

PROJECT NO.	STP 971369JUM
DATE	150 A
STATE	TEXAS
COUNTY	BRAZORIA
SECTION	037
JOB NO.	BS2888
DATE	0111



The seal is operating on this document by approval of the State of Texas, License No. 41262.

Donald R. Rowland, P.E.

Texas Department of Transportation

Sanitary Sewer

- EXISTING SANITARY
- PROPOSED SANITARY
- LATERAL LINES
- MANHOLES
- VALVES
- LIFT STATIONS
- Water Distribution System
- PROPOSED TRUNK
- TRUNK MANHOLES
- PROPOSED SERVICE
- PROPOSED SERVICE MANHOLES

Water Distribution System

- PROPOSED TRUNK
- TRUNK MANHOLES
- PROPOSED SERVICE
- PROPOSED SERVICE MANHOLES



SANITARY SEWER AND WATER DISTRIBUTION MAP
CITY OF ANGLETON

PATH: \\WORK\PC\B\ANGELTON\ANGELTON_MAP_SANITARY\ANGELTON_WATER AND SEWER MAP CDMA TO ORANGE STREET\ANGELTON WATER AND SEWER MAP CDMA TO ORANGE STREET\APR - USER: SBMTH - DATE: 12/20/22

OPINION OF PROBABLE CONSTRUCTION COST					
Water/Sewer Rehabilitation Project					
CITY OF ANGLETON, TX					
JANUARY 2023					
Water Line					
ITEM NO.	ITEM DESCRIPTION	UNIT	QUAN.	UNIT PRICE	TOTAL AMOUNT
A) GENERAL ITEMS					
1	Traffic Control, including Flagmen, Signs, Barrels, Barricades, Arrow Boards, Maintaining All Weather Access to Traffic, Temporary Transitions from Proposed Pavement to Existing Pavement, Relocating Existing Mailboxes and Traffic Signs, and Temporary Mailboxes, complete in place, the sum of:	L.S.	1	75,000	75,000
2	Temporary Sediment Control including Inlet protection barriers, Stage I and II inlets and existing inlets, including filter fabric fence, gravel bags, repair and replacement, maintenance and removal of sediments and DPES requirements, complete in place, the sum of:	L.S.	1	25,000	25,000
WATER ITEMS					
3	Furnish and install 8-inch PVC C-900 DR18 CL 235 water line, all fittings, by augured construction as shown on plans, complete in place, the sum of:	LF	2595	\$ 85.00	\$ 220,575.00
4	1" wet connection, complete in place, the sum of:	EA	1	\$ 200.00	\$ 200.00
5	2" wet connection, complete in place, the sum of:	EA	3	\$ 300.00	\$ 900.00
6	4" wet connection, complete in place, the sum of:	EA	3	\$ 400.00	\$ 1,200.00
7	6" wet connection, complete in place, the sum of:	EA	1	\$ 1,100.00	\$ 1,100.00
8	8" wet connection, complete in place, the sum of:	EA	7	\$ 1,200.00	\$ 8,400.00
9	8"x8" TS&V, complete in place, the sum of:	EA	5	\$ 5,000.00	\$ 25,000.00
10	Cut, plug, and abandon existing 2"-8" water line, complete in place, the sum of:	EA	7	\$ 140.00	\$ 980.00
11	Short side water service connection replacement, complete in place, the sum of:	EA	9	\$ 1,000.00	\$ 9,000.00
12	Long side water service connection replacement, complete in place, the sum of:	EA	13	\$ 1,300.00	\$ 16,900.00
13	Remove and salvage existing fire hydrant, including gate valve and box, complete in place, the sum of:	EA	3	\$ 60.00	\$ 180.00
14	Furnish and install fire hydrant assembly, including 6-inch gate valve and box and hydrant lead, complete in place, the sum of:	EA	3	\$ 7,000.00	\$ 21,000.00
15	Furnish and Install 6" Gate Valve & Box, complete in place, the sum of:	EA	2	\$ 2,200.00	\$ 4,400.00
16	Furnish and Install 8" Gate Valve & Box, complete in place, the sum of:	EA	14	\$ 3,000.00	\$ 42,000.00
17	14" steel casing on 8" PVC SDR 26 water line with restrained joints throughout casing, complete in place, the sum of:	LF	180	\$ 105.00	\$ 18,900.00
18	Abandon valve	EA	3	\$ 200.00	\$ 600.00
19	Plug existing 2"-8" water line, complete in place, the sum of:	EA	4	\$ 800.00	\$ 3,200.00
B) PAVING ITEMS					
20	Concrete point repair including removal and disposal of existing concrete pavement and subgrade, and proposed reinforcing, joints, dowels, paving under cut, and replacement of 7" thick concrete and 12" thick cement stabilized sand subgrade, complete in place, the sum of:	SY	277.8	\$ 180.00	\$ 50,000.00
21	Remove existing sidewalk and replace with 4"-thick sidewalk, complete in place, the sum of:	SF	1265	\$ 8.00	\$ 10,120.00
22	Remove and replace existing concrete curb ramp, complete in place, the sum of:	EA	8	\$ 2,600.00	\$ 20,800.00
C) SANITARY SEWER ITEMS					
23	8" PVC SDR 26 sanitary sewer (by auger), including bedding and backfill, complete in place, the sum of:	LF	350	\$ 155.00	\$ 54,250.00
24	4' diameter sanitary sewer manhole, including bedding and backfill, complete in place, the sum of:	EA	4	\$ 4,500.00	\$ 18,000.00
25	Sanitary sewer service reconnection (by excavation), including fittings, all depths, complete in place, the sum of:	EA	3	\$ 1,200.00	\$ 3,600.00
26	Tie existing sanitary sewer into proposed manhole, complete in place, the sum of:	EA	3	\$ 2,500.00	\$ 7,500.00
27	14" steel casing on 8" PVC sanitary sewer, complete in place, the sum of:	LF	195	\$ 325.00	\$ 63,375.00
28	Plug existing 2"-8" sanitary line, complete in place, the sum of:	EA	1	\$ 500.00	\$ 500.00
GENERAL ITEMS TOTAL:					\$ 100,000.00
WATER ITEMS TOTAL:					\$ 374,535.00
PAVING ITEMS TOTAL:					\$ 80,920.00
SANITARY SEWER ITEMS TOTAL:					\$ 147,225.00
MISCELLANEOUS ITEM (30%):					\$ 182,740.00
TOTAL AMOUNT					\$ 885,420.00