

ALL WORK ON THIS SPECIFICATION SHOULD BE PERFORMED IN ACCORDANCE WITH THE SCHEDULE INCLUDED WITH THE SITEWORK CONSTRUCTION MANUAL. (AS APPLICABLE)

2. PROTECTION OF EXISTING FACILITIES

A. UTILITIES TO REMAIN UTILITIES AND IMPROVEMENTS NOT DESIGNATED FOR REMOVAL AND RESTORE DAMAGED OR TEMPORARILY RELOCATED UTILITIES AND IMPROVEMENTS.

VERIFY EXACT LOCATIONS AND DEPTHS OF UTILITIES SHOWN AND MAKE EXPLORATORY EXCAVATIONS AT UTILITIES THAT MAY INTERFERE WITH THE PROPOSED CONSTRUCTION.

1. PERFORM EXPLORATORY EXCAVATIONS AS SOON AS PRACTICABLE AFTER AWARE OF CONTRACT AND A SUFFICIENT TIME IN ADVANCE OF CONSTRUCTION TO AVOID DELAYS TO THE WORK.

2. PERFORM EXPLORATORY EXCAVATIONS SHOW UTILITY LOCATION AS SHOWN TO BE IN ERROR, NOTIFY ENGINEER.

3. PERFORM EXPLORATORY EXCAVATIONS REQUIRED TO SUFFICIENTLY DETERMINE ALIGNMENT AND DEPTHS OF EXISTING UTILITIES.

4. DO NOT ENTER NOR OCCUPY WITH MEN, EQUIPMENT, OR MATERIALS, ANY LANDS OUTSIDE THE REFERENCED SITE.

5. TAKE ALL NECESSARY PRECAUTIONS TO PRESERVE PRIVATE AND PUBLIC PROPERTY IN THE IMMEDIATE AREA OF WORK SITES.

6. ASSUME TOTAL LIABILITY FOR DAMAGE TO PRIVATE AND/OR PUBLIC PROPERTY DURING THE PROTECTION OF THE WORK.

3. PROTECTION OF SURVEY MARKERS

A. DO NOT DESTROY, REMOVE, OR OTHERWISE DISTURB EXISTING SURVEY MARKERS OR OTHER EXISTING OBSTRUCTIONS OF THE MARKERS WITHOUT PROPER AUTHORIZATION.

B. CONTACT THE SURVEYOR OF RECORD TO DETERMINE LOCATION OF ALL SURVEY MARKERS.

C. NO WORK SHALL BE STARTED UNTIL ALL SURVEY OR OTHER PERMANENT MARKER POINTS THAT WILL BE DISTURBED BY THE CONSTRUCTION OPERATIONS HAVE BEEN PROPERLY REFERENCED FOR EASY AND ACCURATE RESTORATION.

D. ACCURATELY RESTORE SURVEY MARKERS OR POINTS DISTURBED BY CONTRACTOR AT CONTRACTOR'S EXPENSE AFTER WORK HAS BEEN COMPLETED.

4. PAYMENT

A. PAYMENTS SUBMITTED TO PARTIAL REMOVAL SHALL BE HEAVILY SAID CUT IN STRAIGHT LINES UNLESS OTHERWISE NOTED.

5. DEMOLITION

A. DEMOLITION SHALL INCLUDE COMPLETE REMOVAL AND DISPOSAL OF DESIGNATED STRUCTURES WITHIN THE LIMITS OF DEMOLITION SHOWN ON THE DRAWINGS, AND SHALL INCLUDE BUT NOT BE LIMITED TO THE FOLLOWING WORK:

1. REMOVAL OF ALL STRUCTURES AND FOUNDATIONS TO A MINIMUM OF TWO (2) FEET BELOW FINISHED GRADE AND COMPLETE REMOVAL OF ALL ASSOCIATED PIPING, HIRING, DUCTWORK, AND EQUIPMENT.

2. BREAK-UP AND REMOVAL OF SLABS-ON-GRADE. SLABS SHALL BE COMPLETELY REMOVED.

3. REMOVAL OF ALL EXISTING CONCRETE UTILITIES, ON-SITE SOIL COMPACTIVITY AS PERCENTAGE (ASTM D698), OR AS INSTRUCTED BY THE GEOTECH ENGINEER, WHICHEVER IS MORE STRINGENT.

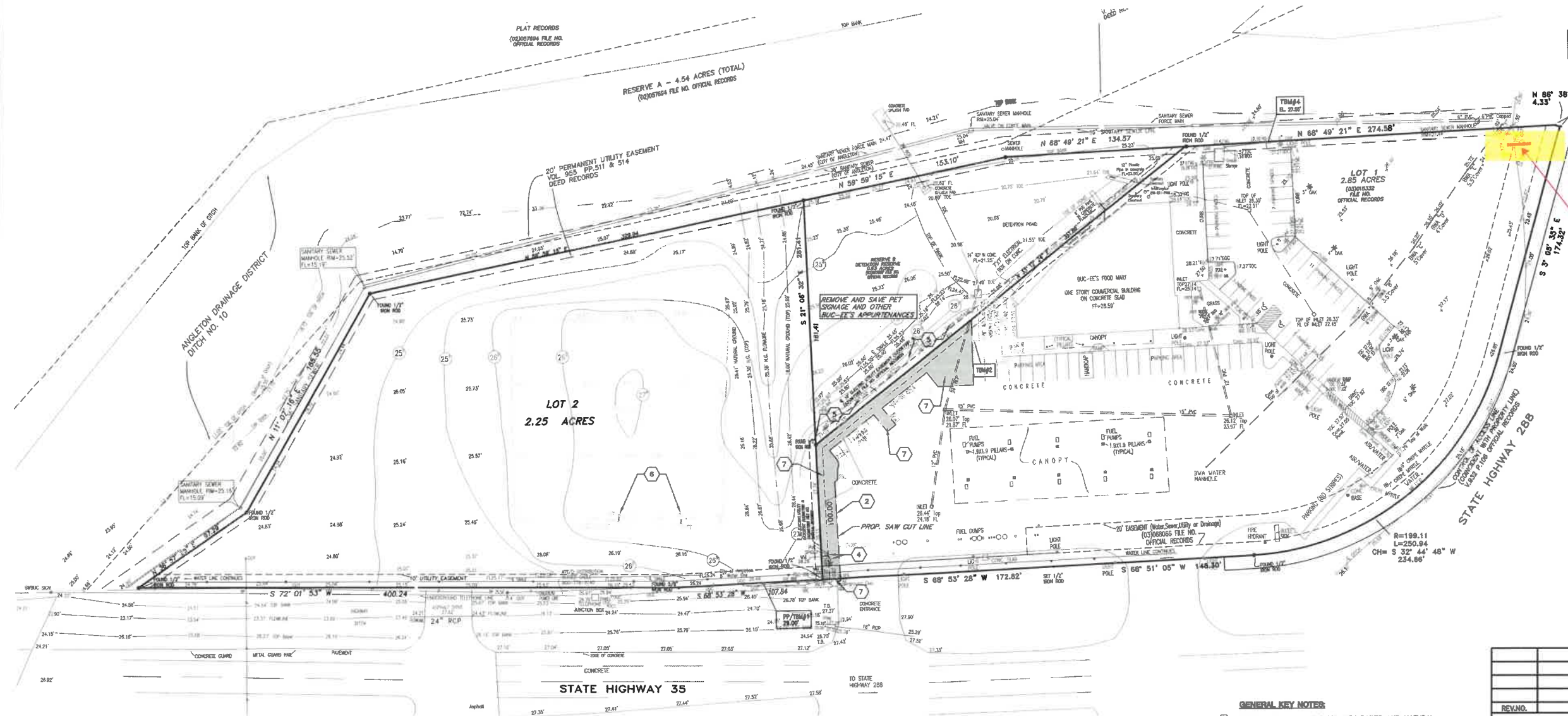
- a) PROVISIONS FOR TEMPORARY BRACING AND SHORING AS REQUIRED UNTIL DEMOLITION AND BACKFILLING WORK IS COMPLETE.
 - b) UNIFORM GRADING OF DEMOLITION AREA TO MATCH EXISTING GRADE OF PERIMETER.
 - c) REMOVAL OF SIDEWALKS, CURBS AND CONCRETE PAVEMENTS, AND ANY OTHER IMPROVEMENTS OR PROPERTY DAMAGED BY DEMOLITION OPERATIONS.
 - d) CLEANING OF ADJACENT STRUCTURES, IMPROVEMENTS, STREETS, SIDEWALKS, AND PROPERTY OF ADJACENT UTILITIES.
 - e) DEMOLITION SHALL BE BY CONVENTIONAL DEMOLITION METHODS USING HEAVY LIGHT MECHANICAL MEANS AS WELL AS HAND DEMOLITION METHODS. USE OF EXPLOSIVES SHALL NOT BE PERMITTED.
 - f) BURIAL OF REMAINING MATERIALS SHALL BE IN ACCORDANCE WITH THE NEIGHBORING PROPERTY.
 - g) THE CONTRACTOR SHALL LIMIT DUST AND DIRT CAUSED BY DEMOLITION OPERATIONS SO AS TO COMPLY WITH GOVERNING REGULATIONS PERTAINING TO ENVIRONMENTAL PROTECTION.
 - h) THE CONTRACTOR SHALL NOT BE RESPONSIBLE FOR THE PROTECTION OF NEIGHBORING PROPERTIES AND/OR BUILDING TO REMAIN OPERATIONAL DURING PHASES OF DEMOLITION, EXCEPT WHEN AUTHORIZED IN WRITING BY AUTHORITIES HAVING JURISDICTION. CONTRACTOR SHALL PROVIDE PROTECTION DURING UTILITIES EXPOSURE TO EXISTING UTILITIES, AS DIRECTED BY PROTECTING AUTHORITIES.
- REQUIREMENTS:
- a) CONFORM TO APPLICABLE CODE FOR DEMOLITION OF STRUCTURES, SAFETY OF ADJACENT STRUCTURES, DUST CONTROL, RUNOFF CONTROL, AND DISPOSAL.
 - b) OBTAIN REQUIRED PERMITS FROM AUTHORITY.
 - c) NOTIFY APPLICABLE UTILITY COMPANIES BEFORE STARTING WORK AND COMPLY WITH THEIR REQUIREMENTS.
 - d) DO NOT CLOSE OR OBSTRUCT ROADWAYS, SIDEWALKS, OR HYDRANTS WITHOUT PERMITS.
- PREPARATION
- a) PROVIDE, ERECT, AND MAINTAIN TEMPORARY BARRIERS AND SECURITY DEVICES PRIOR TO WORK.
 - b) PROVIDE ACCESS TO ADJACENT UTILITIES AND STRUCTURES WHICH ARE NOT TO BE DEMOLISHED. SEE CIVIL DRAWINGS FOR FURTHER NOTES & CONSIDERATIONS.
 - c) PREVENT INGRESS OR SETTLEMENT OF ADJACENT STRUCTURES. PROVIDE BRACING AND SHORING.
 - d) PREVENT COLLAPSE OF EXISTING UTILITIES.
- PROTECTION OF EXISTING UTILITIES AND IMPROVEMENTS
- a) PROTECT EXISTING UTILITIES AND OTHER IMPROVEMENTS WHICH MAY BE IMPAIRED DURING CONSTRUCTION OPERATIONS.
 - b) DETERMINE ACTUAL LOCATION OF EXISTING UTILITIES AND OTHER IMPROVEMENTS THAT WILL BE IMPAIRED DURING CONSTRUCTION OPERATIONS.
 - c) ADEQUATELY PROTECT UTILITIES AND OTHER IMPROVEMENTS FROM DAMAGE DUE TO CONSTRUCTION OPERATIONS.
 - d) TAKE NECESSARY PRECAUTIONS FOR PROTECTING UNFORESEEN UTILITY LINES TO PROVIDE FOR UNINTERRUPTED SERVICE AND TO PROVIDE NECESSARY SPECIAL PROTECTION.

3. OWNER'S RIGHT OF ACCESS: OWNER AND OWNERS OF PUBLIC UTILITIES RESERVE THE RIGHT TO ENTER AT ANY TIME UPON ANY PUBLIC STREET, ALLEY, ROUTE-OR-WAY, OR EASEMENT FOR THE PURPOSE OF MAKING CHANGES IN THEIR PROPERTY.
4. UNDERGROUND UTILITIES INDICATED:
- a) EXISTING UTILITY LINES TO BE RETAINED, THAT ARE INDICATED OR LOCATIONS OF WHICH ARE MADE KNOWN TO CONTRACTOR PRIOR TO EXCAVATION, AND UTILITY LINES CONSTRUCTED DURING EXCAVATION OPERATIONS SHALL BE PROTECTED FROM DAMAGE DURING EXCAVATION AND BACKFILLING.
- 2) IF DAMAGED, CONTRACTOR SHALL IMMEDIATELY REPAIR OR REPLACE.
5. UNDERGROUND UTILITIES NOT INDICATED: IF CONTRACTOR DAMAGES EXISTING UTILITY LINES THAT ARE NOT INDICATED OR THE LOCATIONS OF WHICH ARE NOT MADE KNOWN TO CONTRACTOR PRIOR TO EXCAVATION, CONTRACTOR SHALL IMMEDIATELY MAKE A REPAIR OR REPLACE.
6. APPROVAL OF REPAIRS: REPAIRS TO A DAMAGED UTILITY OR IMPROVEMENT SHALL BE SUBJECT TO REVIEW AND APPROVAL BY THE CITY ENGINEER. THE CITY ENGINEER OF THE UTILITY OR IMPROVEMENT OWNER BEFORE BEING CONCEALED BY BACKFILL OR OTHER WORK.
7. MAINTAINING IN SERVICE:
- a) DURING CONSTRUCTION, CONTINUOUSLY MAINTAIN OIL AND GASOLINE PIPELINES; POWER, TELEPHONE, AND COMMUNICATION CABLE DUCTS; GAS AND WATER MAINS; IRRIGATION LINES; SEWER LINES; STORM DRAIN LINES; POLES, OVERHEAD POWER, AND COMMUNICATION WIRES AND CABLES. CONTRACTOR SHALL MAINTAIN ALL UTILITIES AND STRUCTURES IN THE SAME ARRANGEMENTS APPROVED BY ENGINEER ARE MADE WITH THE OWNERS OF THE FACILITIES.
- b) BE RESPONSIBLE FOR AND REPAIR DAMAGE DUE TO CONSTRUCTION OPERATIONS, EVEN IF DAMAGE OCCURS AFTER BACKFILLING OR IS NOT DISCOVERED UNTIL AFTER COMPLETION OF BACKFILLING.
8. NOTIFICATION BY CONTRACTOR:
- a) PRIOR TO EXCAVATION, ADVISE THE VICINITY OF EXISTING UNDERGROUND FACILITIES (INCLUDING WATER, SEWER, STORM DRAIN, GAS, PETROLEUM PRODUCTS, OR OTHER PIPELINES; BURIED ELECTRIC POWER, COMMUNICATIONS, OR TELEVISION CABLES; TRAFFIC SIGNAL, AND STREET LIGHTING FACILITIES; AND OTHER STRUCTURES) AND STATE THE LOCATION OF EACH FACILITY TO THE CITY ENGINEER. THE CITY ENGINEER REPRESENTING THE OWNERS OR AGENCIES RESPONSIBLE FOR THE FACILITIES NOT LESS THAN 3 DAYS BEFORE THE EXCAVATION BEGINS. ADVISE THE CITY ENGINEER OF ANY CHANGES TO THE LOCATION OF ANY MORE THAN 7 DAYS PRIOR TO EXCAVATION SO THAT A REPRESENTATIVE OF OWNERS OR AGENCIES RESPONSIBLE FOR THE FACILITIES CAN BE PRESENT WHEN EXCAVATION BEGINS.
- b) NOTIFY THE UNDERGROUND SERVICE ALERT OR UTILITY COORDINATION COMMITTEE AT 713-233-4567, 1-800-666-8344 OR 1-800-245-4545 AT LEAST 2 DAYS, BUT NO MORE THAN 14 DAYS, PRIOR TO EXCAVATION.

10. DEMOLITION
 - A. CONDUCT DEMOLITION TO MINIMIZE INTERFERENCE WITH ADJACENT STRUCTURES.
 - B. CEASE OPERATIONS IMMEDIATELY IF ADJACENT STRUCTURES APPEAR TO BE IN DANGER, NOTIFY OWNER. DO NOT RESUME OPERATIONS UNTIL DIRECTED BY OWNER.
 - C. CONDUCT OPERATIONS WITH MINIMUM INTERFERENCE TO PUBLIC OR PRIVATE ACCESS AND ADJACENT UTILITIES. MAINTAIN ACCESS TO ALL ADJACENT UTILITIES.
 - D. DEMOLITION ACTIVITIES SHALL BE WHOLLY CONTAINED WITHIN THE PROPERTY BOUNDARY LINES.
11. DEMOLITION REQUIREMENTS
 - A. DISCONTINUE GAP, AND IDENTIFY DESIGNATED UTILITIES WITHIN DEMOLITION AREAS.
 - B. REMOVE FOUNDATION WALLS AND FOOTINGS TO A MINIMUM OF TWO FEET BELOW FINISHED GRADE.
 - C. REMOVE GRADE AND COMPACT AND RESECTED BY DEMOLITION TO MAINTAIN SITE GRADES AND CONTOURS.
 - D. BACKFILL OPEN PITS AND HOLES CAUSED AS A RESULT OF DEMOLITION PER GEOTECH REPORT.
 - E. REMOVE GRADE AND COMPACT AND RESECTED BY DEMOLITION TO MAINTAIN SITE GRADES AND CONTOURS.
 - F. REMOVE DEMOLISHED MATERIALS FROM SITE.
 - G. DO NOT OPEN OR BURY MATERIALS ON SITE. LEAVE SITE IN CLEAN CONDITION.
 - H. CONTRACTOR TO MAINTAIN POSITIVE DRAINAGE AWAY FROM FACILITIES TO REMAIN IN OPERATION.
12. CONTRACTOR IS RESPONSIBLE FOR COMPLYING WITH ALL REGULATORY AGENCIES AND ANY OTHER ACTS CONCERNING THE RELEASE OF GASES OR LIQUIDS FROM ANY EXISTING EQUIPMENT TO BE DEMOLISHED.

THIS TRACT LIES IN ZONE "X" (UNSHADED), DESIGNATED AS "AREAS DETERMINED TO BE OUTSIDE 500-YEAR FLOODPLAIN", AS PER THE NATIONAL FLOOD INSURANCE PROGRAM FIRM FOR BRAZORIA COUNTY, TEXAS, FIRM PANEL NUMBER 4803C0440H LATEST AVAILABLE PUBLISHED REVISION DATED JUNE 5, 1989.

- TBM #1 60D NAIL IN SECOND POWER POLE WEST OF WEST ENTRANCE ELEVATION= 29.00'
- TBM #2 CHISELED SQUARE ON CURB 5' WEST OF SOUTHWEST CORNER OF DUMPSTER, ELEVATION= 27.75'
- TBM #3 DISC IN CONCRETE HEADWALL NEAR NORTHEAST CORNER ELEVATION= 26.63'
- TBM #4 CHISELED SQUARE ON CONCRETE CURB AT DRIVE AT NORTHEAST CORNER OF PARKING LOT, ELEVATION= 27.55'



SHADED AREA REPRESENTS ALL EXISTING,
PAVEMENT, CURBS, AND SIDEWALKS TO BE
REMOVED.


PROPOSED SAWCUT

- ① CONTRACTOR TO COORDINATE WITH POWER AND NATURAL GAS COMPANY FOR THE RELOCATION/REMOVAL OF EXISTING LINES, POWER POLE AND/OR ELECTRIC LINES. (TYPICAL)
- ② CONTRACTOR TO FULL DEPTH SAWCUT AND REMOVE EXISTING PAVEMENT, CURBS, AND SIDEWALKS WITHIN SHADED LIMITS. ALL PAVEMENT SHALL BE NEATLY SAWCUT AND REMOVED OFF-SITE PROPERLY. COORDINATE DEMOLITION OF PAVEMENT AROUND STORE AREA WITH STORE MANAGER.
- ③ ALL EXISTING TxDOT CULVERTS AND STORM SEWER TO REMAIN.
- ④ CONTRACTOR TO COORDINATE RELOCATION OF DOMESTIC AND IRRIGATION METERS WITH THE CITY OF ANGLETON.
- ⑤ CONTRACTOR TO COORDINATE RELOCATION IF POSSIBLE OR REMOVAL IF EXISTING LANDSCAPE WITHIN PROPOSED PAVING AREA WITH LANDSCAPE ARCHITECT.
- ⑥ CONTRACTOR TO COORDINATE REMOVAL OF EXISTING SIGNAGE.
- ⑦ REMOVE AND SAVE PARKING LOT LIGHTS

ISSUE FOR CONSTRUCTION

5/23/18

REVNO.	DESCRIPTION	DATE	BY
	BUC-EE'S BRAZORIA #25		
	EXISTING CONDITIONS/ DEMOLITION PLAN		



1445 N. LOOP WEST – SUITE 450

HOUSTON, TEXAS 77008

713-993-0333

TBPE Foundation No.: F-003832

DRAWN BY: RJB	SCALE: 1"=40'	PROJECT NO. CONTRACT: 0093-1801
CHECKED BY: JV	DATE: 05.23.18	SHEET C2 OF 18