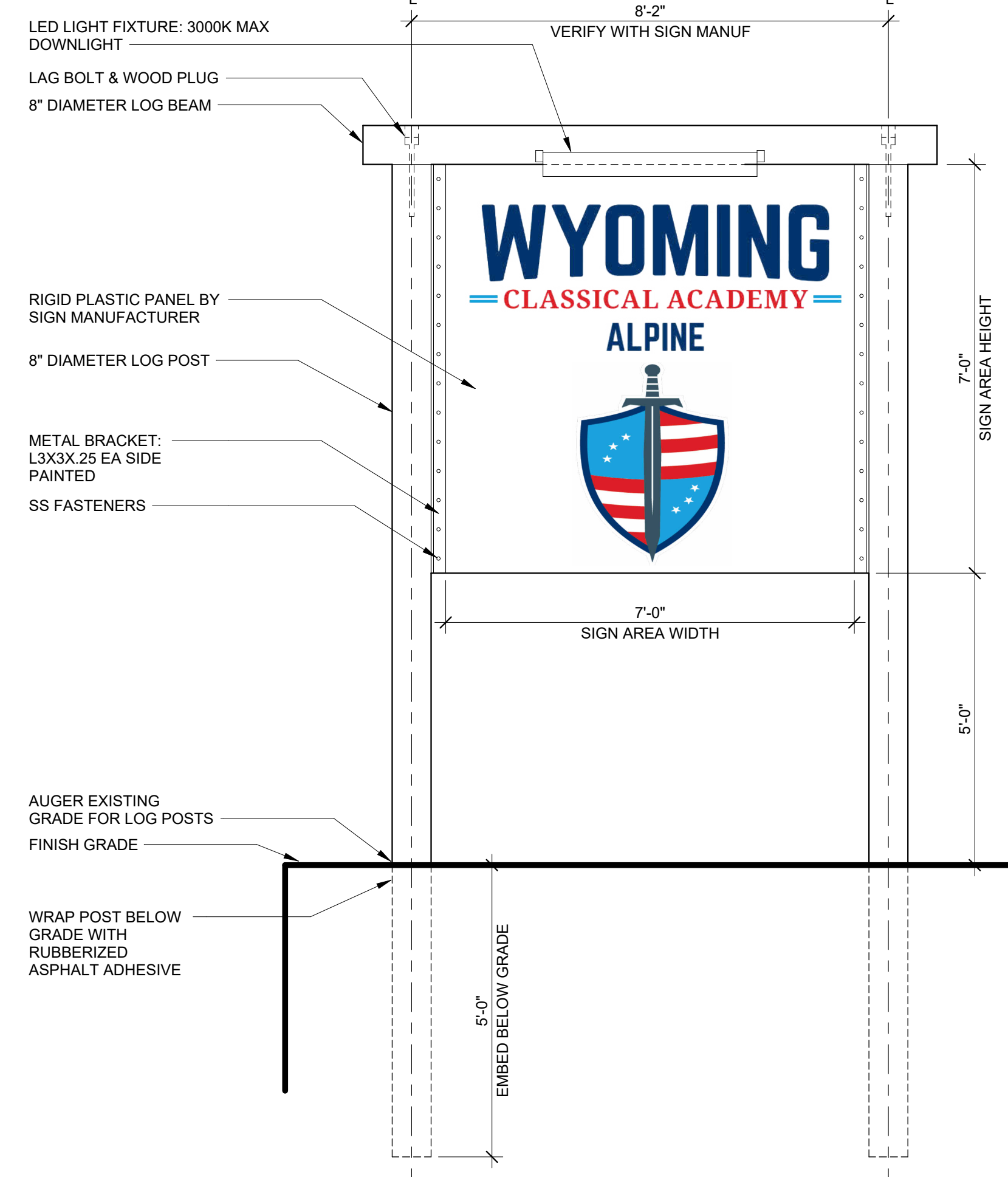
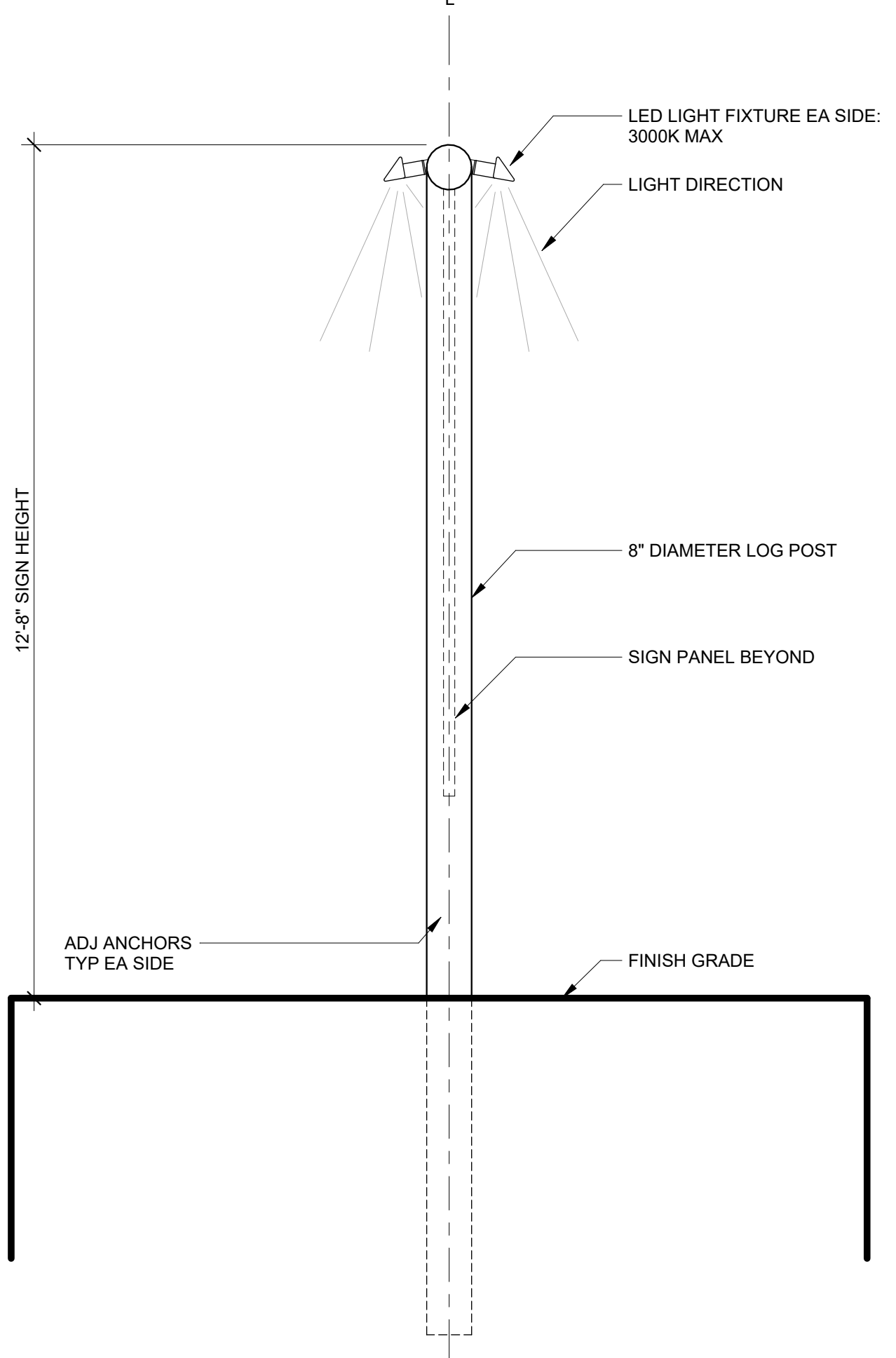


TABLE 4-9
MRC - MIXED RESIDENTIAL COMMERCIAL DISTRICT
SIGN STANDARDS

Type of Sign	Number of Signs Allowed	Maximum Area (sq. ft.)	Sign Height (feet)		Location and Placement	Lighting	Other Criteria
			Min	Max			
Awning	1 per business	N/A	8	Roof line	Only first and second story bldg fronts	Internal lighting not allowed. Downward lighting permitted underneath awning.	Shall not project beyond, above, or below the face of an awning.
Canopy	1 per business	N/A	8	Roof line	None	N/A	Length of canopy may extend to full length of supporting wall.
Window	1 per business	25% of window area	N/A	N/A	Window that adjoins a public right-of-way	Sign may contain internal lighting.	Posters temporary placed in windows exempt from development standards.
Projecting or Suspended	1 per business	6	N/A	See Other Criteria	Shall be placed only on ground floor facade, except for businesses located above ground level w/direct exterior pedestrian access.	Downward Lighting may illuminate sign.	Sign shall not extend higher than wall of single story building or bottom of second story windows. Not permitted in conjunction with wall-mounted or pole signs. Supports and brackets shall be compatible with the design and scale of the sign.
Wall	N/A	N/A	N/A	25' from sidewalk or other finished grade.	Building wall	Sign may contain internal lighting.	Wall sign shall only identify an individual business, a commercial building, or commercial building complex by name or trademark. No portion of sign, including cut-out letters, shall project more than twelve (12) inches from the wall surface.
Freestanding	1 per Business	50	10	15'	Only on a site frontage adjoining a public street or walkway.	Downward Lighting may illuminate sign.	Sign shall be mounted on one or more posts, or have a solid monument-type base. Posts shall not have a diameter greater than twelve (12) inches. Pole signs should not be so large as to obscure the patterns of front facades and yards.
Time and/or Temperature	1 per business	10	N/A	4 (monument) 12 (pole-mounted)	Only on commercial or industrial properties that adjoin a public street.	Sign may contain internal lighting.	
Freestanding Reader Board	None	N/A	N/A	N/A	N/A	N/A	Not allowed.



FRONT ELEVATION

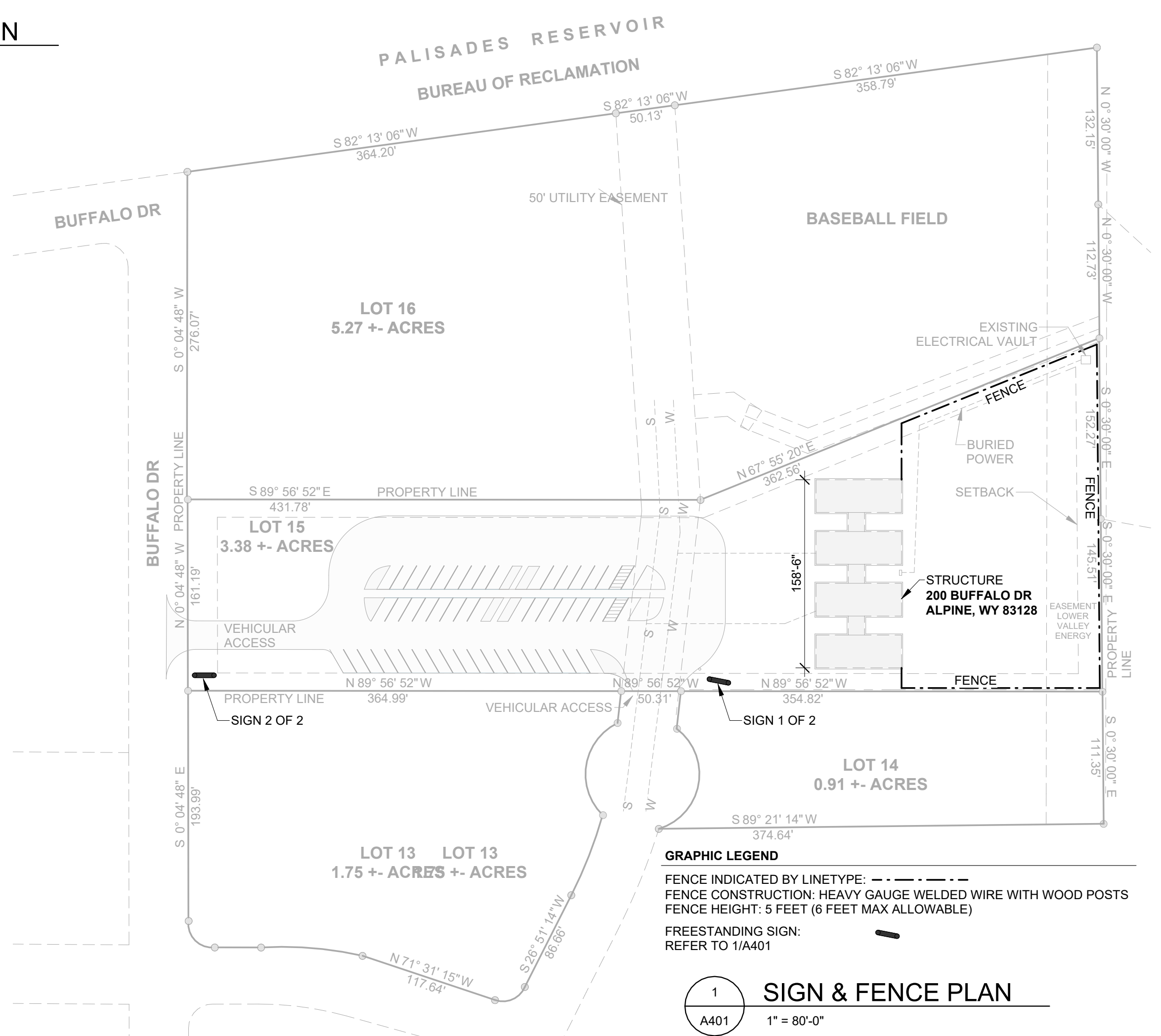


SIDE ELEVATION

2
A401
FREE STANDING SIGN
1/2" = 1'-0"

PROPOSED FREESTANDING SIGN / ALPINE EDUCATION FOUNDATION

- ALPINE LUDC NOTES:**
- 4-803 (g) SIGN STANDARDS FOR PUBLIC AND COMMUNITY FACILITIES:
- (g) SIGN STANDARDS FOR PUBLIC AND COMMUNITY FACILITIES
- (1) EACH BUSINESS ESTABLISHMENT MAY CONSTRUCT AND/OR INSTALL TWO (2) SQUARE FEET OF SIGNAGE FOR EVERY LINEAL FOOT OF COMMERCIAL BUILDING FRONTAGE.
 - (2) SIGNAGE MAY INCLUDE ONE (1) OR MORE TYPES OF SIGNS THAT ARE AUTHORIZED FOR THIS ZONING DISTRICT. THE TYPE, NUMBER, AND SIZE OF SIGNS AUTHORIZED IN THIS DISTRICT ARE SUMMARIZED IN TABLE 4-9.
 - (3) ALL SIGN DESIGN, CONSTRUCTION, AND INSTALLATION SHALL ALSO CONFORM TO SIGN STANDARDS OUTLINED IN SECTION 4-803(g).
- TOTAL FREE STANDING SIGN AREA:**
SIGN AREA WIDTH X SIGN AREA HEIGHT = 49 SQUARE FEET
- TOTAL LINEAL BUILDING FRONTAGE:** 158.6 FEET
158.6 X (2) SQUARE FEET OF SIGNAGE = 317 SQUARE FEET
MAXIMUM ALLOWABLE SQUARE FEET: 150 SQUARE FEET (CAP)
- SIGN HEIGHT:** 15 FEET MAXIMUM
- DOWNWARD LIGHTING:** YES (LED 3000K MAX COLOR TEMP)



1
A401
SIGN & FENCE PLAN
1" = 80'-0"